

PALMETTO LAKES INDUSTRIAL PARK #18

5510-5522 NW 163RD ST & 5523-5534 NW 161ST ST, MIAMI GARDENS, FL 33014

PROPERTY SUMMARY

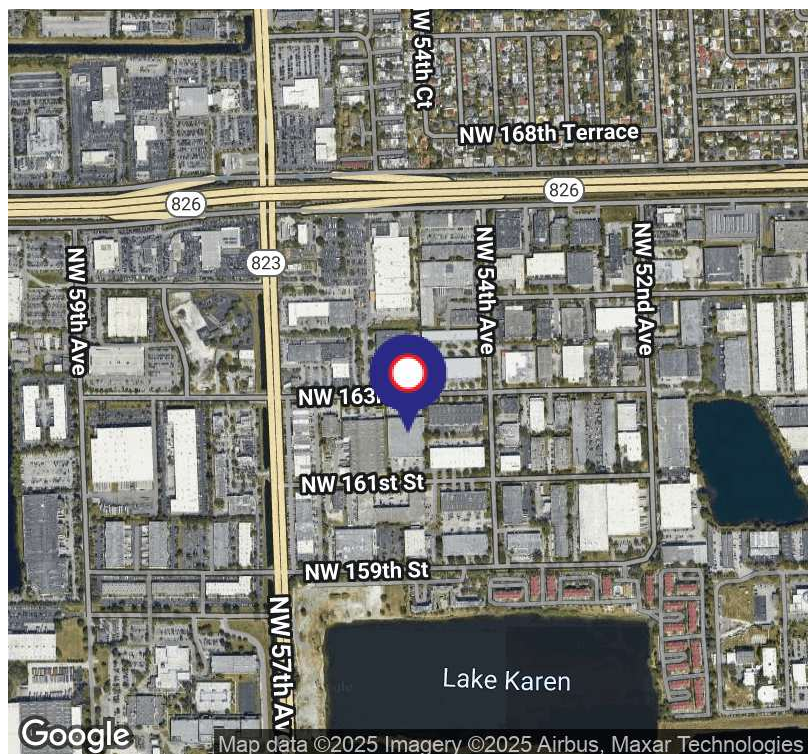


PROPERTY DESCRIPTION

The Palmetto Lakes Industrial Park offers a variety of warehouse options for manufacturers, distributors, cash and carry wholesale businesses, and light industrial business uses. Located in Miami Gardens just blocks from the Home Depot shopping center, this industrial warehouse has a lot of retail in close proximity. This building consists of three bays, one at 10,000 SF, one at 30,000 SF and another at 40,000 SF. The building is less than a mile from the Palmetto Expressway. Great amenities include 3 phase power, 20' -21' clear ceiling heights and 11' x 14' grade level overhead doors and loading docks.

PROPERTY HIGHLIGHTS

- Three bays: 10,000 SF 30,000 SF and 40,000 SF
- 20'-21' clear ceiling heights
- 11' x 14' grade level overhead doors and loading docks
- 3 phase power
- Less than 1/2 mile from the Palmetto Expressway



RUBEN FURMAN

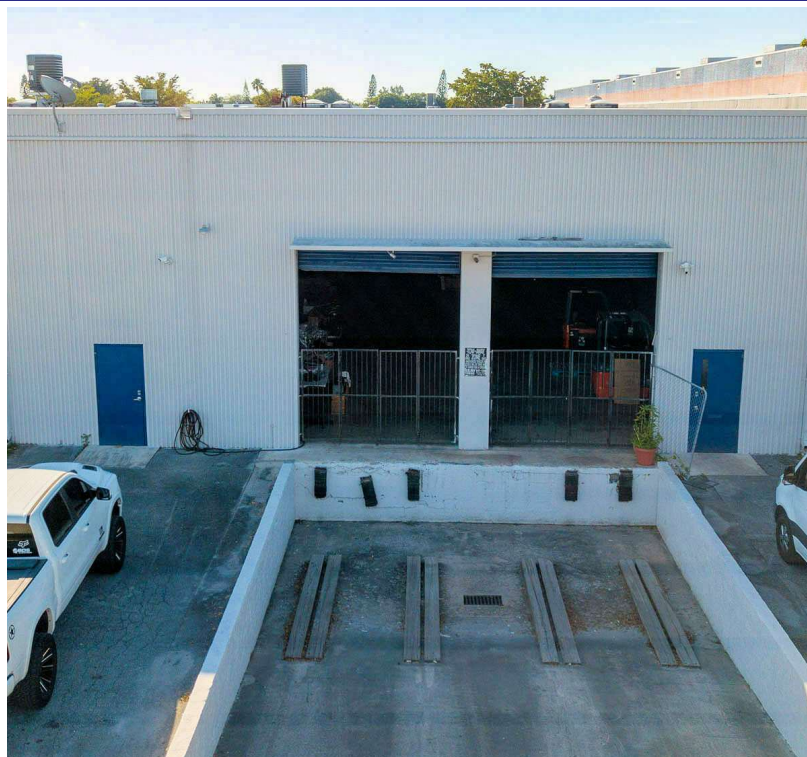
Miami Gardens Manager & Leasing Agent
305.793.8428
ruben@levyrai.com



PALMETTO LAKES INDUSTRIAL PARK #18

5510-5522 NW 163RD ST & 5523-5534 NW 161ST ST, MIAMI GARDENS, FL 33014

ADDITIONAL PHOTOS



RUBEN FURMAN

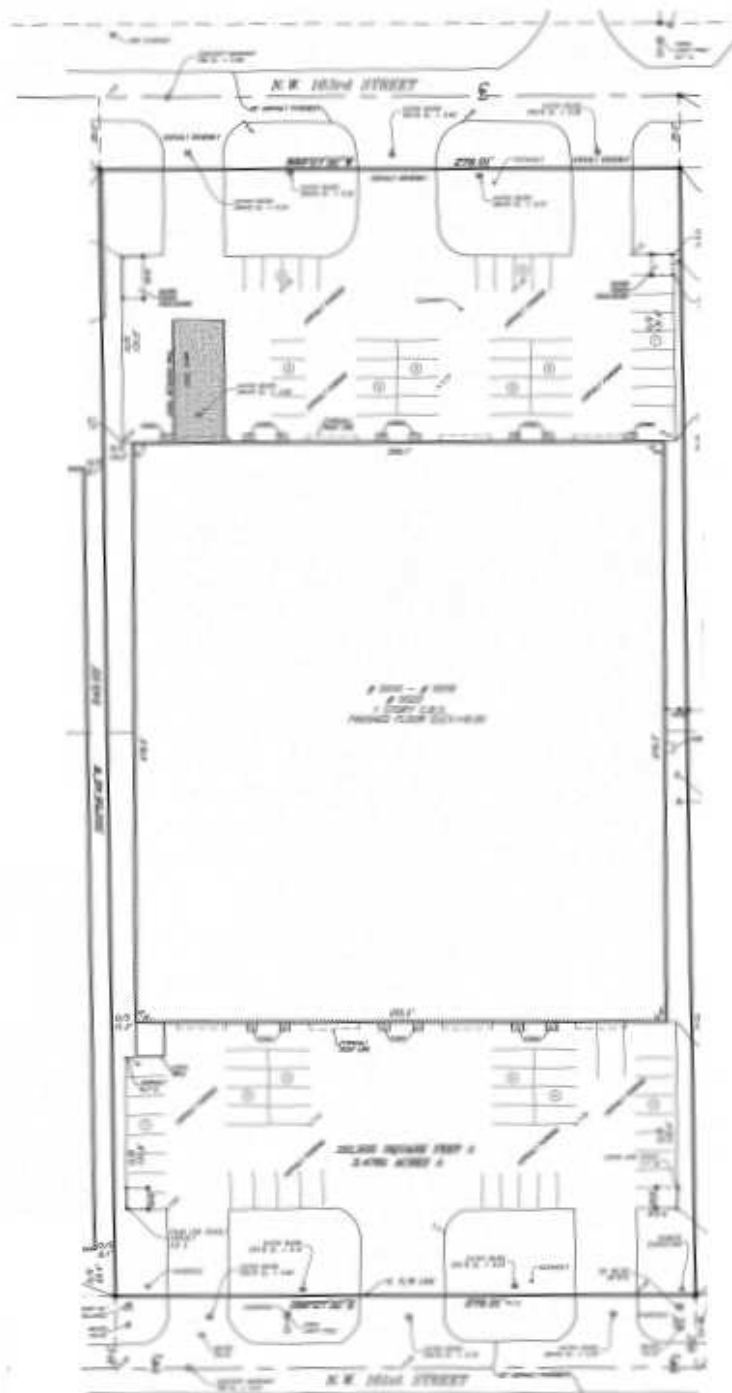
Miami Gardens Manager & Leasing Agent
305.793.8428
ruben@levyrai.com



PALMETTO LAKES INDUSTRIAL PARK #18

5510-5522 NW 163RD ST & 5523-5534 NW 161ST ST, MIAMI GARDENS, FL 33014

SITE PLAN



RUBEN FURMAN

Miami Gardens Manager & Leasing Agent
305.793.8428
ruben@levyrai.com

