

FOR LEASE OR BTS

104 PROPES DRIVE | PIEDMONT, SC 29673



±9,600 SF WAREHOUSE
(Demisable to ±2,400 SF)

NA Earle Furman
101 E. Washington St, Ste 400
Greenville, SC 29601
864.232.9040
www.naearlefurman.com

Grice Hunt, SIOR
864.678.5935
grice@naief.com

Clay Williams, SIOR
864.678.5938
clay@naief.com

Will Coker
864.680.0526
wcoker@naief.com

NO WARRANTY OR REPRESENTATION, EXPRESS OR IMPLIED, IS MADE AS TO THE ACCURACY OF THE INFORMATION CONTAINED HEREIN, AND THE SAME IS SUBMITTED SUBJECT TO ERRORS, OMISSIONS, CHANGE OF PRICE, OR OTHER CONDITIONS, OR WITHDRAWAL WITHOUT NOTICE, AND OF ANY SPECIAL LISTING CONDITIONS IMPOSED BY OUR PRINCIPALS NO WARRANTIES OR REPRESENTATIONS ARE MADE AS TO THE CONDITION OF THE PROPERTY OR ANY HAZARDS CONTAINED THEREIN ARE ANY TO BE IMPLIED.

PROPERTY DETAILS

BLDG SIZE	±9,600 SF (demisable to 2,400 SF)
OFFICE SIZE	To suit
COLUMN SPACING	Clear span
ROLL-UP DOORS	Four (12'x14')
LIGHTING	LED
DELIVERY	As early as Q2 2027
LEASE RATE	Contact broker

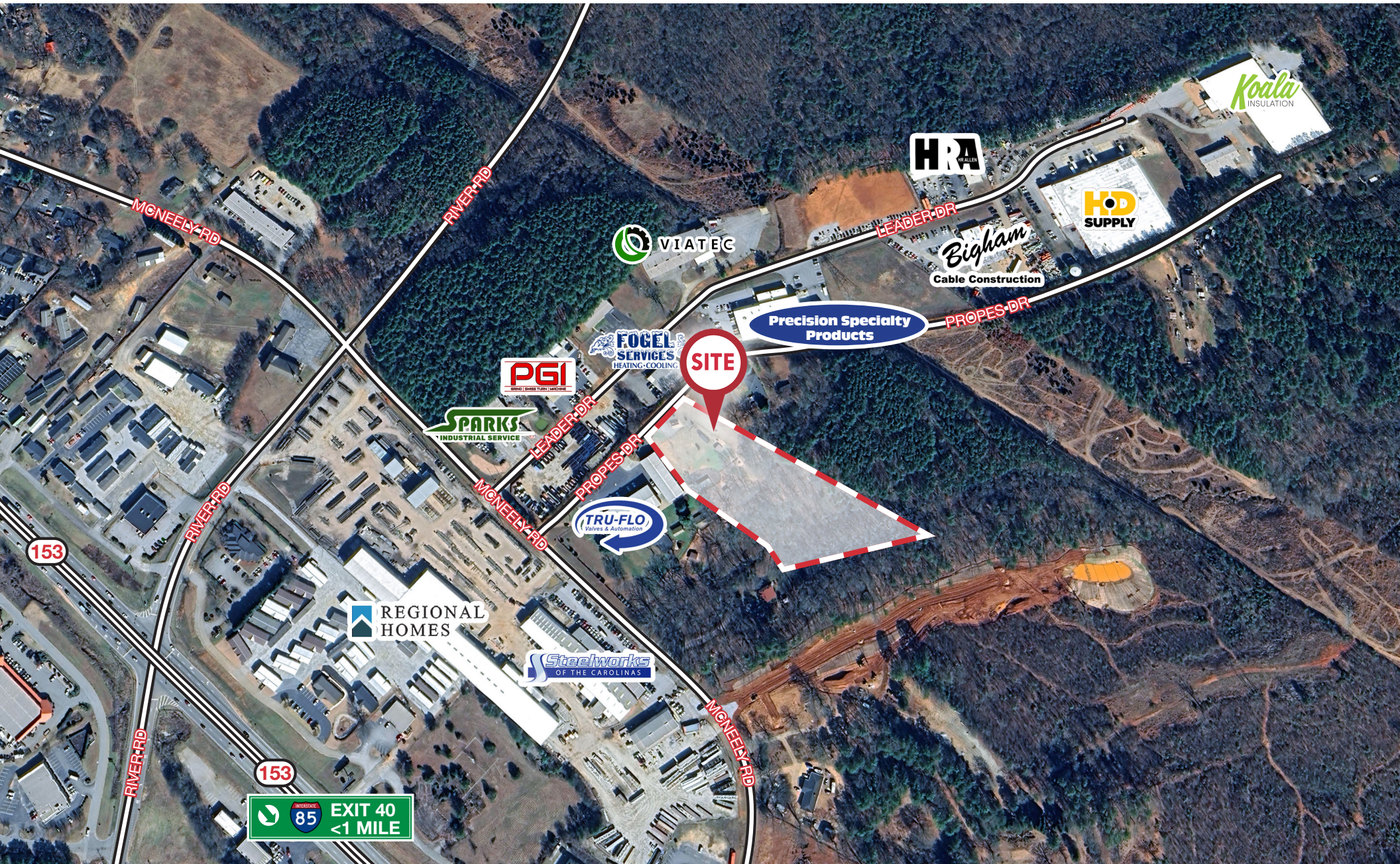
UTILITIES

ELECTRICITY	Duke Energy
GAS	Fort Hills Natural Gas
WATER	Powdersville Water
SEWER	Septic



FOR LEASE OR BTS

104 PROPES DRIVE | PIEDMONT, SC 29673



FOR LEASE OR BTS

104 PROPES DRIVE | PIEDMONT, SC 29673

DISTANCES FROM SITE PROPERTY

I-85	<1 Mile	Greenville, SC	±5 Miles	Spartanburg, SC	±35 Miles
I-385	±11 Miles	GSP International Airport	±18 Miles	Charlotte, NC	±100 Miles
I-26	±30 Miles	SC Inland Port - Greer	±22 Miles	Atlanta, GA	±130 Miles

