

# OFFICE/WAREHOUSE FOR LEASE

## Parham Forest

2812 E. Parham Road | Richmond, Virginia 23228



9,332± SF AVAILABLE

Convenient to Interstates

**GREGG W. BECK**  
Senior Vice President  
+1 804 697 3563  
gregg.beck@thalhimer.com



Thalhimer Center | 11100 W. Broad Street | Glen Allen, VA 23060 | [www.thalhimer.com](http://www.thalhimer.com)

2 Dock Height  
Doors

# PROPERTY HIGHLIGHTS



- Convenient to I-95, I-64 & I-295
- 90% Office finish
- 200 Amp 3-Phase power



## AVAILABILITY

9,332± SF



## IMPROVEMENTS

Will alter for tenant's needs



## ZONING

M-1 Light Industrial



## AVAILABLE

Immediately



## LOADING

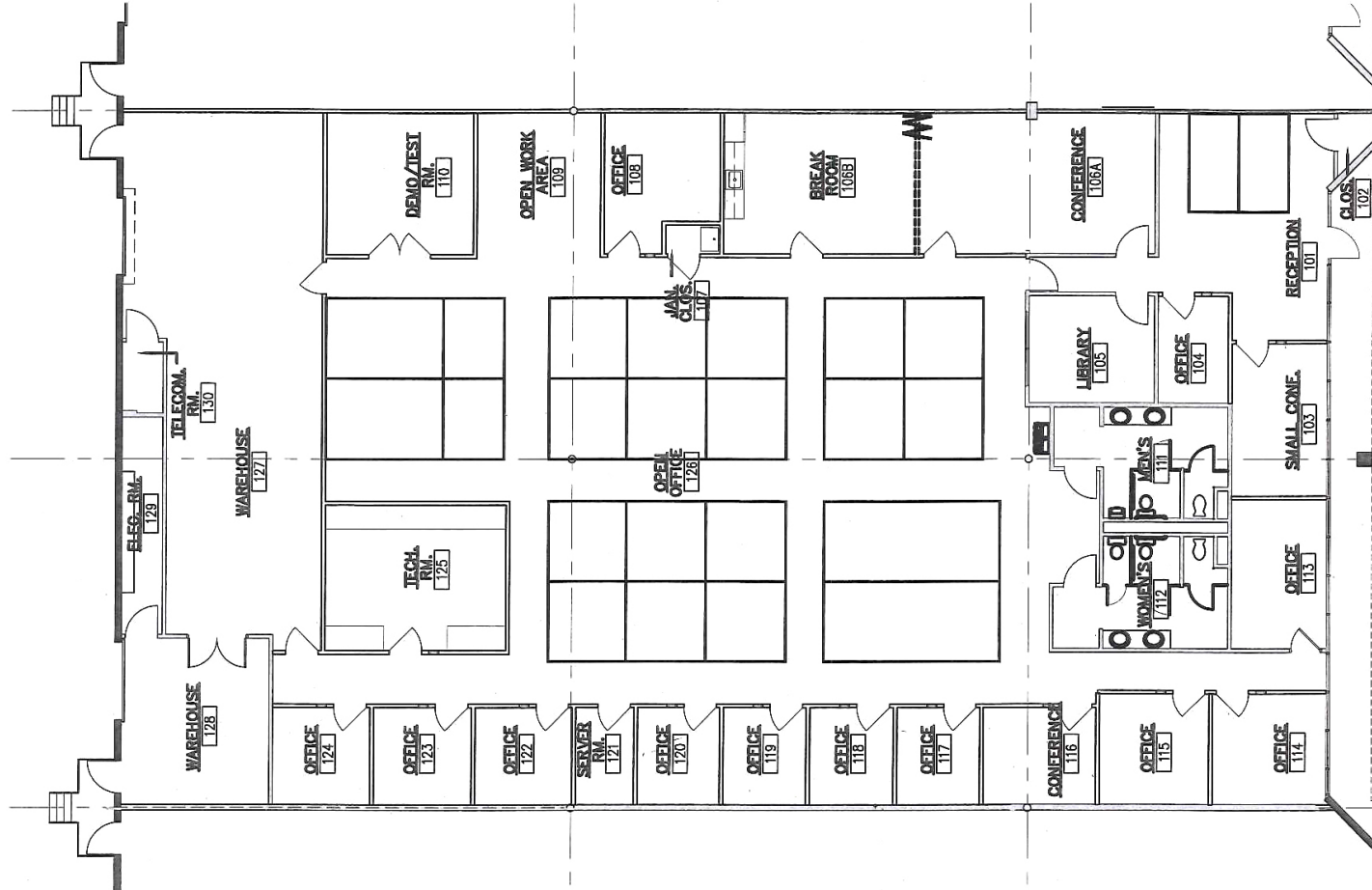
2 Dock height doors



## RENTAL RATE

\$9,350.00/month NNN

# PROPERTY FLOOR PLAN



**GREGG W. BECK**  
Senior Vice President  
+1 804 697 3563  
gregg.beck@thalhimer.com

Thalhimer Center  
11100 W. Broad Street  
Glen Allen, VA 23060  
[www.thalhimer.com](http://www.thalhimer.com)

Independently Owned and Operated / A Member of the Cushman & Wakefield Alliance

Cushman Wakefield | Thalhimer ©2023. No warranty or representation, express or implied, is made to the accuracy or completeness of the information contained herein, and same is submitted subject to errors, omissions, change of price, rental or other conditions, withdrawal without notice, and to any special listing conditions, imposed by the property owner(s). As applicable, we make no representation as to the condition of the property (or properties) in question.