



FOR SALE



SUMMARY

| | |
|-------------|------------------------------------|
| Sale Price: | \$700,000 |
| Lot Size: | 8.9 Acres |
| Zoning: | R1A w/ Future Industrial Zoning |
| Parcel #: | R170-008715-0000-01 |
| 2023 Taxes: | \$3,332 |

PROPERTY HIGHLIGHTS

- Future Industrial land zoning
- 1.8 miles south of I-94 at Rawsonville Road exit
- 10 miles west of DTW
- Between Willis and Bemis Roads
- Lot measures 249' X 1,558'
- Sumpter Township
- Municipal water and sewer
- Class A road

Building relationships.

208 East Washington Street Ann Arbor, MI 48104

734.663.0501

Charlie Koenn

734.926.0230

CKOENN@SWISHERCOMMERCIAL.COM

SWISHERCOMMERCIAL.COM

Industrial Land Development Opportunity for Sale

8715 RAWSONVILLE ROAD, BELLEVILLE, MI 48111



PROPERTY DESCRIPTION

Presenting a prime industrial land opportunity, this expansive 8.9-acre property is located strategically between Willis and Bemis Roads in the industrious Sumpter Township. With a generous lot measurement of 249 feet by 1,558 feet, the parcel offers ample space for a variety of industrial uses.

Situated just 1.8 miles south of the bustling I-94 at the Rawsonville Road exit and 10 miles west of Detroit Metropolitan Airport (DTW), the site provides convenient access to major transportation corridors, enhancing logistical efficiency for businesses. The accessibility ensures that your operations are well-connected to suppliers, customers, and the workforce in the region.



The property is well-equipped with municipal water and sewer services, ensuring that the infrastructural needs of your business are met. This land is an excellent canvas for companies looking to expand or establish their presence in a location with a blend of connectivity, utility services, and space.



Whether you're envisioning a state-of-the-art manufacturing facility, a large-scale distribution center, or a specialized industrial complex, this land is poised to accommodate your ambitions. Take advantage of this opportunity to position your business in a locale that promises growth and accessibility.

Building relationships.

208 East Washington Street Ann Arbor, MI 48104

734.663.0501

Charlie Koenn

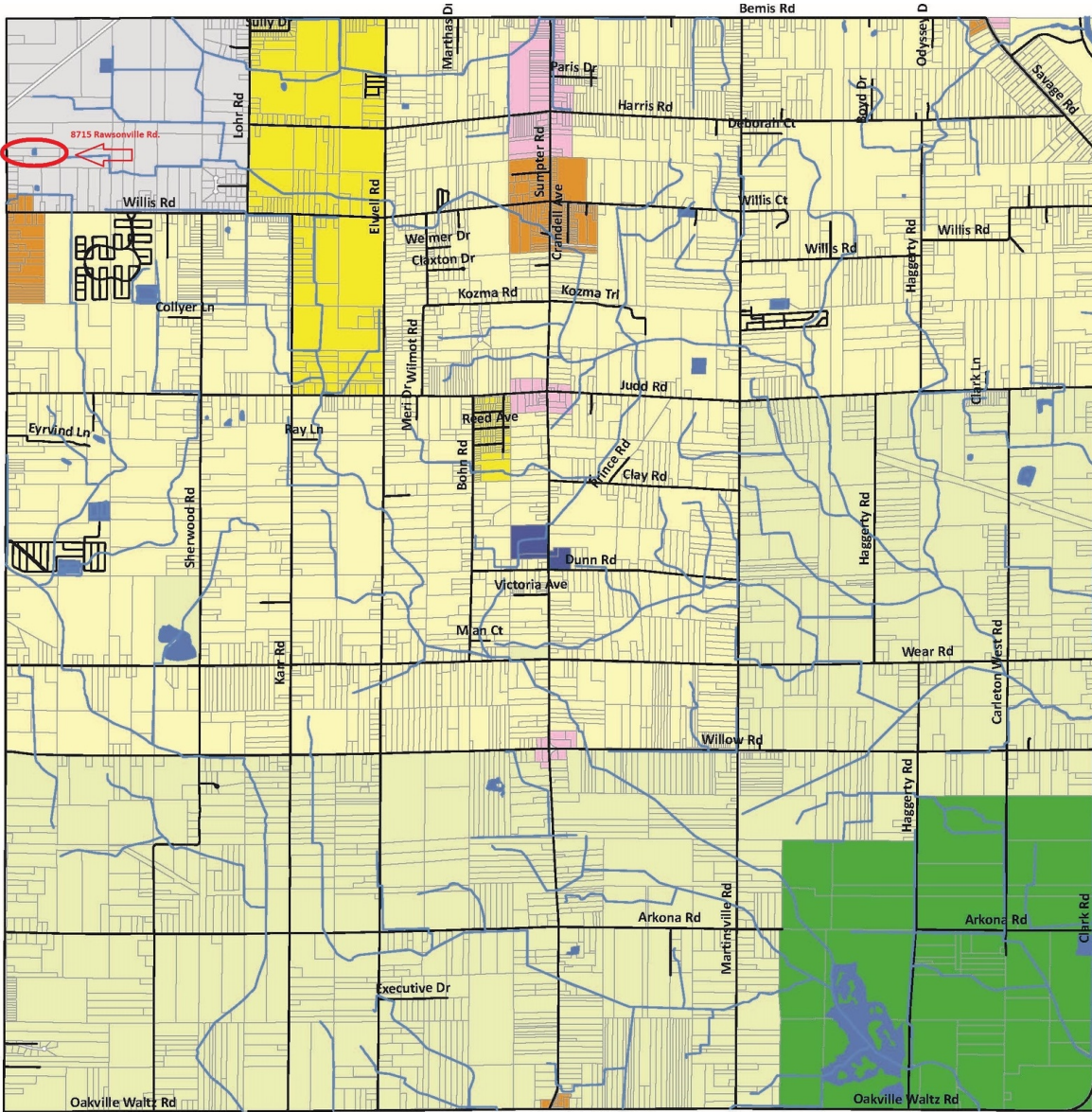
734.926.0230

CKOENN@SWISHERCOMMERCIAL.COM






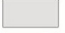


SWISHERCOMMERCIAL.COM

Industrial Land Development Opportunity for Sale

8715 RAWSONVILLE ROAD, BELLEVILLE, MI 48111



LAND USE CATEGORY

- | | |
|--|--|
|  Agricultural |  General Commercial |
|  Rural Residential |  Civic |
|  Suburban Residential |  Industrial |
|  Local Commercial |  Parks and Recreation |

2018 FUTURE LAND USE

Sumpter Township
Wayne County, MI



Carlisle/Wortman Associates
January 2019



Building relationships.

208 East Washington Street Ann Arbor, MI 48104

734.663.0501

Charlie Koenn

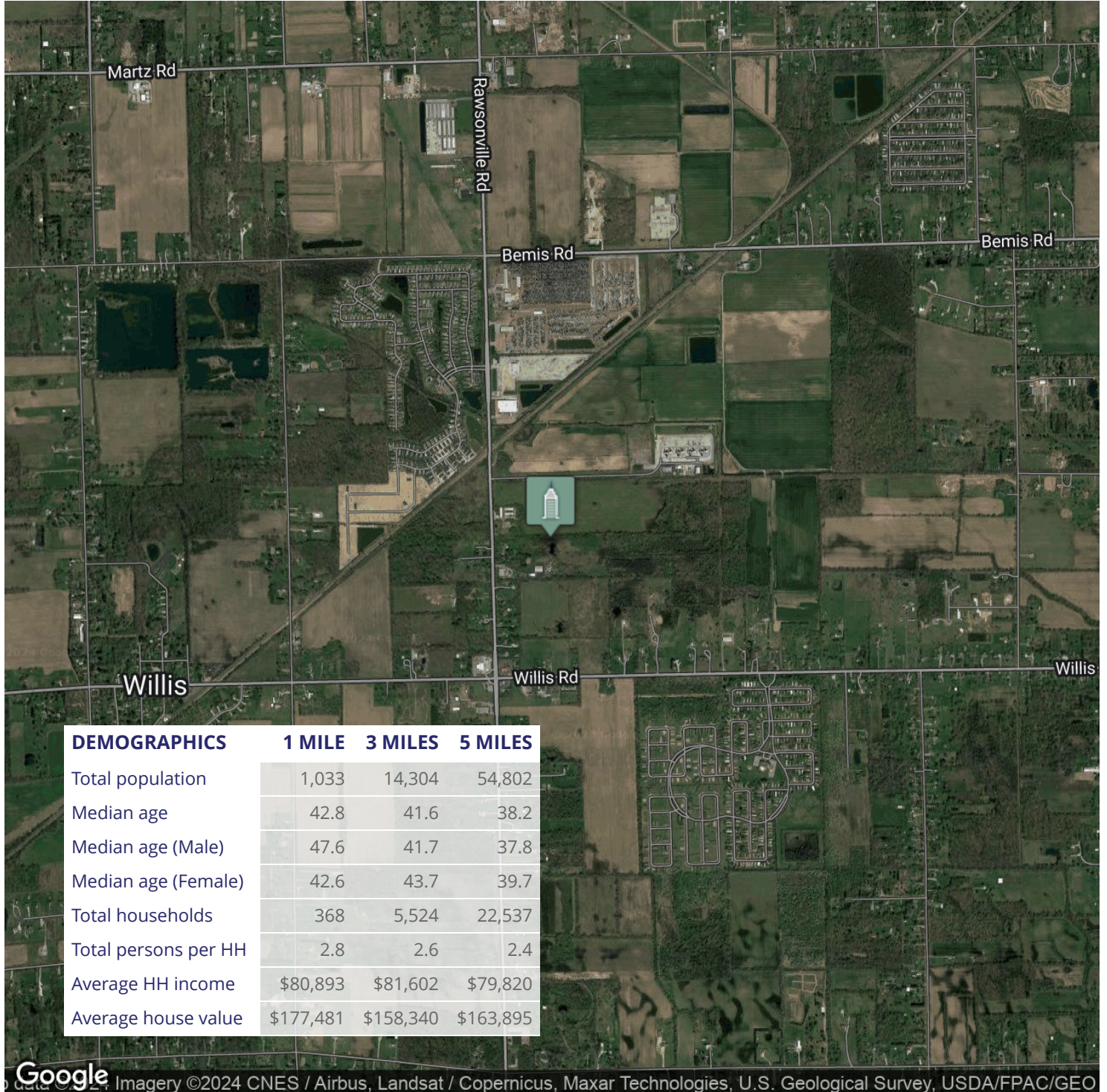
734.926.0230

CKOENN@SWISHERCOMMERCIAL.COM

SWISHERCOMMERCIAL.COM

Industrial Land Development Opportunity for Sale

8715 RAWSONVILLE ROAD, BELLEVILLE, MI 48111



Building relationships.

208 East Washington Street Ann Arbor, MI 48104

734.663.0501

Charlie Koenn

734.926.0230

CKOENN@SWISHERCOMMERCIAL.COM

SWISHERCOMMERCIAL.COM