

INNOVATIVE RESEARCH & DEVELOPMENT OPPORTUNITY

RS/56

56 ROLAND STREET / CHARLESTOWN MA



76,947 SF AVAILABLE FOR LEASE | MODERNIZED R&D CAMPUS



PLUG & PLAY AVAILABILITIES

FLEX, CREATIVE OFFICE SPACE



PLUG & PLAY



**5 MINUTE WALK TO
ORANGE LINE &
GREEN LINE**



**INNOVATIVE OFFICE,
R&D AND LAB
OPPORTUNITIES**

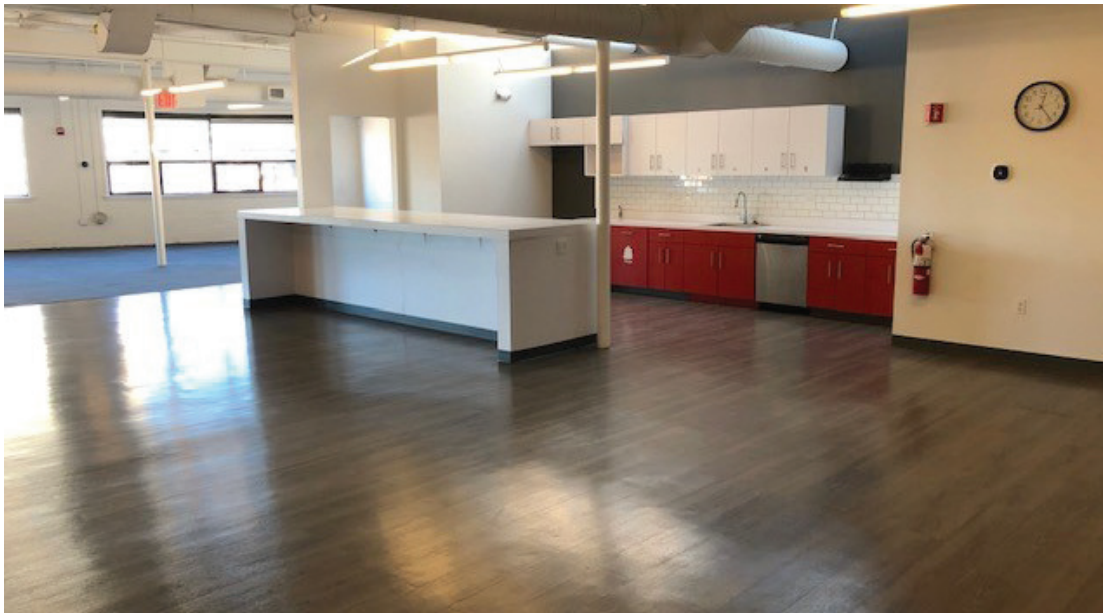


**2000 AMP EXISTING
5000 AMP UPGRADE
COMING JAN. 2024**



**BIKE STORAGE &
REPAIR STATION**





- 145,000 SF multi-tenant office/ R&D / Flex property
- On-site parking
- Fitness center with locker rooms & showers
- Outdoor courtyard
- Common area conference facilities
- Located on Somerville/Charlestown line, one block from I-93 exit 28
- On-site property management and security

CLEAR HEIGHT: 11-18' (slab to deck)

ELEVATORS: 3 Passenger (2,000, 2,500, 4,000 lbs.)
1 Freight (4,000 lbs.)

LOADING: 3 Docks with Levelers, 2 Ramped Loading Doors

UTILITIES:

Water: Boston Water & Sewer

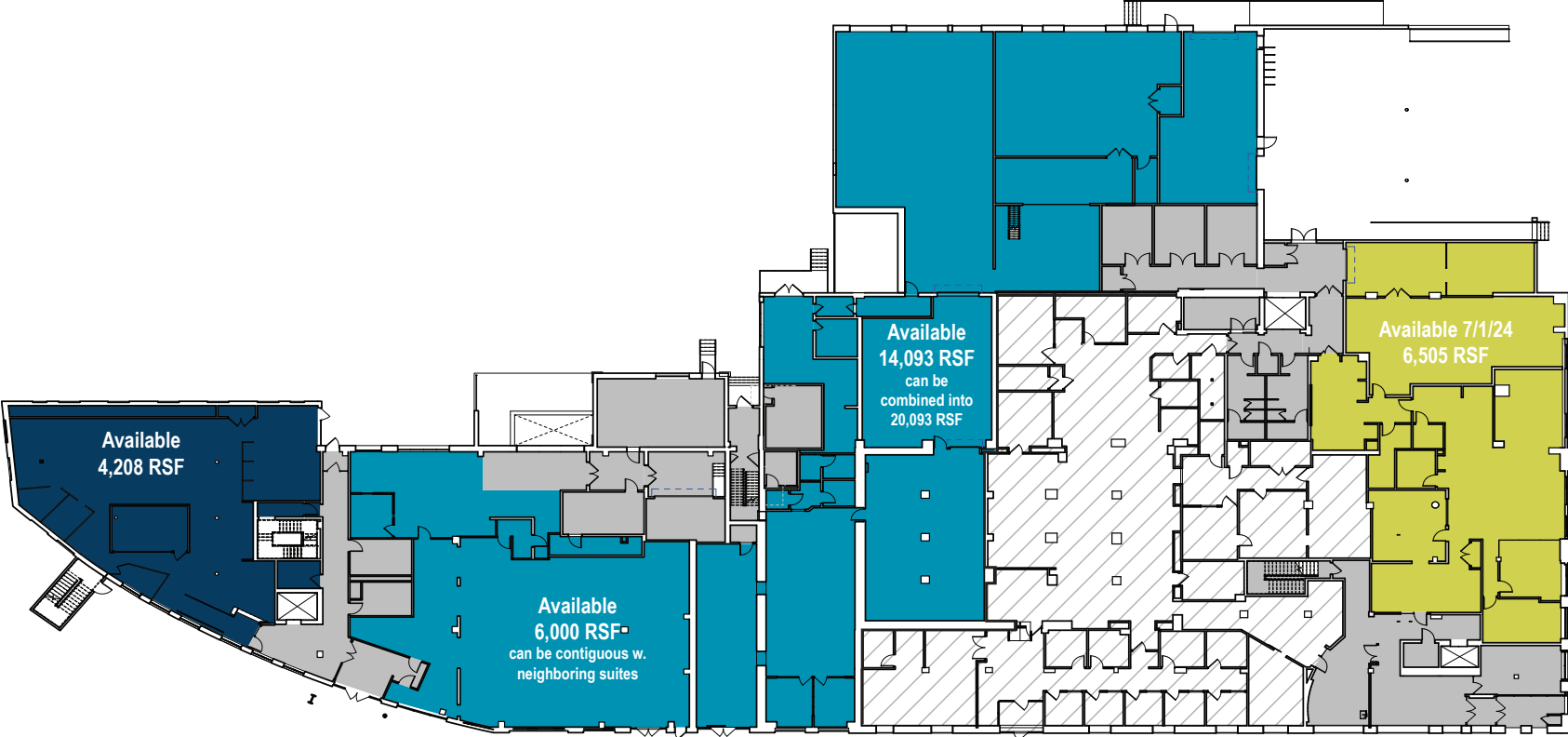
Power: Eversource

Gas: National Grid

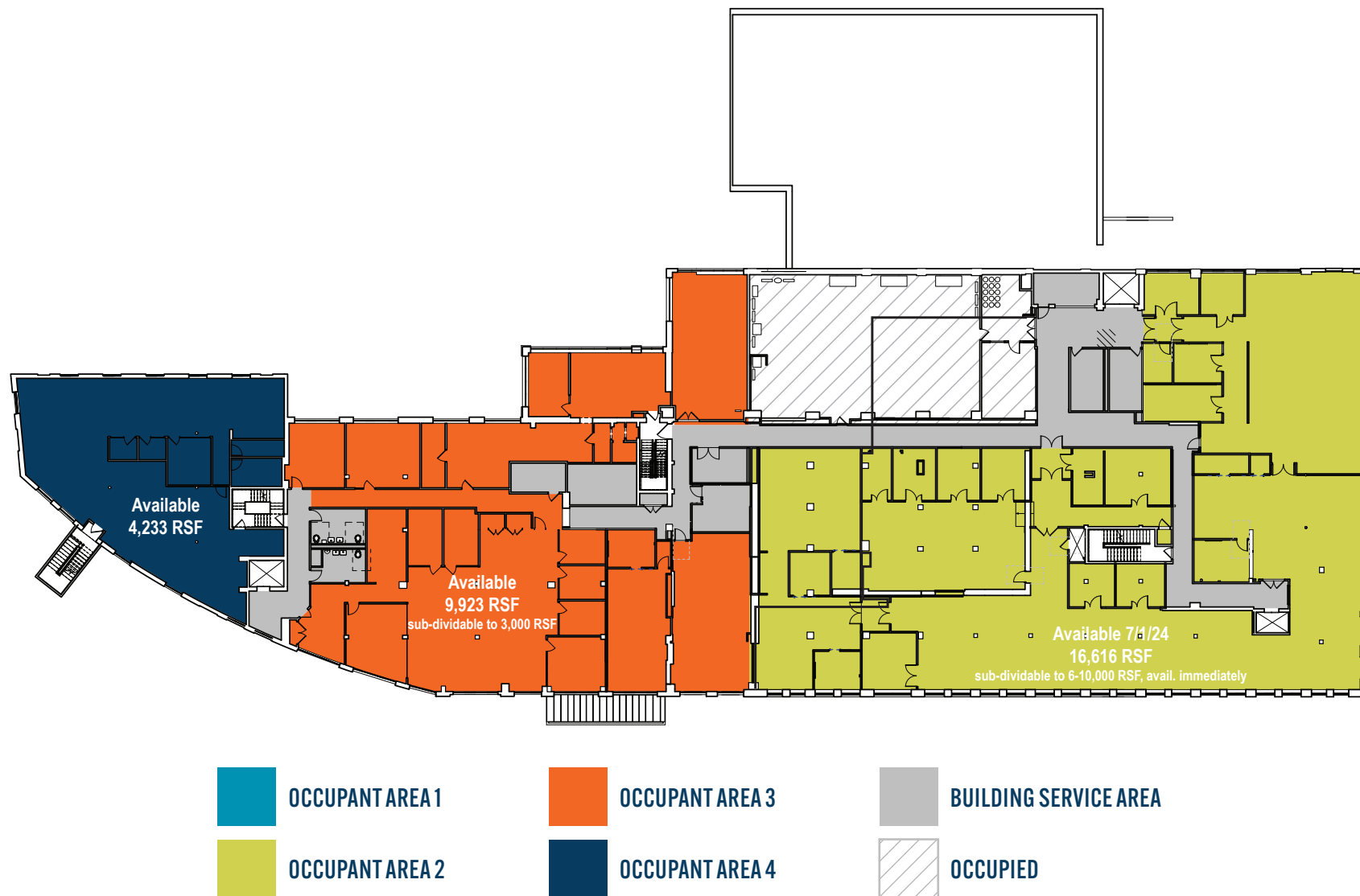
Tel/Data: Verizon, Comcast, WebPass

Fiber: Wicked Bandwidth

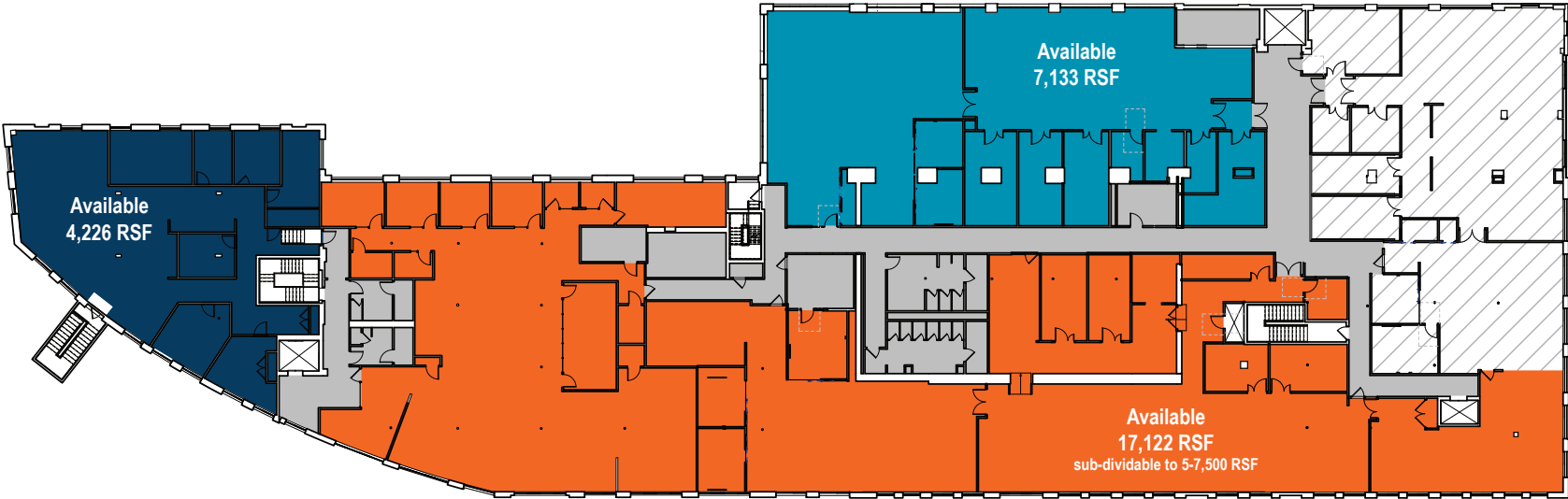
FIRST FLOOR | 4,208 SF - 20,093 FLEX SPACE



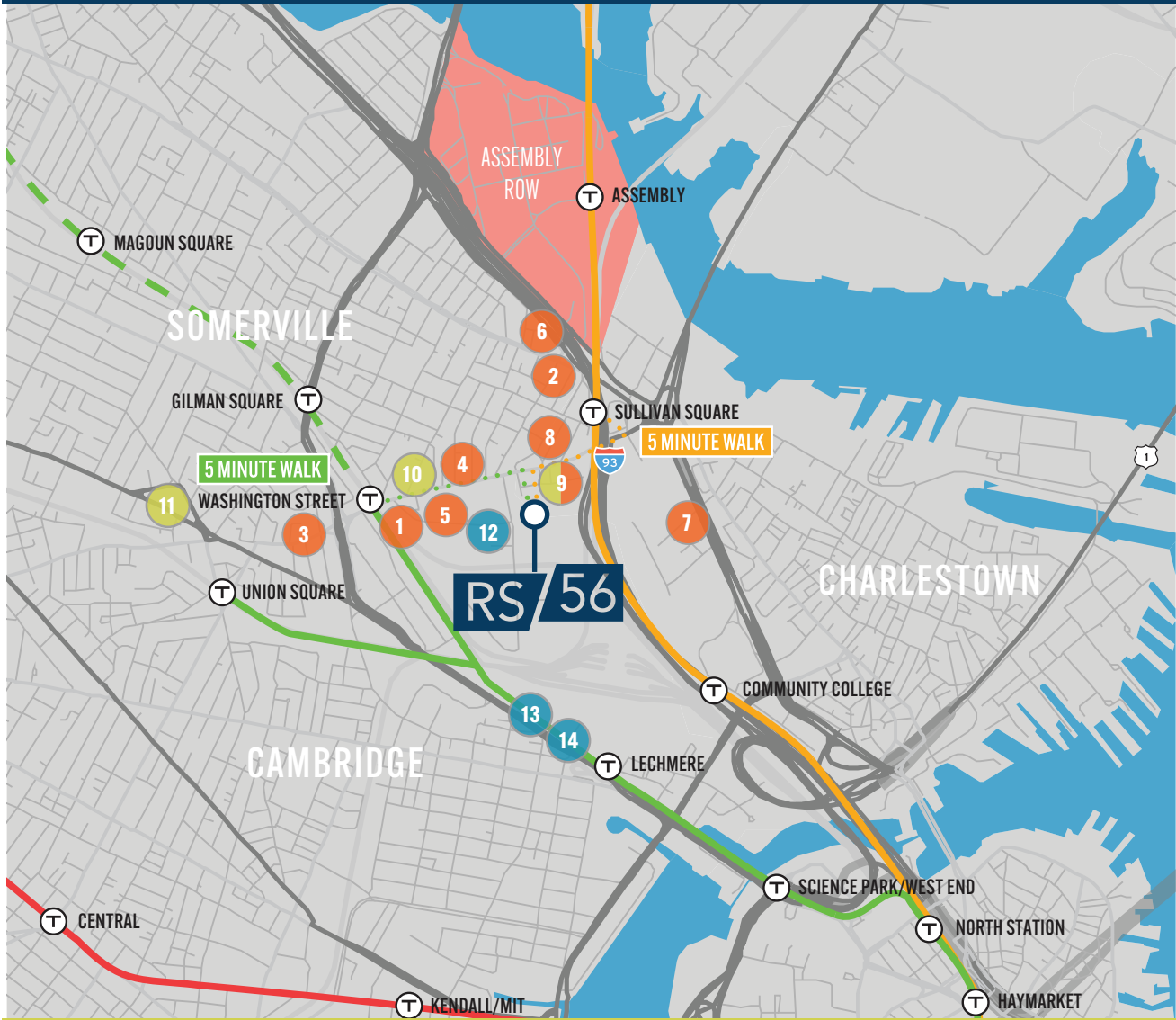
SECOND FLOOR | 3,000 - 9,923 OFFICE SPACE



THIRD FLOOR | 4,226 - 17,122 OFFICE & LAB



LOCATION & AMENITIES



RESTAURANTS

- 1 OLIVEIRAS STEAKHOUSE
- 2 MOUNT VERNON RESTAURANT & PUB
- 3 NU KITCHEN SOMERVILLE
- 4 ROYAL PIZZA & SUBS
- 5 DRAFT
- 6 TACO LOCO MEXICAN GRILL
- 7 TRADESMAN COFFEE SHOP AND PIZZA BAR
- 8 DUNKIN'
- 9 TAVERN AT THE END OF THE WORLD

BARS

- 9 TAVERN AT THE END OF THE WORLD
- 10 MICHAEL'S BAR
- 11 UNION TAVERN

HOTELS

- 12 HOLIDAY INN BOSTON BUNKER HILL AREA
- 13 FAIRFIELD INN & SUITES BY MARRIOTT
- 14 HAMPTON INN BOSTON/CAMBRIDGE

KENDALL/MIT - 2 miles ↓ DOWNTOWN BOSTON - 2.5 miles ↘ LOGAN AIRPORT - 5.5 miles →



56 ROLAND STREET / CHARLESTOWN

SCOTT GREDLER
EXECUTIVE DIRECTOR

+1 617 204 5975

+1 617 997 3171 (cell)

scott.gredler@cushwake.com

DUNCAN GRATTON
EXECUTIVE MANAGING DIRECTOR

+1 617 279 4540

+1 617 590 8901 (cell)

duncan.gratton@cushwake.com

JIM MURPHY
SENIOR ASSOCIATE

+1 617 204 4168

+1 781 264 4442 (cell)

jim.r.murphy@cushwake.com

RYAN HURD
DIRECTOR

+1 617 279-4537

+1 978 835-6088 (cell)

ryan.hurd@cushwake.com

©2022 Cushman & Wakefield. All rights reserved. The information contained in this communication is strictly confidential. This information has been obtained from sources believed to be reliable but has not been verified. NO WARRANTY OR REPRESENTATION, EXPRESS OR IMPLIED, IS MADE AS TO THE CONDITION OF THE PROPERTY (OR PROPERTIES) REFERENCED HEREIN OR AS TO THE ACCURACY OR COMPLETENESS OF THE INFORMATION CONTAINED HEREIN, AND SAME IS SUBMITTED SUBJECT TO ERRORS, OMISSIONS, CHANGE OF PRICE, RENTAL OR OTHER CONDITIONS, WITHDRAWAL WITHOUT NOTICE, AND TO ANY SPECIAL LISTING CONDITIONS IMPOSED BY THE PROPERTY OWNER(S). ANY PROJECTIONS, OPINIONS OR ESTIMATES ARE SUBJECT TO UNCERTAINTY AND DO NOT SIGNIFY CURRENT OR FUTURE PROPERTY PERFORMANCE.

