



## Heritage Place

116 Meridian Way  
Richmond, Kentucky 40475

### Property Highlights

- Attractive three building retail/service center
- Building One: +/-12,000 SF building
- Suite 4: +/-1,500 SF for lease; Includes reception area, 2 large open areas, break area with sink, offices and 2 restrooms
- Great location off Barnes Mill Road across from Richmond Centre within 2 minutes of I-75 Exit 87
- Nearby retailers include Meijer, TJ Maxx, HomeGoods, Dick's Sporting Goods, Ulta, JCPenney, Belk and Cinemark
- Area restaurants include Starbucks, Panera, Olive Garden, First Watch, Logan's Roadhouse, Chick-Fil-A, Culver's, Texas Roadhouse and more
- Locally owned with responsive management
- Traffic count of +/-11,791 VPD on Barnes Mill Road and +/-69,445 VPD on I-75
- Rental Rate: \$2,250 per month (includes NNN expenses, water & sewer)

### Space

Suite 4

### Rate

\$2,250 per month

### Size

1,500 SF

### For More Information

#### Jim Kemper

Vice President

O: 859 422 4407

[jimkemper@naiisaac.com](mailto:jimkemper@naiisaac.com) | KY #189559

#### Paul Ray Smith, Jr

Executive Vice President

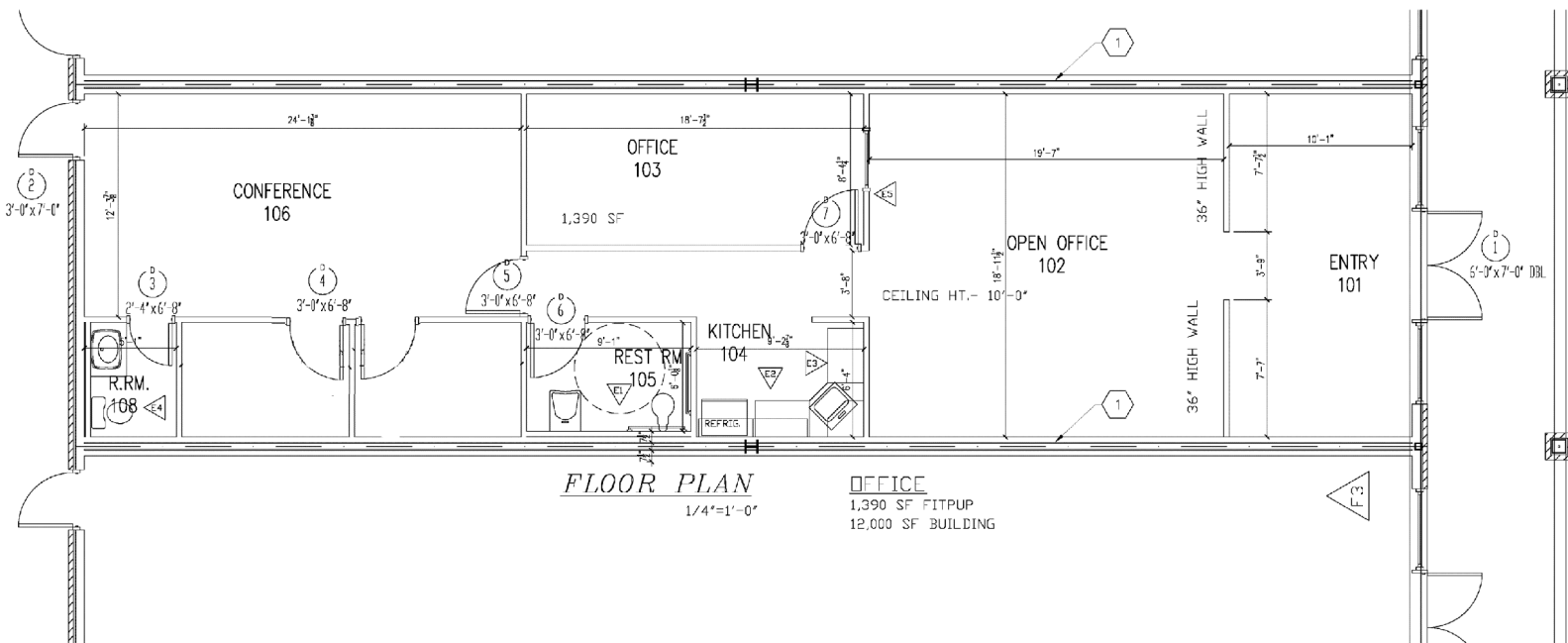
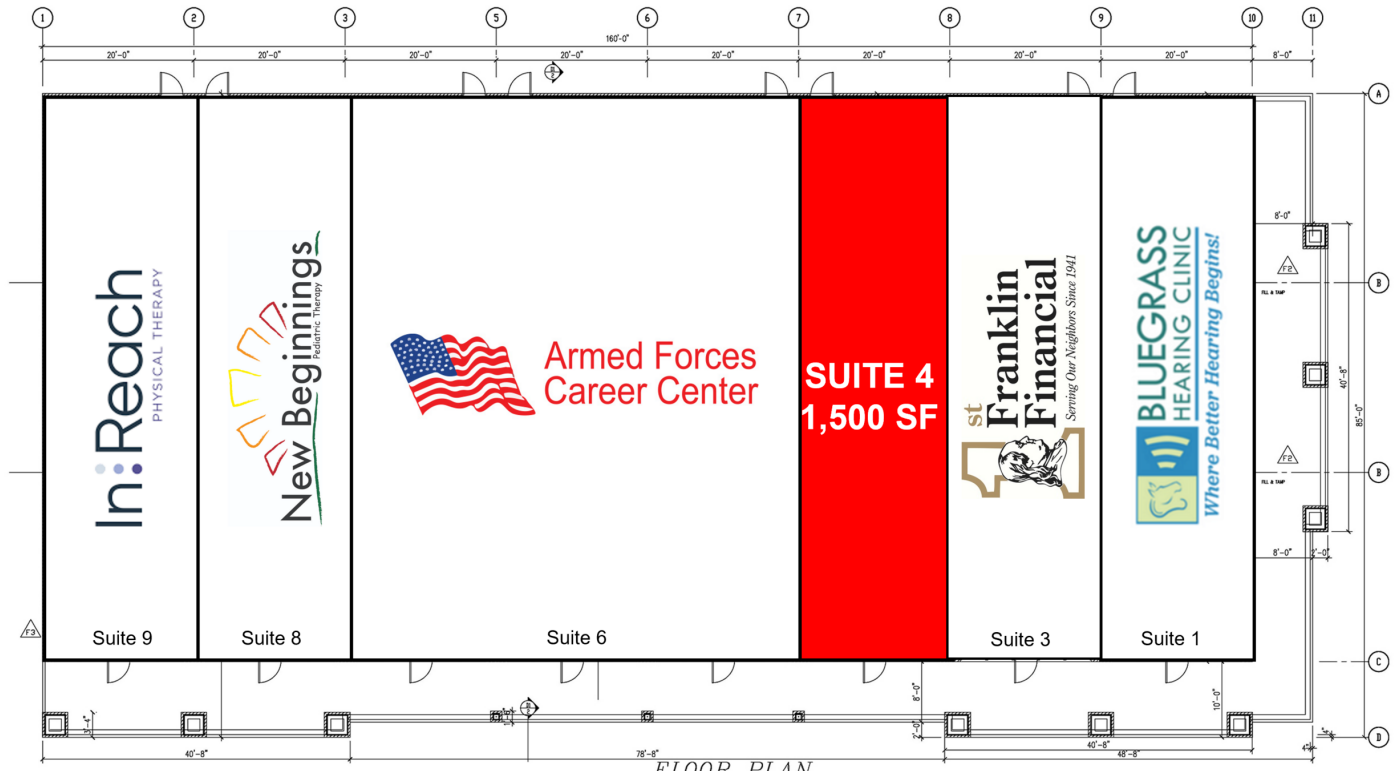
O: 859 422 4401

[prsmith@naiisaac.com](mailto:prsmith@naiisaac.com) | KY #183529

## For Lease

1,500 SF | \$2,250.00 per month

Service/Retail Space



NO WARRANTY OR REPRESENTATION, EXPRESS OR IMPLIED, IS MADE AS TO THE ACCURACY OF THE INFORMATION CONTAINED HEREIN, AND THE SAME IS SUBMITTED SUBJECT TO ERRORS, OMISSIONS, CHANGE OF PRICE, RENTAL OR OTHER CONDITIONS, PRIOR SALE, LEASE OR FINANCING, OR WITHDRAWAL WITHOUT NOTICE, AND OF ANY SPECIAL LISTING CONDITIONS IMPOSED BY OUR PRINCIPALS NO WARRANTIES OR REPRESENTATIONS ARE MADE AS TO THE CONDITION OF THE PROPERTY OR ANY HAZARDS CONTAINED THEREIN ARE ANY TO BE IMPLIED.

771 Corporate Drive, Suite 500  
Lexington, KY 40503  
859 224 2000 tel  
[naiisaac.com](http://naiisaac.com)