

MOYA COMMERCE CENTER

RENO ■ NEVADA

FOR LEASE



The Newest
Industrial Park
in the North Valleys!

PROPERTY OVERVIEW



TWO BUILDINGS ON
±11 ACRES



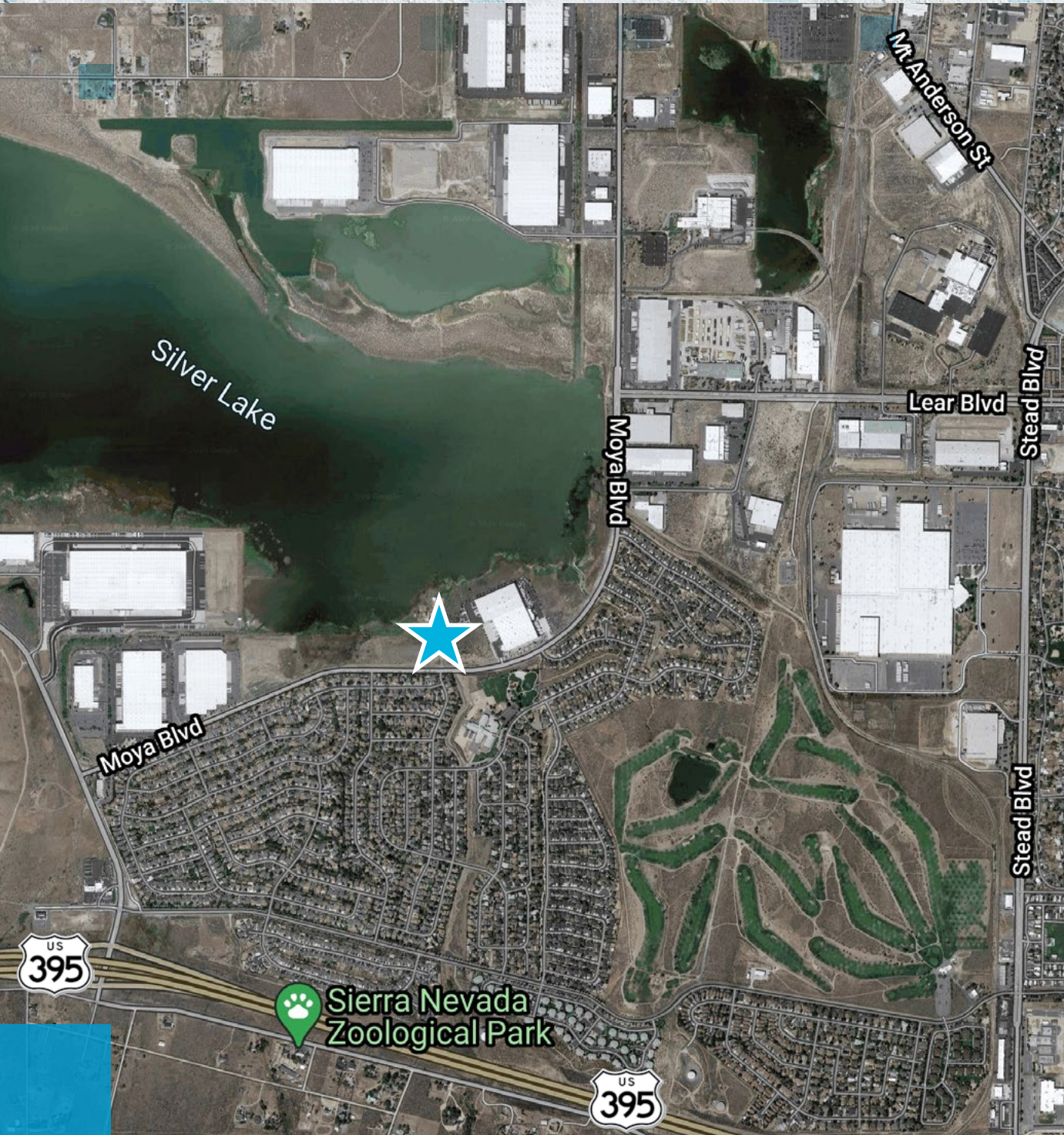
AVAILABLE
±157,140 SQ FT



DIVISIBLE TO
±25,000 SQ FT

CBRE

TRYLINE
DEVELOPMENT



PROPERTY HIGHLIGHTS



TWO BUILDINGS

On ±11 acres with approximately 157,140 square feet available and divisible to 25,000 square feet



EASY OF ACCESS

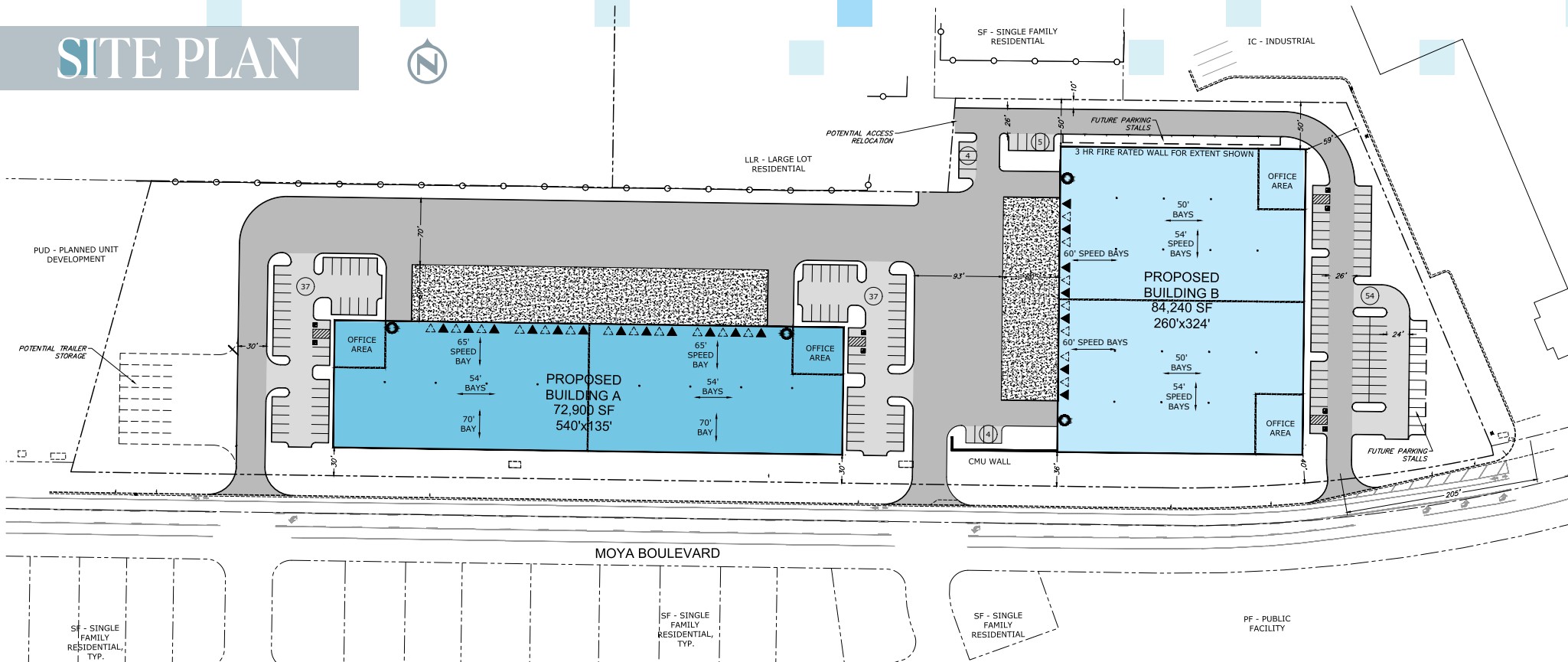
Moya Commerce Center is located 1 mile from U.S. 395 via the Red Rock exit and has multiple access points off of Moya Boulevard



LOCATION

Conveniently located in the well established industrial submarket of North Valleys; this park will have access to an excellent labor pool and nearby amenities

SITE PLAN



PROPERTY FEATURES

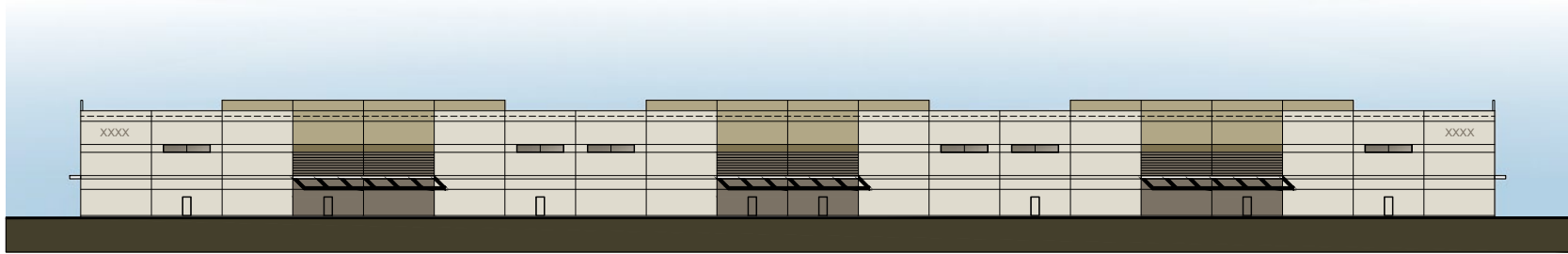
BUILDING A

- ±72,900 SF Available
- 54' x 70' Column spacing
- BTS Office Space/ Location
- 32' Clear height
- 12 Dock doors (expandable to 24)
- ESFR Sprinklers
- 2 Drive-in doors
- 2000 Amps
- 130' Truck court

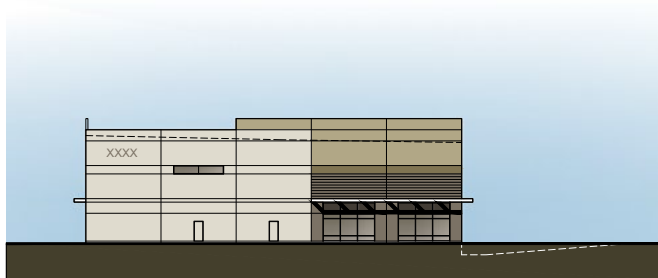
BUILDING B

- Food/Pharm Grade building possibilities
- 2 Drive-in doors
- ±84,240 SF Available
- 54' x 50' Column spacing
- BTS Office Space/ Location
- 32' Clear height
- 7 Dock doors (expandable to 14)
- ESFR Sprinklers
- 3000 Amps
- 130' Truck court

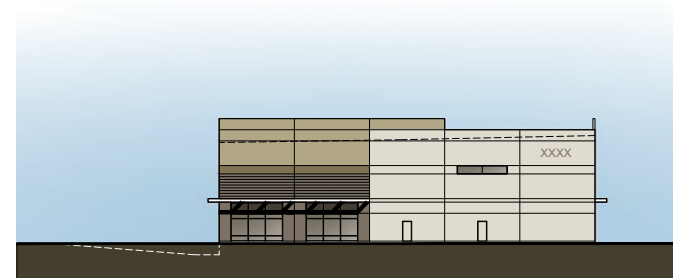
ELEVATIONS



South Elevation (Moya Blvd)



East Elevation



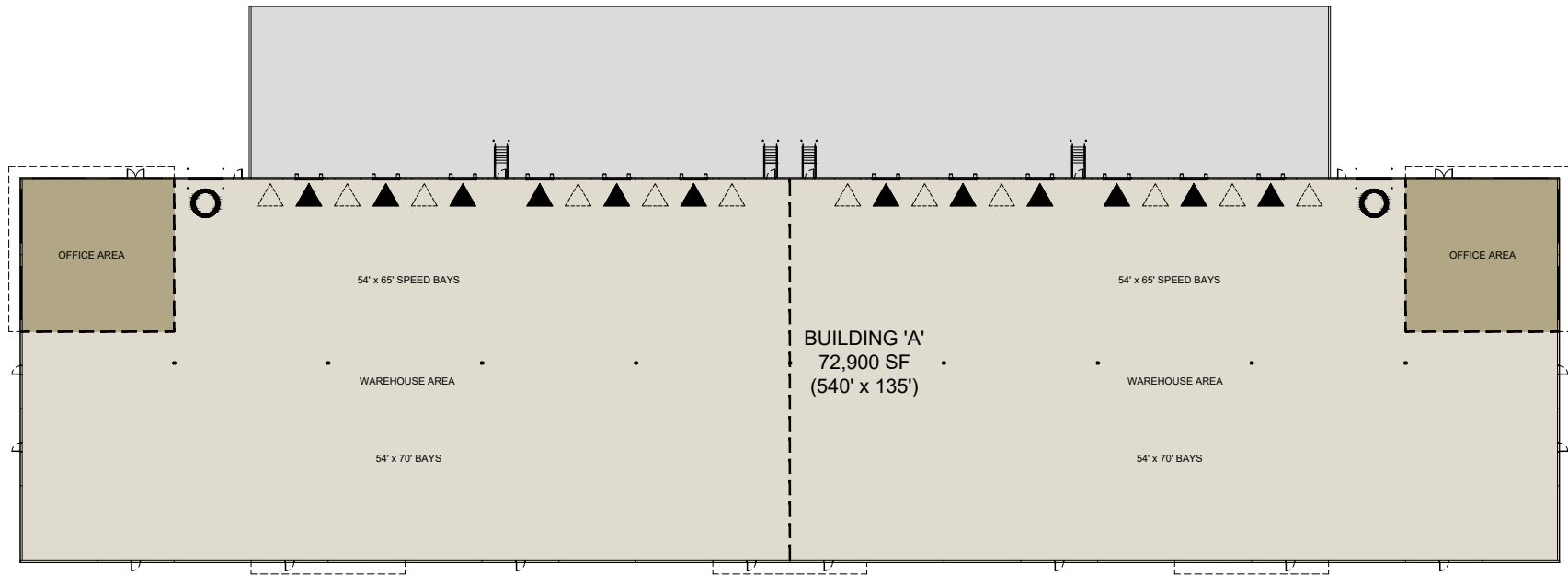
West Elevation



North Elevation

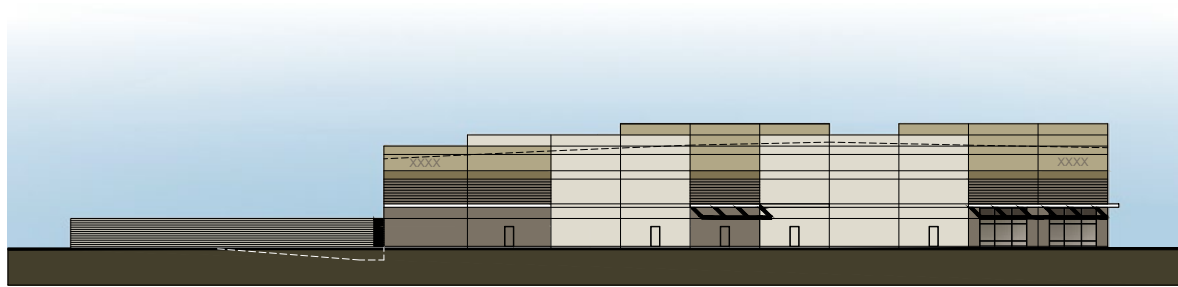
BUILDING A

FLOOR PLAN



BUILDING A ■ ±72,900 SF

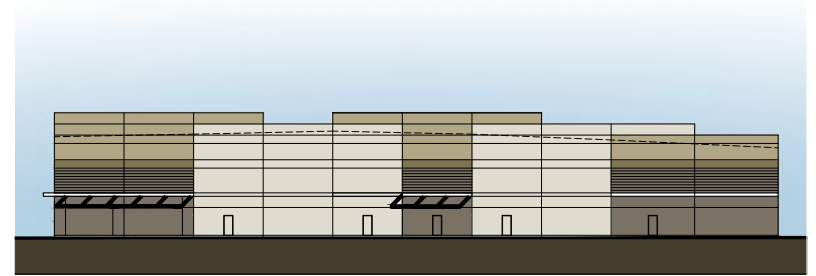
ELEVATIONS



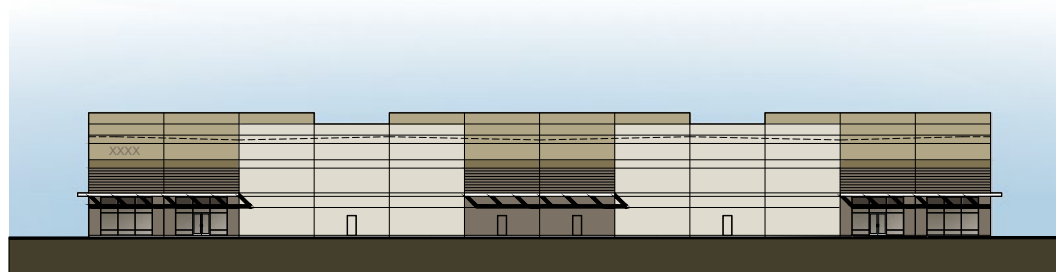
South Elevation (Moya Blvd)



West Elevation



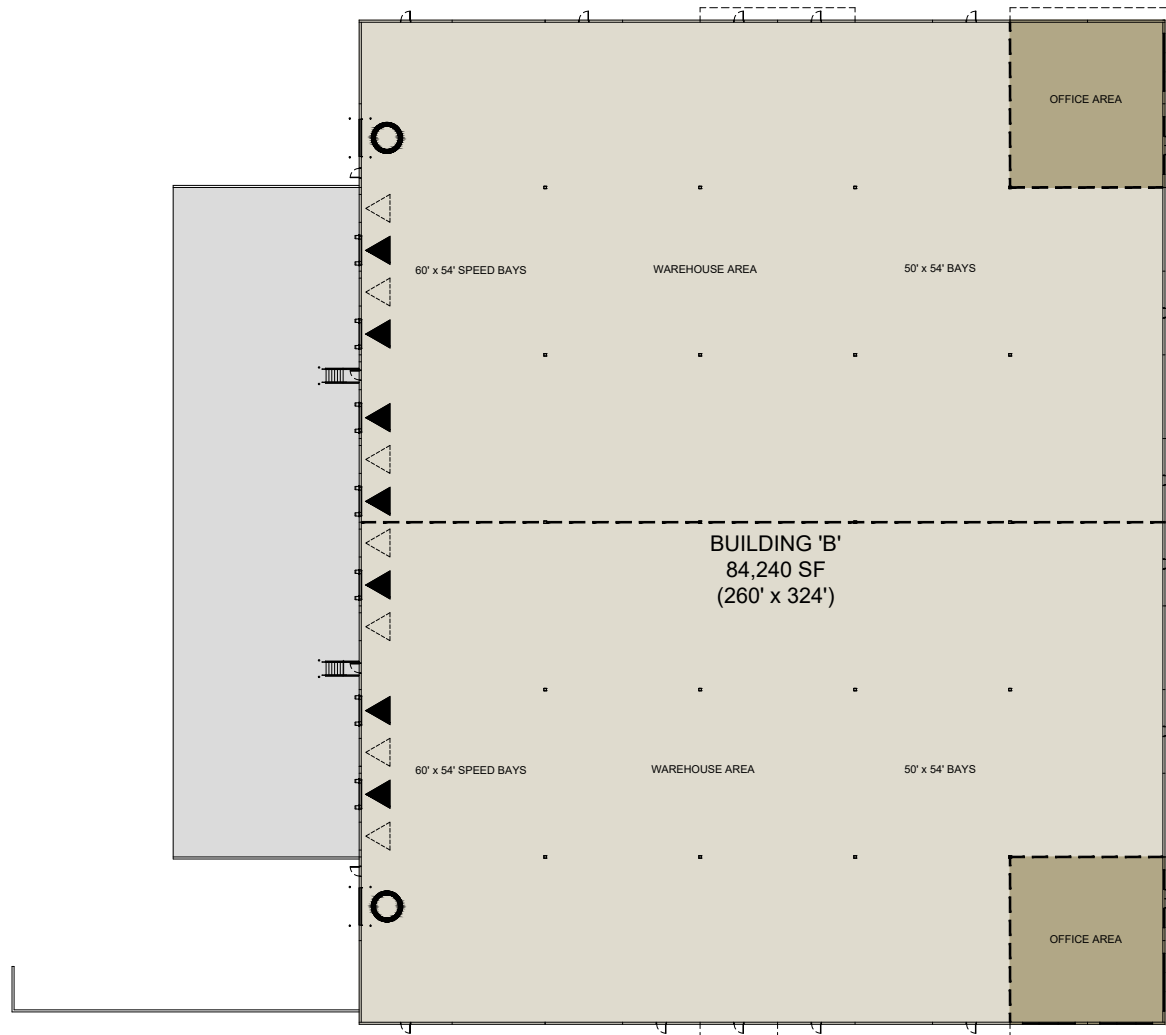
North Elevation



East Elevation

BUILDING B

FLOOR PLAN



BUILDING B ■ ±84,240 SF

AERIAL VIEW

MOYA
COMMERCE CENTER

RENO STEAD AIRPORT

Petco Distribution Center

Urban Outfitters

Metro Medical Supplies

General Motors

Arrow Electronics

Sally Beauty Supply Distribution Center

Fosdick Fulfillment

Hedwin Corporation

JC Penny Distribution Center

UPS Supply Chain

Sherwin Williams Distribution Center

TAGG Logistics

Volvo

N Virginia St

North Valley Commerce Center

Mary's Gone Crackers
Trademark Global
Exxel Outdoors
Supplyhouse

US
395

Newell Brands

Fosdick Fulfillment

Lemmon Dr

Smart Warehousing

Almo Distribution

Lasco Fittings, Inc.

Amazon Fulfillment Center



N Virginia St

MOYA COMMERCE CENTER

RENO ■ NEVADA

FOR MORE INFORMATION, CONTACT:

GREG SHUTT, SIOR

Executive Vice President

+1 775 823 6923

Greg.Shutt@cbre.com

Lic. BS.0046346

CBRE

