



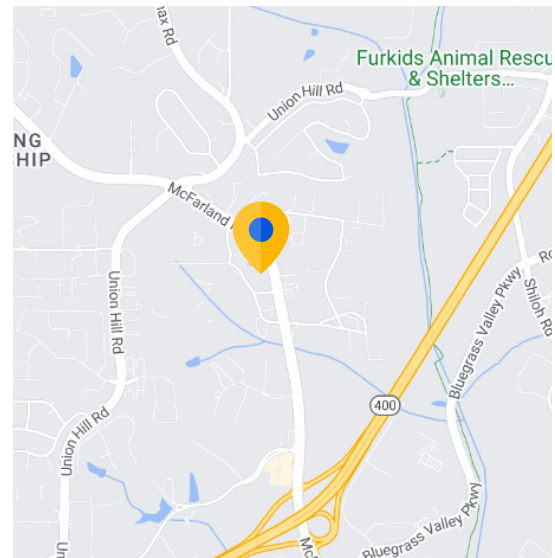
Building Available

850 McFarland Pkwy

Alpharetta, GA 30004

Overview

Building:	850 McFarland Pkwy Alpharetta, GA 30004
Premises:	±16,000 SF
Year Built:	1978
Available:	60 Days
Rental Rate:	Call for Rate
Parking:	Abundant Surface Parking
Dock High:	1
Drive Ins:	3
Clear Height:	16'



Space Specs

- Masonry / Metal Construction
- 1.76 Land Acres
- M-1 Zoning

For more information:



Rhett Delk
678.438.0537 mobile
rdelk@cresa.com



Scott Polinski
404.784.2633 mobile
spolinski@cresa.com

Building Available

cresa

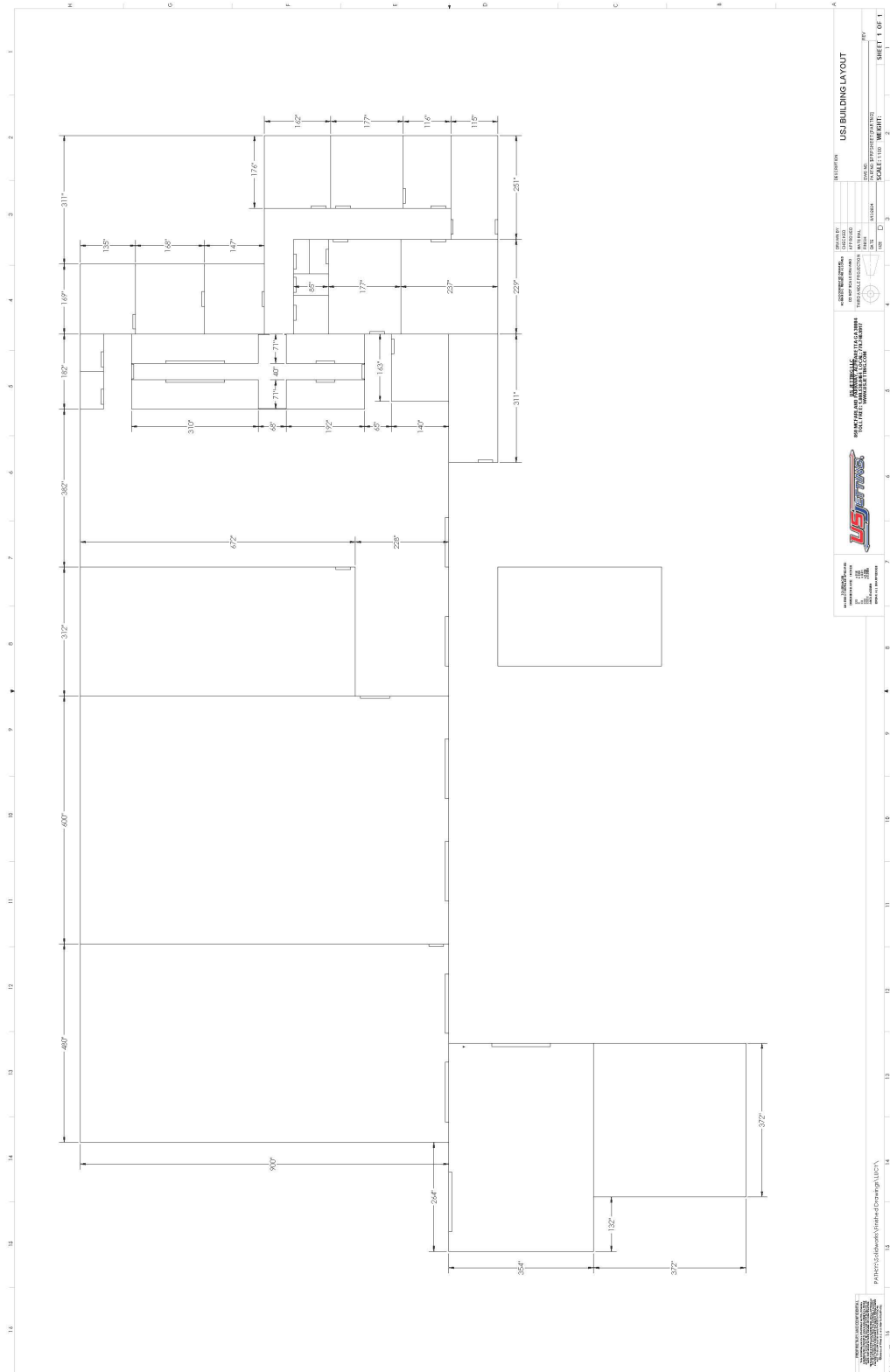
850 McFarland Pkwy

Alpharetta, GA 30004



850 McFarland Pkwy

Alpharetta, GA 30004



USJ BUILDING LAYOUT

MEASURED

DATE: 08/11/2011

PROJECT: USJ BUILDING LAYOUT

SCALE: 1/8" = 1'-0"

SHEET 1 OF 1

850 McFarland Pkwy

Alpharetta, GA 30004



Laborers and Freight, Stock, and Material Movers, Hand

\$18.46/hour

850 McFarland Parkway, Alpharetta, GA 30004

Market Overview

5 Year Population Growth Rate	10.62%
Labor Force	208,861
Total Unemployed	4,760
Unemployment	2.3%
Average Commute Time	34 min
Cost of Living Index	95.9
Average Home Price	\$581,173
Average Monthly Rental - 1 Bedroom	\$2,024

