

Glen Ellyn Crossing

GLEN ELLYN, IL 60137

Ground Lease or Build-To-Suit

LAND



Glen Ellyn Crossing

- ▶ Pad sites available for ground lease or BTS. Hard corner of S. Exmoor Avenue & W. Roosevelt Road is available
- ▶ Building sizes from 2,000-8,000 SF
- ▶ Located in Glen Ellyn's retail corridor, just west of the I-355 interchange
- ▶ High traffic counts on Roosevelt Road (41,900 VPD)
- ▶ Co-tenancy with Starbucks, Chase Bank, Chipotle, Verizon, Jersey Mike's, Huntington Learning Center and more
- ▶ Area tenants include Trader Joe's, ALDI, Staples, Ross Dress for Less, Jewel-Osco, Dollar Tree, Binny's Beverage Depot, Ace Hardware, CVS, Panera Bread, and Oberweis

DEMOGRAPHIC SUMMARY

	1 Mile	3 Miles	5 Miles
Estimated Population	11,543	109,272	259,380
Adj. Daytime Demographics	14,151	124,416	325,208
Estimated Households	4,331	41,911	97,709
Estimated Average Household Income	\$148,083	\$120,761	\$115,728

MARK FREDERICKS

mark@baumrealty.com
312.275.3109

DOUG RENNER

doug.renner@baumrealty.com
312.275.3137



© 2024 All information supplied is from sources deemed reliable and is furnished subject to errors, omissions, modifications, removal of the listing from sale or lease, and to any listing conditions, including the rates and manner of payment of commissions for particular offerings, the terms of which are available to principals or duly licensed brokers. Any square footage dimensions set forth are approximate.

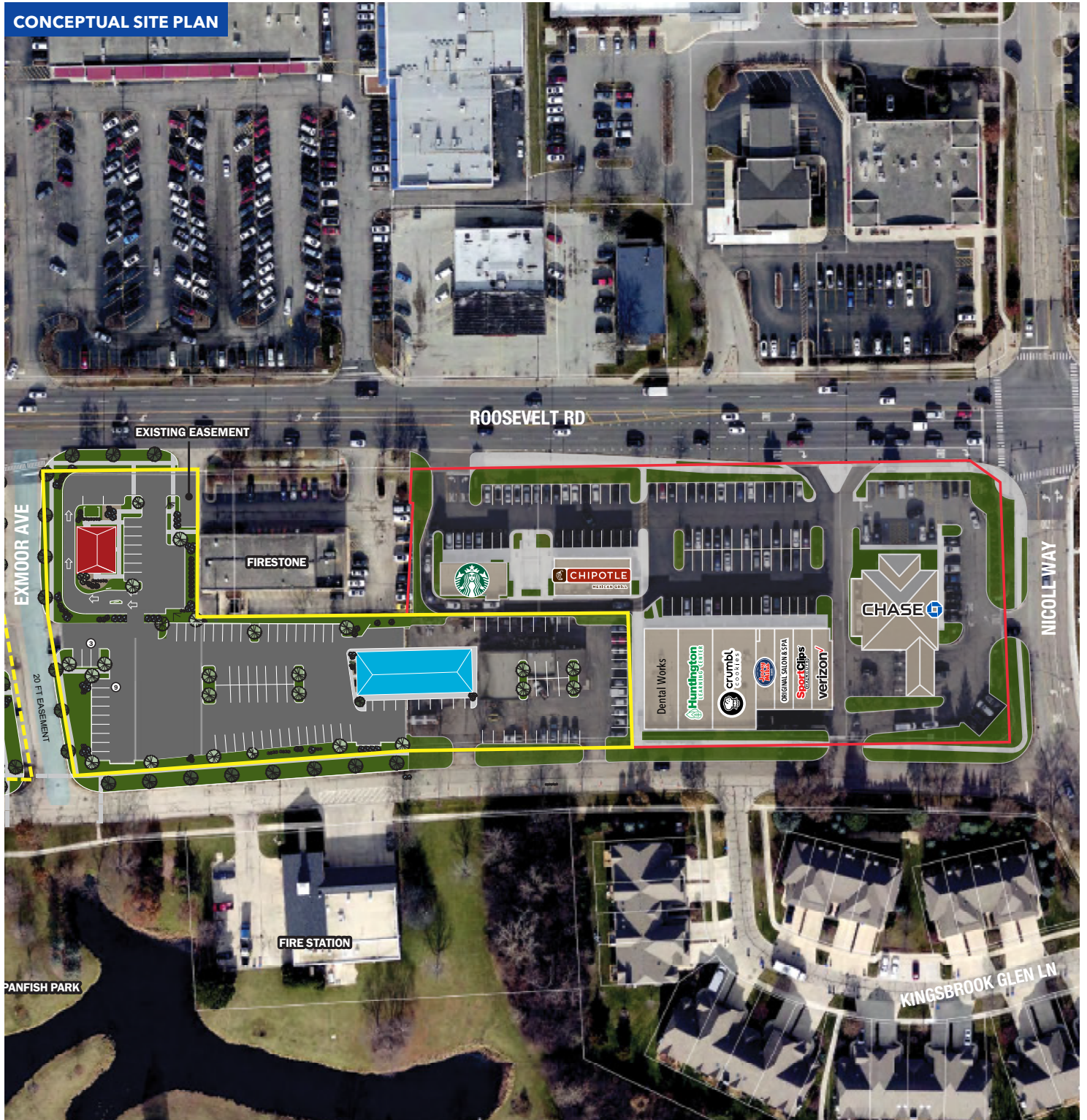
Glen Ellyn Crossing

GLEN ELLYN, IL 60137

Ground Lease or Build-To-Suit

LAND

CONCEPTUAL SITE PLAN



MARK FREDERICKS

mark@baumrealty.com
312.275.3109

DOUG RENNER

doug.renner@baumrealty.com
312.275.3137



© 2024 All information supplied is from sources deemed reliable and is furnished subject to errors, omissions, modifications, removal of the listing from sale or lease, and to any listing conditions, including the rates and manner of payment of commissions for particular offerings, the terms of which are available to principals or duly licensed brokers. Any square footage dimensions set forth are approximate.

