

FOR LEASE—CORPORATE OFFICE SPACE

Stars & Stripes Commerce Park



Property Features:

Opportunity: Completely remodeled 1,355 sf. office space with direct frontage on Hillsborough Ave. for office and retail uses. A+ finishes and new flooring. The suite has two private offices and a large open work area with private restroom. Excellent visibility for businesses wanting major road frontage. Recently remodeled.

Address: 5404 Hoover Bvd, Ste 4 Tampa, FL 33634 (easy access to Veterans Expressway, Hillsborough Ave and Tampa International Airport).

Building Features:

- Completely Remodeled Interior.
- Close proximity to Tampa International Airport.
- Open floor concept with Large Offices and Private Restroom.
- Close to Area Retail and Dining.
- 60,000+/- AADT Traffic Counts.
- Zoned SPI-AP-4 (allows a broad range of Professional Office and Services, Research Activities, Printing Services, Government Offices, Business Services, Contractors Offices and Sales of Used Merchandise and Gunsmith Services. Medical Labs & Offices also allowed).

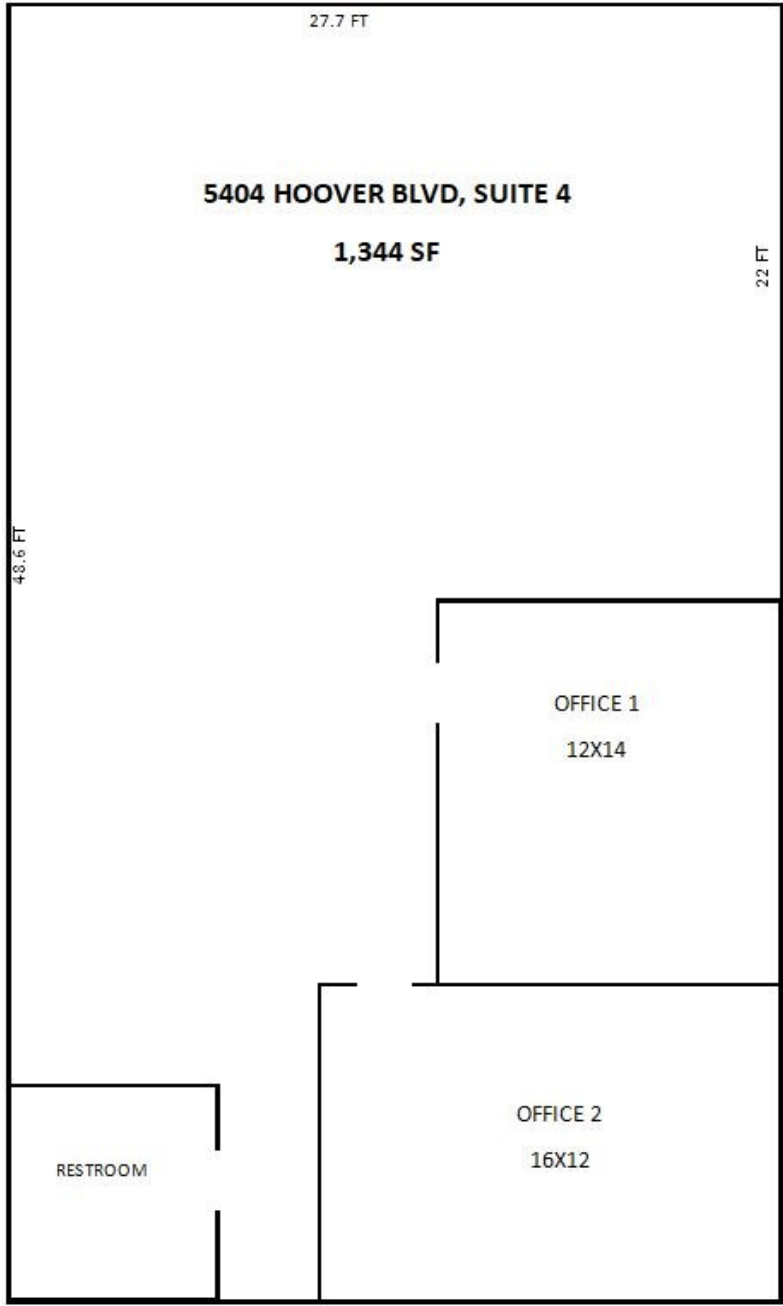


Lease Rate: \$24.00 PSF MG (Modified Gross).

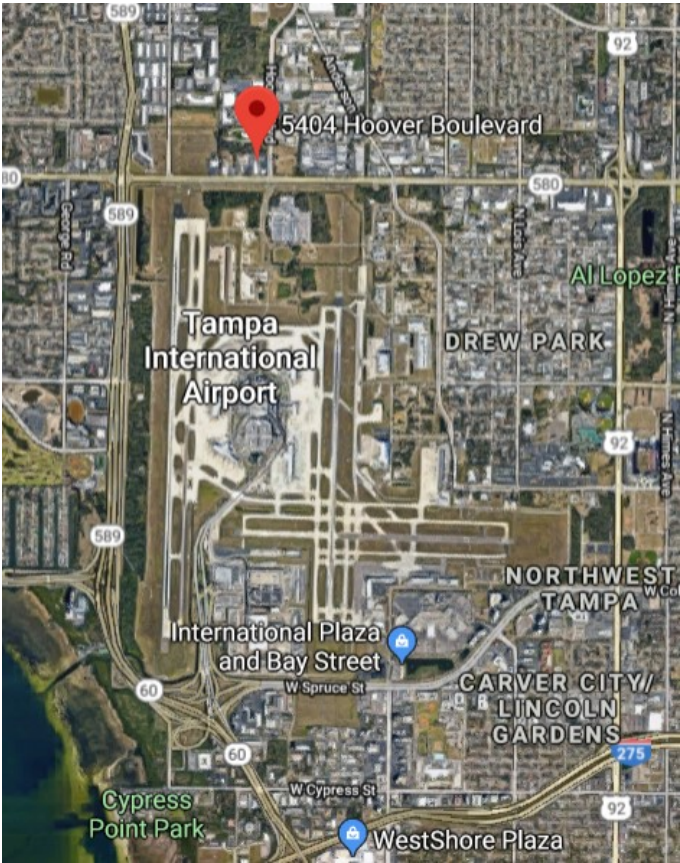
SAGE N. ANDRESS, ALC, CCIM
Tampa Director
PH: 813-416-4254
sage_andress@hotmail.com



5404 HOOVER BLVD, SUITE 4, TAMPA, FL



AERIAL OF PROPERTY NEAR TIA



OPEN FLOOR PLAN



ENTRY AREA



PRIVATE RESTROOM



OFFICE OR CONFERENCE ROOM



PRIVATE OFFICE



BREAK AREA

