

# 5606 Fishhawk Crossing Blvd

Lithia, FL 33547

±4,007 SF Opportunity – Former Bank Branch

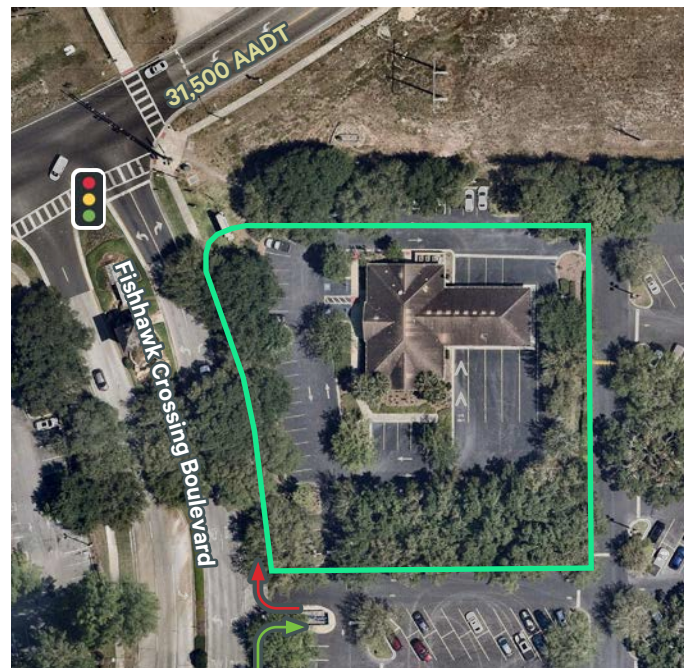


2024 Demographics	1 Mile	3 Miles	5 Miles
Population	5,931	33,972	85,116
Median Age	36.7	39.5	40.4
Households	1,820	10,457	27,859
Average Household Income	\$186,456	\$177,654	\$156,876

ESRI Project ID 1460474

## Property Highlights

- + ±4,007 SF on 1.12 acres with five (5) drive-thru lanes
- + One-story, well maintained bank building built in 2007
- + Freestanding location
- + Publix anchored outparcel
- + Classic profile building with easy access and great visibility on Fishhawk Boulevard (31,500 AADT)
- + 35 parking spaces (8.75/1,000 SF)



Former Bank Branch  
 5606 Fishhawk Crossing Boulevard  
 Lithia, FL 33547

For Sublease



## Contact Us

**Leah Thompson**

Associate

+1 813 481 0177

leah.thompson@cbre.com

© 2024 CBRE, Inc. All rights reserved. This information has been obtained from sources believed reliable, but has not been verified for accuracy or completeness. You should conduct a careful, independent investigation of the property and verify all information. Any reliance on this information is solely at your own risk. CBRE and the CBRE logo are service marks of CBRE, Inc. All other marks displayed on this document are the property of their respective owners, and the use of such logos does not imply any affiliation with or endorsement of CBRE. Photos herein are the property of their respective owners. Use of these images without the express written consent of the owner is prohibited.