

251-73 JERICHO TURNPIKE

BELLEROSE, QUEENS, NY 11426



FOR LEASE

STONEFIELD
REAL ESTATE



Space	Size	Rental Rate	Delivery Condition	Available
2nd Floor	860 SF	\$40.00/PSF Modified Gross	Move-In Ready	Immediately
2nd Floor	900 SF	\$40.00/PSF Modified Gross	Move-In Ready	Immediately
4th Floor	2,580 SF	\$40.00/PSF Modified Gross	Move-In Ready	Immediately
4th Floor	2,960 SF	\$40.00/PSF Modified Gross	Move-In Ready	Immediately
4th Floor	4,940 SF	\$40.00/PSF Modified Gross	Move-In Ready	Immediately

ADAM YAKUBOV
Founder & CEO
929.600.4648
adam@stonefielddrealestate.com

 stonefielddrealestate.com
 [stonefielddrealestate](https://www.instagram.com/stonefielddrealestate)

This information has been secured from sources we believe to be reliable, but we make no representations as to the accuracy of the information. References to square footage are approximate. Buyer/Tenant must verify the information and bears all risk for any inaccuracies.

251-73 JERICHO TURNPIKE

BELLEROSE, QUEENS, NY 11426

FOR LEASE

STONEFIELD
REAL ESTATE



2nd Floor - 860 SF (1)



2nd Floor - 860 SF (2)



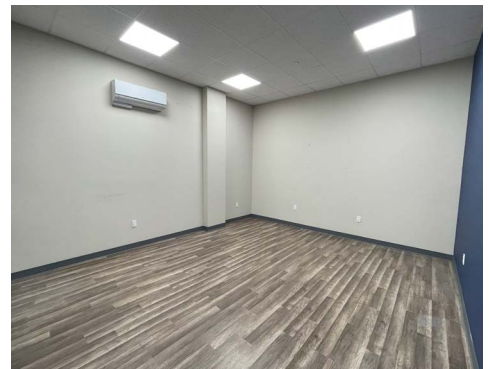
2nd Floor - 860 SF (3)



2nd Floor - 900 SF (1)



2nd Floor - 900 SF (2)



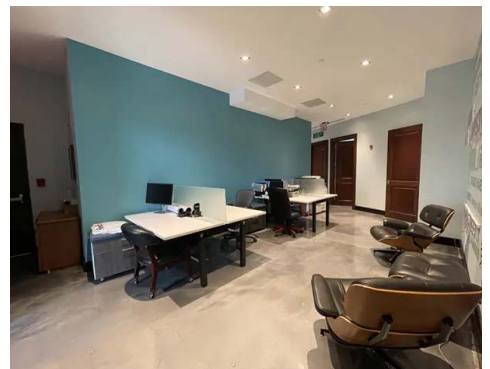
2nd Floor - 900 SF (3)



4th Floor - 2,960 SF (1)





4th Floor - 2,960 SF (2)



4th Floor - 2,960 SF (3)

ADAM YAKUBOV
Founder & CEO
929.600.4648
adam@stonefielddrealestate.com

 stonefielddrealestate.com
 [stonefielddrealestate](https://www.instagram.com/stonefielddrealestate)

This information has been secured from sources we believe to be reliable, but we make no representations as to the accuracy of the information. References to square footage are approximate. Buyer/Tenant must verify the information and bears all risk for any inaccuracies.

251-73 JERICHO TURNPIKE

BELLEROSE, QUEENS, NY 11426

FOR LEASE

STONEFIELD
REAL ESTATE



4th Floor - 2,960 SF (4)



4th Floor - 2,960 SF (5)



4th Floor - 2,960 SF (6)



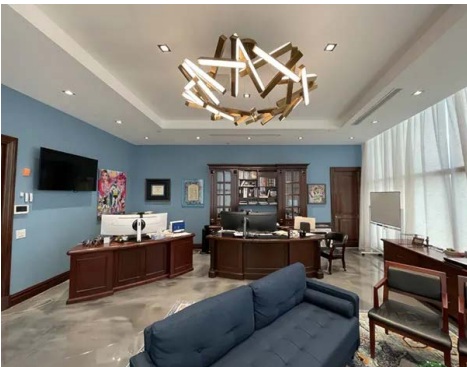
4th Floor - 2,960 SF (7)



4th Floor - 2,960 SF (8)



4th Floor - 2,960 SF (9)



4th Floor - 2,960 SF (10)





4th Floor - 2,960 SF (11)



4th Floor - 2,960 SF (12)

ADAM YAKUBOV
Founder & CEO
929.600.4648
adam@stonefieldrealestate.com

 stonefieldrealestate.com
 [stonefieldrealestate](https://www.instagram.com/stonefieldrealestate)

251-73 JERICHO TURNPIKE

BELLEROSE, QUEENS, NY 11426

FOR LEASE

STONEFIELD
REAL ESTATE



4th Floor - 4,940 SF (1)



4th Floor - 4,940 SF (2)



4th Floor - 4,940 SF (3)



4th Floor - 4,940 SF (4)



4th Floor - 4,940 SF (5)



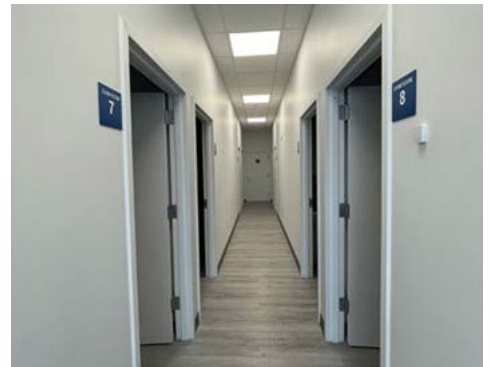
4th Floor - 4,940 SF (6)



4th Floor - 4,940 SF (7)





4th Floor - 4,940 SF (8)



4th Floor - 4,940 SF (9)

ADAM YAKUBOV
Founder & CEO
929.600.4648
adam@stonefielddrealestate.com

 stonefielddrealestate.com
 [stonefielddrealestate](https://www.instagram.com/stonefielddrealestate)

This information has been secured from sources we believe to be reliable, but we make no representations as to the accuracy of the information. References to square footage are approximate. Buyer/Tenant must verify the information and bears all risk for any inaccuracies.