

**FOR LEASE: 2,670 SF GROUND FLOOR RETAIL SPACE
+ 1,160 SF BASEMENT**
1350 N Front St, Philadelphia, PA

EQUITY CRE



PROPERTY FEATURES & DETAILS

- New construction retail space in the heart of Fishtown (15 residential units above)
- 2,670 SF + 1,160 SF basement
- 2 blocks from the “El” Girard Station
- Join the emergence of the Front Street Corridor
- Zoning: CMX-3
- Ceiling Height: 12’9” throughout
- Restaurant venting possible
- Dedicated outdoor seating area
- Steps from popular breweries, distilleries, top restaurants and coffee shops

CONTACT

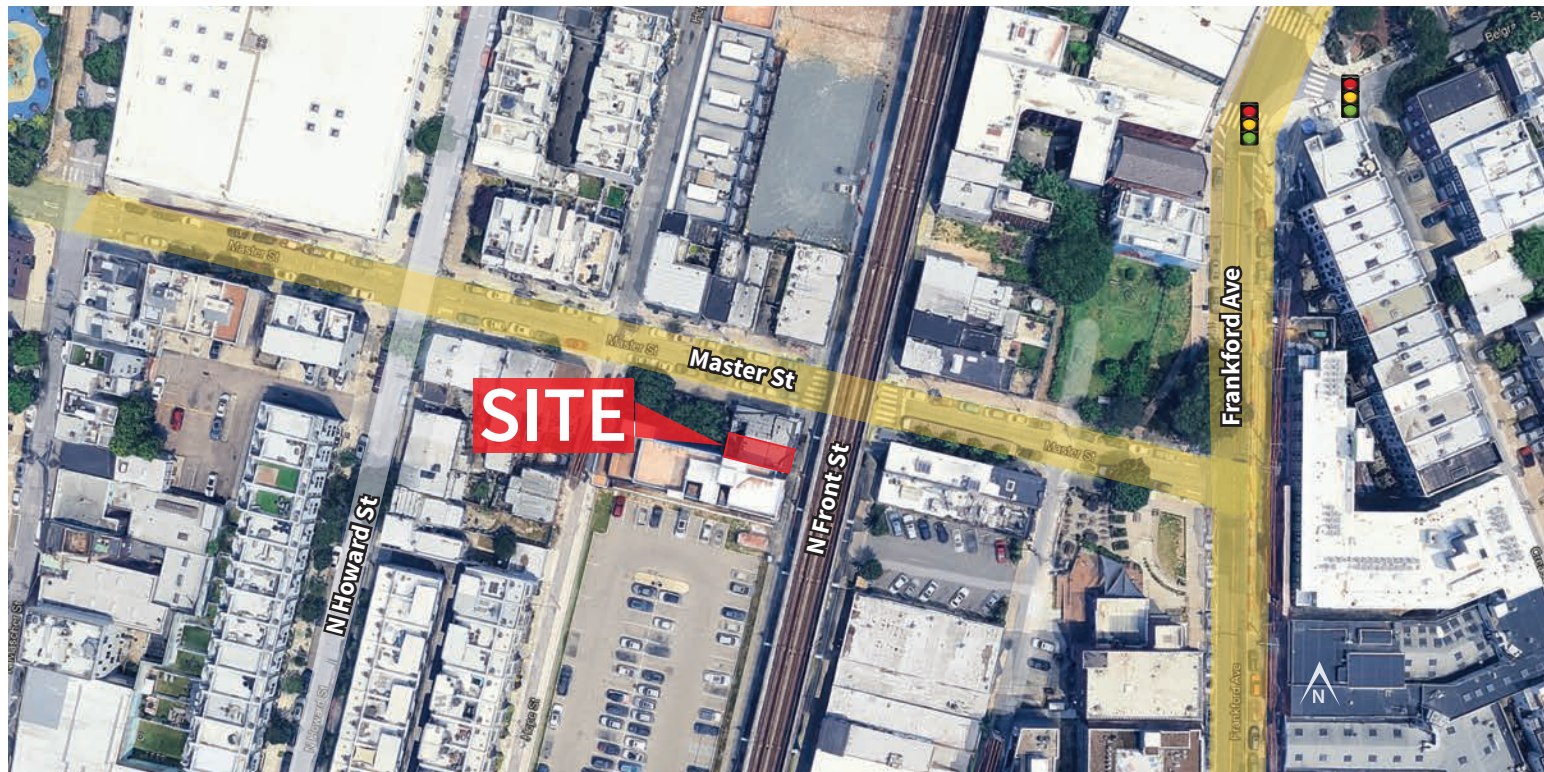
STEVE JEFFRIES
sjeffries@equitycre.com
DIRECT: 484.531.2250

WILLIAM CICCARELLI
wciccarelli@equitycre.com
DIRECT: 484.531.2209

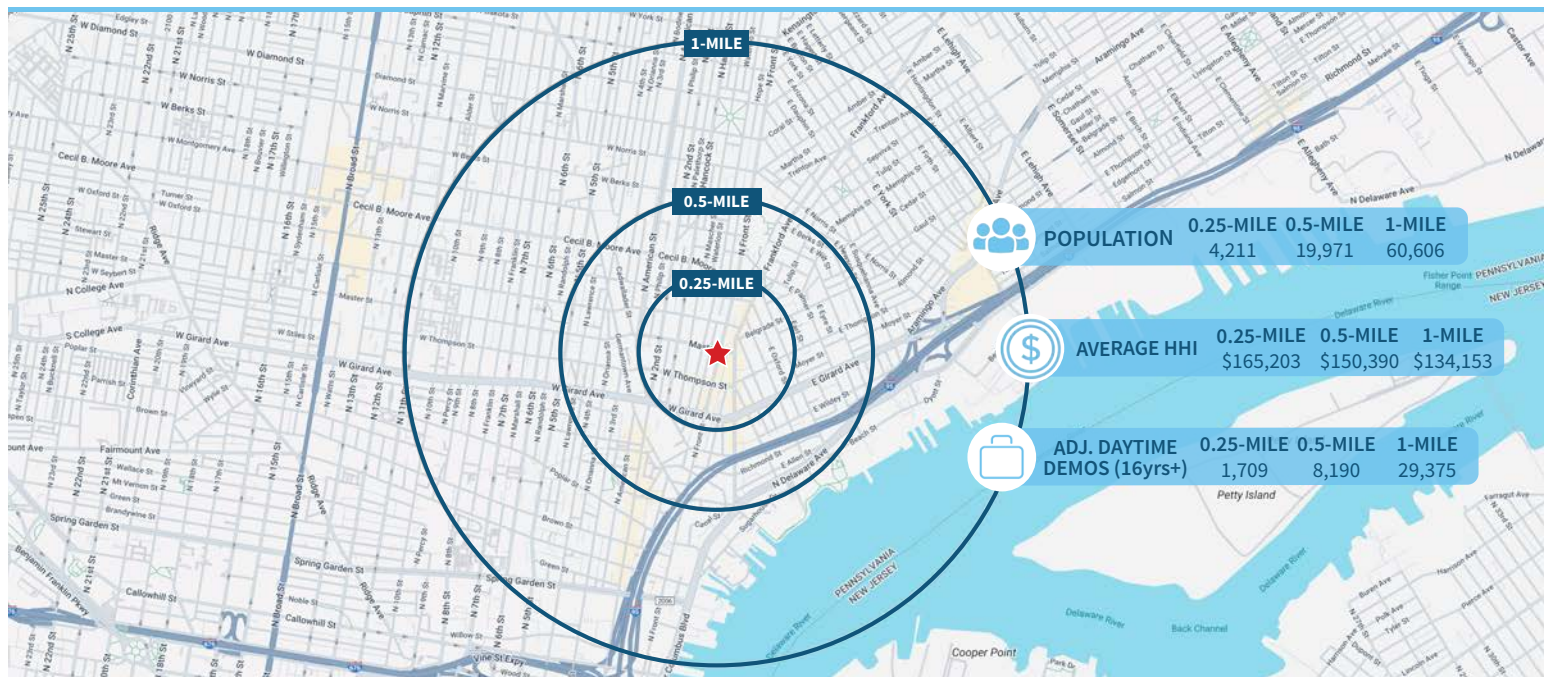
NATHAN RHODES
nrhodes@equitycre.com
DIRECT: 484.531.2076

**FOR LEASE: 2,670 SF GROUND FLOOR RETAIL SPACE
+ 1,160 SF BASEMENT**
1350 N Front St, Philadelphia, PA

EQUITY CRE



Demographic Overview (0.25, 0.5, 1-mile radius)



The right space. The right move.



CMRE CAPITAL MARKETS
REAL ESTATE NETWORK

Information concerning this offering is from sources deemed reliable but no warranty is made to the accuracy thereof and it is submitted subject to errors, omissions, changes of price or other conditions, prior to sale or lease or withdrawal without notice. Equity CRE is licensed in PA, NJ, & DE. Steve Jeffries, and William Ciccarelli are licensed salespersons in PA.

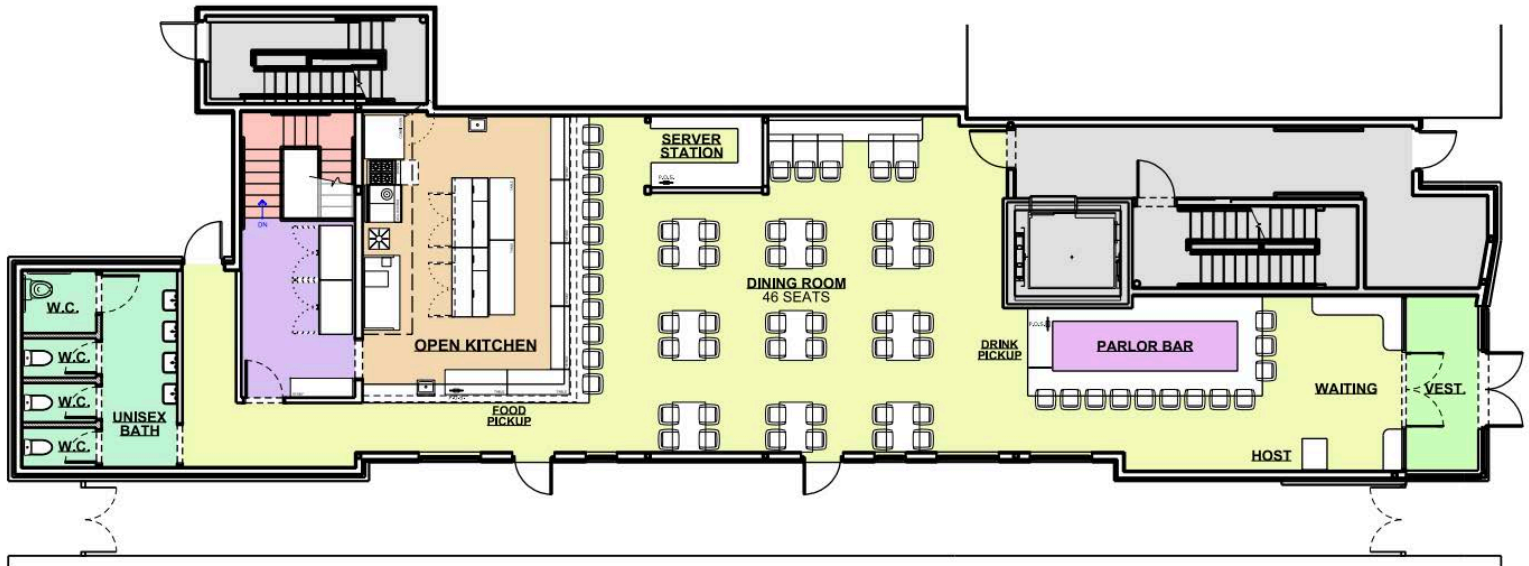
05/25

**FOR LEASE: 2,670 SF GROUND FLOOR RETAIL SPACE
+ 1,160 SF BASEMENT**

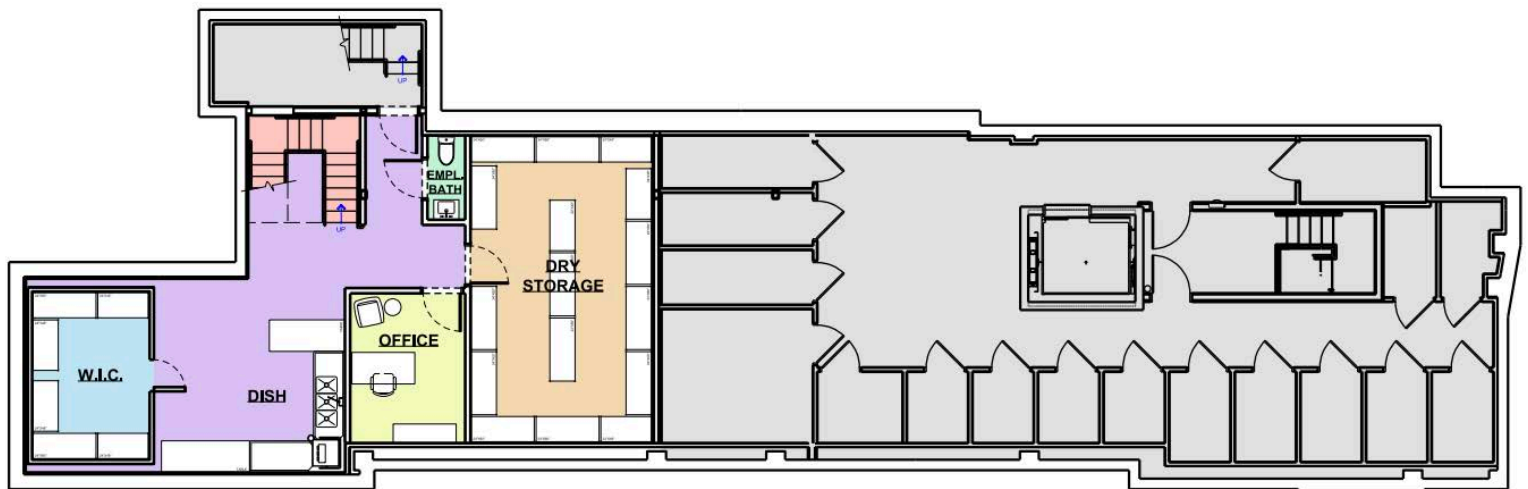
1350 N Front St, Philadelphia, PA

EQUITY CRE

FLOOR PLANS



RETAIL SPACE: 2,670 SF



BASEMENT: 1,160SF

1350 N. Front St | Philadelphia, PA

