



# COURT STREET CENTER

250 West Court Street  
Cincinnati, OH 45202







**FREE DOWNTOWN PARKING!**  
**3:1,000 RSF**  
**20 VISITOR SPACES**

## HIGHLIGHTS

- 100,000 SF four-story building in the Central Business District
- Office suites ranging from 5,515 - 19,223 SF
- Walkable to OTR and Court Street amenities
- On-site conference center
- 70' four story glass Atrium and abundant natural light

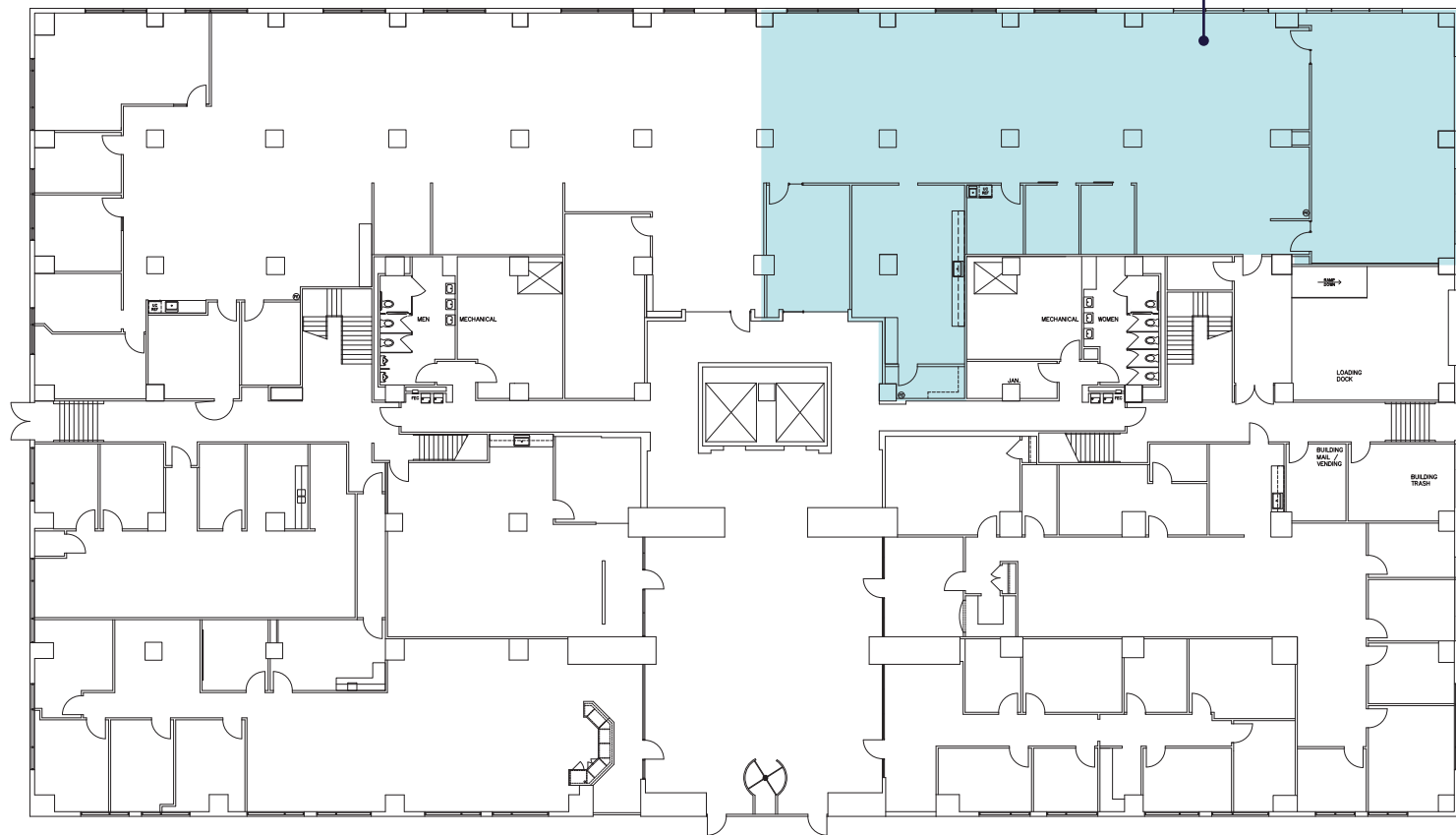
**\$14.50/rsf Net Rate + \$8.62/rsf + Electric OpEx**

- 24-hour magnetic key access with on-site security
- 30MM historic two-story Central Parkway YMCA located across the street featuring an indoor pool with 3 lap lanes, sauna, full basketball & racquetball court, indoor track, fitness center, cycling studio, child center and more!
- Property management on-site

# 1ST FLOOR

5,515 SF AVAILABLE

Suite 115E  
5,515 SF  
Available

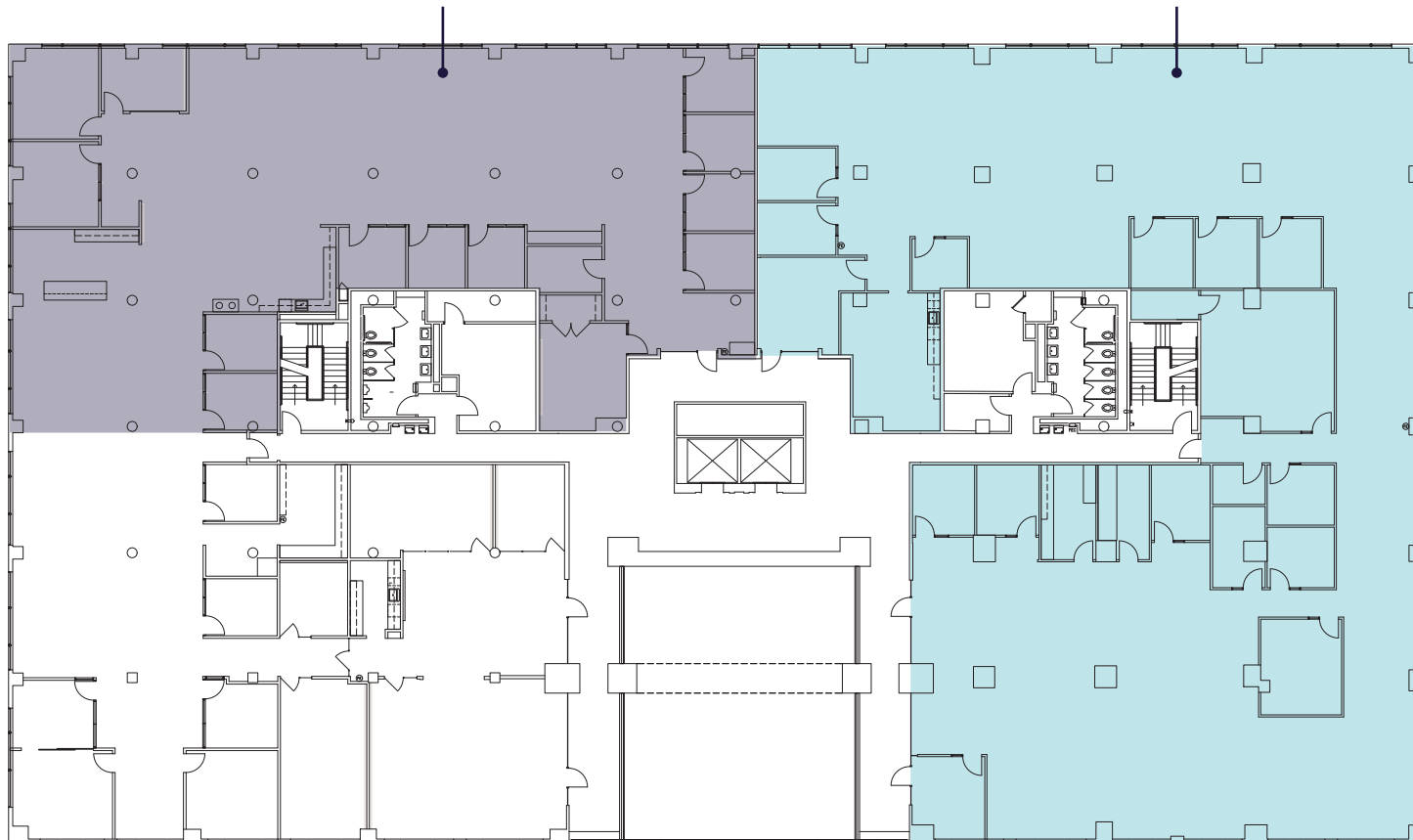


# 3RD FLOOR

19,223 SF AVAILABLE

Suite 315W  
6,461 SF  
Available

Suite 300E  
12,762 SF  
Available





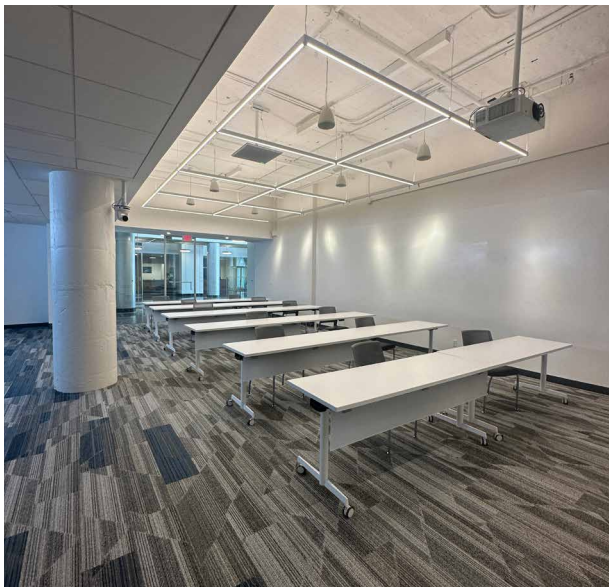


# NEW

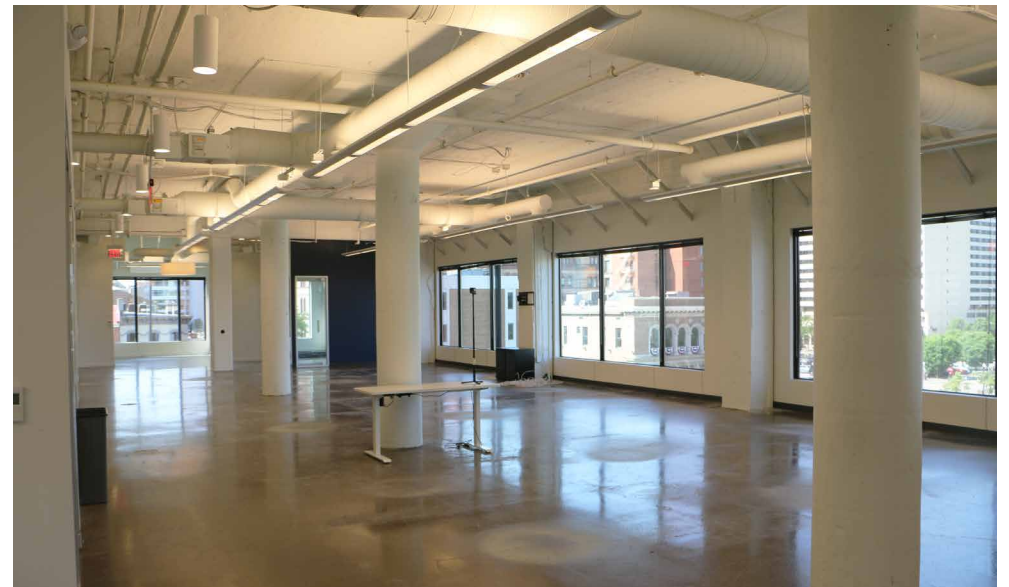
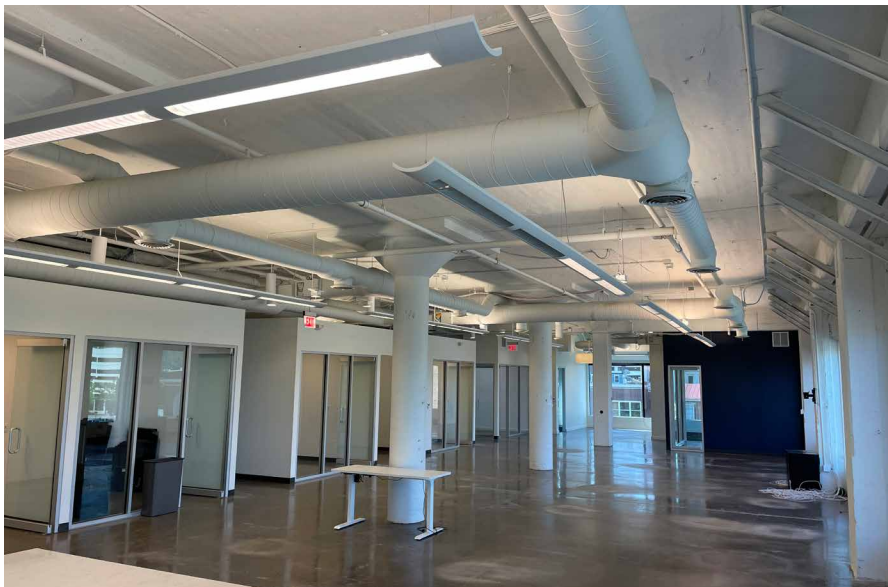
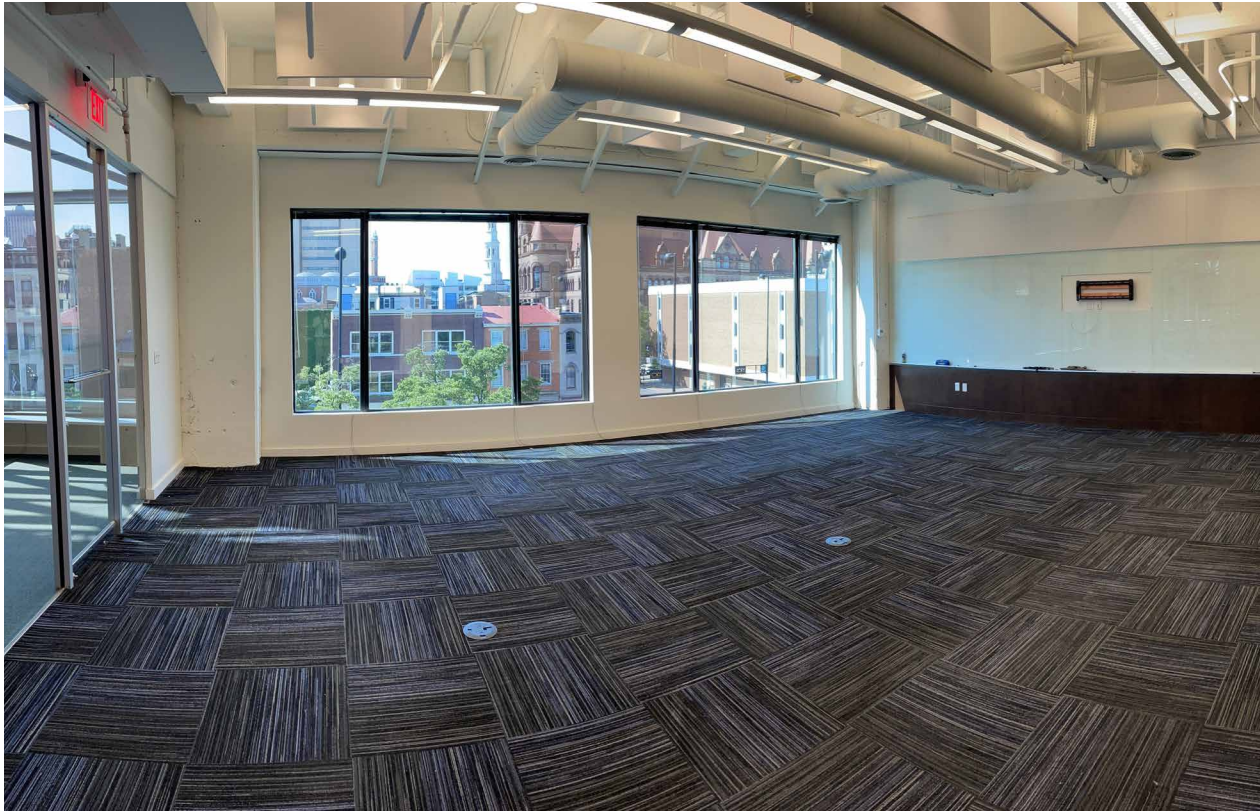
*STAIRS & ENTRANCE*

*LOBBY & ATRIUM*

*SHARED CONFERENCE ROOM*









# THE OTR MARKET







**JOE JANSZEN**

joe.janszen@cushwake.com  
+1 513 549 3011

**DIGGER DALEY**

digger.daley@cushwake.com  
+1 513 763 3028

**[cincyofficeadvisors.com](http://cincyofficeadvisors.com)**

©2025 Cushman & Wakefield. All rights reserved. The information contained in this communication is strictly confidential. This information has been obtained from sources believed to be reliable but has not been verified. NO WARRANTY OR REPRESENTATION, EXPRESS OR IMPLIED, IS MADE AS TO THE CONDITION OF THE PROPERTY (OR PROPERTIES) REFERENCED HEREIN OR AS TO THE ACCURACY OR COMPLETENESS OF THE INFORMATION CONTAINED HEREIN, AND SAME IS SUBMITTED SUBJECT TO ERRORS, OMISSIONS, CHANGE OF PRICE, RENTAL OR OTHER CONDITIONS, WITHDRAWAL WITHOUT NOTICE, AND TO ANY SPECIAL LISTING CONDITIONS IMPOSED BY THE PROPERTY OWNER(S). ANY PROJECTIONS, OPINIONS OR ESTIMATES ARE SUBJECT TO UNCERTAINTY AND DO NOT SIGNIFY CURRENT OR FUTURE PROPERTY PERFORMANCE.