

**HIGHLY DISCOUNTED
PREMIUM BUILDING SITES**

OFFICE • MEDICAL • DAYCARE

ORLANDO FLORIDA

NEW PRICE
\$219,000

READY TO BUILD
4,640 SF

UNIVERSITY ECON
EXECUTIVE CENTRE



Econlockhatchee Trail

900 N Econlockhatchee Trail,
Orlando, FL 32825

Roger Soderstrom Jr.

407-617-2830 • roger@stirlingint.com

John Kurtz

407-864-9488 • jkurtz@stirlingire.com



UNIVERSITY ECON

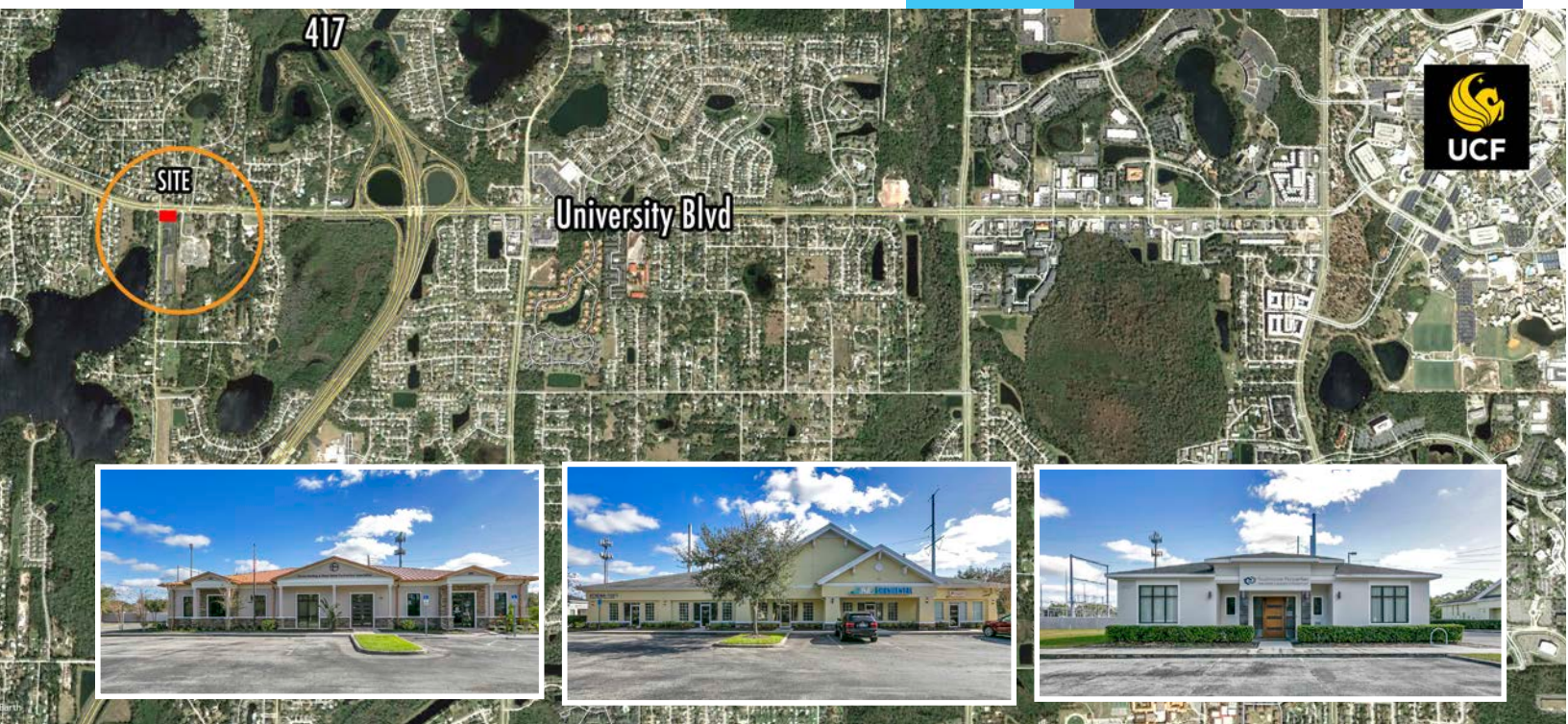
Between Winter Park and UCF Campus



E 4,640 SF

F PENDING



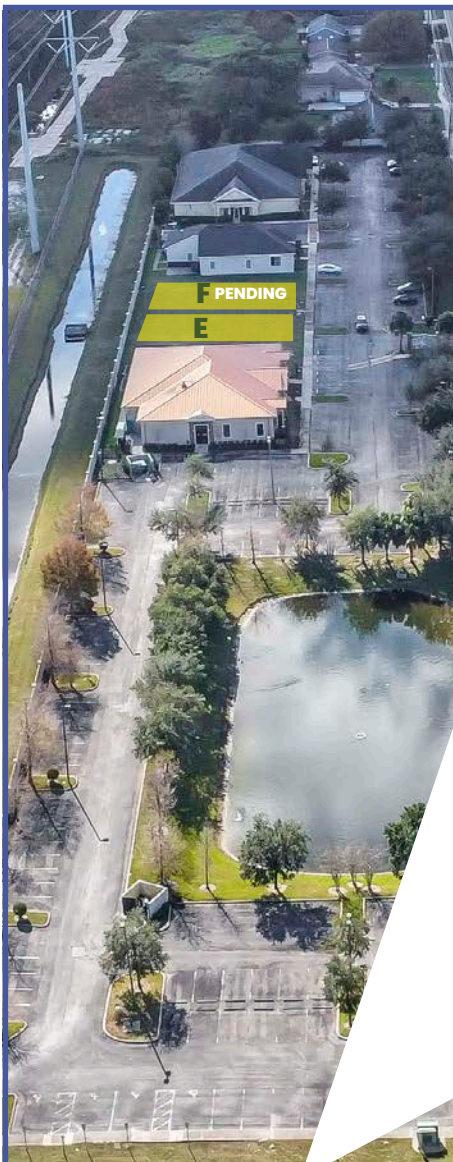


OFFICE | MEDICAL | DAYCARE

- 2 Office Pads - Building Sizes 4,640 SF to 7,902 SF
- Ideal for Professional Office, Medical offices or Daycare
- Corner site at major signalized intersection University Blvd 41,500 AADT and Econlockhatchee Trail 12,100 AADT
- Ample parking, 5 spaces per 1,000 Sq. Ft.
- High quality buildings standards
- Just West Office Central Florida Greenway 417 providing quick and easy access to literally anywhere in Orlando
- Minutes from major office parks, professional services, shopping, dining and entertainment
- 3.5 Miles to UCF Main Campus with over 66,000 students and 12,000 staff members
- 10 minutes to Downtown Orlando and Orlando Executive Airport, 15 Minutes to Orlando International Airport and Lake Nona Medical City, 20 Minutes to Lake Mary, Sanford International Airport, and Universal Studios.
- 2017 Population 1 Mile: 8,000: 3 Miles: 94,000: 5 Miles: 264,000
- Transpiration Impact Fees have been prepaid on all lots to guarantee capacity is available for building, buyer will reimburse seller for the prepaid fees of each lot at closing.

NEW PRICE
\$219,000
LOT E

UNIVERSITY ECON EXECUTIVE CENTRE



**READY FOR
CONSTRUCTION**
ORLANDO FLORIDA

**OFFICE - MEDICAL - DAYCARE
BUILDING PADS**

**CONVENIENT TO
UCF - Winter Park -
Downtown Orlando - Orlando
International Airport - Central
Florida Greenway 417**

**COMING SOON
10,000SF HIGH END
RETAIL CENTER**

Roger Soderstrom Jr.

407-617-2830 • roger@stirlingint.com

John Kurtz

407-864-9488 • jkurtz@stirlingire.com

STIRLING | INTERNATIONAL
REAL ESTATE

Offering is subject to errors, omission, prior sale or withdrawal without notice. University Econ units information, including sizes, pricing, property features, terms, availability and amenities, are subject to change, prior sale or withdrawal at any time without notice or obligation. Drawings, photographs, renderings, video, scale models, square footages, floor plans, elevations, features, colors and sizes are approximate for presentation purposes only and may vary from the homes as built. Home prices refer to the base price of the house and do not include options or premiums, unless otherwise indicated for a specific home. Nothing printed or on the website should be construed as legal, accounting or tax advice.