

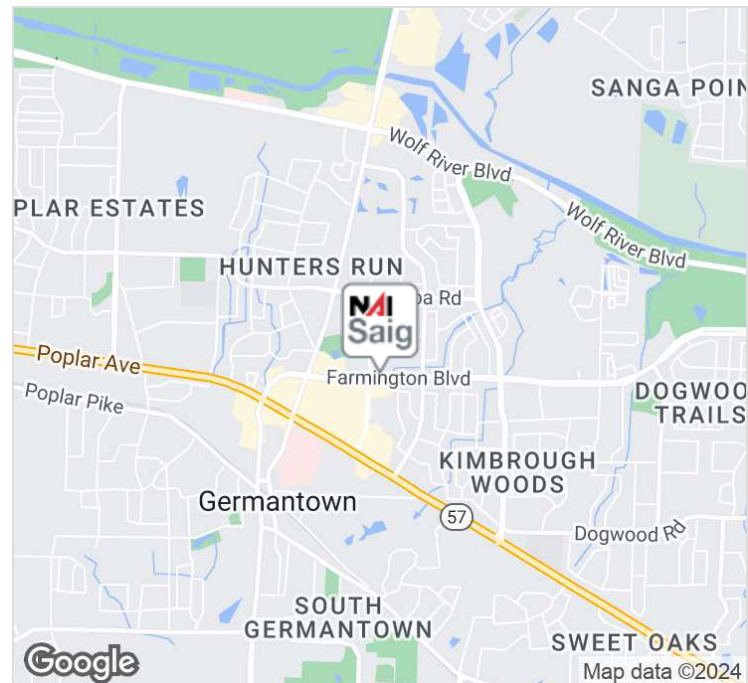


## 1900 Exeter Road

Germantown, Tennessee 38138

### Property Features

- Suite 210: 3,970 SF
- Asking rate per SF: \$30 Full-Service
- 11 offices
- Large conference room
- Cube area
- Large break room
- Full-time security in lobby
- Well located in the Heart of Germantown at Exeter Road across from GPAC



For more information:

**Brian Califf, CCIM**

901 526 3100 • [bcaliff@saigcompany.com](mailto:bcaliff@saigcompany.com)

NO WARRANTY OR REPRESENTATION, EXPRESS OR IMPLIED, IS MADE AS TO THE ACCURACY OF THE INFORMATION CONTAINED HEREIN, AND THE SAME IS SUBMITTED SUBJECT TO ERRORS, OMISSIONS, CHANGE OF PRICE, RENTAL OR OTHER CONDITIONS, PRIOR SALE, LEASE OR FINANCING, OR WITHDRAWAL WITHOUT NOTICE, AND OF ANY SPECIAL LISTING CONDITIONS IMPOSED BY OUR PRINCIPALS NO WARRANTIES OR REPRESENTATIONS ARE MADE AS TO THE CONDITION OF THE PROPERTY OR ANY HAZARDS CONTAINED THEREIN ARE ANY TO BE IMPLIED.

NAI Saig Company

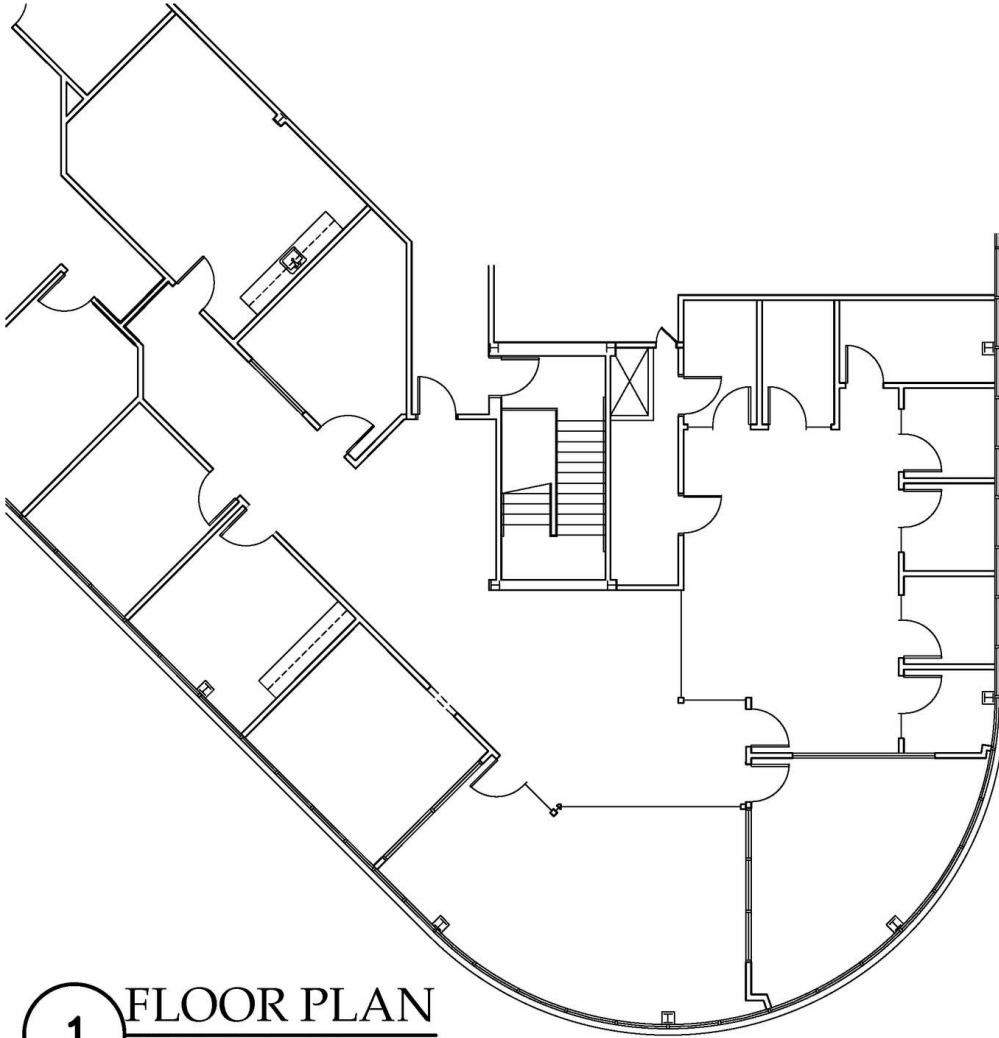
6263 Poplar Avenue Suite 150, Memphis, TN 38119

901 526 3100

[saigcompany.com](http://saigcompany.com)

For Lease

# Office



**1** FLOOR PLAN  
SCALE: 3/32" = 1'-0"

	Suite 210	PROJECT # 24820	
	1900 Exeter Rd. Germantown, TN	DATE: 8/16/24	
		DRAWN BY: CKM	
		<b>AB</b>	