

2,400 SF AVAILABLE
OCTOBER 1ST
RENT ESTIMATED AT
\$2,702/MONTH

\$8.00 PSF TRIPLE
NET
NETS ESTIMATED AT
\$5.51 PSF



FLEX SPACE FOR LEASE

5100 MERRIAM DR MERRIAM, KS



Property Highlights

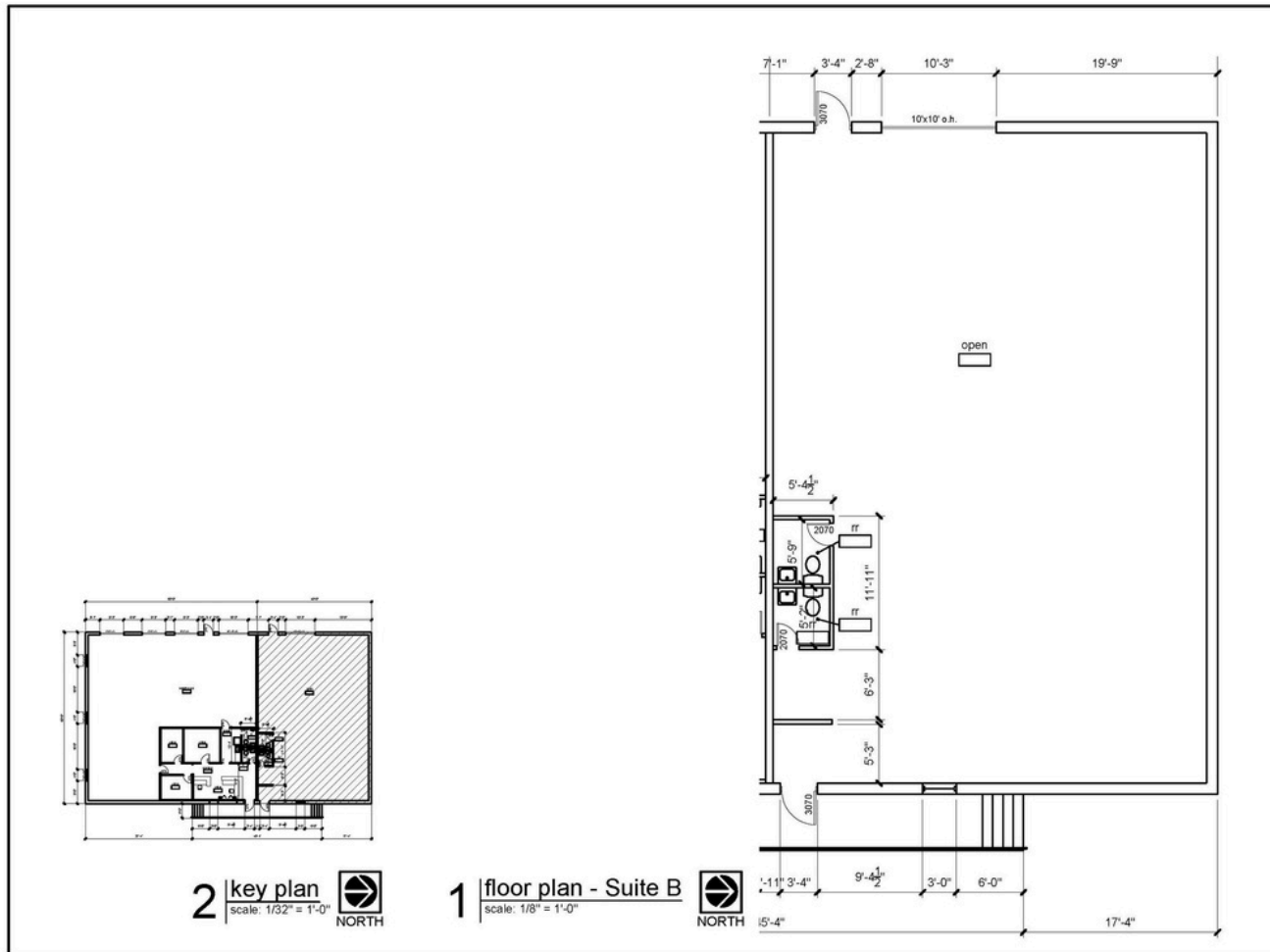
2,400 SF Available
Open warehouse with two restrooms
Warehouse is climate controlled
One 10x10 overhead garage door
Gated, fenced-in rear lot for secure storage
Excellent visibility on Merriam Dr.
10' to 12' clear heights

Member of



The Mission of Prism Real Estate Services, LLC™ is to improve the lives of people in our communities, one property at a time.

5100 MERRIAM DRIVE MERRIAM, KS



alan johnson design, llc
700 w. 47th st. #200
kansas city, missouri 64112
w 816.412.8455
e alan@alanjohnsondesign.com

an as-built drawing for
Prism Real Estate
5100 Merriam Drive - Suite B
Merriam, Kansas

DATE 04.08.22

DRAWN BY ajd

CHECKED BY ajd

REVISIONS

NO.	DESCRIPTION

SHEET NUMBER

A1.1

DRAWING TYPE

as-built

DWG FILE

5100 Merriam Drive

PROJECT NUMBER

13005-h



JACK SCHREIBER

913.320.3001

JSchreiber@prismres.com

FLOOR PLAN 5100 MERRIAM DR