

FOR LEASE

THE LAND TITLE BUILDING

100 SOUTH BROAD STREET
PHILADELPHIA, PA, 19110

Premier Office Building for Lease

Rental Rate: \$25.50 / RSF plus Electric

Availabilities ranging from:
1,100 RSF – 19,617 RSF Full Floor



100 S. BROAD ST



Welcome to the Land Title Building, designed by the renowned American architect Daniel Burnham, which boasts 365,000sf of office space over 22 floors. Constructed in 1898, it stands as one of the first buildings pioneering high-rise office towers in Philadelphia. Today, 100 S. Broad continues to thrive as a prominent office building, housing businesses and organizations across various sectors and serves as the Headquarters to the Center City District of Philadelphia.

BUILDING HIGHLIGHTS

- Unparalleled Connectivity: With direct access to SEPTA subway lines, regional rail stations, and major bus routes, commuting is seamless. Proximity to I-95 and I-76 ensures effortless travel for employees and clients alike.
- Onsite maintenance and management office
- 24-hour security guard service.
- Headquarters of the Center City District of Philadelphia
- Onsite deli serving breakfast and lunch.
- US Post Office located off the main lobby
- Steps to the Broad Street Line, Market-Frankford Line, bus routes, and ample parking.
- Custom Designed Office Space



215.568.8000

Suite 1410, 1628 JFK Boulevard,
Philadelphia, PA 19103

www.msfoxrealestate.com



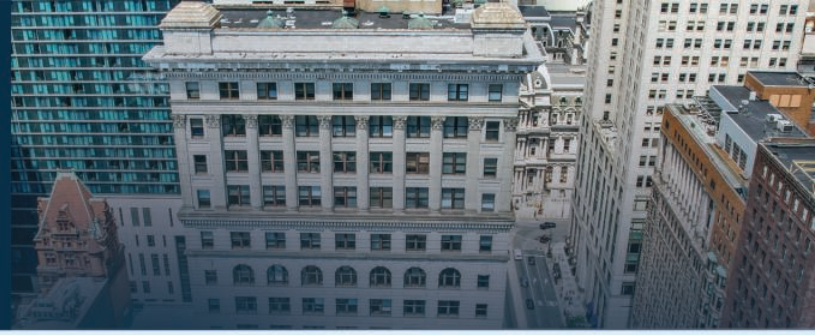
Michael Fox	215.603.7789	mfox@msfoxre.com
Brett Fox	215.760.8488	bfox@msfoxre.com
Mitchell Fox	215.264.4751	mitchfox@msfoxre.com

The information contained herein is from other sources believed to be reliable. No independent investigation of the property or the information contained herein has been made, and no representation is made as to the accuracy or completeness thereof. This information is subject to errors, omissions, prior sale or lease, or withdrawal without notice.

FOR LEASE

THE LAND TITLE BUILDING

100 SOUTH BROAD STREET, PHILADELPHIA, PA, 19110



100 S. BROAD STREET

an iconic address situated in the heart of Philadelphia's thriving Center City district. This premier office building offers unmatched convenience and accessibility, surrounded by the city's vibrant cultural, dining, and business hubs.



PRIME CENTER CITY LOCATION



VIBRANT SURROUNDINGS



BUSINESS HUB ADVANTAGE

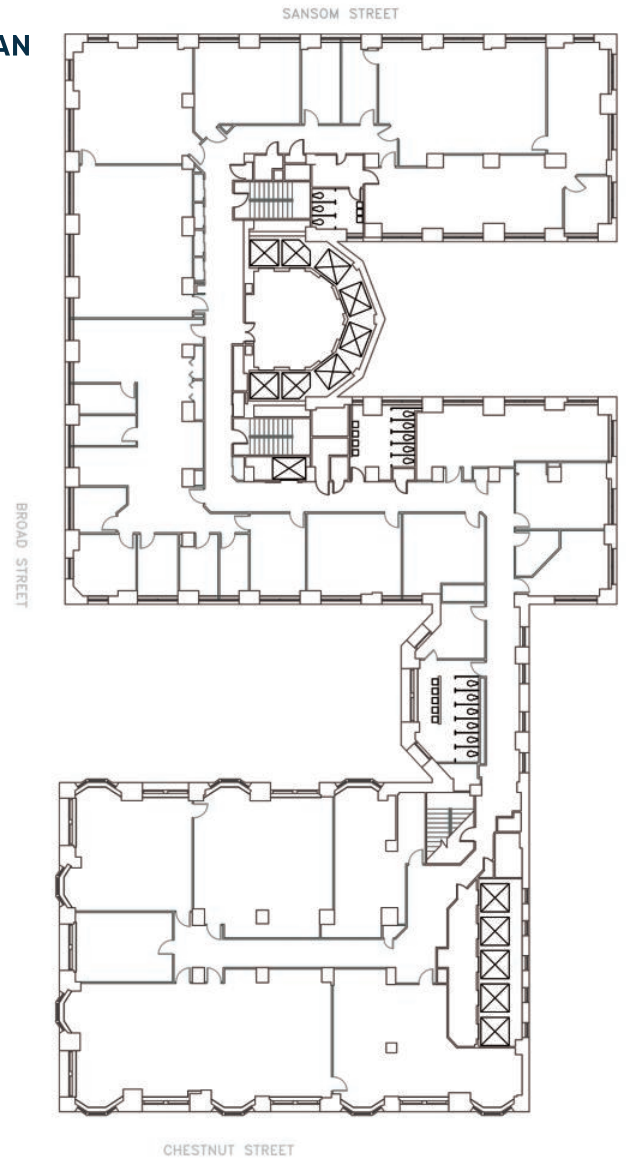
This prestigious address combines convenience, sophistication, and a dynamic urban environment, making it the ideal location for forward-thinking businesses.



NEIGHBORS INCLUDE:

- Capital Grille
- Union League of Philadelphia
- Philadelphia City Hall
- The Sporting Club at the Bellevue
- Ritz-Carlton
- Pennsylvania Convention Center
- Academy of Music
- Kimmel Center for Performing Arts

FLOOR PLAN



215.568.8000

Suite 1410, 1628 JFK Boulevard,
Philadelphia, PA 19103
www.msfoxrealestate.com

Michael Fox | 215.603.7789 | mfox@msfoxre.com
Brett Fox | 215.760.8488 | bfox@msfoxre.com
Mitchell Fox | 215.264.4751 | mitchfox@msfoxre.com



The information contained herein is from other sources believed to be reliable. No independent investigation of the property or the information contained herein has been made, and no representation is made as to the accuracy or completeness thereof. This information is subject to errors, omissions, prior sale or lease, or withdrawal without notice.