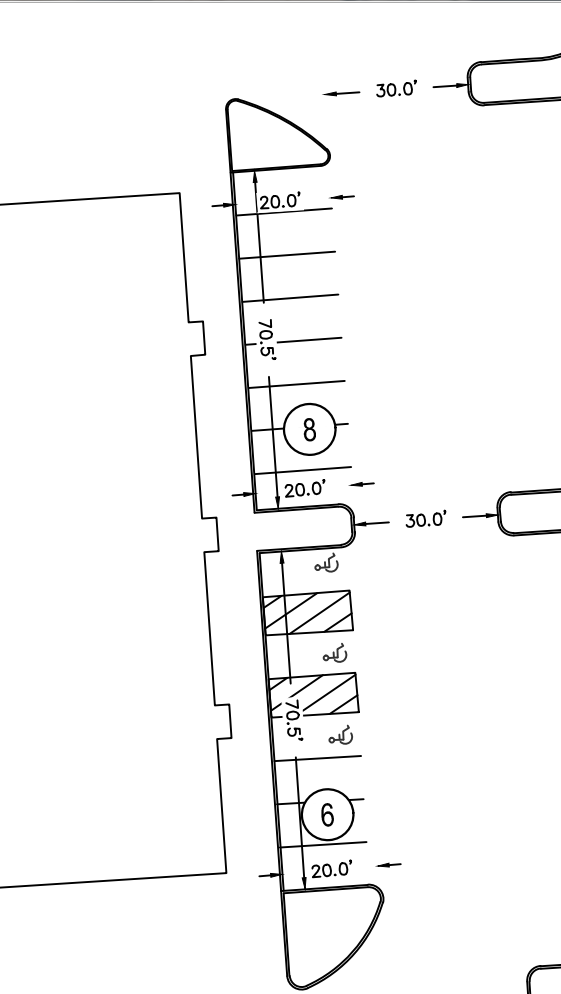
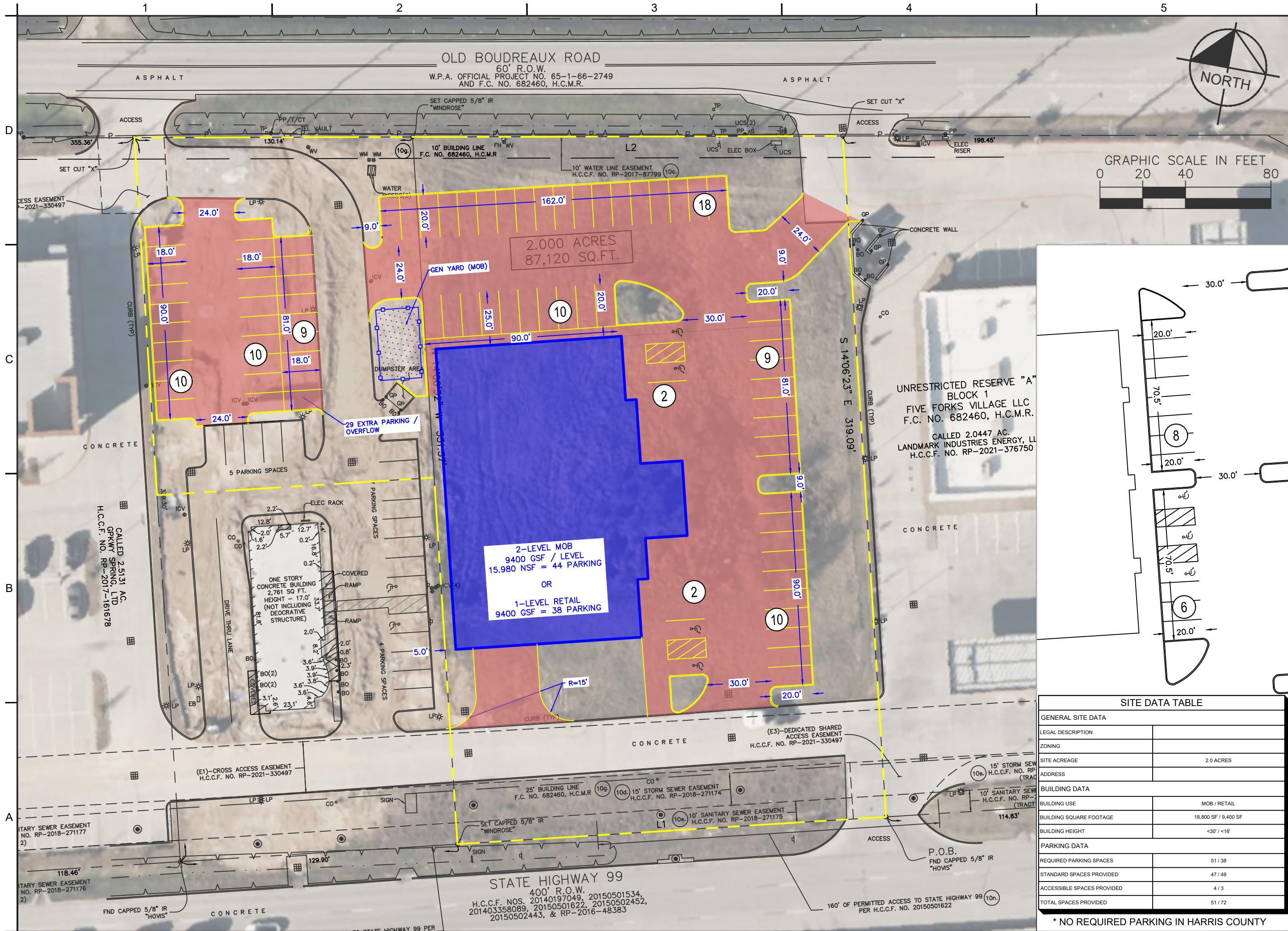


Printed By: Mailing - Jessica September 12, 2025 08:33:44am K:\MIDL_Civil\07779606-Smart Financial Grand Parkway\DWG\Site\SiteOption2.dwg
This document, together with the coverpages and designations herein, is an instrument of service, is intended only for the specific purpose and shall be without liability to Kimley-Horn and Associates, Inc.



SITE DATA TABLE	
GENERAL SITE DATA	
LEGAL DESCRIPTION	
ZONING	
SITE ACREAGE	2.0 ACRES
ADDRESS	
BUILDING DATA	
BUILDING USE	MOB / RETAIL
BUILDING SQUARE FOOTAGE	18,800 SF / 9,400 SF
BUILDING HEIGHT	<30' / <16'
PARKING DATA	
REQUIRED PARKING SPACES	51 / 38
STANDARD SPACES PROVIDED	47 / 49
ACCESSIBLE SPACES PROVIDED	4 / 3
TOTAL SPACES PROVIDED	51 / 72

* NO REQUIRED PARKING IN HARRIS COUNTY

Kimley-Horn

© 2025 KIMLEY-HORN AND ASSOCIATES, INC.
1400 WOODLARK FOREST DRIVE, SUITE 225
IRVING, TEXAS 75039-1400
WWW.KIMLEY-HORN.COM, TIRE FIRM NO. 028

FOR REVIEW ONLY

KHA PROJECT
067779606

DATE
9/12/2025

SCALE
AS SHOWN

DESIGNED BY
XXX

DRAWN BY
XXX

CHECKED BY
XXX

SITE PLAN
OPTION 2

SMART FINANCIAL
GRAND PARKWAY

HARRIS COUNTY
TEXAS

SHEET NUMBER