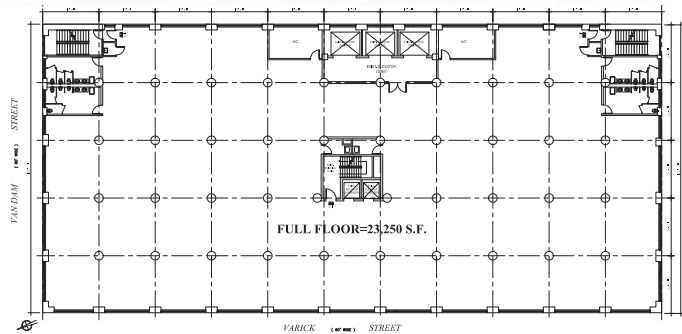


150 VARICK STREET HUDSON SQUARE - NYC

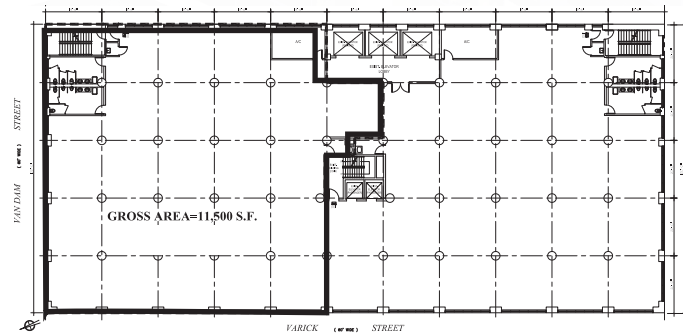
"WHERE SOHO, TRIBECA &
THE WEST VILLAGE MEET"

CURRENTLY AVAILABLE - 3RD FLOOR

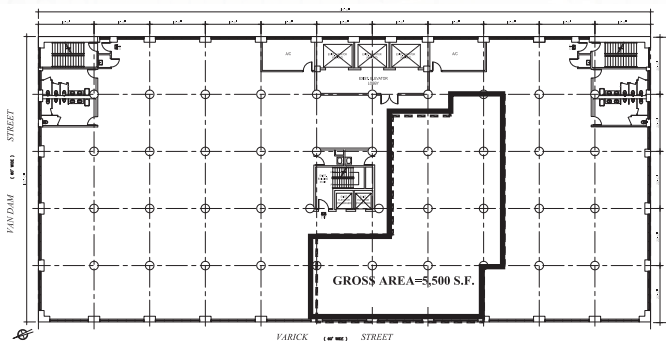
FULL FLOOR - 22,350 SF



11,500 SF DIVISION



5,500 SF DIVISION



© Greiner-Maltz Real Estate. Any information set forth herein has been obtained from sources deemed reliable, however, we have not verified it, and make no representation or warranty of any kind, including without limitation: condition: either latent or patent, size or manner of construction of the property, compliance with local law, and environmental conditions. All information submitted herein is subject to errors and omissions, and the right of our principal(s), to withdraw, modify, or condition the listing with-out prior notice. Broker cooperation encouraged.

GREINER-MALTZ
REAL ESTATE