



FINEBERG & ASSOCIATES
COMMERCIAL REAL ESTATE

104 S Main Street Bentonville, AR 72712

ARKREALESTATE.COM



LOTS 1 & 2 JOHNSON MILL BLVD - JOHNSON, AR

OFFERING SUMMARY

Lot Breakdown:	
Lot 1: 2.96 Acres	SOLD
Lot 2: 2.60 Acres	\$750,000
Zoning:	Town Center

PROPERTY HIGHLIGHTS

- Prominent medical office park within the Springdale Care Corridor
- Near Johnson Mill Square development
- Lot 2 accessible to all utilities
- 4 miles from Washington Regional Medical Center

PROPERTY OVERVIEW

Prime acreage for sale within minutes of Fayetteville & Springdale with I-49 visibility. Nearby businesses include Willow Creek Women's Hospital & NW Medical Center ER, Collier Drug Stores, Towneplace Suites, Arvest Ballpark, & many more. Johnson is an up-and-coming area for NWA with steady commercial development & residential growth.



ELISSA SONTAG
(479)531-1666
elissa@arkrealestate.com

BRENNAN SHARPE
(479)530-3774
brennan@arkrealestate.com





FINEBERG & ASSOCIATES
 COMMERCIAL REAL ESTATE
 104 S Main Street Bentonville, AR 72712

ARKREALESTATE.COM



FUTURE MILL CREEK NURSING FACILITY



HOG
 HIGHLANDS ONCOLOGY GROUP

Arkansas Children's Hospital

Arkansas BlueCross BlueShield

LOT 2



JOHNSON MILL BLVD

Collier
 DRUG STORES

Best Start
 PEDIATRICS

NORTHWEST NEUROSURGERY CLINIC

NWA UROLOGY

FUTURE COLLIER DRUG STORES DEVELOPMENT

ELISSA SONTAG
 (479)531-1666
 elissa@arkrealestate.com

BRENNAN SHARPE
 (479)530-3774
 brennan@arkrealestate.com

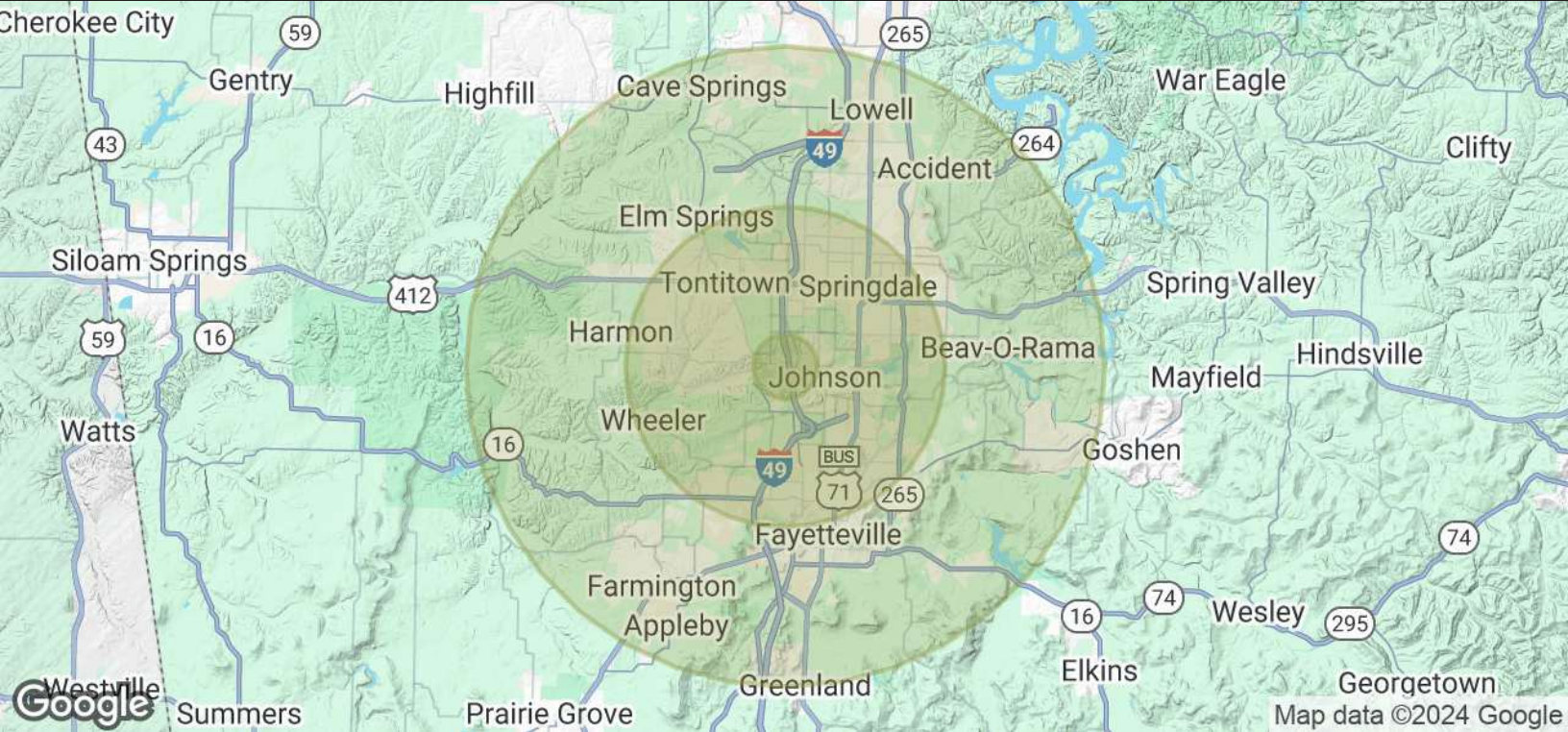




FINEBERG & ASSOCIATES
COMMERCIAL REAL ESTATE

104 S Main Street Bentonville, AR 72712

ARKREALESTATE.COM



POPULATION

1 MILE

5 MILES

10 MILES

Total Population	2,151	103,010	203,017
Average age	36.4	30.8	30.9
Average age (Male)	38.1	30.3	30.3
Average age (Female)	36.1	31.8	31.7

HOUSEHOLDS & INCOME

1 MILE

5 MILES

10 MILES

Total households	924	40,681	77,030
# of persons per HH	2.3	2.5	2.6
Average HH income	\$68,087	\$54,755	\$58,075
Average house value		\$198,207	\$216,313

* Demographic data derived from 2020 ACS - US Census

ELISSA SONTAG
(479)531-1666
elissa@arkrealestate.com

BRENNAN SHARPE
(479)530-3774
brennan@arkrealestate.com

