

Units 101 - 106

7063 Venture Street

DELTA, BC



15,346 Square Feet with 6 Grade Loading Doors in Tilbury

Vendor would consider selling units individually or together.

SHARE SALE OPPORTUNITY



Property Details

UNIT SIZE

	Per Unit	Total
Warehouse	1,807 SF	10,842 SF
Office*	750 SF	4,500 SF
TOTAL	2,557 SF	15,342 SF

*Approximately 3,000 SF of office tenanted

LOADING DOORS

6 grade level doors

ZONING

I-2

CEILING HEIGHT

20' clear in warehouse

YEAR BUILT

1991

STRATA FEES

\$1,266.12 per month

PROPERTY TAXES

\$58,382.70 (2024)

AVAILABILITIES

Unit	Size	Price
101 & 102	5,114 SF	\$2,276,322
103	2,557 SF	\$1,138,161
104	2,557 SF	\$1,138,161
105 & 106	5,114 SF	\$2,276,322
Total	15,342 SF	\$6,828,970

The Opportunity

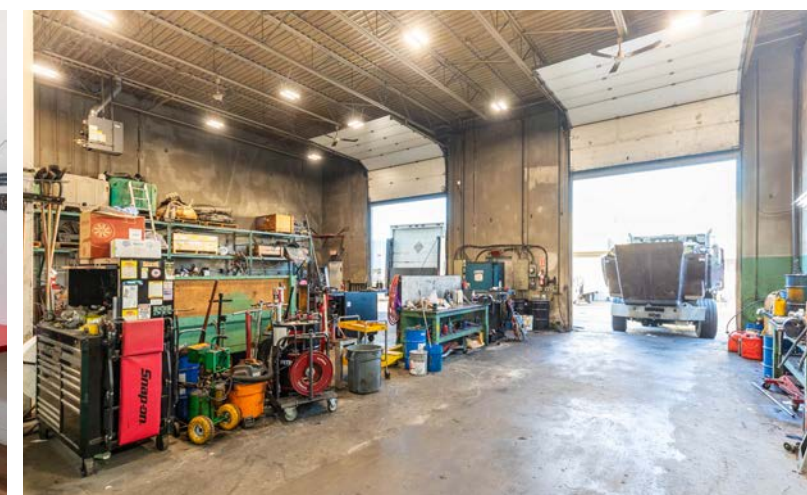
Units 101 - 106 at 7063 Venture Street, Delta offers 15,346 SF of premium industrial and office space with 6 grade loading doors.

- » Share sale opportunity to save on property transfer tax.
- » Opportunity to purchase all 6 units together, with 67% of the office space currently leased until 2026, providing potential rental income from the occupied office area.
- » Located within the highly sought-after Tilbury Industrial Park, one of Delta's most premier industrial park developments.



Property Features

- » Quality tilt-up concrete construction
- » Private offices
- » 3-phase electrical service
- » Gas forced air heater in warehouse
- » Electric baseboard heat in office areas
- » Security alarm system
- » Public transit nearby
- » I-2 zoning (allowing for a range of low to medium impact industrial uses and commercial and service commercial uses)
- » Quick access to Highway 99, 91 and 17 via River Road and South Fraser Perimeter Road





Connect With Us For More Information

LUC SOARES

Sales Associate
778 372 1938
luc.soares@cbre.com

STEVE BROOKE

PERSONAL REAL ESTATE CORPORATION
Executive Vice President
604 662 5147
steve.brooke@cbre.com

JOEL BARNETT

PERSONAL REAL ESTATE CORPORATION
Executive Vice President
604 662 5570
joel.barnett@cbre.com

ALEX MEI 梅嘉俊

PERSONAL REAL ESTATE CORPORATION
Vice President
778 788 3106
alex.mei@cbre.com



CBRE Limited | 1021 West Hastings Street #2500, Vancouver, BC V6E 0C3 | cbre.ca

theindustrialspecialists.com
@theindustrialspecialists

This disclaimer shall apply to CBRE Limited, Real Estate Brokerage, and to all other divisions of the Corporation; to include all employees and independent contractors ("CBRE"). The information set out herein, including, without limitation, any projections, images, opinions, assumptions and estimates obtained from third parties (the "Information") has not been verified by CBRE, and CBRE does not represent, warrant or guarantee the accuracy, correctness and completeness of the Information. CBRE does not accept or assume any responsibility or liability, direct or consequential, for the Information or the recipient's reliance upon the Information. The recipient of the Information should take such steps as the recipient may deem necessary to verify the Information prior to placing any reliance upon the Information. The Information may change and any property described in the Information may be withdrawn from the market at any time without notice or obligation to the recipient from CBRE. CBRE and the CBRE logo are the service marks of CBRE Limited and/or its affiliated or related companies in other countries. All other marks displayed on this document are the property of their respective owners. All Rights Reserved. Mapping Sources: Canadian Mapping Services canadamapping@cbre.com; DMTI Spatial, Environics Analytics, Microsoft Bing, Google Earth. Images: Southgranville.org