

FOR LEASE

BALTIMORE COUNTY, MD

3114 LORD BALTIMORE DR

EXECUTIVE PARK WEST | 3100-3300 LORD BALTIMORE DRIVE | WINDSOR MILL, MD 21244



PROPERTY HIGHLIGHTS:

- ▶ RECENTLY ADDED! FITNESS CENTER AND CONFERENCE ROOM
- ▶ TOTAL OF 450,000 SQUARE FEET IN TWELVE BUILDINGS IN THIS 30-ACRE BUSINESS PARK
- ▶ WITHIN 3 MILES OF SOCIAL SECURITY ADMINISTRATION HEADQUARTERS AND CENTER FOR MEDICARE AND MEDICAID SERVICES
- ▶ WITHIN TWO (2) MILES OF BELTWAY EXIT 17 AT SECURITY BOULEVARD

DAVID S. BROWN
ENTERPRISES, L.T.D.

KEVIN KEANE | SVP, OFFICE LEASING
410.581.2519 | KEVIN@DAVIDSBROWN.COM

BRENT MANGUM | VP, OFFICE LEASING
410.581.2518 | BRENT@DAVIDSBROWN.COM

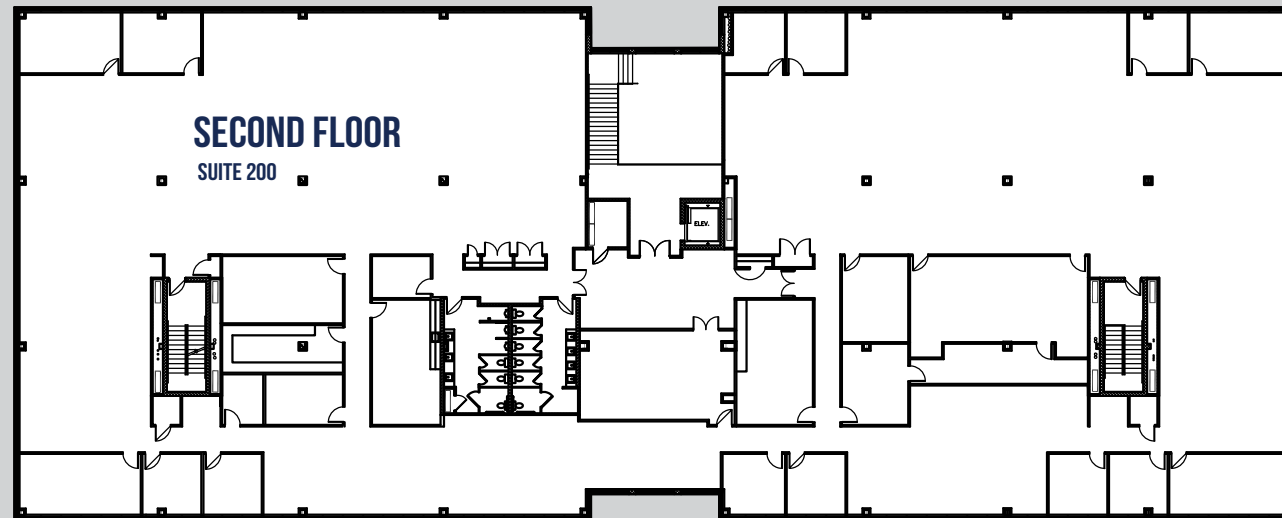
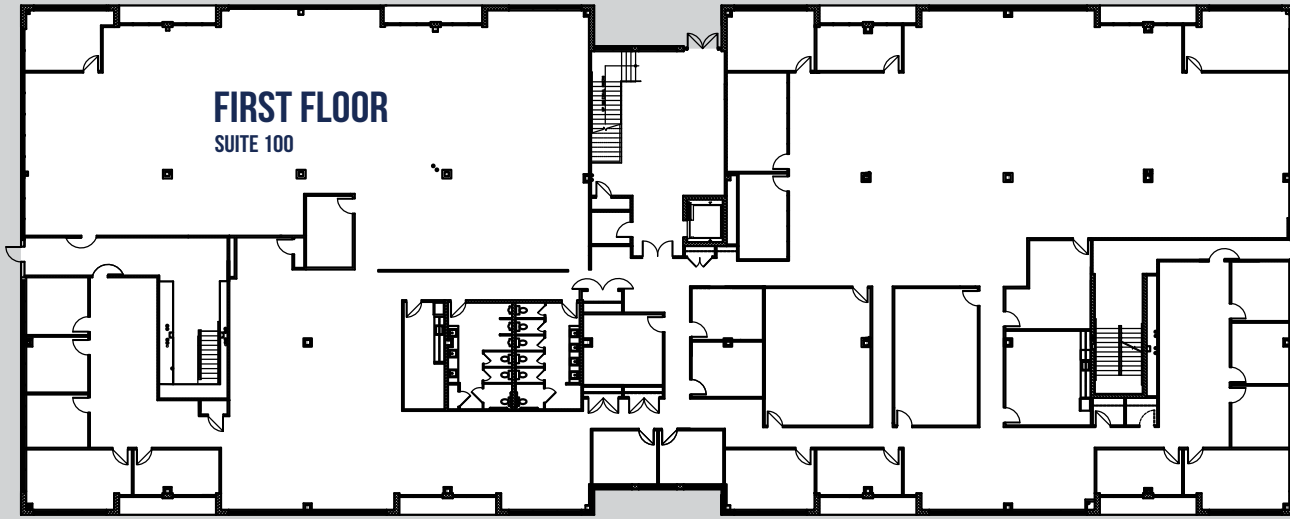
RYAN BARRETT | LEASING ASSOCIATE
410.581.2521 | RBARRETT@DAVIDSBROWN.COM

FOR LEASE

BALTIMORE COUNTY, MD

3114 LORD BALTIMORE DR

EXECUTIVE PARK WEST | 3100-3300 LORD BALTIMORE DRIVE | WINDSOR MILL, MD 21244



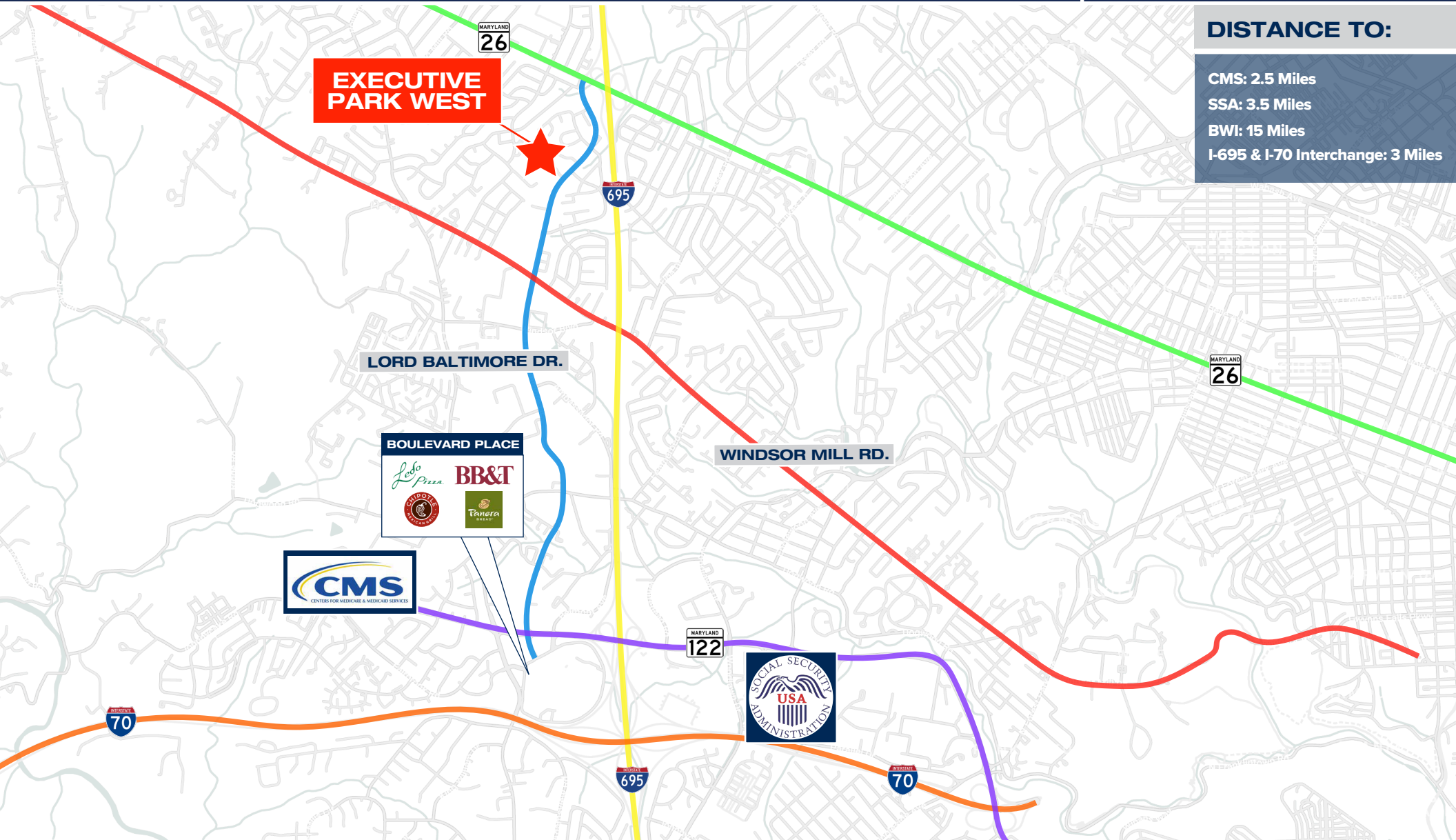
AVAILABLE

- ▶ SUITE 100 - 23,247 SF
- ▶ SUITE 200 - 24,207 SF

3114 LORD BALTIMORE DR

EXECUTIVE PARK WEST | 3100-3300 LORD BALTIMORE DRIVE | WINDSOR MILL, MD 21244

MAP



DISTANCE TO:

- CMS: 2.5 Miles
- SSA: 3.5 Miles
- BWI: 15 Miles
- I-695 & I-70 Interchange: 3 Miles