

1700 Union Avenue
Baltimore, MD 21211



AVAILABLE FOR LEASE



AVAILABILITY

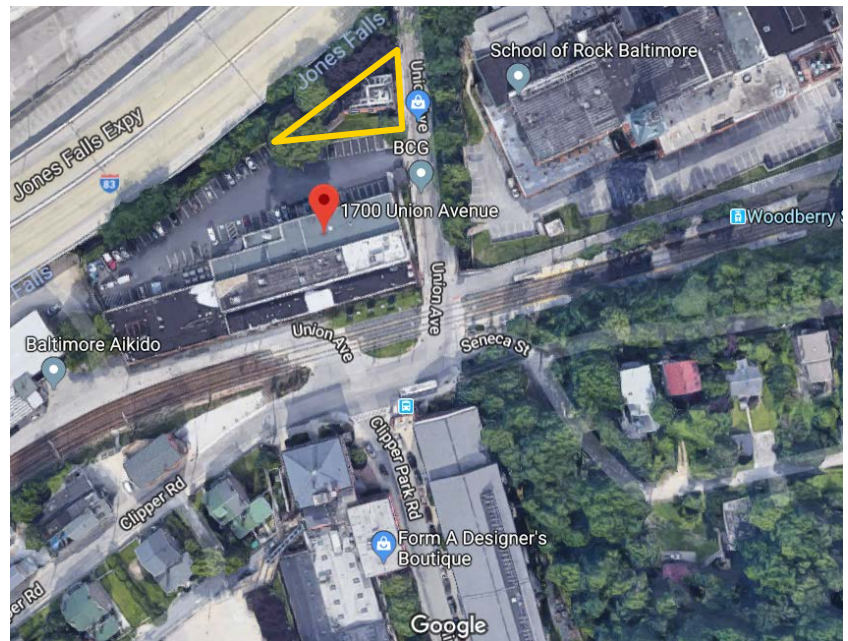
- 500 sf – 2,800 sf available

RENTAL RATE

- \$25.00 per Sq. Ft. Net of U&J

PROPERTY FEATURES

- Stand Alone Office Building in Hampden with secure surface parking
- Shares a light rail stop with Meadow Mill & Clipper Mill
- Easy access to I-83; minutes to I-695 to the North and Downtown Baltimore to the South



FOR ADDITIONAL INFORMATION, CONTACT

MICHAEL BENDER

410.935.9408

mbender@agmcommercial.com

DOUGLAS KAUFMAN

410.952.3290

dkaufman@agmcommercial.com

AGM Commercial Real Estate Advisors 921 E. Fort Avenue, Suite 230 Baltimore, MD 21230 www.agmcommercial.com

Although information contained herein is from sources deemed reliable, such information has not been verified and is submitted subject to errors, omissions, change of price, withdrawal or further change without notice. We include projections, opinion, assumptions or estimates for example only, and they may not represent current or future performance of the property. You, along with your tax and legal advisors, should conduct your own investigation of the property and transaction.

1700 Union Avenue
Baltimore, MD 21211



A
V
A
I
L
A
B
L
E

F
O
R

L
E
A
S
E



FOR ADDITIONAL INFORMATION, CONTACT

MICHAEL BENDER

410.935.9408

mbender@agmcommercial.com

DOUGLAS KAUFMAN

410.952.3290

dkaufman@agmcommercial.com

AGM Commercial Real Estate Advisors 921 E. Fort Avenue, Suite 230 Baltimore, MD 21230 www.agmcommercial.com

Although information contained herein is from sources deemed reliable, such information has not been verified and is submitted subject to errors, omissions, change of price, withdrawal or further change without notice. We include projections, opinion, assumptions or estimates for example only, and they may not represent current or future performance of the property. You, along with your tax and legal advisors, should conduct your own investigation of the property and transaction.

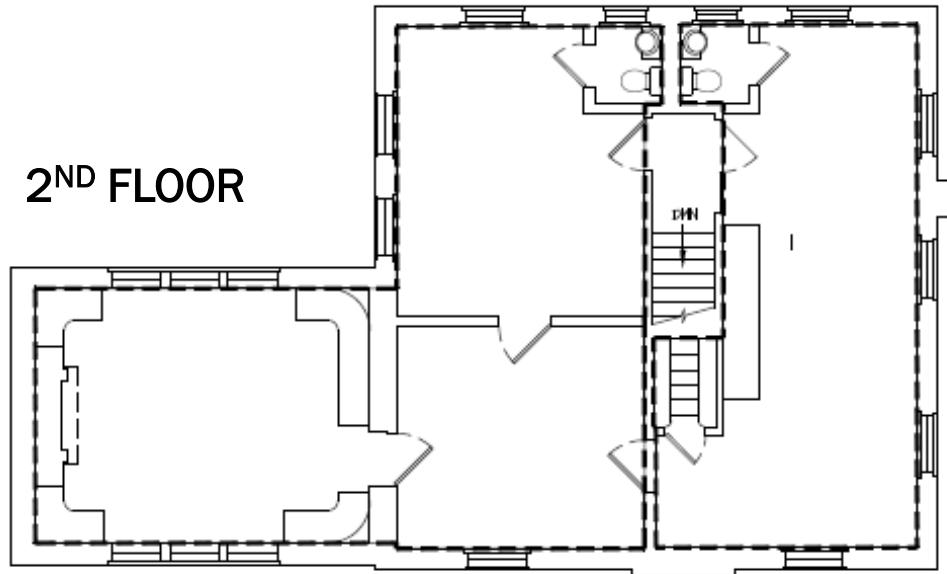
1700 Union Avenue
Baltimore, MD 21211



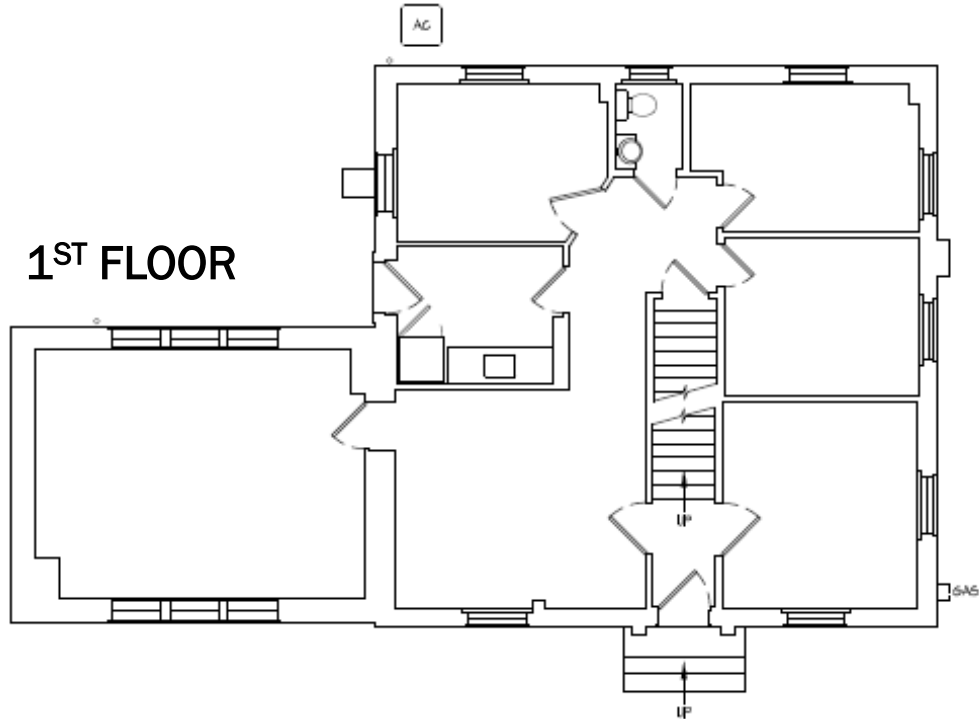
A
V
A
I
L
A
B
L
E

F
O
R
L
E
A
S
E

2ND FLOOR



1ST FLOOR



FOR ADDITIONAL INFORMATION, CONTACT

MICHAEL BENDER

410.935.9408

mbender@agmcommercial.com

DOUGLAS KAUFMAN

410.952.3290

dkaufman@agmcommercial.com

AGM Commercial Real Estate Advisors 921 E. Fort Avenue, Suite 230 Baltimore, MD 21230 www.agmcommercial.com

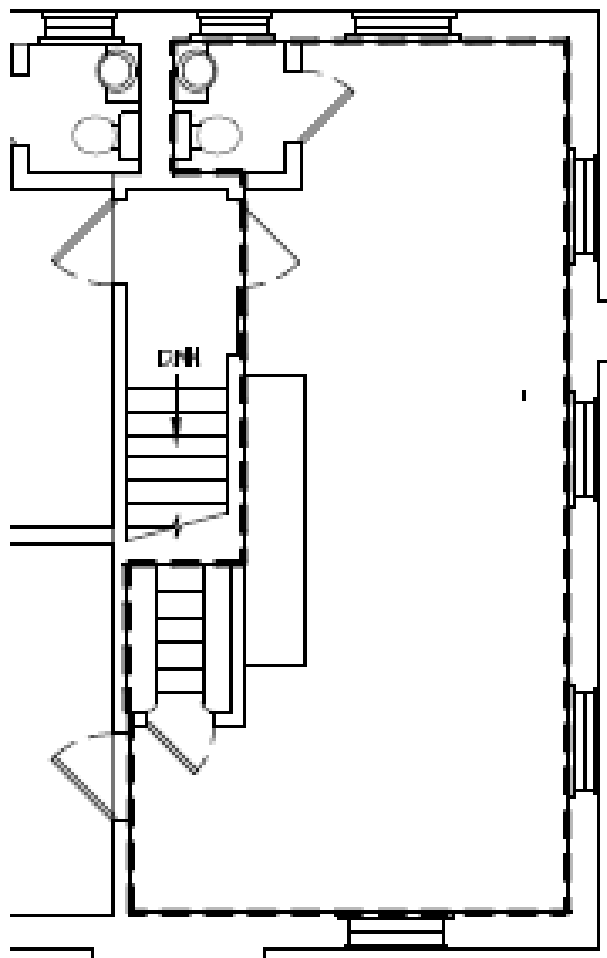
Although information contained herein is from sources deemed reliable, such information has not been verified and is submitted subject to errors, omissions, change of price, withdrawal or further change without notice. We include projections, opinion, assumptions or estimates for example only, and they may not represent current or future performance of the property. You, along with your tax and legal advisors, should conduct your own investigation of the property and transaction.

1700 Union Avenue
Baltimore, MD 21211



A
V
A
I
L
A
B
L
E

F
O
R
L
E
A
S
E



2ND FLOOR

FOR ADDITIONAL INFORMATION, CONTACT

MICHAEL BENDER

410.935.9408

mbender@agmcommercial.com

DOUGLAS KAUFMAN

410.952.3290

dkaufman@agmcommercial.com

AGM Commercial Real Estate Advisors 921 E. Fort Avenue, Suite 230 Baltimore, MD 21230 www.agmcommercial.com

Although information contained herein is from sources deemed reliable, such information has not been verified and is submitted subject to errors, omissions, change of price, withdrawal or further change without notice. We include projections, opinion, assumptions or estimates for example only, and they may not represent current or future performance of the property. You, along with your tax and legal advisors, should conduct your own investigation of the property and transaction.