



Issue	Description	Date
-------	-------------	------

257 PARK AVENUE SOUTH, SUITE 800
NEW YORK, NEW YORK 10010
TEL 212-682-6909 FAX 212-867-8852

4456 AMBOY RD.
STATEN ISLAND, NY 10312
1ST FLOOR

1ST FLOOR PARTITION PLAN

A-100.00

KEY NOTES

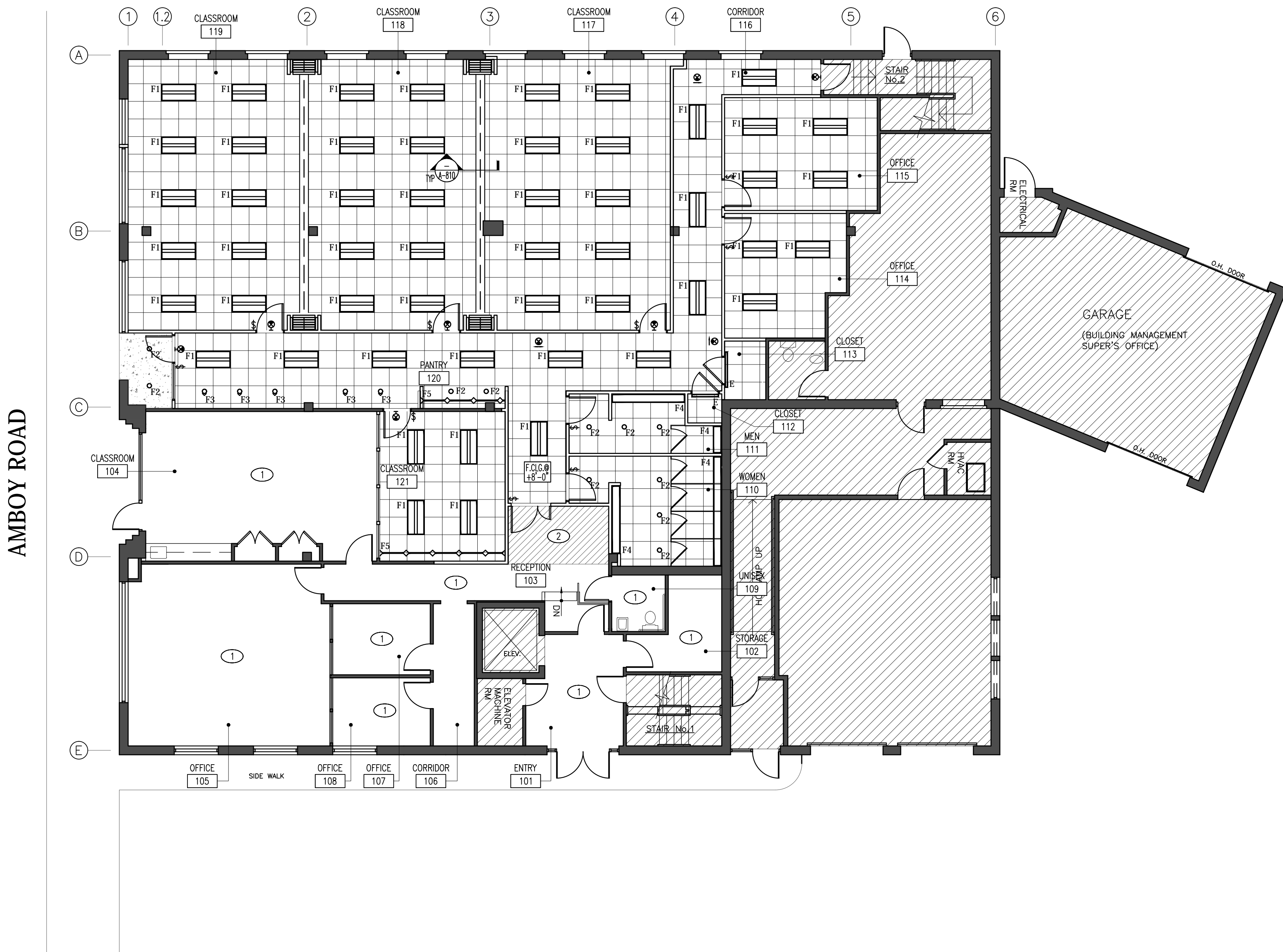
A 1 PARTITION TYPE (SEE A-8 SHEET SERIES)
 HOURLY RATING (IF APPLIES)
 NEW CONSTRUCTION
 PARTIAL HEIGHT WINDOW (WITH SILL)
 DOOR TYPE
 HARDWARE TYPE
 EXISTING CONSTRUCTION TO REMAIN
 NEW 1 HOUR FIRE RESISTANT RATED PARTITION
 EXISTING 1 HOUR RATED PARTITION
 NEW MILLWORK WITH OVERHEAD CABINETS
 NEW SLOPED SLAB - REFER TO
 DETAILS FOR MORE INFORMATION
 AREA NOT IN CONTRACT
 FIRE EXTINGUISHER
 FIRE EXTINGUISHER @ FIRE
 EXTINGUISHER CABINET. SEE DETAIL
 WATER LINE

- ① NO NEW WORKS IN THIS AREA.
- ② NEW OPENING TO ALIGN WITH EXISTING WINDOW MULLION
- ③ PATCH WITH MASONRY TO MATCH EXISTING.

ANNOTATIONS

REFER TO ENLARGED PLAN A-600.00 FOR NEW RESTROOM FIXTURES

6/4 PM 5/17/12 P:\WORK\UNITED FEDERATION OF TEACHERS\PROJECTS\2012\0511\STATEN ISLAND FACILITY\PROJECT DRAWINGS\STATEN ISLAND FACILITY\REFLECTED CEILING PLAN.DWG 100% TEST FLOOR REFLECTED CEILING PLAN.DWG



LEGEND

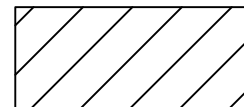
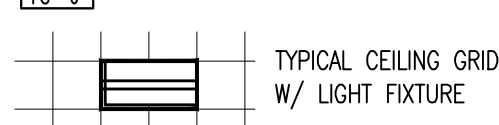
- ⊙ CEILING MOUNTED SMOKE DETECTOR
- ⊙ CEILING MOUNTED SPEAKER
- ⊙ CEILING MOUNTED FIRE HORN
- ◆ CEILING MOUNTED FIRE SPRINKLER
- ⊙ CEILING MOUNTED STROBE
- ⊙ CEILING MOUNTED STROBE
- ⊙ WALL MOUNTED STROBE @ 80" A.F.F.
- ⊙ CEILING MOUNT MOTION SENSOR TWO-WAY
- ⊙ CEILING MOUNT MOTION SENSOR FOUR-WAY
- ⊙ CEILING MOUNTED EMERGENCY LIGHT
- ⊙ 1X1 DIFFUSER
- ⊙ 1X1 RETURN GRILL
- ⊙ 2X2 DIFFUSER
- ⊙ 2X2 RETURN GRILL
- LINEAR DIFFUSER
- ⊙ SECURITY CAMERA

ANNOTATIONS

- D - DENOTES DEMOLITION
- E - DENOTES EXISTING TO REMAIN
- R - DENOTES RELOCATED
- ⊙+80"- INDICATES MOUNTING HEIGHT A.F.F.
- PS - INDICATES USE FOR PROJECTION SCREEN
- 3 - INDICATES THREE WAY SWITCH

- ⊙ CEILING MOUNTED ONE SIDED EXIT SIGN
- ⊙ CEILING MOUNTED TWO SIDED EXIT SIGN
- ⊙ WALL MOUNTED ONE SIDED EXIT SIGN
- ⊙ 2X4 FLUORESCENT LIGHTING FIXTURE
- CEILING RECESSED FLUORESCENT
- ⊙ CEILING MOUNTED WALL WASHER
- SURFACE MOUNTED TASK LIGHT
- WALL MOUNTED SINGLE LIGHT SWITCH
- WALL MOUNTED SINGLE DIMMER SWITCH

F.O.C. @ +8'-0" CEILING HEIGHT LABEL



AREA NOT IN CONTRACT

SHEET NOTES

- SEE SPECIFICATION SHEETS FOR ADDITIONAL NOTES AND ABBREVIATIONS.
- PROVIDE ACCESS PANELS WHERE REQUIRED IN GYP.B.D. CEILING INCLUDING, BUT NOT LIMITED TO:
 - FIRE SMOKE DAMPERS
 - FIRE LIFE SAFETY J-BOXES
 - FAN COILS AND VAV BOXES PER MANUFACTURER'S WRITTEN RECOMMENDATIONS
 - CONDUIT BANK PULL BOXES
 - CONTROL AND SHUT OF VALVESUNLESS OTHERWISE SHOWN PROVIDE FLUSH DRYWALL TYPE ACCESS PANELS W/ CONCEALED FRAME AT ALL NON RATED LOCATIONS.
- CEILING TILE AND GRID TO BE ARMSTRONG OPTIMA TILE AND 9/16" TEGULAR GRID. REFER TO FINISH SCHEDULE FOR MORE INFORMATION.

LIGHTING NOTES

- ALL LAMPS TO BE PHILIPS "ALTO" OR GREEN TIP LOW MERCURY OR MERCURY FREE U.O.N. GC TO SUBMIT CUT SHEETS FOR ALL LAMPS FOR APPROVAL.
- CONTRACTOR TO PROVIDE ALL PARTS AND HARDWARE NECESSARY FOR A COMPLETE INSTALLATION.
- ALL LAMPS SHALL HAVE A TEMPERATURE OF 35K DEGREES - U.N.O.
- ALL HALOGEN (MR16) LAMPS SHALL HAVE ALUMINIZED BACK REFLECTOR.
- PROVIDE DIMMING BALLASTS FOR LIGHT FIXTURES AS NOTED PER PLAN AND SCHEDULE
- ALL DIMMING BALLASTS SHALL BE 0-10 VOLT FOR DIMMING FIXTURES
- ALL BALLASTS SHALL BE "PROGRAMMED RAPID START" AND GREEN TIP/ ENERGY STAR BALLASTS - GC TO SUBMIT FOR REVIEW.

KEY NOTES

- NO NEW WORK IN THIS AREA.
- PATCH AND REPAIR EXISTING CEILING TILE AND GRID AS REQUIRED FROM DEMOLITION.

LIGHT FIXTURE SCHEDULE

TYPE	DESCRIPTION	MANUFACTURER	MFR/MODEL NO.	TRIM/ REFL. FINISH	LAMP		REMARKS
					WATTS	QTY/TYPE	
F1	RECESSED 2X4 LAY-IN DIRECT / INDIRECT	T.B.C.	MATCH BASE BUILDING STANDARDS	WHITE/ LOW IRRIDESCENT			-
F2	RECESSED 6" APERTURE DOWNLIGHT	T.B.C.	MATCH BASE BUILDING STANDARDS	WHITE/ LOW IRRIDESCENT			-
F3	RECESSED 6" WALL WASHER	T.B.C.	MATCH BASE BUILDING STANDARDS	WHITE			-
F4	6" LAY-IN LINEAR DIRECT/ INDIRECT	T.B.C.		WHITE			WITH FROSTED ACRYLIC LENS
F5	UNDERCABINET TASK LIGHT	T.B.C.		WHITE	-		

1. ISSUED FOR LANDLORD REVIEW 05.11.2012

Issue Description Date

IA INTERIOR ARCHITECTS
NEW YORK

257 PARK AVENUE SOUTH, SUITE 800
NEW YORK, NEW YORK 10010
TEL 212-682-6909 FAX 212-867-8852

© 2011 INTERIOR ARCHITECTS, P.C., A NEW YORK PROFESSIONAL SERVICES CORPORATION. ALL DRAWINGS AND WRITTEN MATERIAL HEREIN CONSTITUTE THE ORIGINAL AND UNPUBLISHED WORK OF THE ARCHITECT, AND THE SAME MAY NOT BE DUPLICATED, USED, OR DISCLOSED WITHOUT THE WRITTEN CONSENT OF THE ARCHITECT.

4456 AMBOY RD.
STATEN ISLAND, NY 10312
1ST FLOOR

1ST FLOOR
REFLECTED
CEILING PLAN

Seal & Signature: Date: 05.11.2012
Scale: 1/8" = 1'-0"
Project No: 042355.02
Drawn By: KM & NC
Checked By: TB
Sheet No:

A-300.00