

FOR LEASE  
**±4.12 ACRES**



# DEVELOPMENT AVENUE & EARTHMOVER COURT

**BAKERSFIELD, CA**



# PROPERTY HIGHLIGHTS

- Easy access to/from Hwy 43, Hwy 58 West, and Interstate 5

Total Site Size: ±4.12 Acres

Zoning: M-2 PD, County of Kern

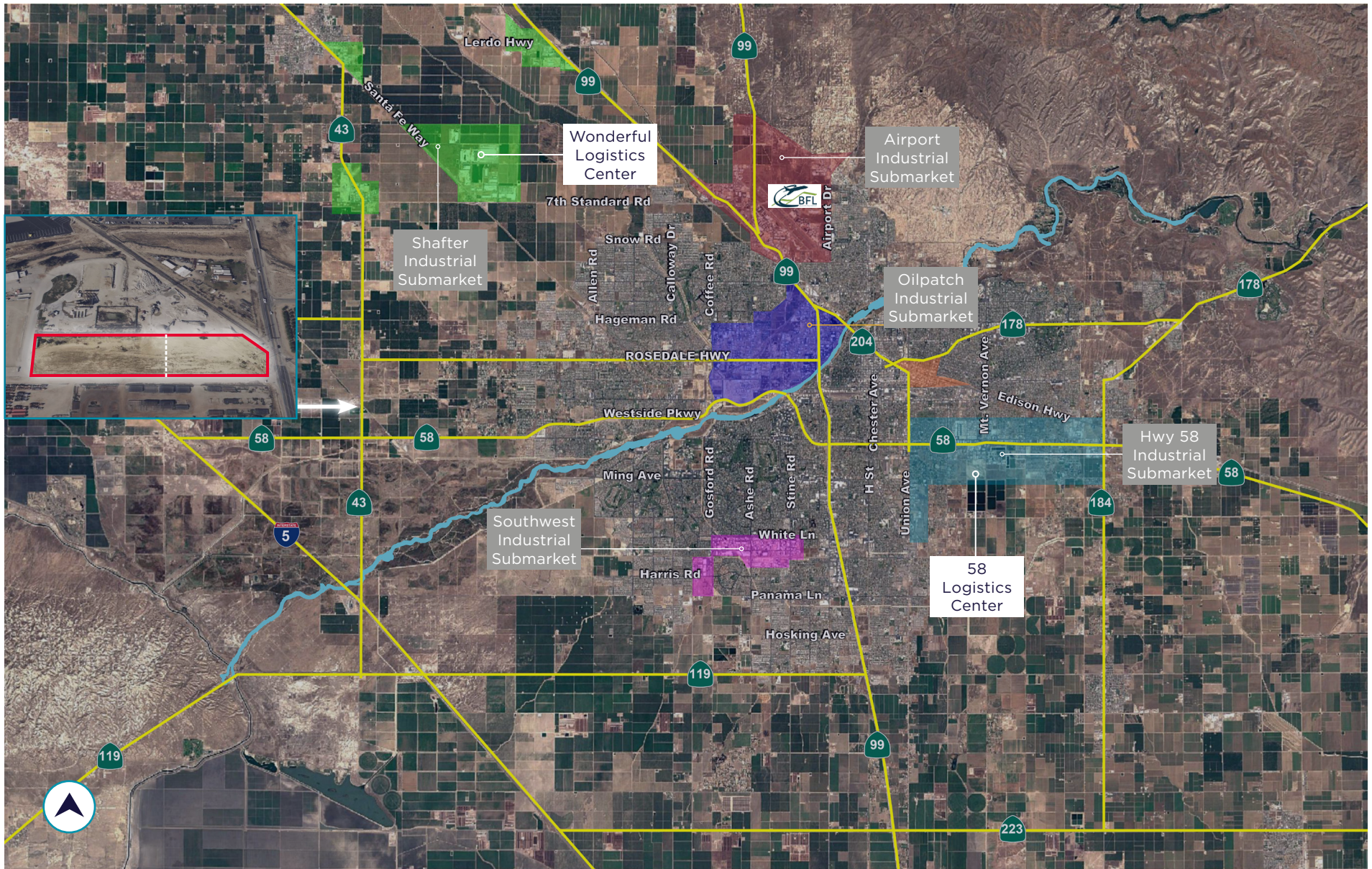
Asking Rate: **\$7,200 per month**

APNs:	104-420-25	104-420-26
	2.3 Acres	1.82 Acres

Asking Rate:	<b>\$4,000 per mo.</b>	<b>\$3,200 per mo.</b>
--------------	------------------------	------------------------

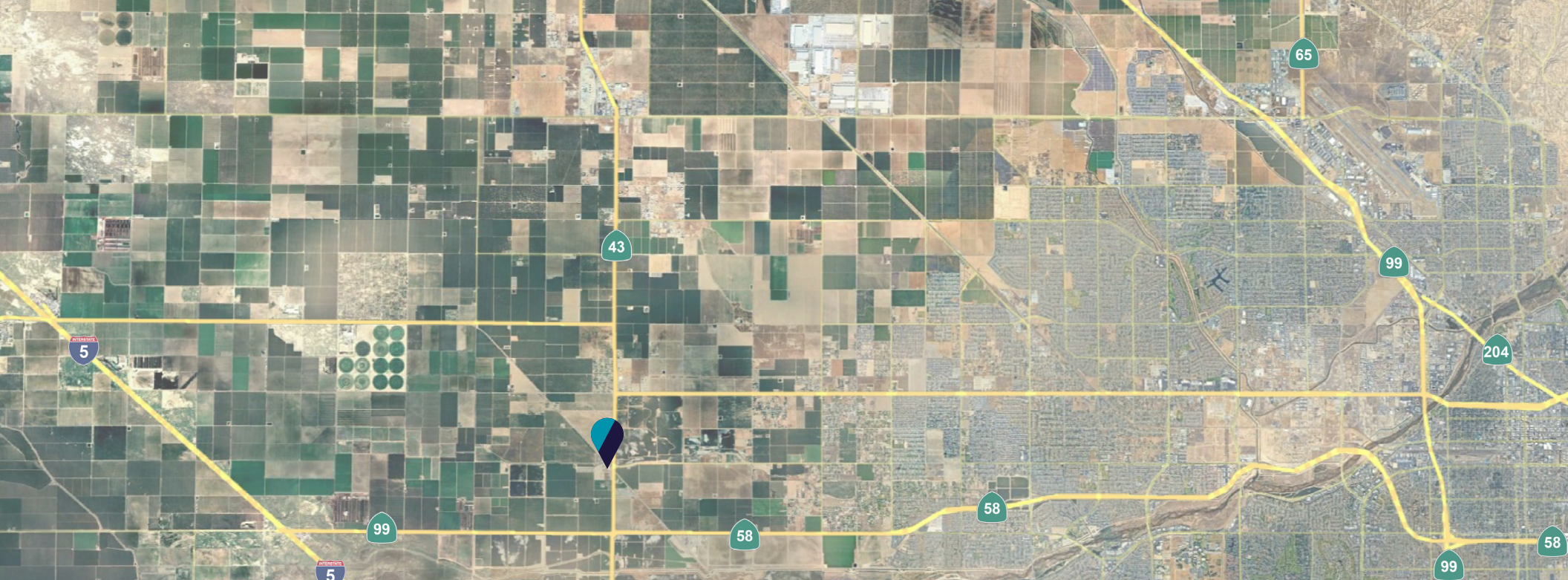






AERIAL  
**4.12 ACRES**





# CONTACT INFORMATION

## **WAYNE KRESS, SIOR**

Executive Director  
wayne.kress@cushwake.com  
+1 661 633 3819  
Lic. #00834680

## **COBY VANCE**

Senior Director  
coby.vance@cushwake.com  
+1 661 633 3807  
Lic. #00834680

## **SCOTT REYNOLDS**

Director  
scott.reynolds@cushwake.com  
+1 661 633 3825  
Lic. #01382493

5060 California Avenue  
Suite 1000  
Bakersfield, CA 93309  
+1 661 327 2263  
Lic. #01880493  
cushmanwakefield.com



©2025 Cushman & Wakefield. All rights reserved. The information contained in this communication is strictly confidential. This information has been obtained from sources believed to be reliable but has not been verified. NO WARRANTY OR REPRESENTATION, EXPRESS OR IMPLIED, IS MADE AS TO THE CONDITION OF THE PROPERTY (OR PROPERTIES) REFERENCED HEREIN OR AS TO THE ACCURACY OR COMPLETENESS OF THE INFORMATION CONTAINED HEREIN, AND SAME IS SUBMITTED SUBJECT TO ERRORS, OMISSIONS, CHANGE OF PRICE, RENTAL OR OTHER CONDITIONS, WITHDRAWAL WITHOUT NOTICE, AND TO ANY SPECIAL LISTING CONDITIONS IMPOSED BY THE PROPERTY OWNER(S). ANY PROJECTIONS, OPINIONS OR ESTIMATES ARE SUBJECT TO UNCERTAINTY AND DO NOT SIGNIFY CURRENT OR FUTURE PROPERTY PERFORMANCE.