



2501 ORTHODOX STREET | PHILADELPHIA, PA 19137

# 0.37-Acre Automotive or Light Industrial Opportunity

**FOR SALE**

**Michael Barmash**

Senior Managing Director

+1 267 235 5306

[Michael.Barmash@colliers.com](mailto:Michael.Barmash@colliers.com)

**Andrew Weinstein**

Associate

+1 215 928 7557

[Andrew.Weinstein@colliers.com](mailto:Andrew.Weinstein@colliers.com)



# Property Overview



Address:	2501 Orthodox Street, Philadelphia, PA 19137	Frontage:	111' on Orthodox St
Zoning:	ICMX	Tax ID:	882971420
Building Area:	8,280 SF	Taxes:	\$20,063 (2025)
Site Area:	16,218 SF	Drive-In Doors:	4
		Parking:	Lot Available

## Key Highlights



8,280 SF one-story property positioned off Aramingo Avenue



Large parking area approx. 8,000 SF



Four (4) garage/ drive-in doors and fenced lot



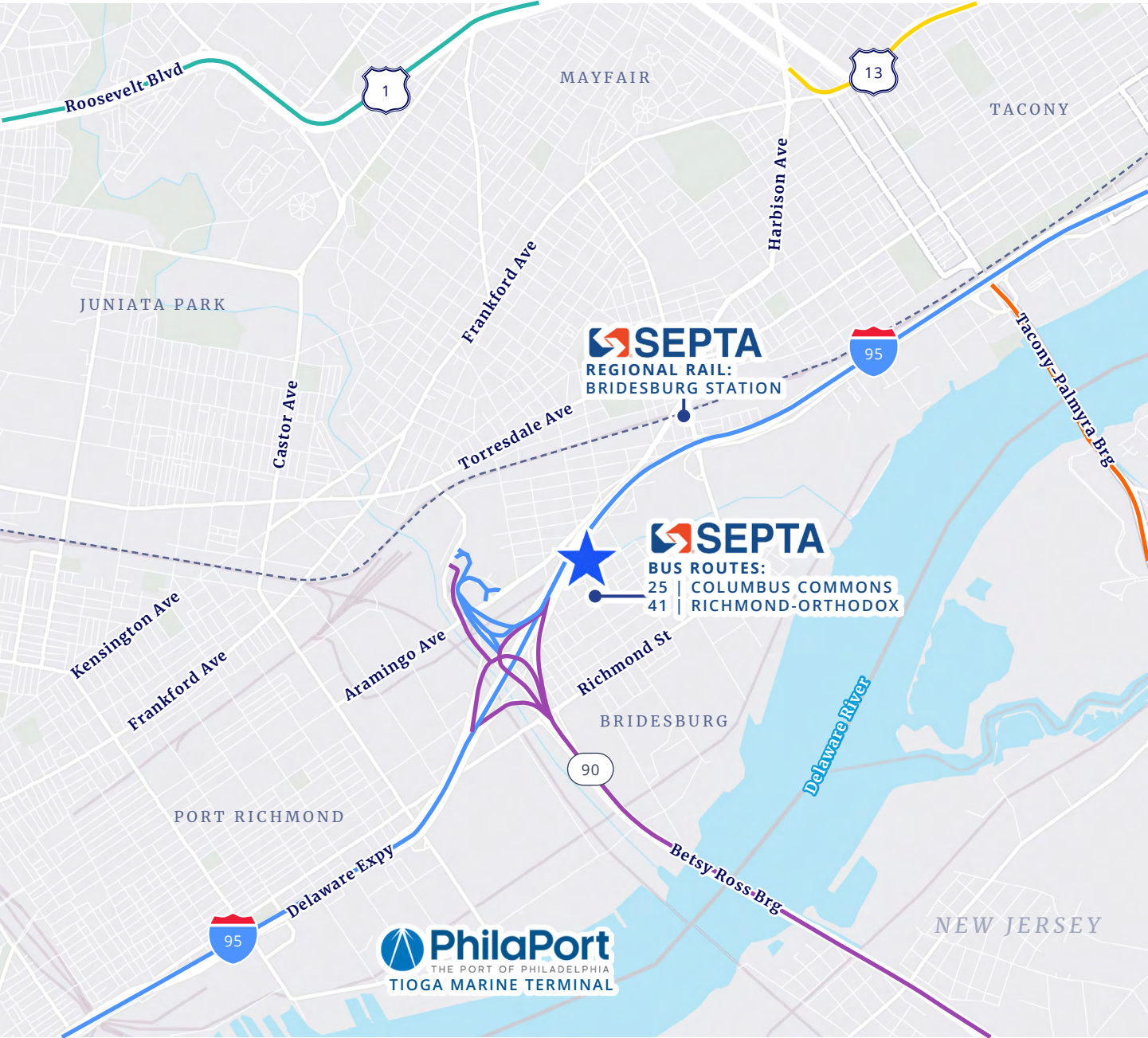
Residential and commercial community



Minutes to I-95, I-676, Route 1, the Betsy Ross Bridge and PhilaPort



# Prime Regional Access



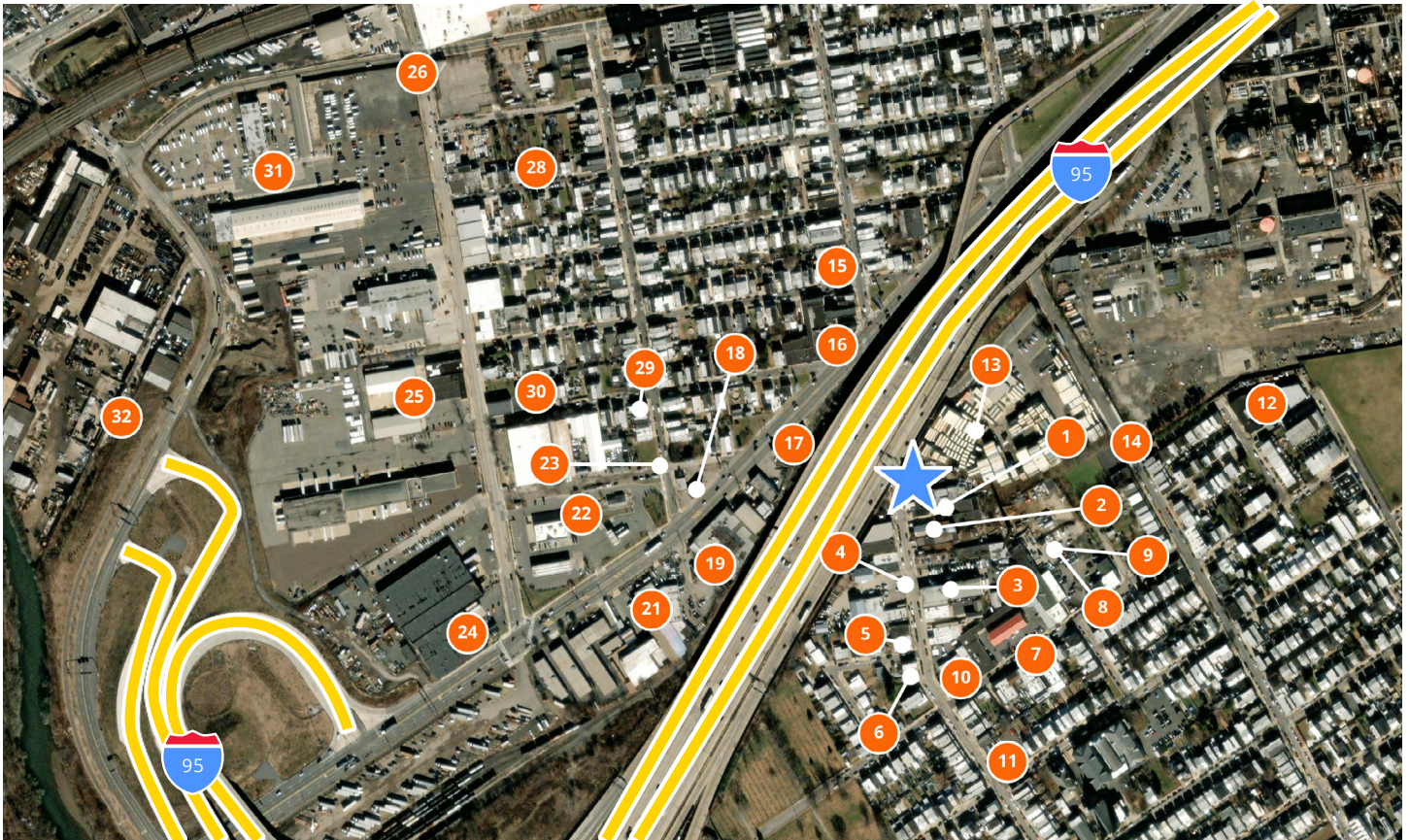
## TRAVEL DISTANCES

I-95/Delaware Expy	1.0 mi   4 mins
Betsy Ross Bridge	2.4 mi   8 mins
Tacony-Palmyra Bridge	3 mi   9 mins
PhilaPort	2.2 mi   7 mins
Route 1	3 mi   10 mins

Route 13	2.5 mi   10 mins
I-676/Vine St Expy	7 mi   15 mins
I-76	8.5 mi   20 mins
Northeast PHL Airport	8 mi   16 mins
Benjamin Franklin Bridge	6.6 mi   15 mins



# Local Occupiers



1	Frankford Plating Inc
2	P.I.M. Stone LLC
3	Boulevard Truck Repair
4	East Coast Awning
5	Aqua Plumbing & Heating LLC
6	Inspired Flooring LLC
7	Beka's Food Service At Polonia Hall
8	Driven Auto Styling
9	Blue Galaxy Marble & Granite
10	Historical Documents Co
11	Stay Fly Muay Thai
12	Frank iron works inc
13	WillScot
14	AdvanSix
15	Print Natural
16	Stitch Kings, LLC.

17	Aramingo Carpet and Flooring
18	East Coast Gas Station
19	ABC Supply Co. Inc.
20	Auto-Maxx Inc
21	Philadelphia Taxicab Service
22	Tesla Supercharger
23	Royal Farms & Car Wash
24	NBP Windows & Doors
25	Philadelphia Mobile Truck Repair
26	Linde Welding Gas & Equipment Center
27	First Transit Inc
28	Miles Towing Service
29	Pa truck wash llc
30	Pace Roofing LLC
31	Total Transit Corp.
32	C&T Truck Mechanic

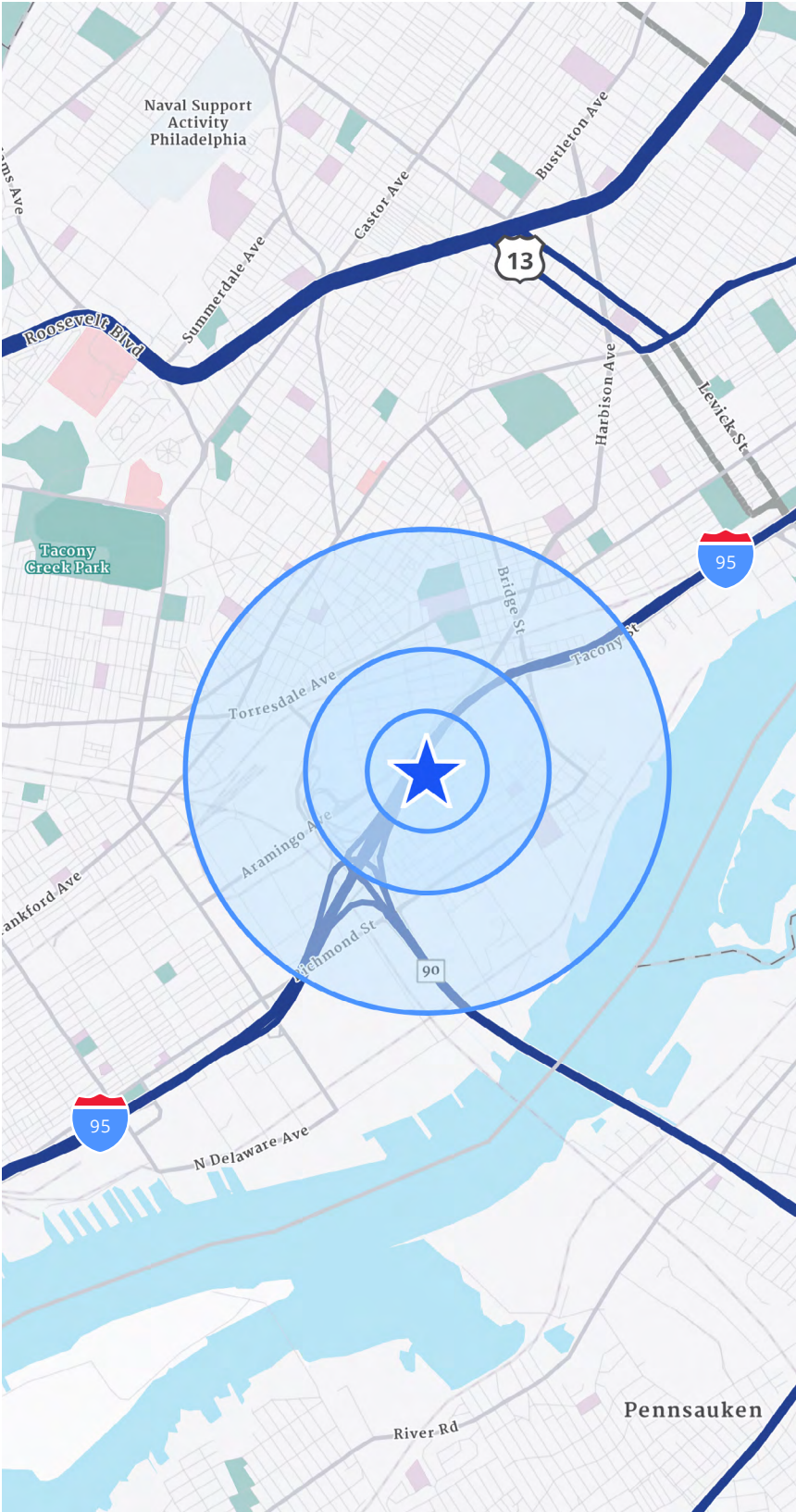


# Local Snapshot





# Demographic Overview



## 1/4 MILE

	POPULATION 1,508		EMPLOYEES 435
	HOUSEHOLDS 600		AVG. HHI \$85,336

## 1/2 MILE

	POPULATION 7,620		EMPLOYEES 2,530
	HOUSEHOLDS 2,953		AVG. HHI \$94,144

## 1 MILE

	POPULATION 21,962		EMPLOYEES 9,758
	HOUSEHOLDS 8,060		AVG. HHI \$66,613

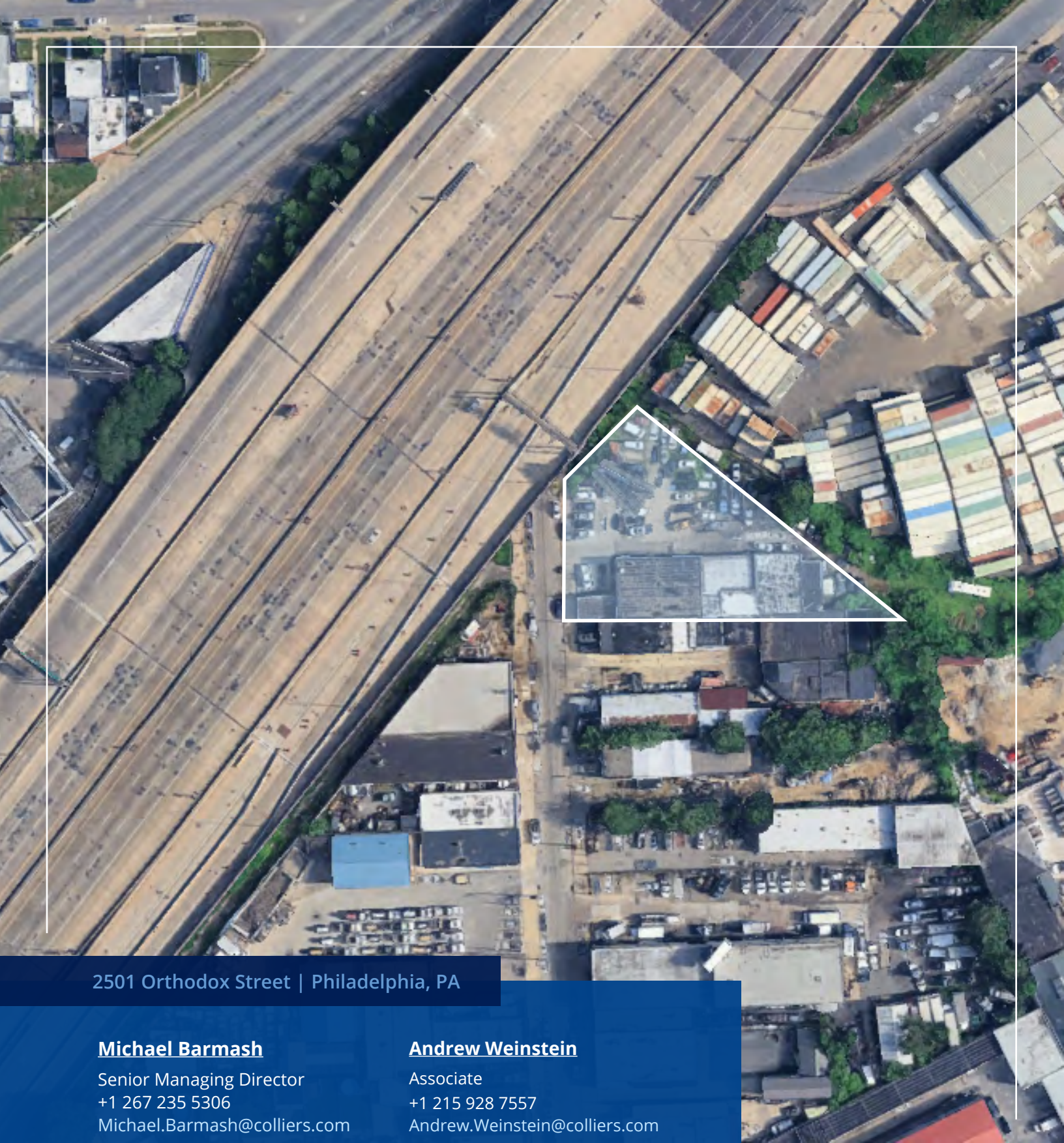
## TRAFFIC VOLUME



18,290 AADT

Aramingo Ave & Orthodox St  
(2025)





2501 Orthodox Street | Philadelphia, PA

**Michael Barmash**

Senior Managing Director  
+1 267 235 5306  
Michael.Barmash@colliers.com

**Andrew Weinstein**

Associate  
+1 215 928 7557  
Andrew.Weinstein@colliers.com

This document has been prepared by Colliers for advertising and general information only. Colliers makes no guarantees, representations or warranties of any kind, expressed or implied, regarding the information including, but not limited to, warranties of content, accuracy and reliability. Any interested party should undertake their own inquiries as to the accuracy of the information. Colliers excludes unequivocally all inferred or implied terms, conditions and warranties arising out of this document and excludes all liability for loss and damages arising there from. This publication is the copyrighted property of Colliers and/or its licensor(s). Copyright © 2025. All rights reserved. This communication is not intended to cause or induce breach of an existing listing agreement. Greater Philadelphia Region.