

# For Sublease

**NAIDESCO**

**1482 W Lark Industrial Dr**  
Fenton, MO 63026



## Property Highlights



**For Sublease**  
3,215 SF



**Industrial Office /**  
**Warehouse Space**



**Sublease Term Through**  
**01/31/2028**



**Lease Rate:**  
**\$3,376 / MO, Gross**

For more information, please contact:



**Meghan Donovan**

d (314) 994 - 2320

c (314) 810 - 9213

[mdonovan@naidesco.com](mailto:mdonovan@naidesco.com)

**NAIDESCO**

8112 Maryland Ave, Suite 300


St. Louis, MO 63105

(314) 994 - 4800

[naidesco.com](http://naidesco.com)

## Property Features

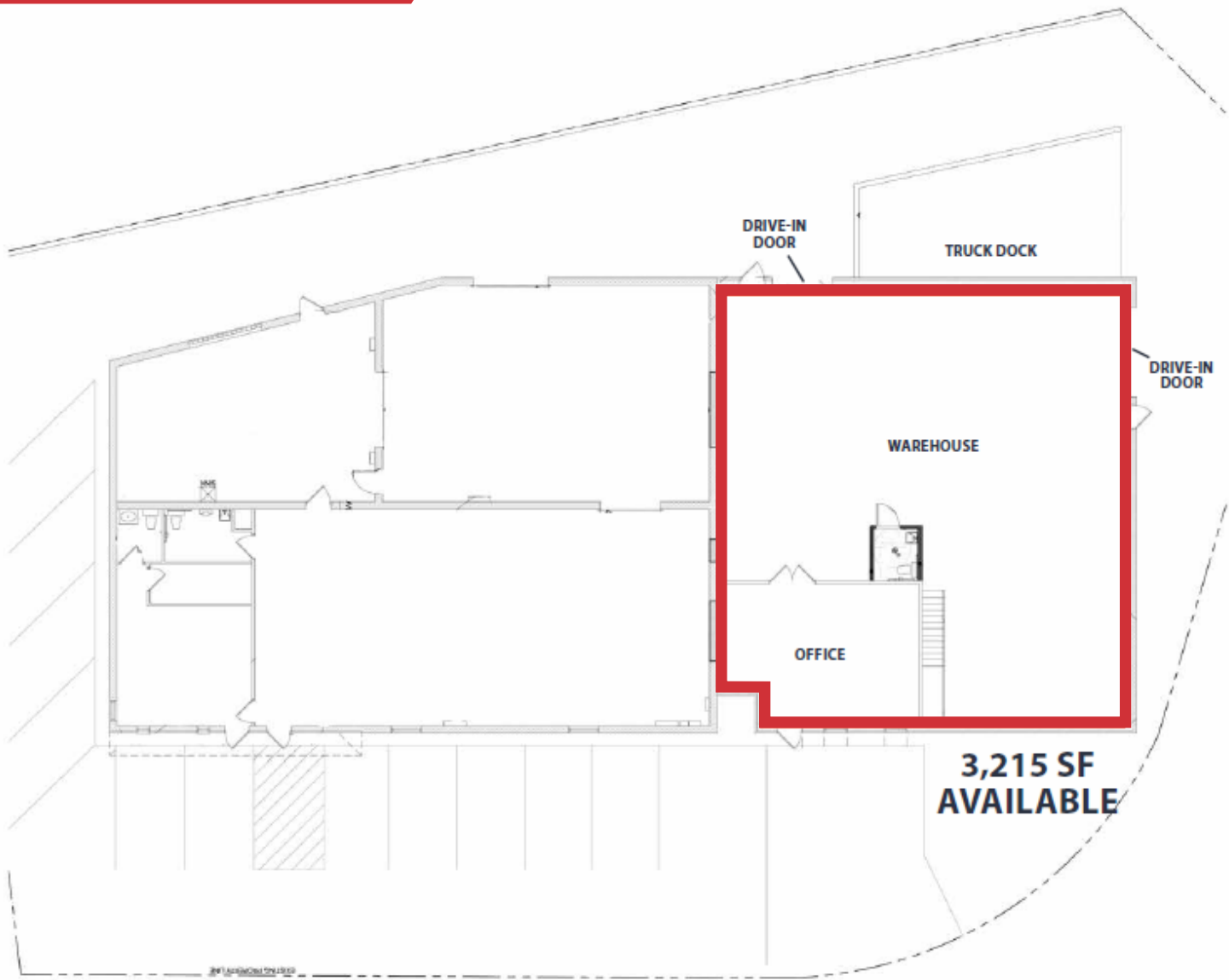
- 3,215 SF industrial space available for sublease
- Includes 260 SF office finish
- Two drive-in doors and one shared dock
- Sublease term through January 31, 2028

 **Lease Rate: \$3,376 / MO, Gross**





Floor Plan



W LARK INDUSTRIAL DR







**Meghan Donovan**

d (314) 994 - 2320

c (314) 810 - 9213

mdonovan@naidesco.com

# NAIDESCO

8112 Maryland Ave, Suite 300

St. Louis, MO 63105

(314) 994 - 4800

**naidesco.com**

No warranty or representation, express or implied, is made as to the accuracy of the information contained herein, and the same is submitted subject to errors, omissions, changes in price, rental, or other conditions, prior sale, lease, or financing, or withdrawal without notice, and any special listing conditions imposed by our principals. No warranties or representations are made as to the condition of the property or any hazards contained therein, nor are any to be implied.