

MEDICAL OFFICE SPACE FOR LEASE



SUMMIT MEDICAL BUILDING

100 Highland Avenue, Providence, RI 02906

LEEDS MITCHELL IV, SIOR
Principal Broker, Partner
401.751.3200 x3307
leeds@mgcommercial.com

MG COMMERCIAL
365 Eddy Street, Penthouse Suite
Providence, RI 02903
401.751.3200 | mgcommercial.com

PROPERTY SUMMARY



PROPERTY DESCRIPTION

The Summit Medical Building is a 27,180 SF, first class, multi-tenant medical facility with over 100+ onsite parking spaces and additional on-street parking available. The lease rate includes all utilities. Tenants are only responsible for their own interior janitorial.

PROPERTY HIGHLIGHTS

- First class medical office building
- Free on-site and street parking
- Walking distance to Miriam Hospital
- Owner has upgraded and refurbished building
- Architectural redesign of space available
- Elevator, Handicap Accessible

LOCATION DESCRIPTION

On the East Side of Providence, in the North Main section, close to Miriam Hospital; 1 block from North Main Street; ¾ mile from I-95, Exit 25.

OFFERING SUMMARY

Lease Rate:	\$25.00 SF/yr (Full Service; Gross)
Available SF:	1,034 - 1,941 SF
Building Size:	27,180 SF

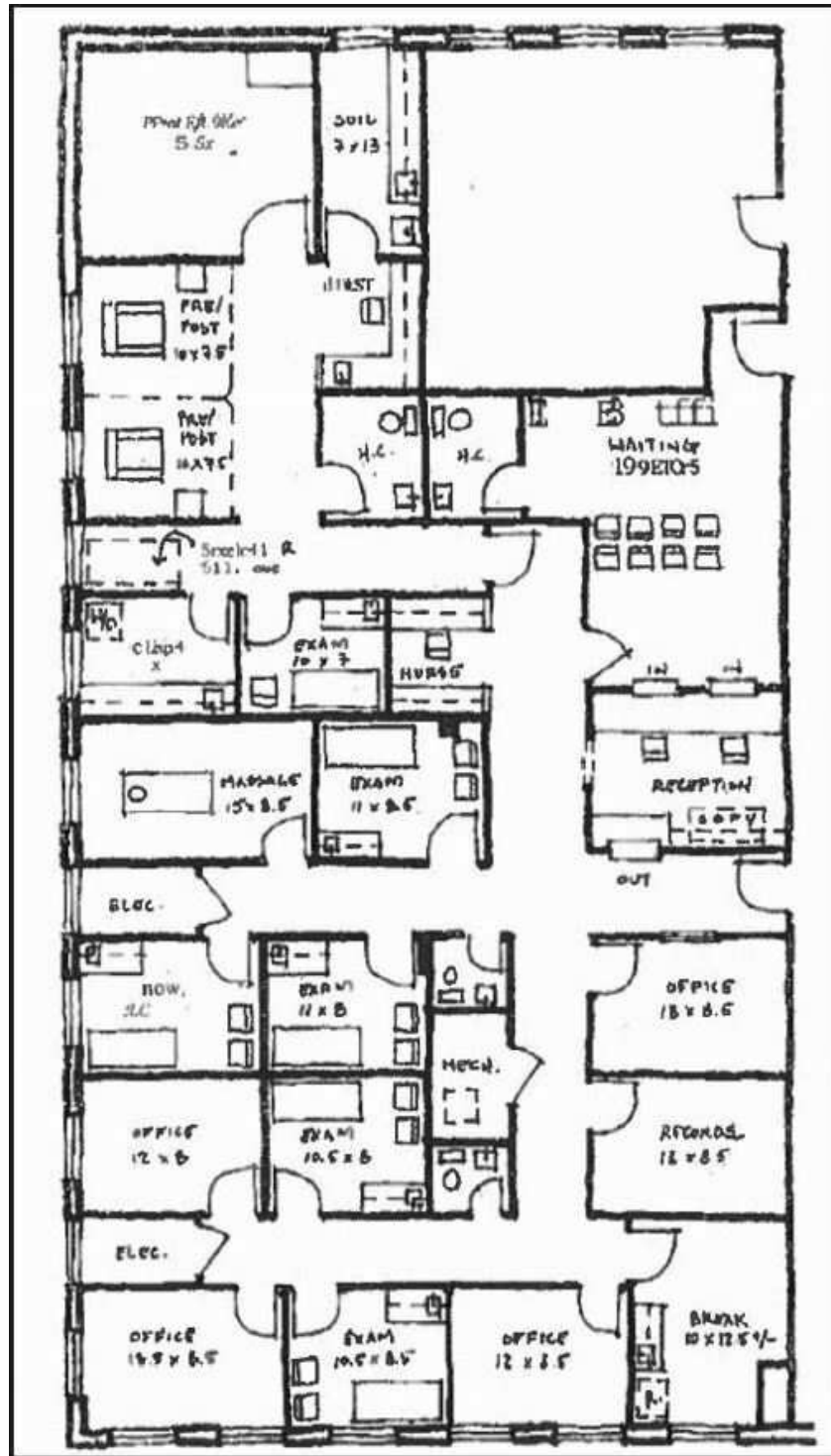
SPACES	LEASE RATE	SPACE SIZE
Suite 305-307	\$25.00 SF/yr	1,941 SF
309	\$25.00 SF/yr	1,034 SF

LEEDS MITCHELL IV, SIOR
Principal Broker, Partner
401.751.3200 x3307
leeds@mgcommercial.com

365 Eddy Street, Penthouse Suite
Providence, RI 02903
mgcommercial.com



ADDITIONAL PHOTOS

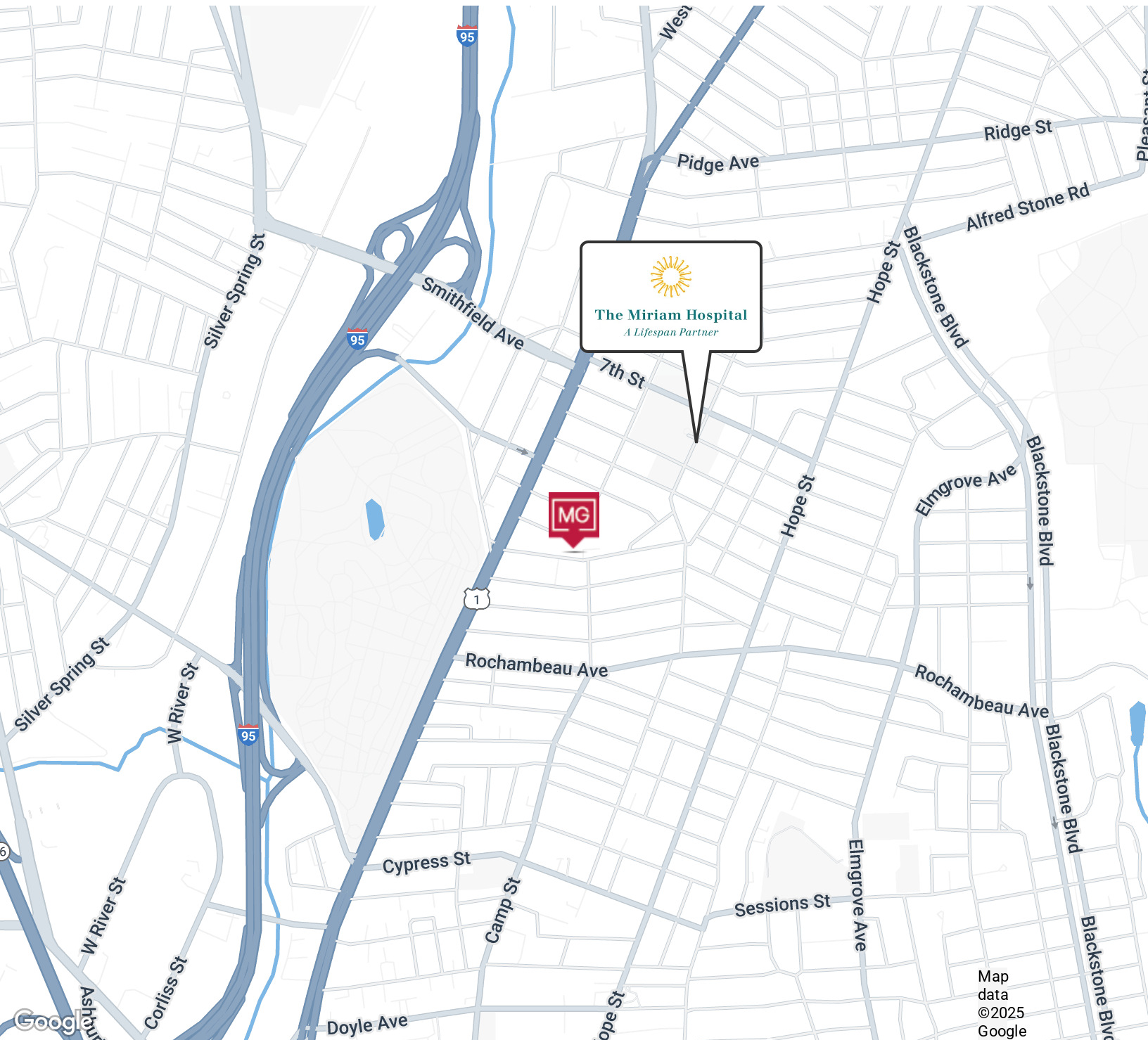


LEEDS MITCHELL IV, SIOR
Principal Broker, Partner
401.751.3200 x3307
leeds@mqcommercial.com

365 Eddy Street, Penthouse Suite
Providence, RI 02903
mqcommercial.com



RETAILER MAP



LEEDS MITCHELL IV, SIOR
Principal Broker, Partner
401.751.3200 x3307
leeds@mgcommercial.com

365 Eddy Street, Penthouse Suite
Providence, RI 02903
mgcommercial.com

