

Oxford Companies  
734.665.6500  
oxfordcompanies.com



Integrated  
Real Estate  
Services



## Office Property For Lease

Liberty Square

255 E. Liberty Street, Suite 281

Ann Arbor, MI 48104

5,965 SF

\$25.00 SF/yr (MG)

Available



Contact Karen O'Neil for  
more information or to  
schedule a tour.

Office: 734.665.6500  
Cell: 734.323.4263  
koneil@oxfordcompanies.com

Liberty Square  
255 E. Liberty Street - Suite 281  
Ann Arbor, MI 48104



Integrated  
Real Estate  
Services



### OFFERING SUMMARY

Lease Rate:	\$25.00 SF/yr (MG)
Building Size:	24,319 SF
Available SF:	5,965 SF
Lot Size:	0.35 Acres
Zoning:	D1
Year Built:	1920
Submarket:	Downtown Ann Arbor

### PROPERTY OVERVIEW

Liberty Plaza is a fantastic location for businesses looking to relocate to downtown Ann Arbor. Lower level retail and second-story office spaces in this building are perfect for organizations that want high visibility and a steady stream of passersby. Liberty Plaza's brick exterior and abundance of tall windows give an air of charm and uniqueness. Because of its downtown Ann Arbor location, Liberty Plaza seamlessly connects you to the pulse of the area's world-class bars and restaurants.

### PROPERTY HIGHLIGHTS

- Located in central downtown Ann Arbor, steps from the University of Michigan campus
- Highly trafficked street and sidewalk offers great exposure
- Upper level office space with fantastic views
- Lower level retail space with high visibility signage and accessibility
- Onsite parking available
- Easy access to I-94, US-23, and M-14
- Neighbored by popular restaurants and retail shops
- Underground and above-ground parking structures one block away
- Streamlined leasing experience for convenience and ease
- Professionally managed with 24/7 on-call emergency maintenance



Contact Karen O'Neil for more information or to schedule a tour.

Office: 734.665.6500  
Cell: 734.323.4263  
koneil@oxfordcompanies.com

Liberty Square  
255 E. Liberty Street - Suite 281  
Ann Arbor, MI 48104



Integrated  
Real Estate  
Services



Contact Karen O'Neil for  
more information or to  
schedule a tour.

Office: 734.665.6500  
Cell: 734.323.4263  
[koneil@oxfordcompanies.com](mailto:koneil@oxfordcompanies.com)

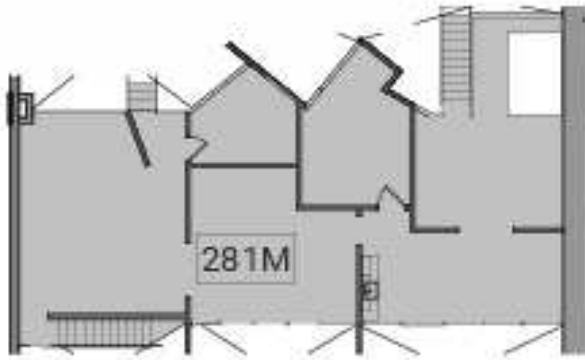
Liberty Square

255 E. Liberty Street - Suite 281

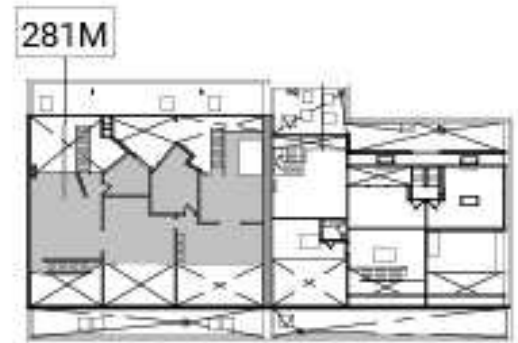
Ann Arbor, MI 48104



Integrated  
Real Estate  
Services



**4** Suite 281M - Partial Mezzanine Existing Floor Plan  
N  
281  
10'-6" 21'-4" 3,64" = 1"0"



**3** Key Plan - Mezzanine Level  
N  
281  
50 100 1" = 50'-0"



**2** Suite 281 - Partial Level 02 Existing Floor Plan  
N  
281  
10'-6" 21'-4" 3,64" = 1"0"



**1** Key Plan - Level 02  
N  
281  
50 100 1" = 50'-0"



Contact Karen O'Neil for more information or to schedule a tour.

Office: 734.665.6500  
Cell: 734.323.4263  
koneil@oxfordcompanies.com

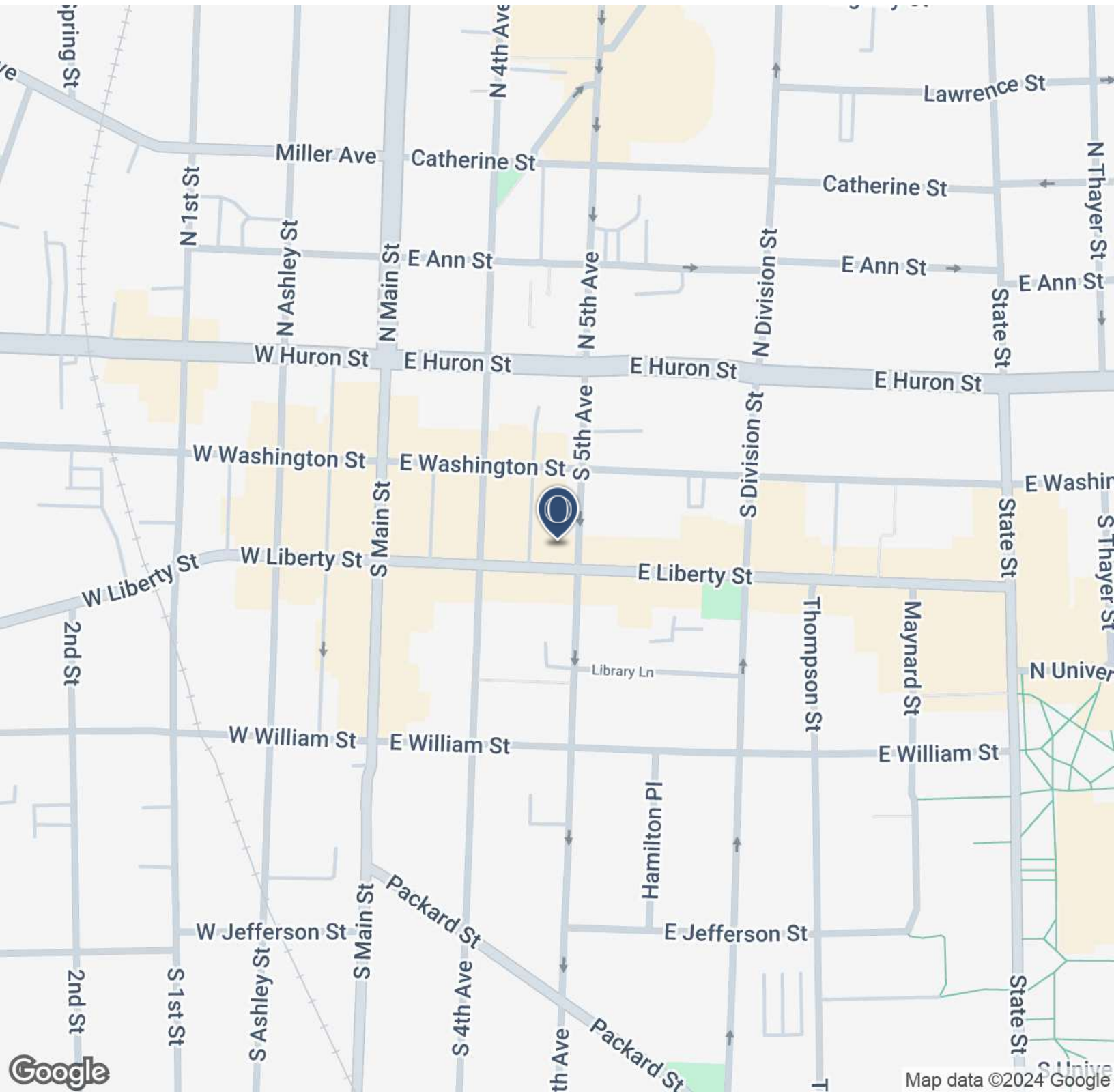
Liberty Square

255 E. Liberty Street - Suite 281

Ann Arbor, MI 48104



Integrated  
Real Estate  
Services



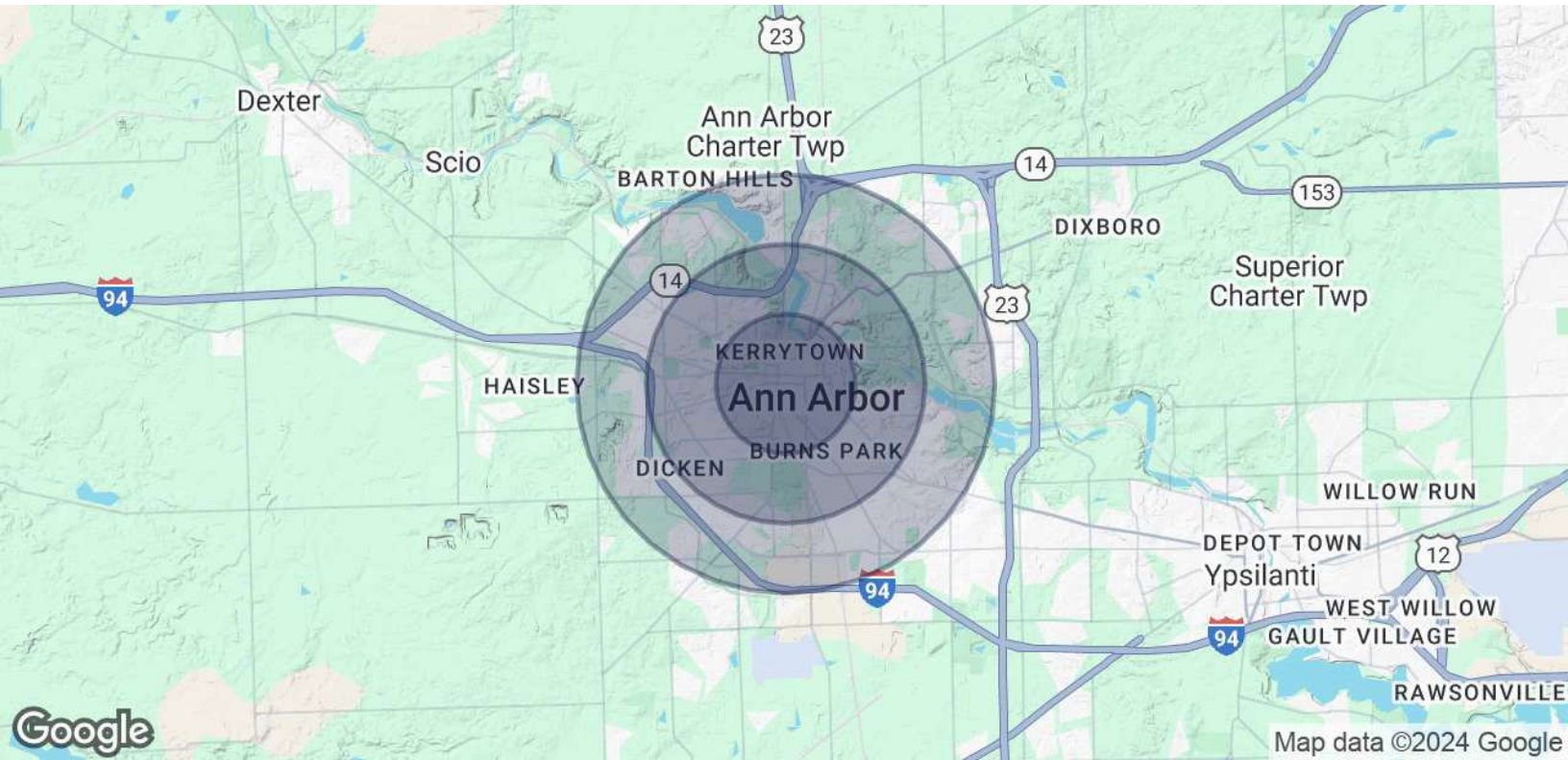
Contact Karen O'Neil for  
more information or to  
schedule a tour.

Office: 734.665.6500  
Cell: 734.323.4263  
koneil@oxfordcompanies.com

Liberty Square  
 255 E. Liberty Street - Suite 281  
 Ann Arbor, MI 48104



Integrated  
 Real Estate  
 Services



POPULATION	1 MILE	2 MILES	3 MILES
Total Population	27,704	73,511	115,567
Average age	24.8	28.2	30.8
Average age (Male)	24.9	27.9	30.2
Average age (Female)	24.7	28.5	31.2
HOUSEHOLDS & INCOME	1 MILE	2 MILES	3 MILES
Total households	10,000	25,827	43,256
# of persons per HH	2.8	2.8	2.7
Average HH income	\$48,285	\$67,205	\$73,686
Average house value	\$314,817	\$318,903	\$323,361

\* Demographic data derived from 2020 ACS - US Census



Contact Karen O'Neil for more information or to schedule a tour.

Office: 734.665.6500  
 Cell: 734.323.4263  
 koneil@oxfordcompanies.com