

FOR SUBLEASE

SUITE 100 - 29,191 RSF



Innovation
Commercial



BIOPoint

20 TW Alexander Drive Suite 100, Research Triangle Park, NC 27709

Building Description

Located at 20 TW Alexander Dr in Research Triangle Park, NC, this flex facility offers 148,989 square feet across three floors. Ideally suited for a combination of office, lab, or light industrial use, the property provides versatility for businesses requiring adaptable space in one of the nation's premier research and development hubs.



Excellent access to major highways and proximity to universities and tech centers.



On-site fitness center, conference center and common workstations spaces for tenant use.

Rental Rate

NEGOTIABLE

Master Lease Expiration Date

NOV. 30, 2034



Suite Description



Available Immediately. Move-In ready with overhead services panels



FF&E available and included
Rental rate negotiable



Purpose-Built Lab Space: ISO5/ISO6 cleanrooms, QC/Clean Pack, R&D, and Gowning Areas.



Fully Equipped: ESD flooring, epoxy, finishes, Armstrong ceilings, and lab utility connections (power, CDA, N2, VAC)



First floor access, storage/receiving, airlocks and basement mechanical/support space.



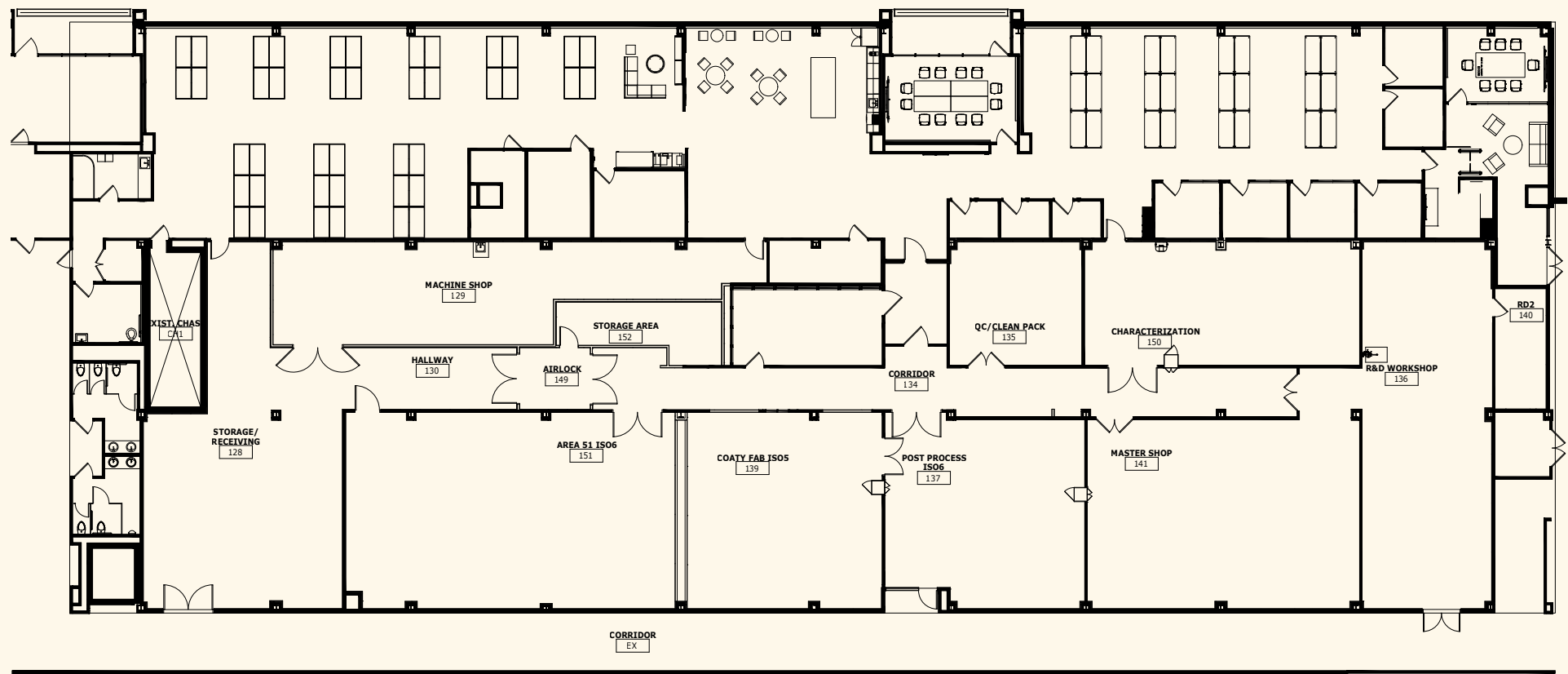
Photos



Photos



Floor Plan



Location Map





FOR MORE INFORMATION, CONTACT:

DAVID FLEMING

Founding Partner

david.fleming@innovationcommercial.com

SAM CRONIN

Founding Partner

sam.cronin@innovationcommercial.com

THOMAS WILLIAMSON

Advisor

thomas.williamson@innovationcommercial.com



Innovation
Commercial