

# FOR LEASE

- **NEW ownership**
- **FREE surface parking**
- **Future Purple Line stop**
- **Short walk to metro**
- **Covered reserved parking also available**
- **Deli on-site**
- **Superb access to I-495 via Georgia Avenue and Colesville Road**
- **Operable windows**



**THE GROVE**

WELLNESS & PROFESSIONAL PLAZA



**8555 16<sup>th</sup> Street**  
**Silver Spring, MD 20910**

<u>Suite #</u>	<u>Size</u>	<u>Contiguous</u>
202	1,227 RSF	
240	1,775 RSF	
300	5,120 RSF	
402	1,797 RSF	
601	4,592 RSF	
800	2,064 RSF	} 4,810 RSF
850	2,746 RSF	

For more details or to arrange a tour please contact:

**301-961-9696**

William K. Montrose  
Ext. 203

[wmontrose@amrcommercial.com](mailto:wmontrose@amrcommercial.com)

Gillin Smith  
Ext. 209

[gsmith@amrcommercial.com](mailto:gsmith@amrcommercial.com)



Although all information furnished is from sources we deem reliable, such information has not been verified and no express representation is made nor is any to be implied as to the accuracy thereof, and it is submitted subject to errors, omissions, or other conditions.



ALEXANDER, MONTROSE, RITTENBERG  
Commercial Real Estate Brokerage  
Est. 1994

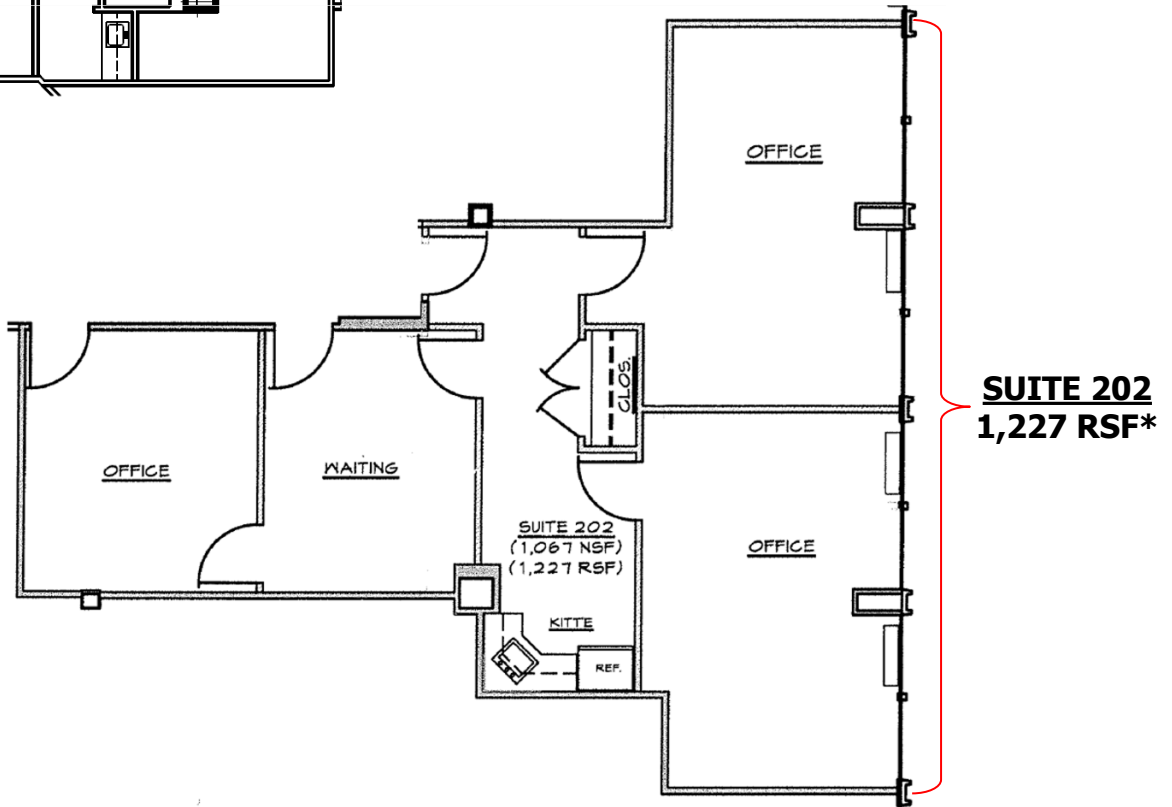
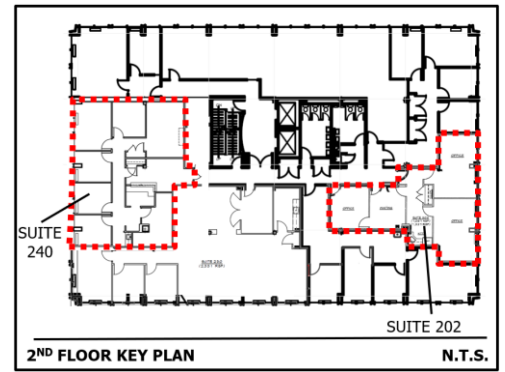
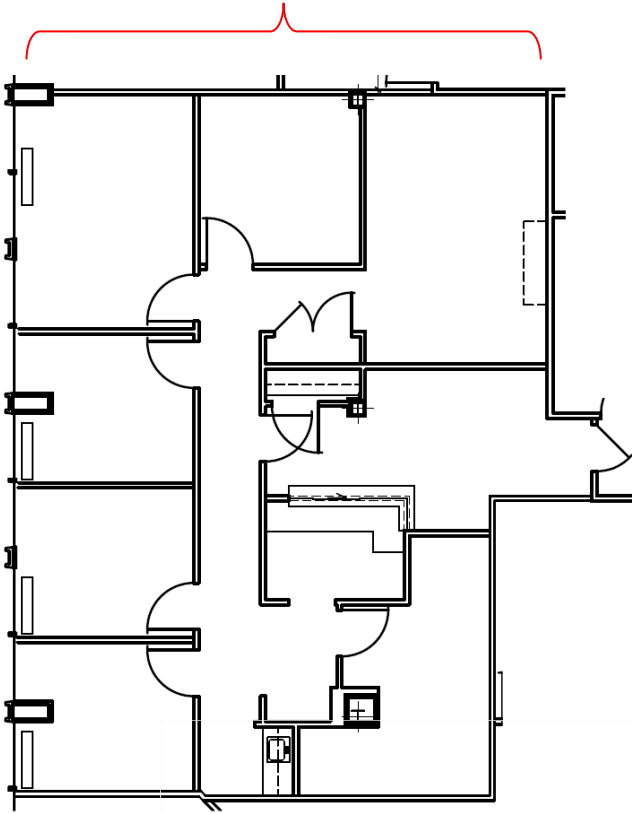
*Celebrating*  
**31**  
*Years*  
1994-2025



Energy Star Certified



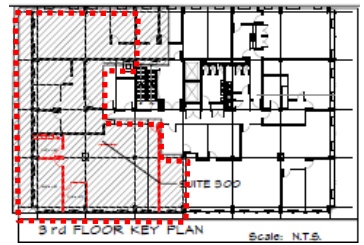
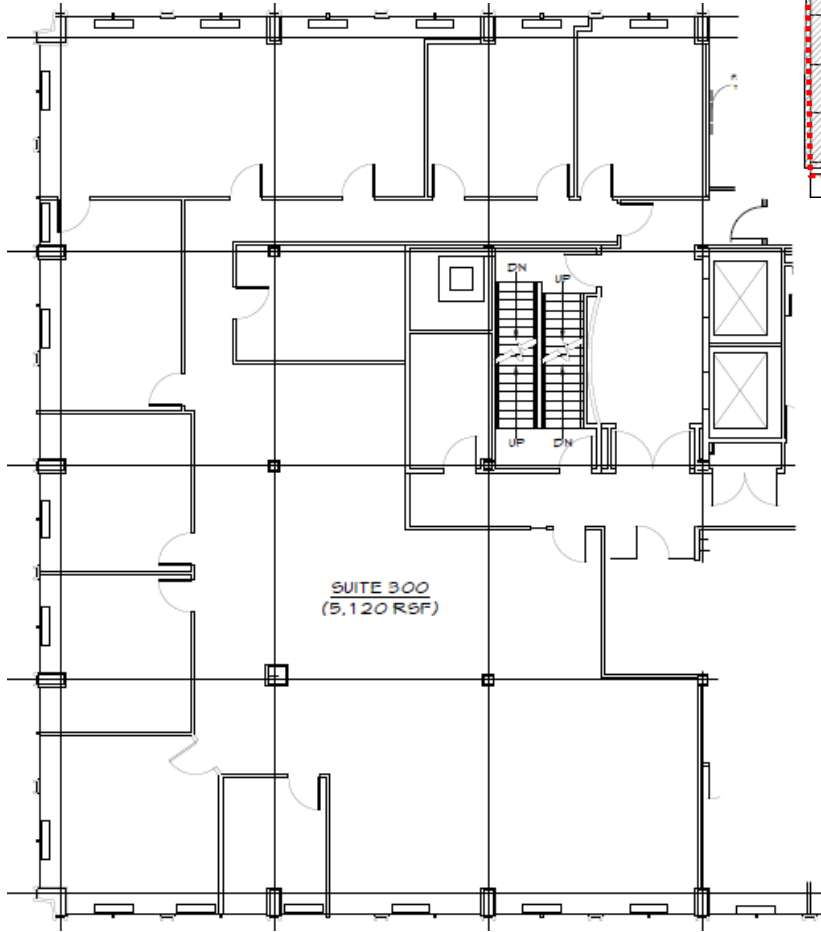
**SUITE 240**  
1,775 RSF\*



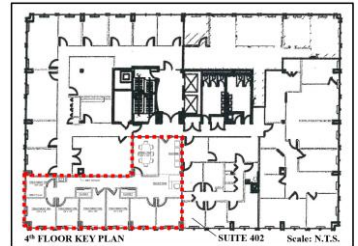
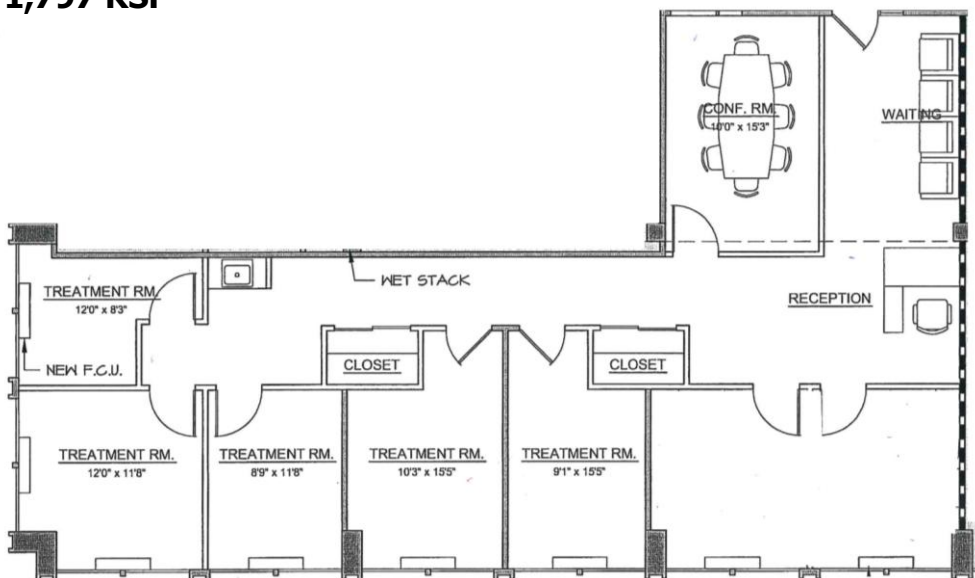
NOT TO SCALE | MEASUREMENTS APPROXIMATE

Although all information furnished is from sources we deem reliable, such information has not been verified and no express representation is made, nor is any to be implied, as to the accuracy thereof, and it is submitted subject to errors, omissions, changes of price/rental or other conditions prior to sale or lease, and subject to withdrawal without notice.

## SUITE 300 5,120 RSF



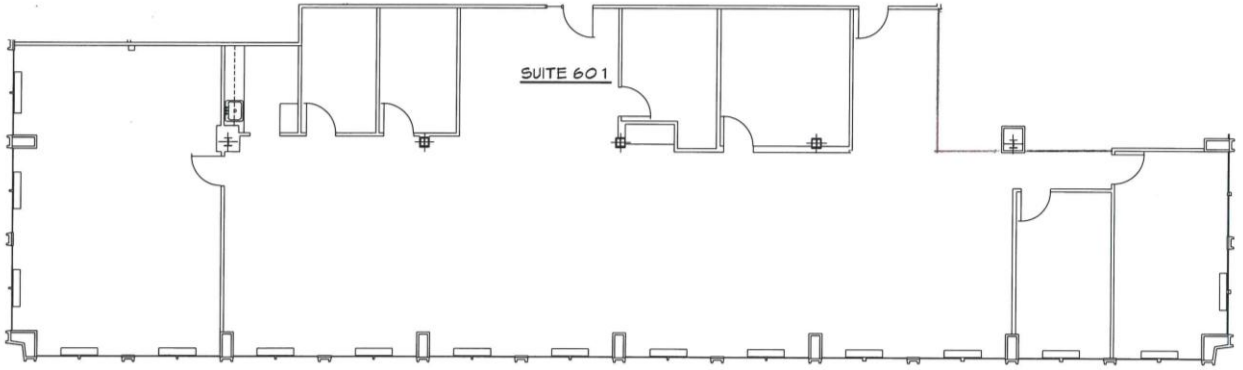
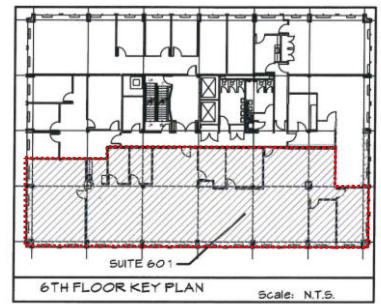
## SUITE 402 1,797 RSF



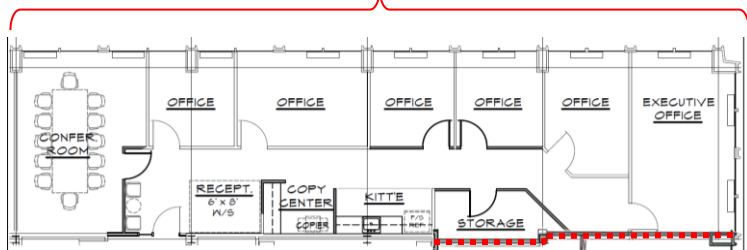
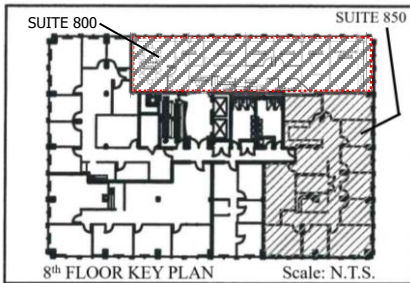
NOT TO SCALE | MEASUREMENTS APPROXIMATE

Although all information furnished is from sources we deem reliable, such information has not been verified and no express representation is made, nor is any to be implied, as to the accuracy thereof, and it is submitted subject to errors, omissions, changes of price/rental or other conditions prior to sale or lease, and subject to withdrawal without notice.

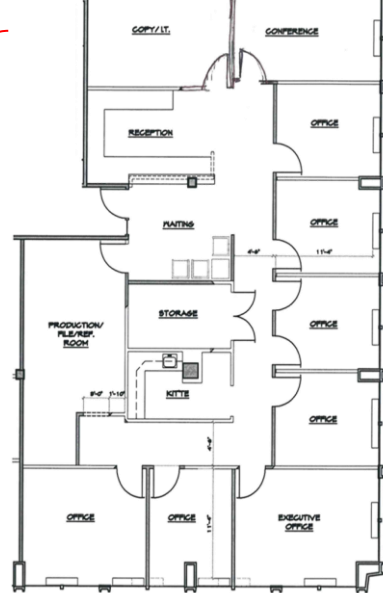
**SUITE 601**  
**4,592 RSF**



**SUITE 800**  
**2,064 RSF\***



**SUITE 850**  
**2,746 RSF\***



**\*Suites may be combined for up to 4,810 RSF**

NOT TO SCALE | MEASUREMENTS APPROXIMATE

Although all information furnished is from sources we deem reliable, such information has not been verified and no express representation is made, nor is any to be implied, as to the accuracy thereof, and it is submitted subject to errors, omissions, changes of price/rental or other conditions prior to sale or lease, and subject to withdrawal without notice.