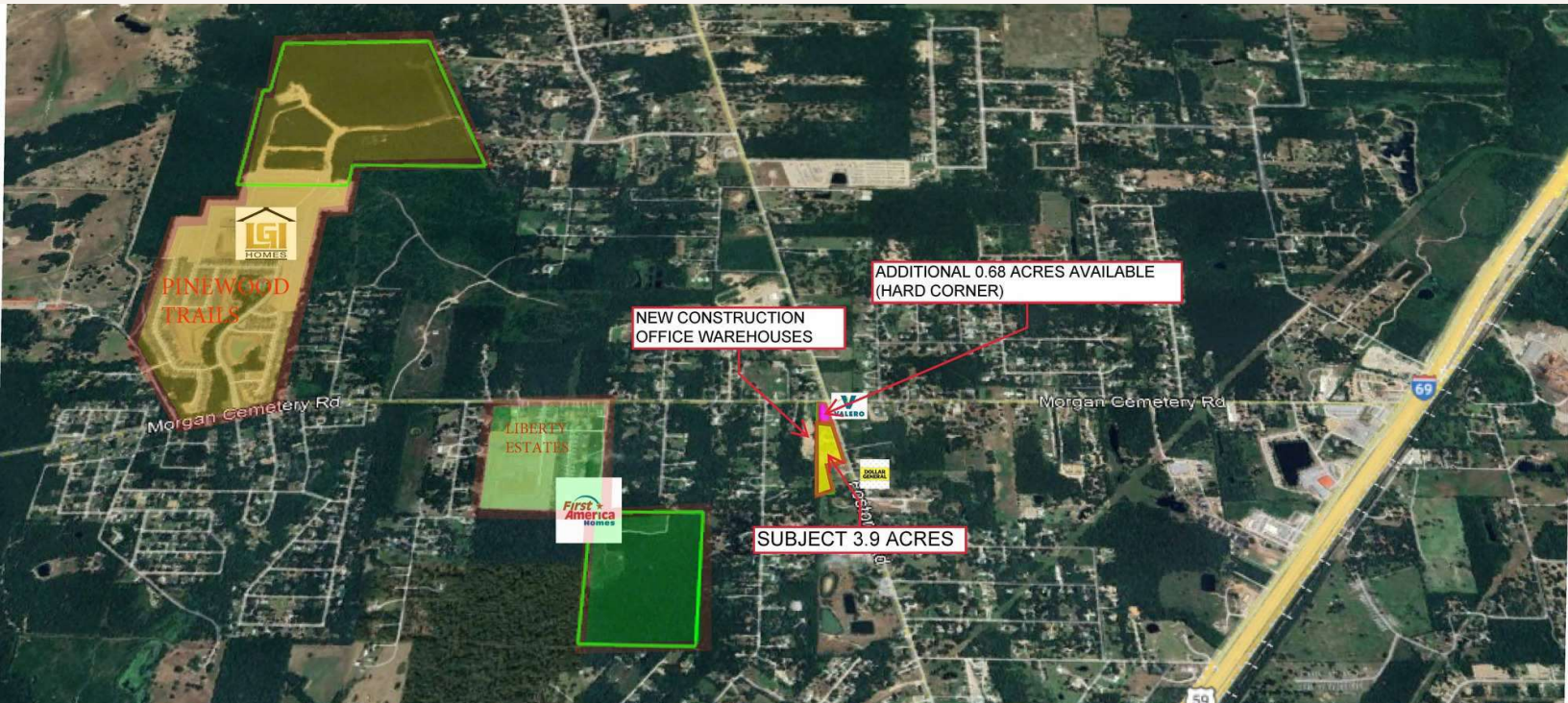


FOSTORIA ROAD | FOR SALE

10994 FOSTORIA ROAD, CLEVELAND, TX 77328



Property Description

Great location with multiple subdivisions being built currently near this parcel.

Property Highlights

- Great location at the intersection of Fostoria Road and Morgan Cemetery Road
- New housing developments near the location
- Busy Intersection with only aged C-Store to supply residents
- 2,020 SF House (to be removed)
- Strong potential for Investment or Owner User

Offering Summary

Sale Price:	\$1,500,000
Number of Units:	1
Lot Size:	3.9 Acres
Building Size:	2,020 SF

Demographics

	0.3 Miles	0.5 Miles	1 Mile
Total Households	44	162	609
Total Population	139	518	1,938
Average HH Income	\$93,971	\$87,361	\$84,021

FOR MORE INFORMATION:



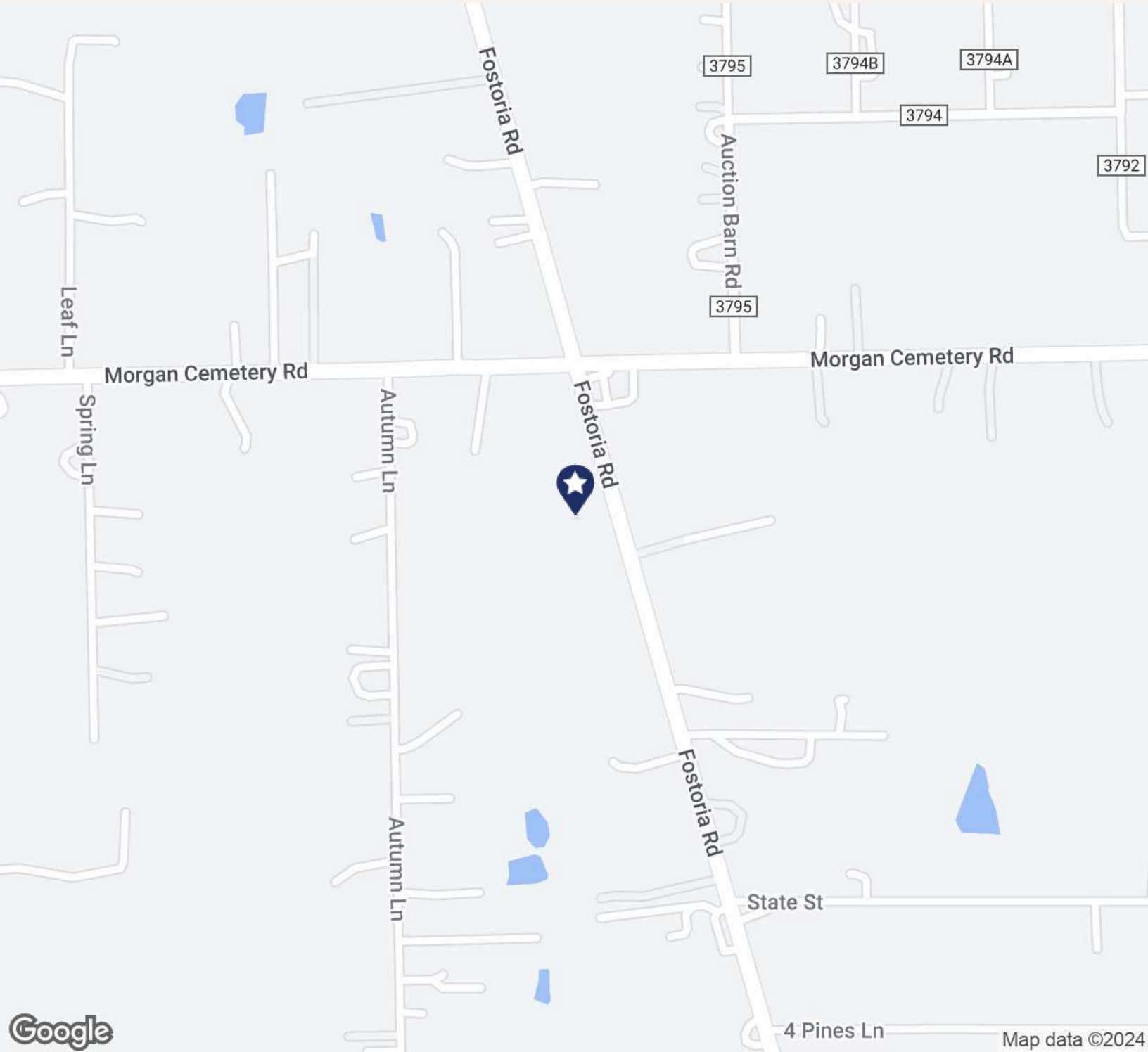
RON BROWN
PRINCIPAL
936.689.7228
RON@TX-CRG.COM



BRYAN ROBERTS
BROKER
979.219.0819
BRYAN@TX-CRG.COM

FOSTORIA ROAD | FOR SALE

10994 FOSTORIA ROAD, CLEVELAND, TX 77328



FOR MORE INFORMATION:



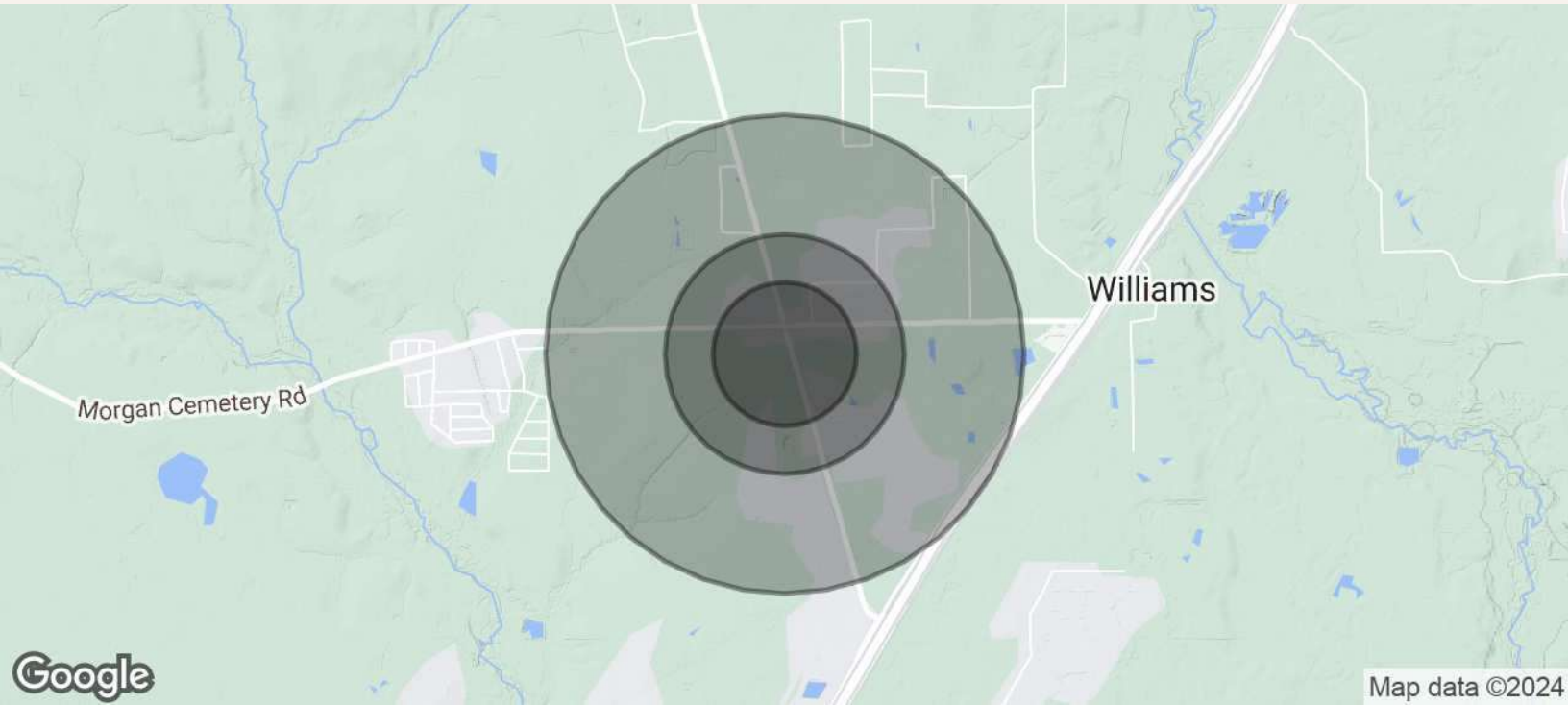
RON BROWN
PRINCIPAL
936.689.7228
RON@TX-CRG.COM



BRYAN ROBERTS
BROKER
979.219.0819
BRYAN@TX-CRG.COM

FOSTORIA ROAD | FOR SALE

10994 FOSTORIA ROAD, CLEVELAND, TX 77328



Population	0.3 Miles	0.5 Miles	1 Mile
Total Population	139	518	1,938
Average Age	37	37	37
Average Age (Male)	37	36	36
Average Age (Female)	37	37	37
Households & Income	0.3 Miles	0.5 Miles	1 Mile
Total Households	44	162	609
# of Persons per HH	3.2	3.2	3.2
Average HH Income	\$93,971	\$87,361	\$84,021
Average House Value	\$297,439	\$261,547	\$247,172

Demographics data derived from AlphaMap

FOR MORE INFORMATION:



RON BROWN
PRINCIPAL
936.689.7228
RON@TX-CRG.COM



BRYAN ROBERTS
BROKER
979.219.0819
BRYAN@TX-CRG.COM

FOSTORIA ROAD | FOR SALE

10994 FOSTORIA ROAD, CLEVELAND, TX 77328



Contact:

Ron Brown
Principal
936-689-7228 Direct
ron@tx-crg.com
www.tx-crg.com

Contact:

Bryan Roberts
Broker
979-219-0819 Direct
bryan@tx-crg.com
www.tx-crg.com

FOR MORE INFORMATION:



RON BROWN
PRINCIPAL
936.689.7228
RON@TX-CRG.COM



BRYAN ROBERTS
BROKER
979.219.0819
BRYAN@TX-CRG.COM

