

POLLOCK

OFFICE BUILDING FOR SALE



2365 Pleasantdale Road
Atlanta, GA 30340

+/-10,000 SF
For Sale

Renée Rosenheck
renee@pollockcommercial.com
O| (678) 524.5487

Michael Dinerman
michael@pollockcommercial.com
O| (404) 310.4577

CORFAC
INTERNATIONAL

CONFIDENTIALITY & DISCLAIMER

All materials and information received or derived from Pollock Commercial/CORFAC International its directors, officers, agents, advisors, affiliates and/or any third party sources are provided without representation or warranty as to completeness, veracity, or accuracy, condition of the property, compliance or lack of compliance with applicable governmental requirements, developability or suitability, financial performance of the property, projected financial performance of the property for any party's intended use or any and all other matters.

Neither Pollock Commercial/CORFAC International its directors, officers, agents, advisors, or affiliates makes any representation or warranty, express or implied, as to accuracy or completeness of the any materials or information provided, derived, or received. Materials and information from any source, whether written or verbal, that may be furnished for review are not a substitute for a party's active conduct of its own due diligence to determine these and other matters of significance to such party. Pollock Commercial/CORFAC International will not investigate or verify any such matters or conduct due diligence for a party unless otherwise agreed in writing.

EACH PARTY SHALL CONDUCT ITS OWN INDEPENDENT INVESTIGATION AND DUE DILIGENCE.

Any party contemplating or under contract or in escrow for a transaction is urged to verify all information and to conduct their own inspections and investigations including through appropriate third party independent professionals selected by such party. All financial data should be verified by the party including by obtaining and reading applicable documents and reports and consulting appropriate independent professionals. Pollock Commercial/CORFAC International makes no warranties and/or representations regarding the veracity, completeness, or relevance of any financial data or assumptions. Pollock Commercial/CORFAC International does not serve as a financial advisor to any party regarding any proposed transaction. All data and assumptions regarding financial performance, including that used for financial modeling purposes, may differ from actual data or performance. Any estimates of market rents and/or projected rents that may be provided to a party do not necessarily mean that rents can be established at or increased to that level. Parties must evaluate any applicable contractual and governmental limitations as well as market conditions, vacancy factors and other issues in order to determine rents from or for the property.

Legal questions should be discussed by the party with an attorney. Tax questions should be discussed by the party with a certified public accountant or tax attorney. Title questions should be discussed by the party with a title officer or attorney. Questions regarding the condition of the property and whether the property complies with applicable governmental requirements should be discussed by the party with appropriate engineers, architects, contractors, other consultants and governmental agencies. All properties and services are marketed by Pollock Commercial/CORFAC International in compliance with all applicable fair housing and equal opportunity laws.

TABLE OF CONTENTS

PROPERTY SUMMARY	3
COMPLETE HIGHLIGHTS	4
FLOOR PLANS	5
PHOTOS	6
PHOTOS	7
LOCATION	8
DEMOGRAPHICS	9
MEET THE TEAM	10



PROPERTY DESCRIPTION

Two-Story, Brick Office Building For Sale
Perfect for a corporate office serving the local market
Located 1 mile or 3 minutes to I-85 with great proximity to I-285

PROPERTY HIGHLIGHTS

- Heavily demised with private offices and meeting rooms
- Large multi-purpose room on the first floor (1,450 square feet)
- Zoned O&I

OFFERING SUMMARY

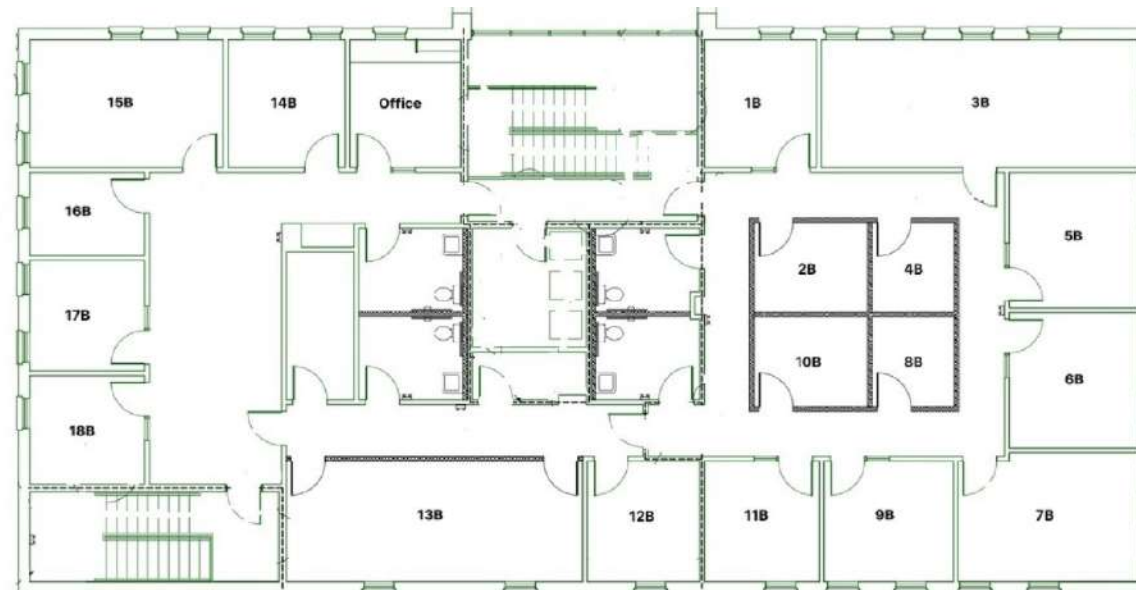
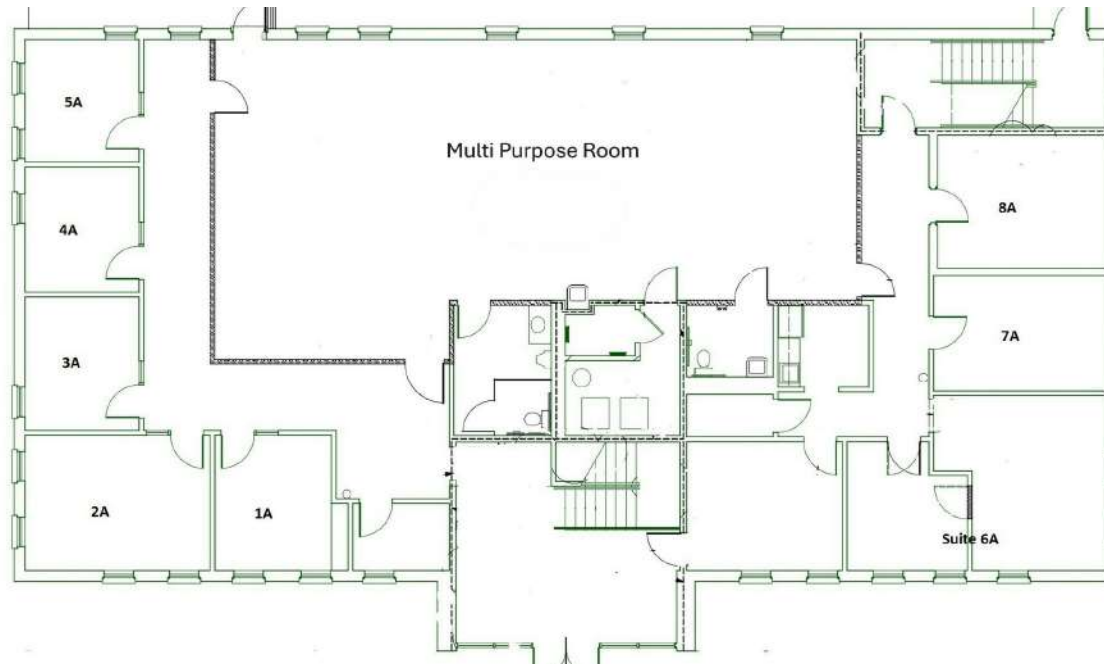
Sale Price:	\$1,300,000
Number of Units:	1
Lot Size:	0.5 Acres
Building Size:	10,000 SF

DEMOGRAPHICS	1 MILE	3 MILES	5 MILES
Total Households	3,068	38,768	101,903
Total Population	8,870	103,683	269,253
Average HH Income	\$63,355	\$83,022	\$107,732



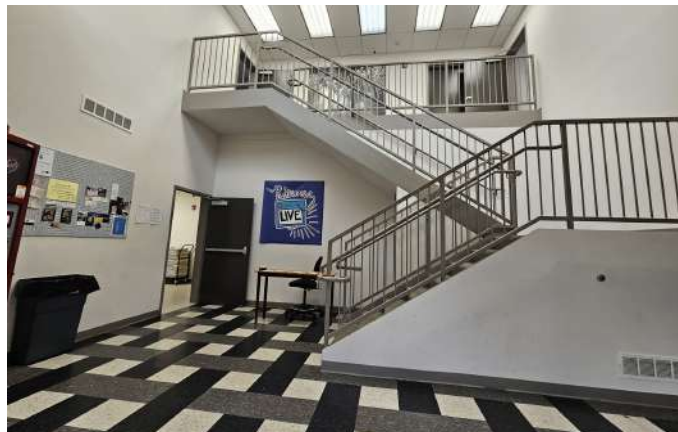
PROPERTY HIGHLIGHTS

- Two-Story Brick Office Building For Sale
- 10,000 SF Building (each floor is 5,000 square feet)
- Perfect for a corporate office serving the local market
- Spacious lobby/reception and waiting room
- Heavily demised with private offices and meeting rooms
- Large multi-purpose room on first floor (1,450 SF)
- Two individual restrooms and a private shower on the first floor; Four individual restrooms on the second floor.
- Plentiful parking (33 spaces) with overflow parking available
- Property features a long-lasting metal roof
- Located 1 mile or 3 minutes to I-85 with great proximity to I-285
- Zoned O&I



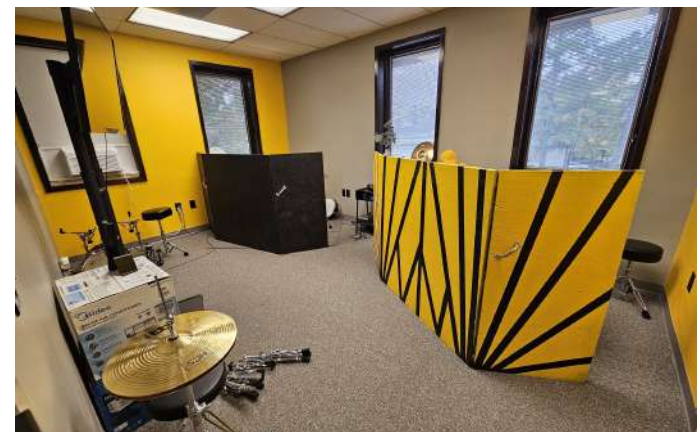
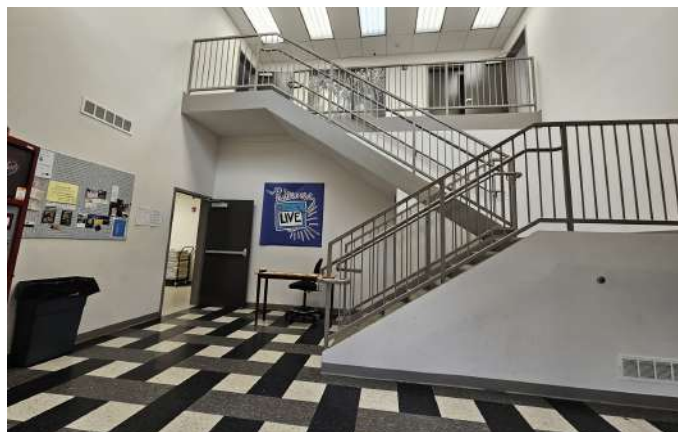
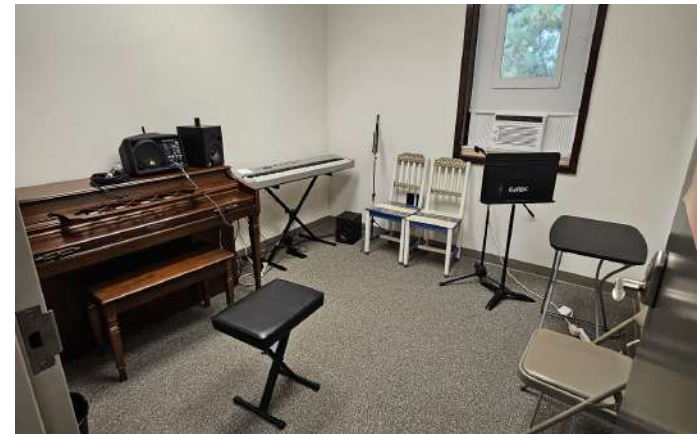
POLLOCK

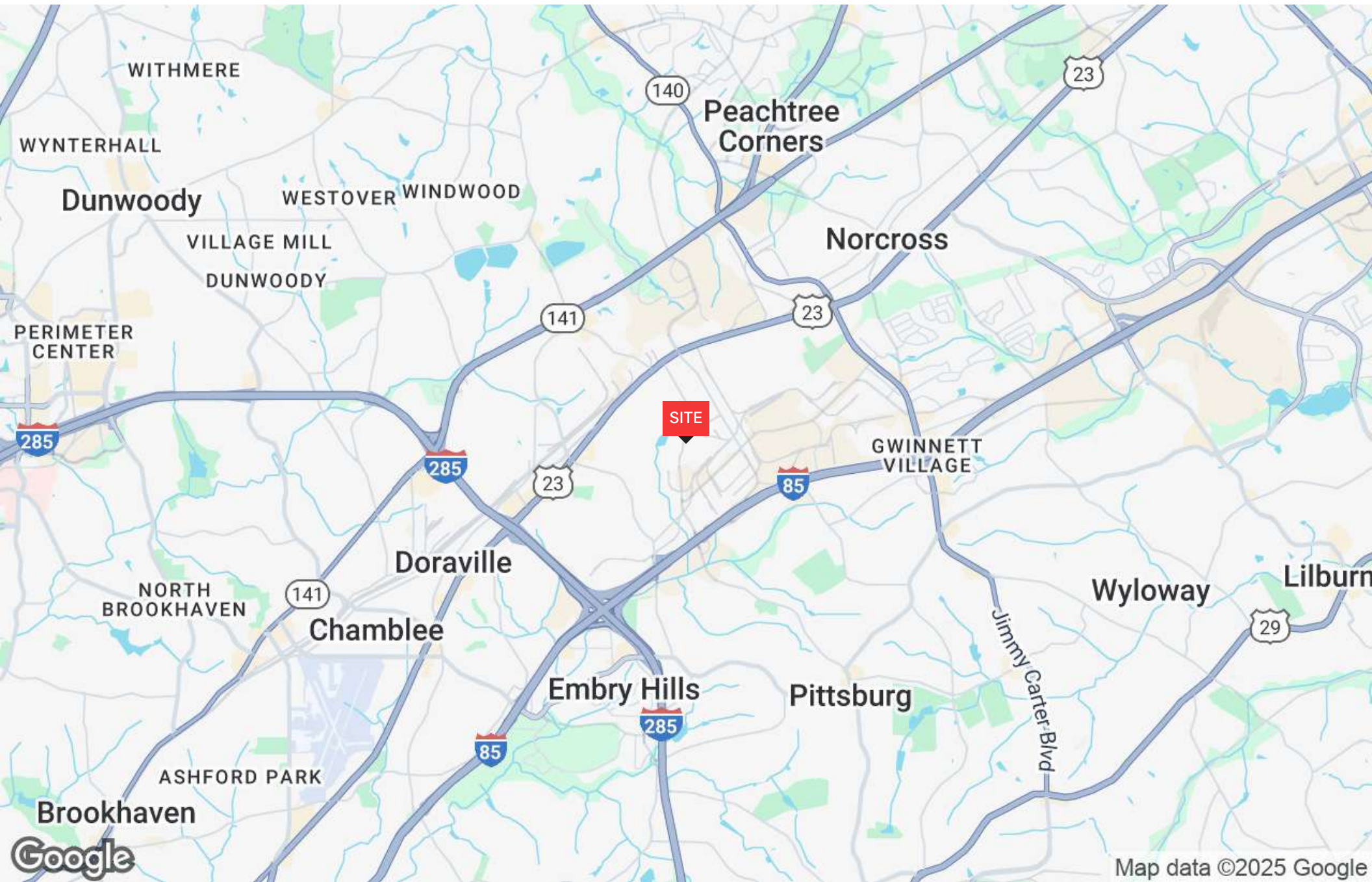
Photos



POLLOCK

Photos

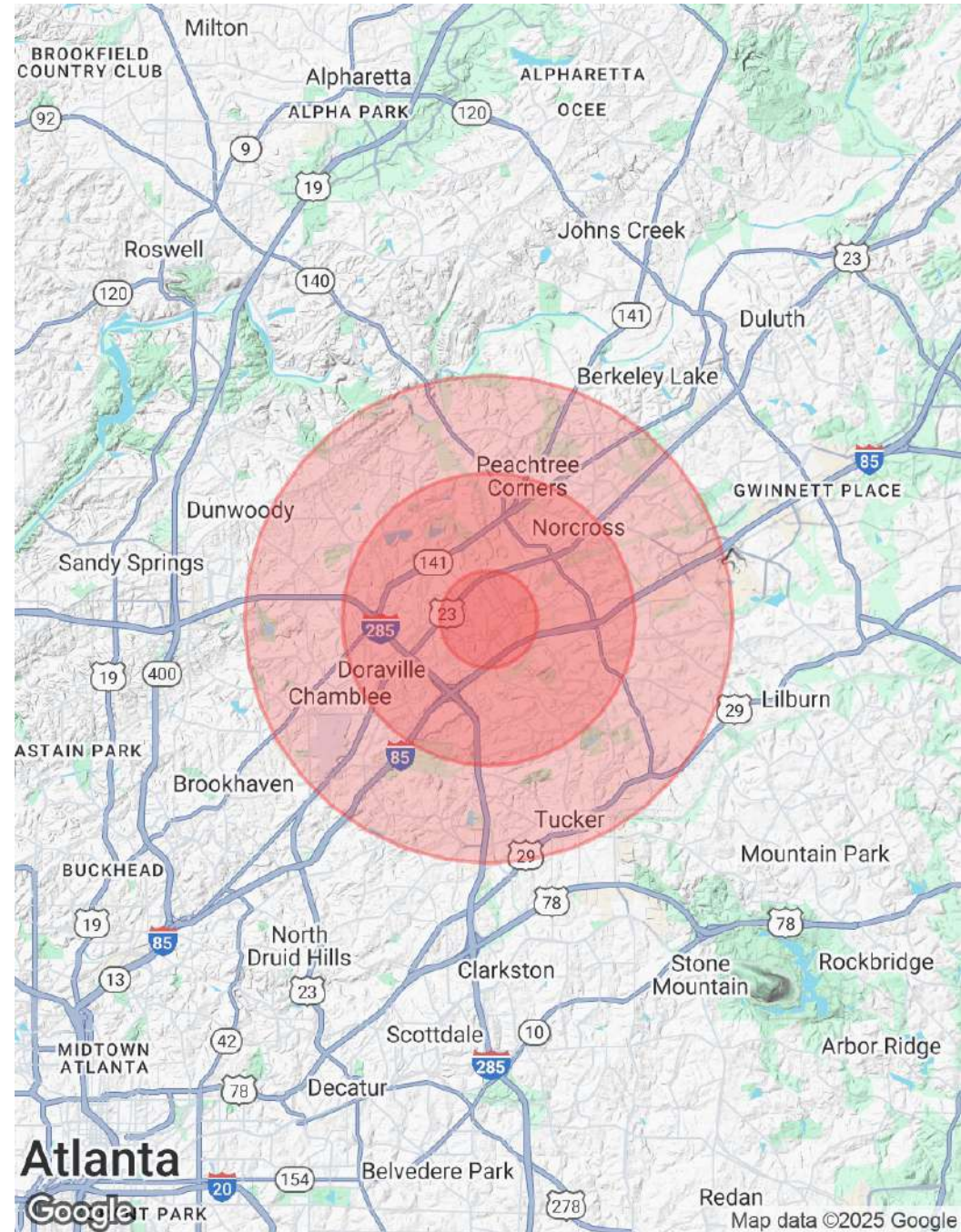




POPULATION	1 MILE	3 MILES	5 MILES
Total Population	8,870	103,683	269,253
Average Age	35	35	37
Average Age (Male)	34	34	36
Average Age (Female)	35	35	38

HOUSEHOLDS & INCOME	1 MILE	3 MILES	5 MILES
Total Households	3,068	38,768	101,903
# of Persons per HH	2.9	2.7	2.6
Average HH Income	\$63,355	\$83,022	\$107,732
Average House Value	\$321,814	\$378,480	\$433,673

Demographics data derived from AlphaMap





RENÉE ROSENHECK

Senior Advisor

Direct: 678.524.5487
renee@pollockcommercial.com



MICHAEL DINERMAN

Direct: 404.310.4577
michael@pollockcommercial.com



Let's get this SOLD.

Renée Rosenheck
renee@pollockcommercial.com
O| (678) 524.5487

Michael Dinerman
michael@pollockcommercial.com
O| (404) 310.4577

POLLOCK

CORFAC
INTERNATIONAL

No warranty or representation, express or implied, is made as to the information contained herein, and the same is submitted subject to errors, omissions, change of price, rental, or other conditions, withdrawal without notice, and to any special listing conditions, imposed by our principals.