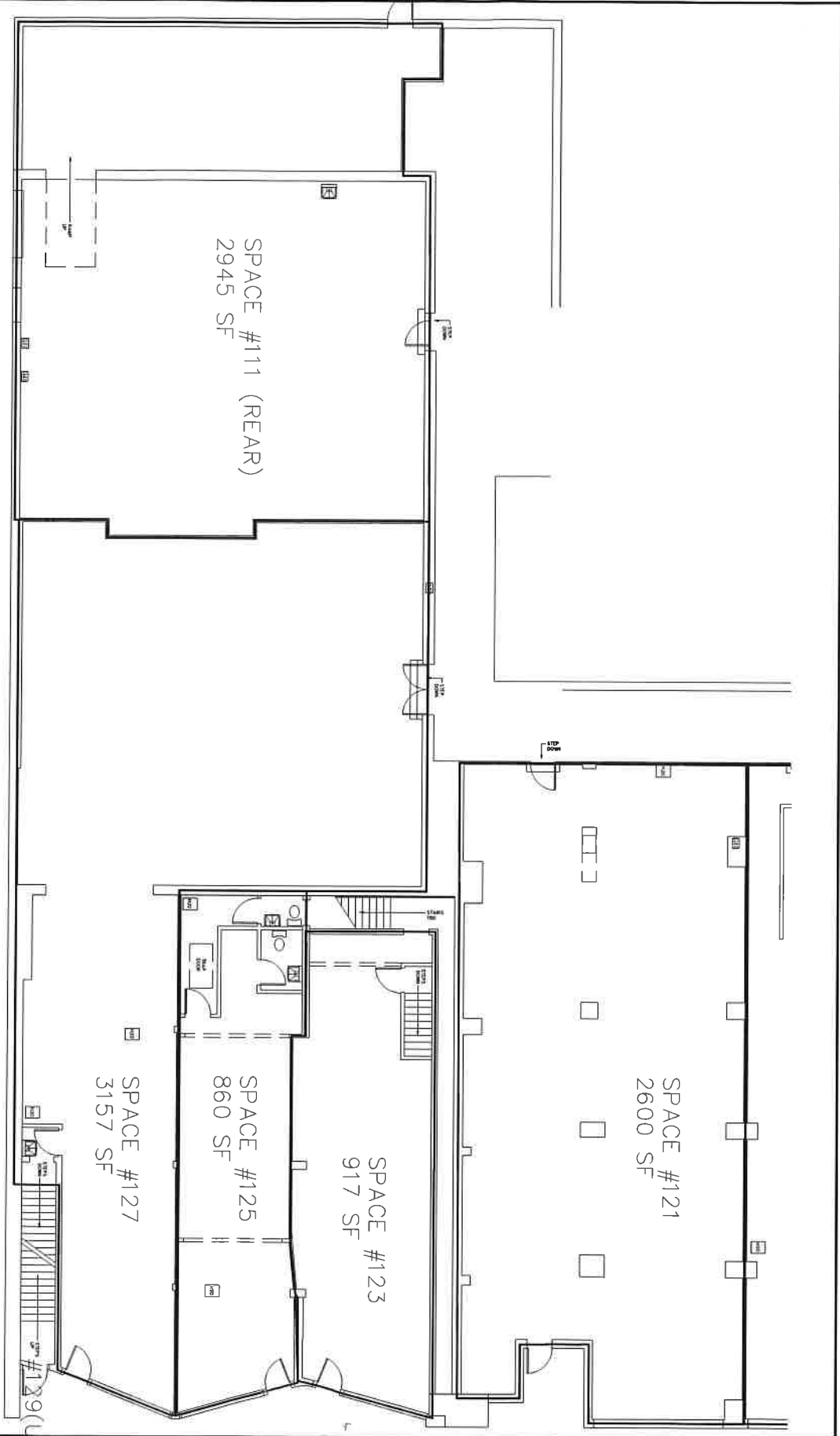


S/
Left side



1 FLOOR PLAN
FROM WORK



SpaceWorks, Inc.
SERVICES

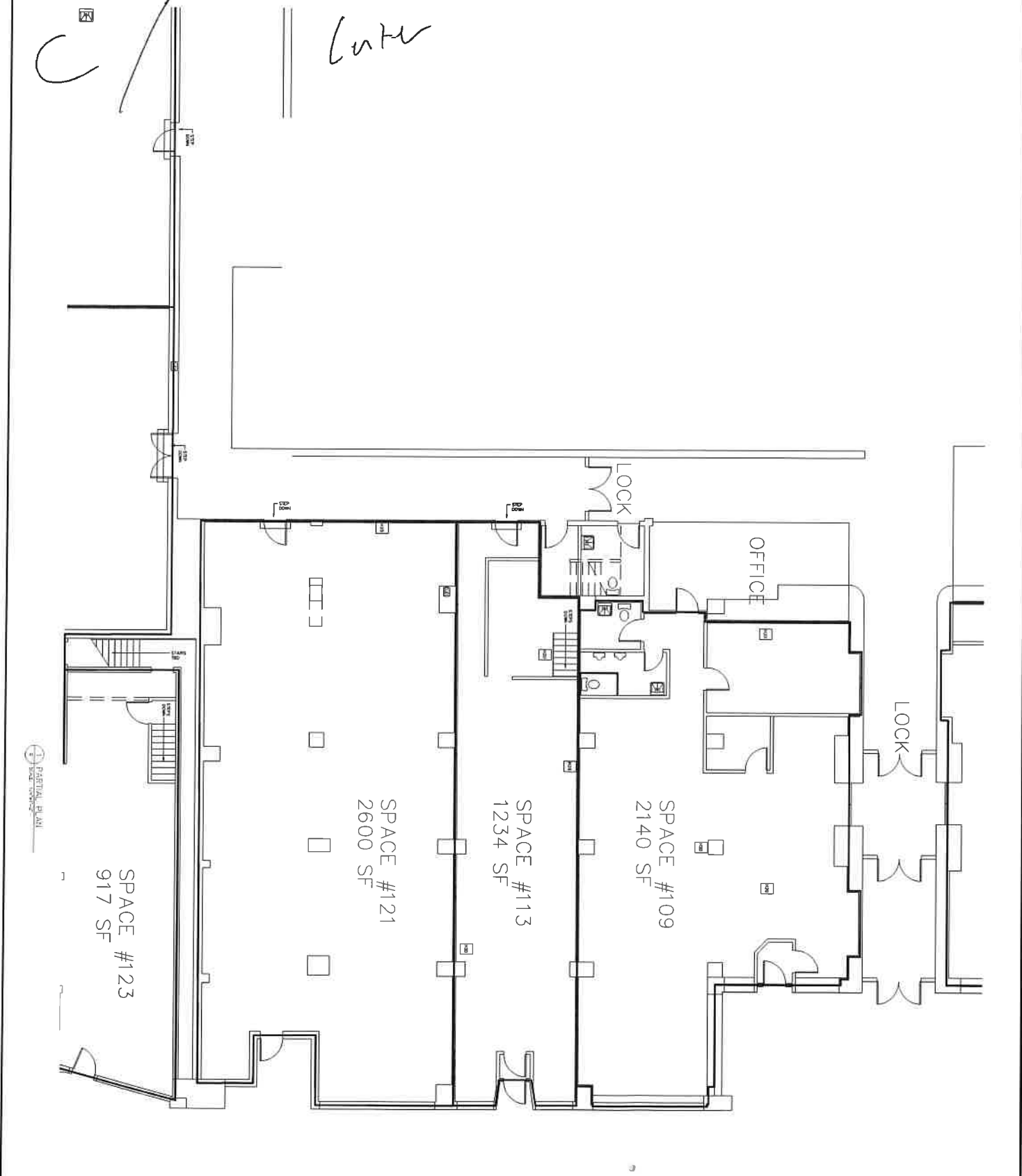
PROJECT
DATE

TITLE
THE COMMONS
BUILDING
1100 EAST AVENUE
ROCKY HILL, CT 06151

FLOOR PLAN

REVISIONS

DATE: 05/24/2010
DRAWN BY: JACOB KOWALIK
SCALE: NOTED
DATE PLOTTED: 05/24/2010
PLOT NAME: 07-20-2010-07-20-2010
DRAWING TITLE: RENTAL SPACE
SOUTH END
DATE: 05/20/2010



Center

OFFICE

LOCK

LOCK

SPACE #109
2140 SF

SPACE #113
1234 SF

SPACE #121
2600 SF

SPACE #123
917 SF

1 PARTIAL PLAN



SpeedWork, Inc.
1234 Main St.
New York, NY

THE COMMONS
BUILDING
111 EAST AVENUE
ROCKYHILL, CT

TITLE
RET PLAN

DATE

PROJECT
MAJ
SHEET
NO.

SCALE
AS SHOWN
DATE
DRAWN BY
CHECKED BY
DESIGNED BY
PROJECT NO.

N / Right side

