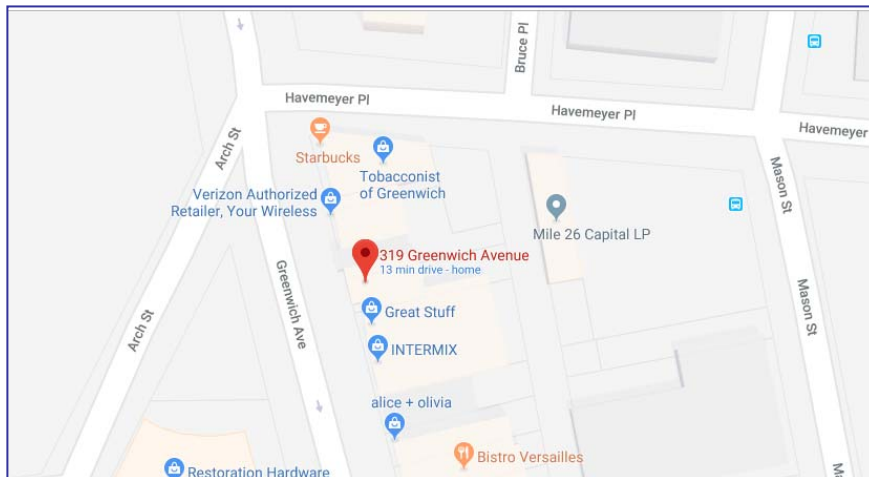


Great Heavily Trafficked Block on the Avenue 319 Greenwich Avenue, Greenwich, CT

Square Feet: 2,025 Square Feet (Ground Floor Retail)
Rental Rate: \$95.00 PSF NNN
Parking: 4 Car Parking Potential with Space
Available: September 4th 2019
Comments: Directly across from Restoration Hardware, same block as Starbucks, Mitchells.

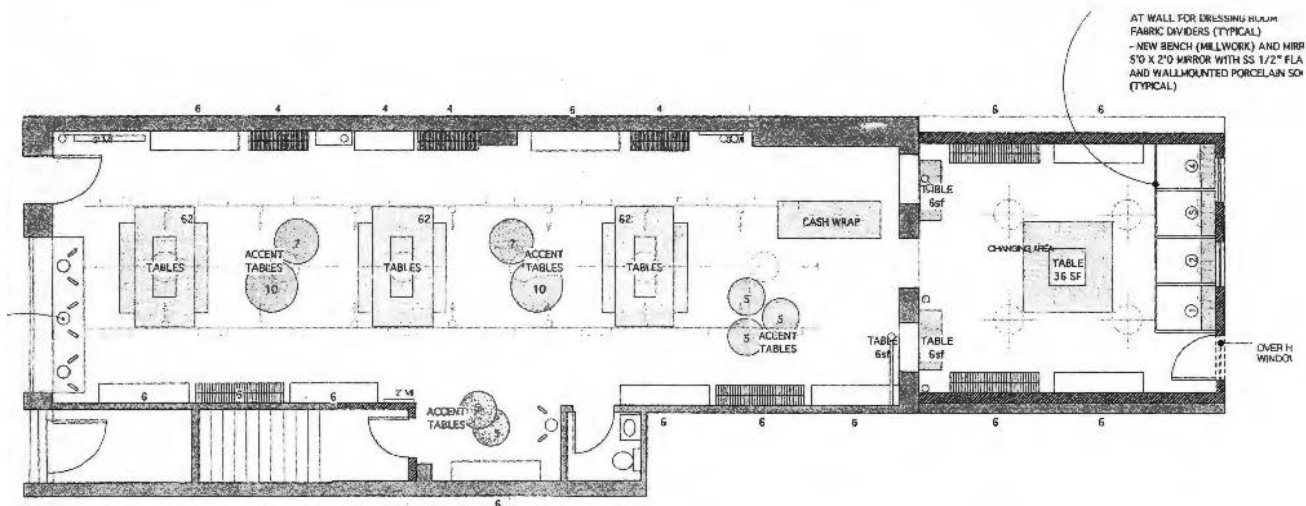


PRESENTED BY:

Brian Dorman
203-391-6803
Brian@pyramidregroup.com

Pyramid Real Estate Group • 20 Summer Street, Stamford, CT 06901
phone: 203.348-8566 • fax: 203.358-9763
www.pyramidregroup.com

Floor Layout



NEW FURNITURE KEY:

- MILLWORK
(TO BE ISSUED AS SEPARATE PACKAGE)
- OPEN SHELVING (PART OF MILLWORK)
- SINGLE HANGING (RACKS B.O.)

USABLE AREA:

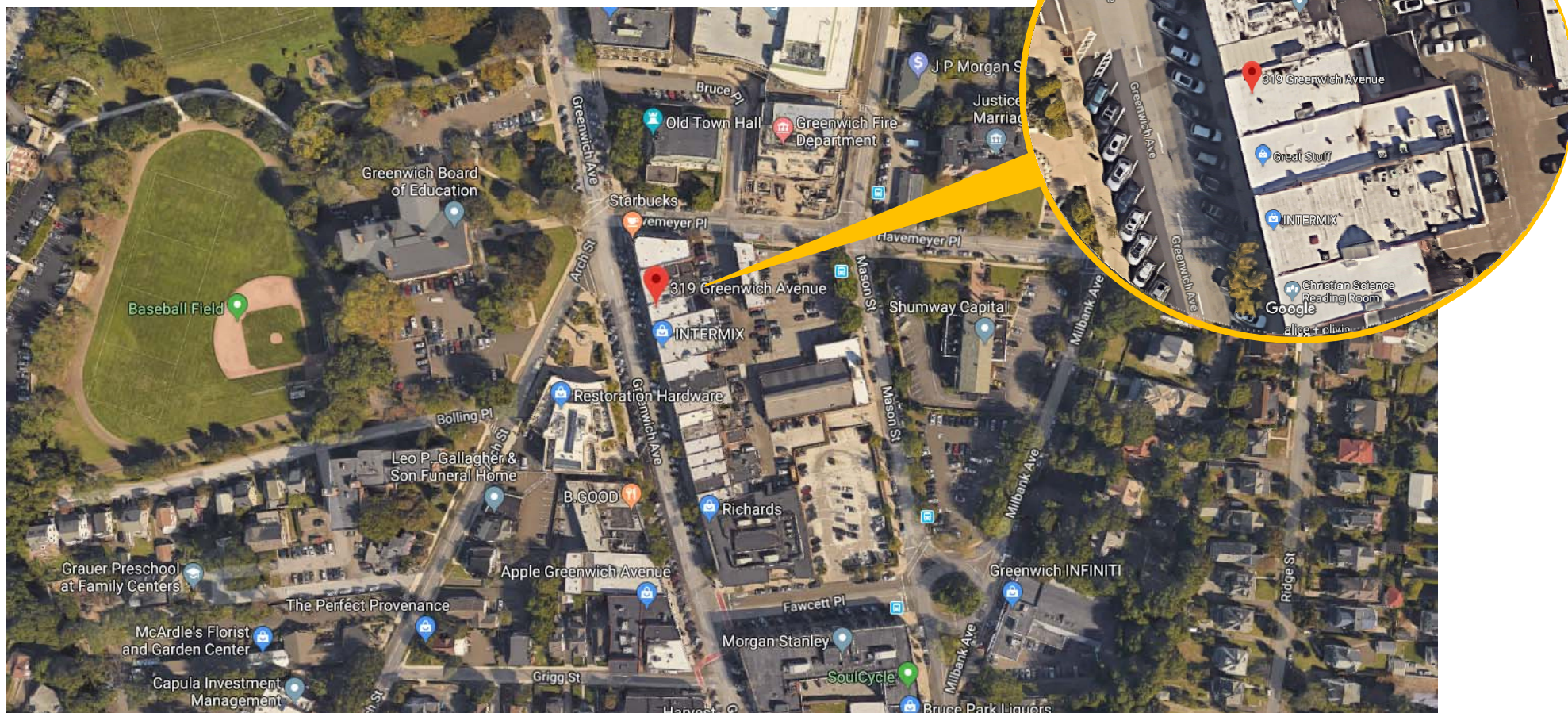
- TABLE AREA = 304 SF
- OPEN SHELVING = 192 LF
- HANGING = 32 LF

PRESENTED BY:

Brian Dorman
203-391-6803
Brian@pyramidregroup.com

Pyramid Real Estate Group • 20 Summer Street, Stamford, CT 06901
phone: 203.348-8566 • fax: 203.358-9763
www.pyramidregroup.com

Aerial View



PRESENTED BY:

Brian Dorman
 203-391-6803
Brian@pyramidregroup.com

Pyramid Real Estate Group • 20 Summer Street, Stamford, CT 06901
 phone: 203.348-8566 • fax: 203.358-9763
www.pyramidregroup.com