

FOR LEASE

1057 ELLIS ROAD NORTH

Jacksonville, FL 32254



OFFERING SUMMARY

Lease Rate:	Call for pricing
Building Size:	97,724 SF
Available SF:	14,700 - 18,000 SF
Year Built:	1979
Renovated:	2020
Zoning:	IL

PROPERTY OVERVIEW

Introducing a prime warehouse opportunity at 1057 Ellis Rd N, Jacksonville, FL. This concrete built versatile property offers two separate units of warehouse and office space designed for efficiency and convenience. With multiple loading docks, one of which being a drive-in bay, logistics are streamlined for seamless operations. The IL zoning allows for a wide range of potential uses. The property has a fire suppression system, ample parking, high ceilings, and a convenient location near major intermodal transportation routes which further enhance the appeal.

PROPERTY HIGHLIGHTS

- Units 12-14-14,700 sq. ft. of available space and a small portion of high image office including a 1,200 SF mezzanine space.
- Units 17-20 -18,000 sq. ft. of available space and a small portion of high image office
- Multiple loading docks
- 1 drive-in bay
- IL zoning
- Fire suppression system
- Newer roof
- Ample parking and plenty of space for truck turning radius
- High ceilings for optimal storage capacity

PRESENTED BY:

ROCHELLE PIERSALL
904.599.3480
rochelle@kinkadecommercial.com

AMANDA KINKADE
904.635.6376
amanda@kinkadecommercial.com

FOR LEASE

1057 ELLIS ROAD NORTH



2929 Plummer Cove Rd., Suite 2
Jacksonville, FL 32223

Jacksonville, FL 32254



PRESENTED BY:

ROCHELLE PIERSALL
904.599.3480
rochelle@kinkadecommercial.com

AMANDA KINKADE
904.635.6376
amanda@kinkadecommercial.com

ADDITIONAL PHOTOS

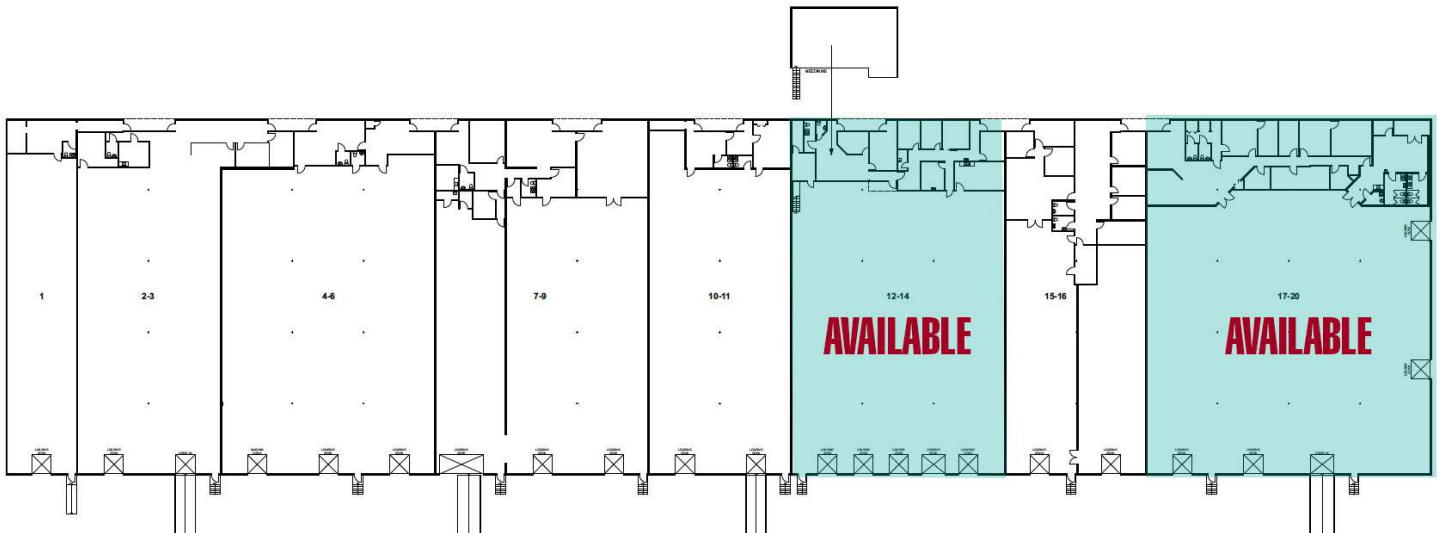
FOR LEASE

1057 ELLIS ROAD NORTH



2929 Plummer Cove Rd., Suite 2
Jacksonville, FL 32223

Jacksonville, FL 32254



PRESENTED BY:

ROCHELLE PIERSALL
904.599.3480
rochelle@kinkadecommercial.com

AMANDA KINKADE
904.635.6376
amanda@kinkadecommercial.com

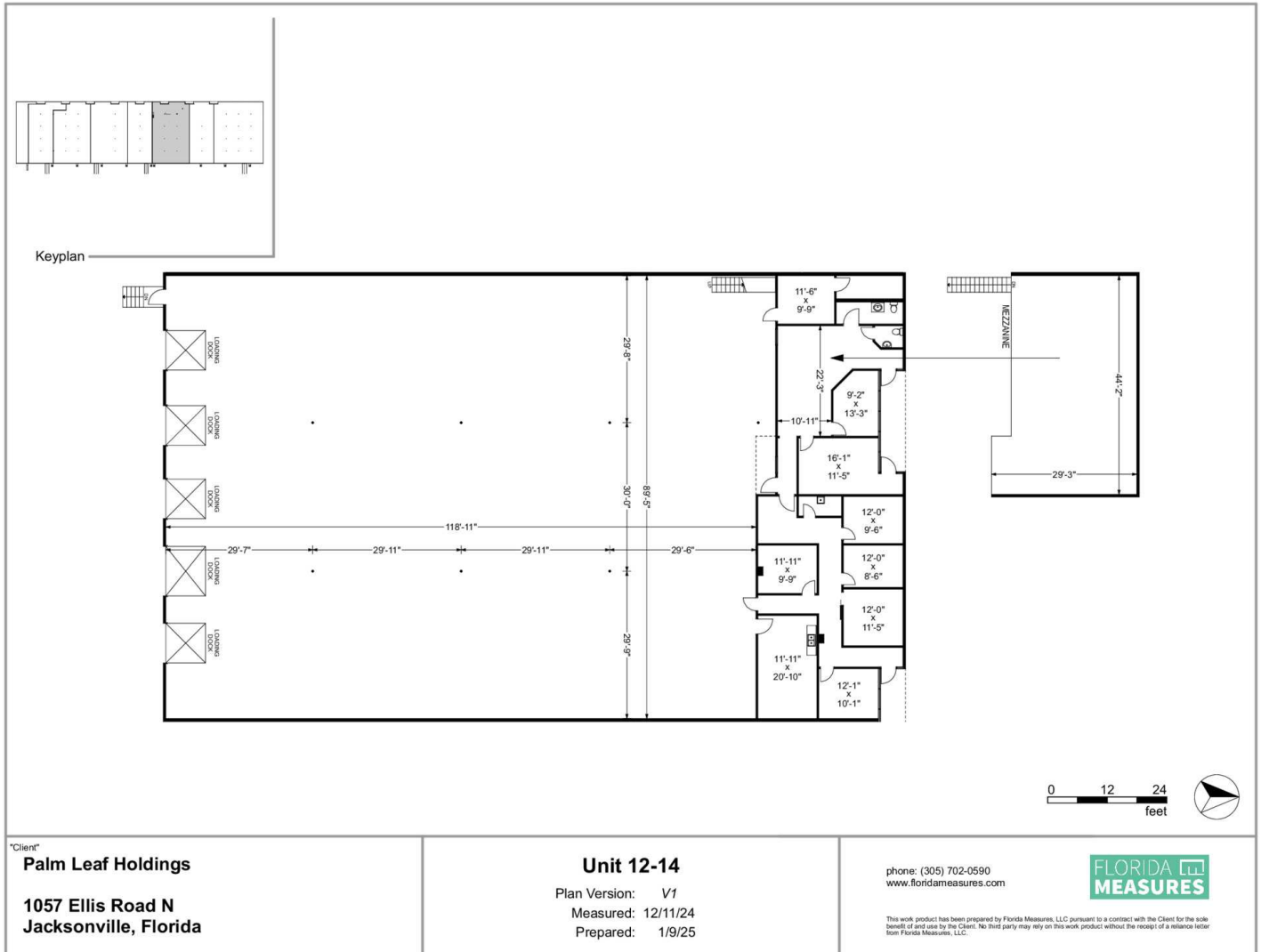
FOR LEASE

1057 ELLIS ROAD NORTH



2929 Plummer Cove Rd., Suite 2
Jacksonville, FL 32223

Jacksonville, FL 32254



PRESENTED BY:

ROCHELLE PIERSALL
904.599.3480
rochelle@kinkadecommercial.com

AMANDA KINKADE
904.635.6376
amanda@kinkadecommercial.com

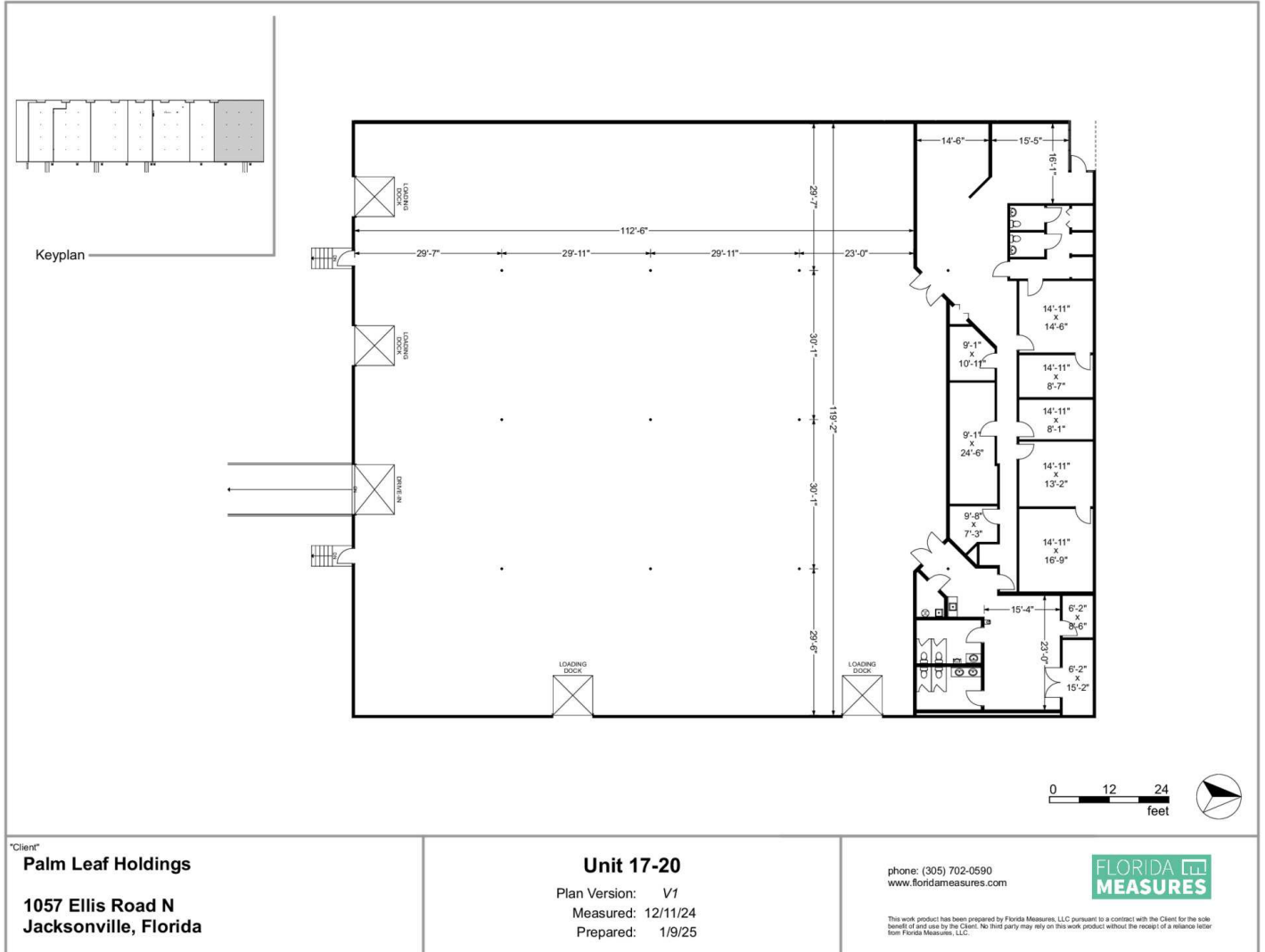
FOR LEASE

1057 ELLIS ROAD NORTH



2929 Plummer Cove Rd., Suite 2
Jacksonville, FL 32223

Jacksonville, FL 32254



PRESENTED BY:

ROCHELLE PIERSALL
904.599.3480
rochelle@kinkadecommercial.com

AMANDA KINKADE
904.635.6376
amanda@kinkadecommercial.com

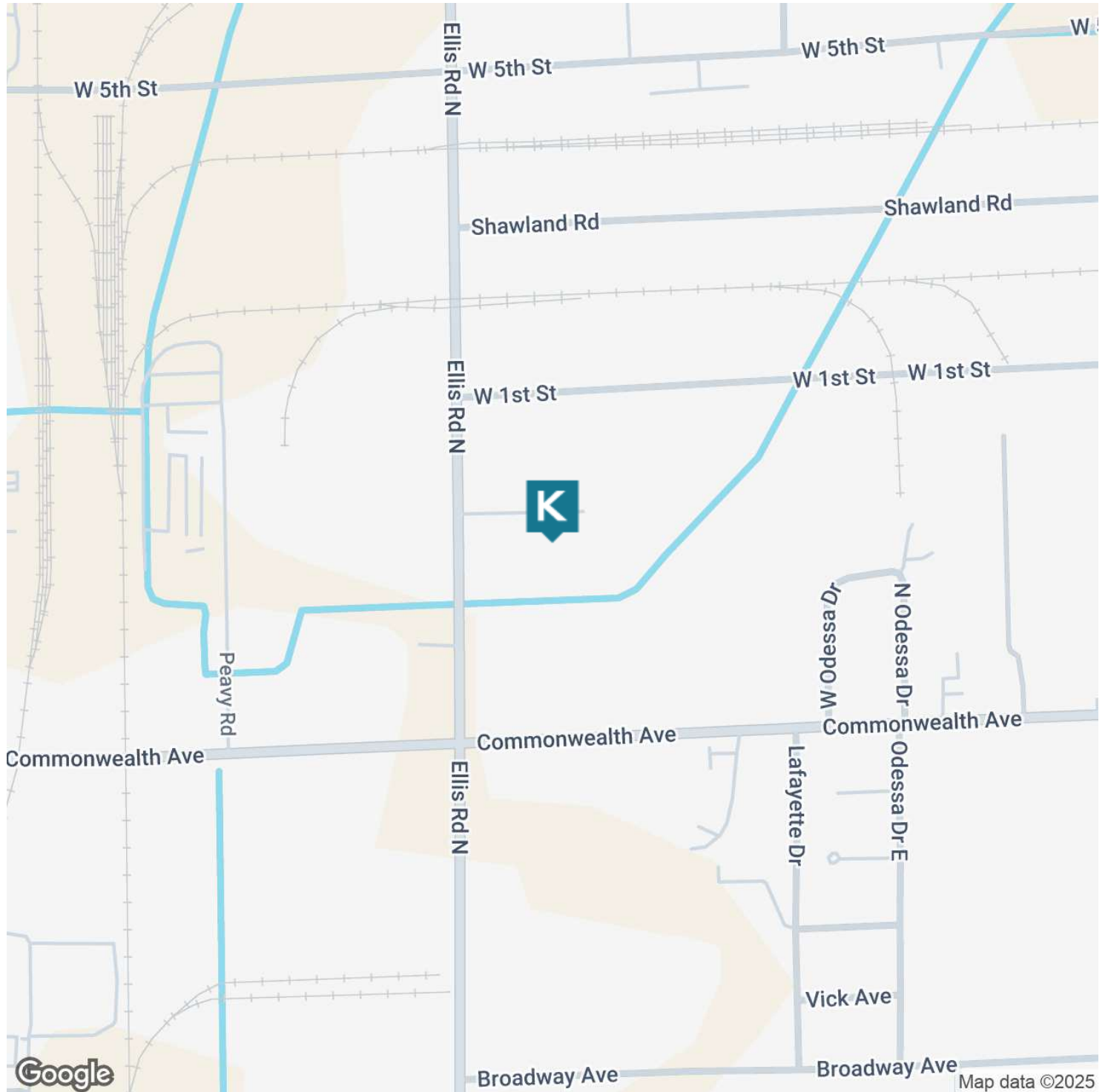
FOR LEASE

1057 ELLIS ROAD NORTH



2929 Plummer Cove Rd., Suite 2
Jacksonville, FL 32223

Jacksonville, FL 32254



PRESENTED BY:

ROCHELLE PIERSALL
904.599.3480
rochelle@kinkadecommercial.com

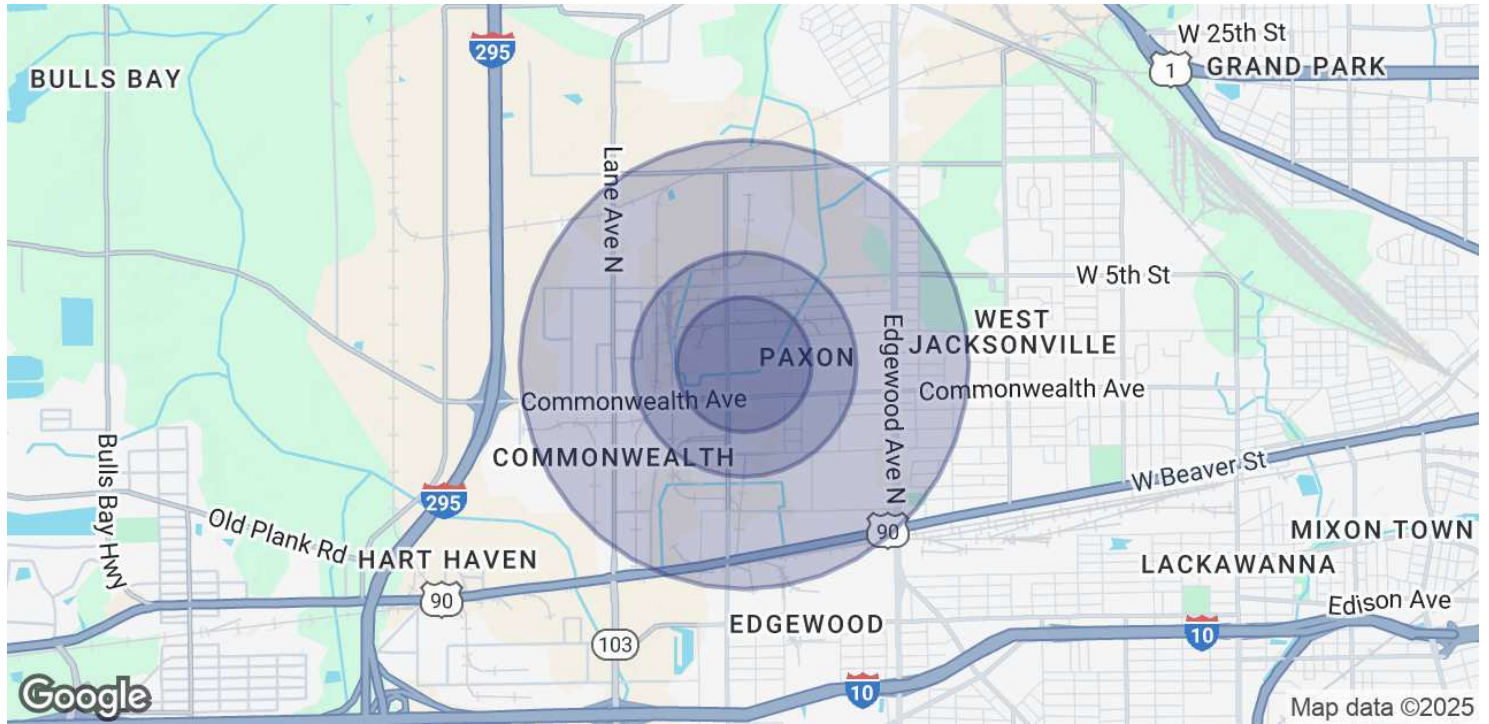
AMANDA KINKADE
904.635.6376
amanda@kinkadecommercial.com

LOCATION MAP

FOR LEASE

1057 ELLIS ROAD NORTH

Jacksonville, FL 32254



POPULATION	0.3 MILES	0.5 MILES	1 MILE
Total Population	90	290	1,904
Average Age	41	41	40
Average Age (Male)	40	40	40
Average Age (Female)	41	41	41

HOUSEHOLDS & INCOME	0.3 MILES	0.5 MILES	1 MILE
Total Households	34	111	734
# of Persons per HH	2.6	2.6	2.6
Average HH Income	\$76,473	\$92,677	\$72,810
Average House Value	\$176,662	\$199,502	\$191,323

Demographics data derived from AlphaMap

PRESENTED BY:

ROCHELLE PIERSALL
904.599.3480
rochelle@kinkadecommercial.com

AMANDA KINKADE
904.635.6376
amanda@kinkadecommercial.com