

Available November 2026

Campana
Waltz **WEST**
Commercial Real Estate

FOR LEASE

Retail/Office Space Available

312 & 314 Second Street, Williamsburg, VA 23188



757.209.2990

Christine Tirone
Christine@cwcrew.net

Vince Campana
Vince@cwcrew.net

Ron A Campana, Jr
Ron@cwcrew.net

CAMPANA WALTZ COMMERCIAL REAL ESTATE WEST | 1313 JAMESTOWN ROAD, SUITE 201, WILLIAMSBURG, VA 23185

Property Summary

Retail/Office Space Available | Class B



Property Highlights

- High Visibility
- Lighted Oversized Monument Sign
- Easy Access to I-64, 199, and Rt 60
- Recently Renovated Free Standing Buildings
- Open Floor Plan
- Traffic Volume
 - Second Street : 14,000 Vehicles Per Day
 - Merrimac Trail : 20,000 Vehicles Per Day

Building Size

314 Second Street : 3,024 Sq. Ft. (available 11/26)

312 Second Street: 4,412 Sq. Ft. (available 11/26)

Can be leased collectively (7,412 Sq Ft total) or individually

Lease Rate

\$18.00 per sq. ft. - NNN

Lot Size

1.42 Acres

Zone

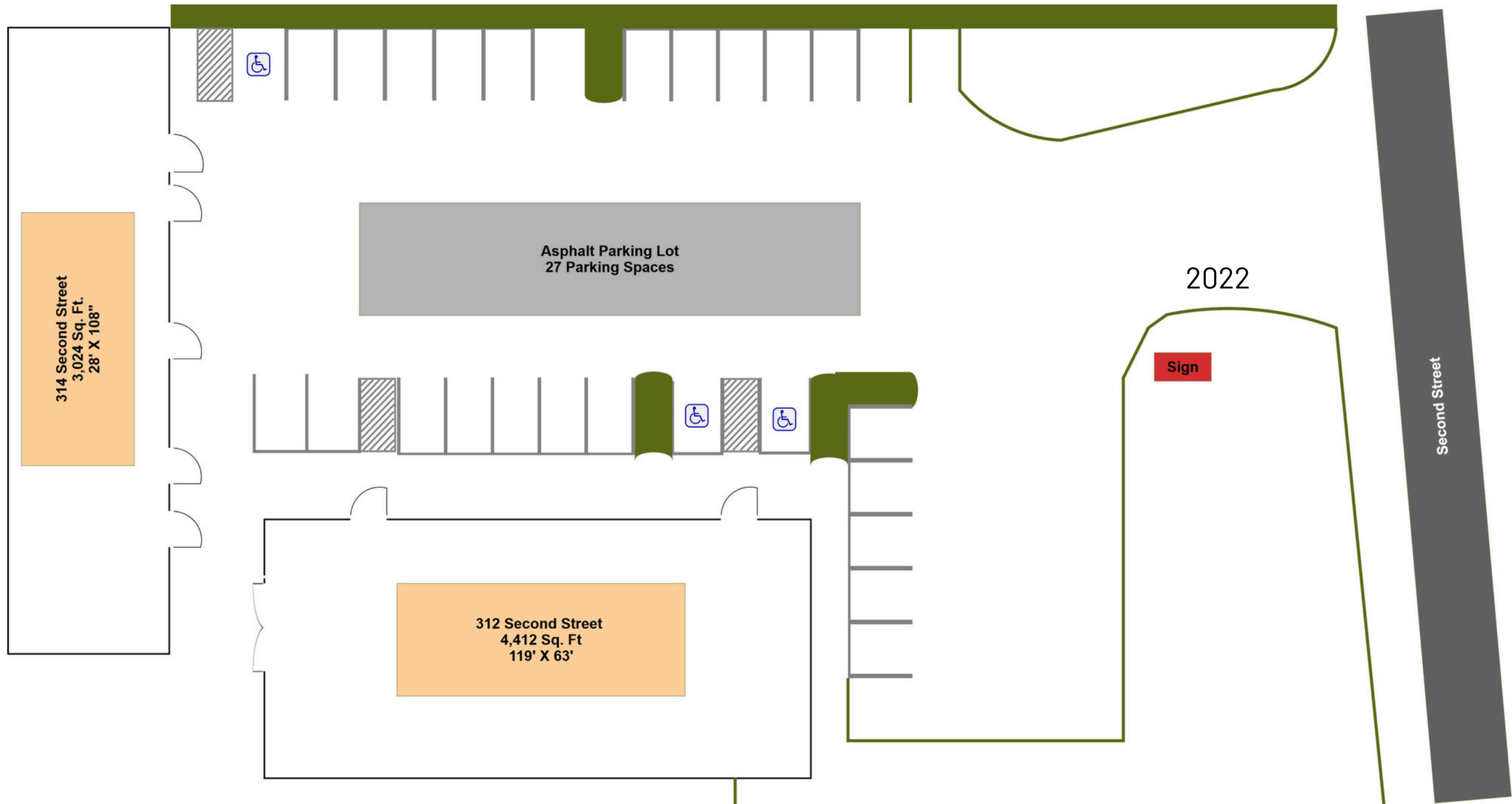
B-2

General Information

Located within Williamsburg City limits; Edge District

Site Plan

312 & 314 Second Street | Williamsburg, VA 23188



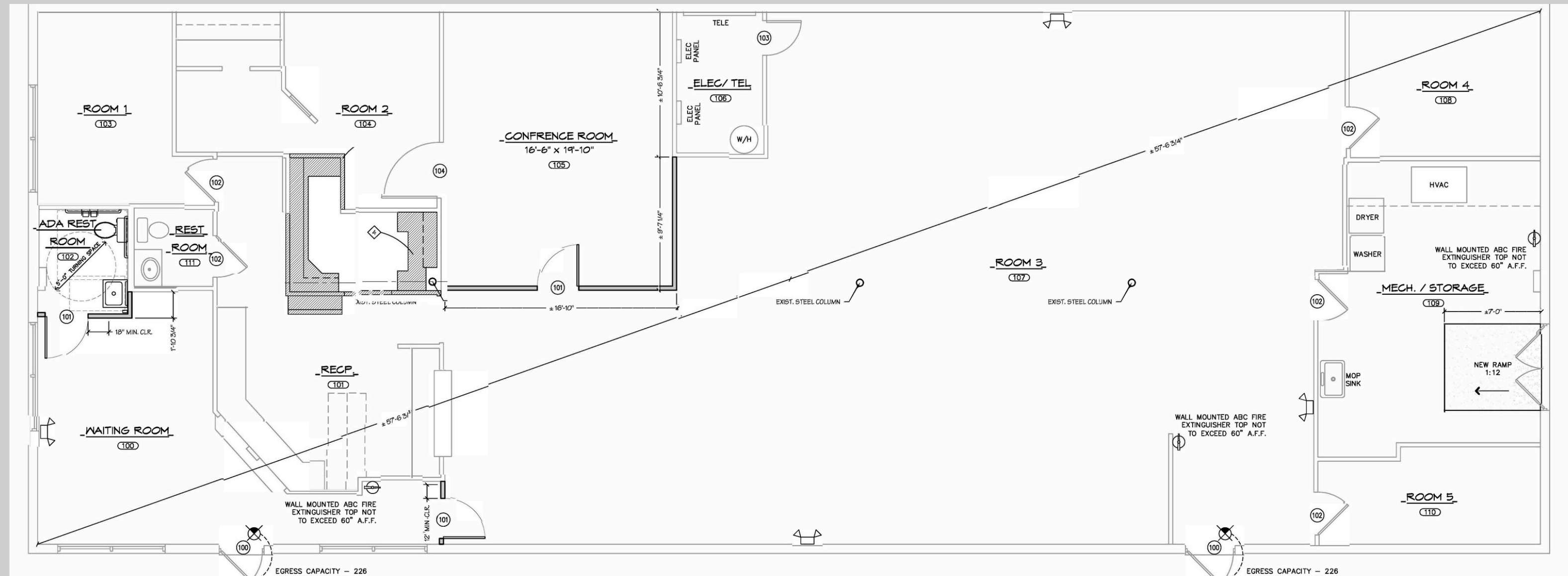
312 Second Street Floor Plan – 4,412 Sq Ft.

Office/Retail Space Available | Class B



Highlights

- ADA Compliant Restrooms
- Two Entrances
- Side Loading Ramp for Deliveries
- Building and Monument Signage



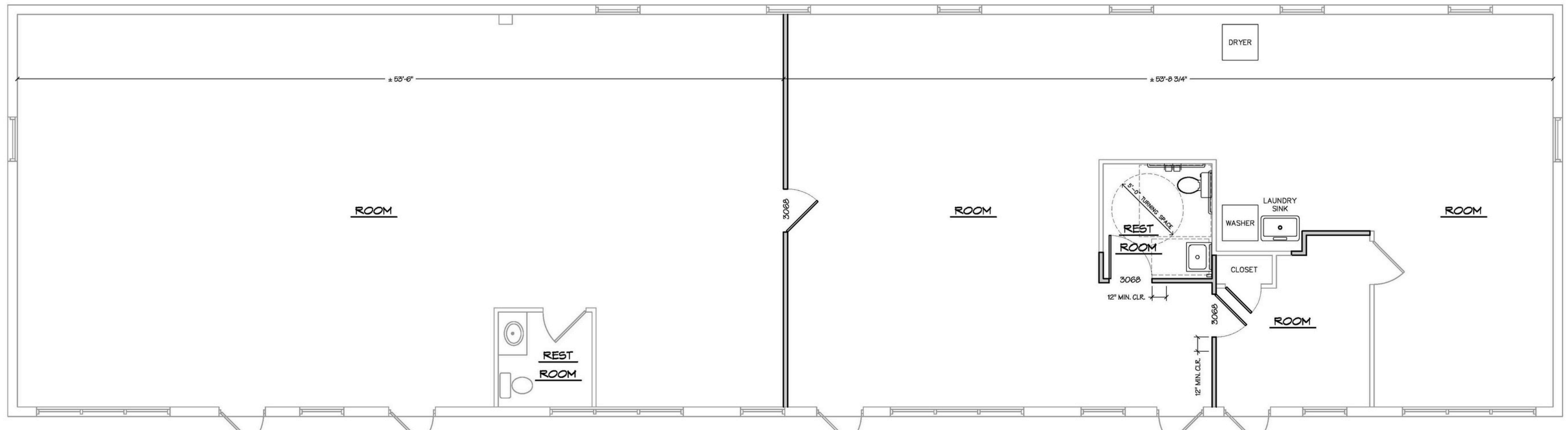
314 Second Street Floor Plan – 3,024 Sq. Ft.

Office/Retail Space Available | Class B



Highlights

- ADA Compliant Restrooms
- Five Entrances
- Open Floor Plan
- Building and Monument Signage



Additional Photos

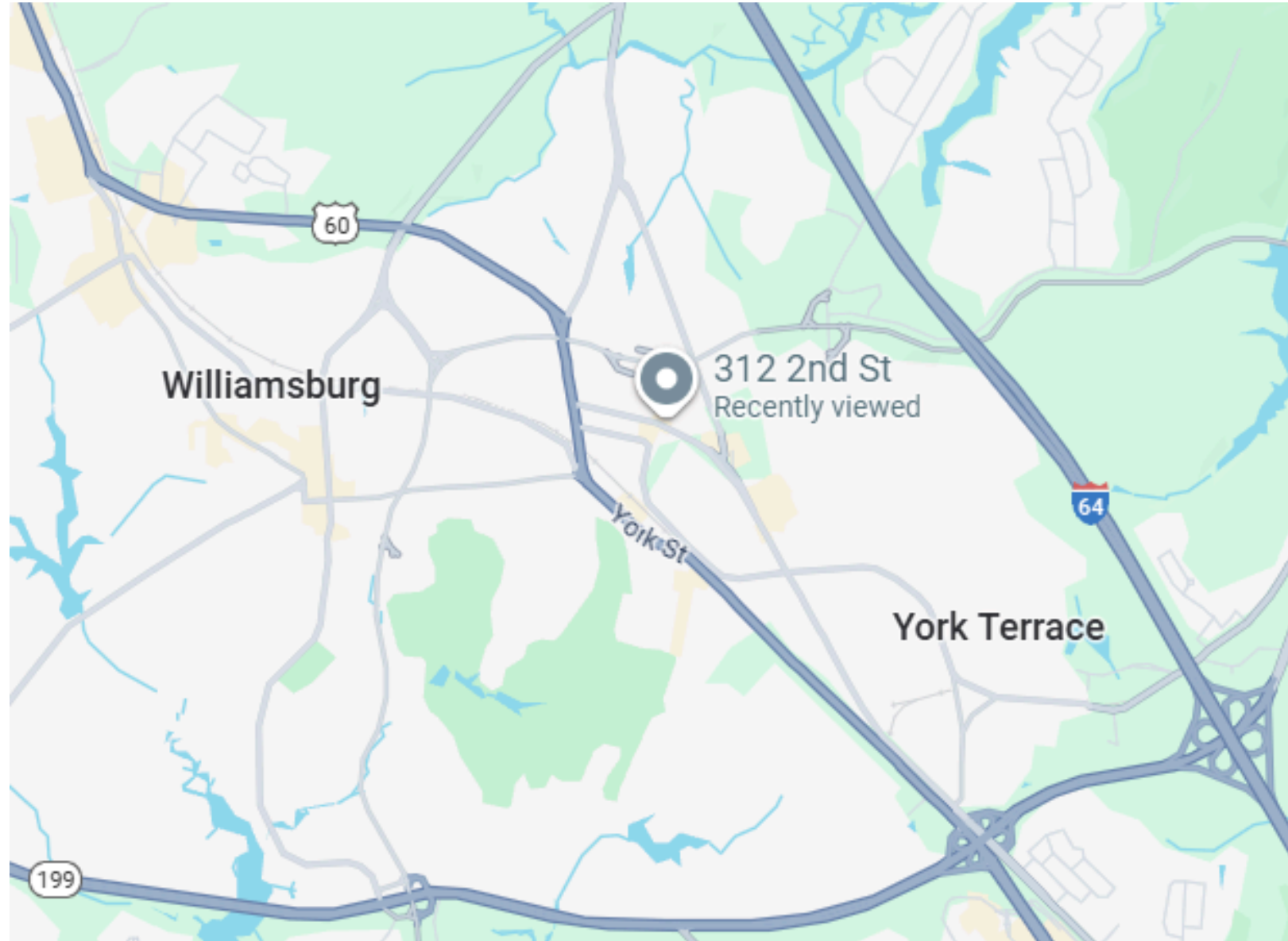
312 Second Street | Williamsburg, VA 23188



Location

312 & 314 Second Street | Williamsburg, VA 23188

Office/Retail Space Available | Class B



Disclaimer:

No warranty or representation, expressed or implied, is made to the accuracy or completeness of the information contained herein, and same is submitted subject to errors, omissions, change of price, rental or other conditions, withdrawal without notice, and to any special listing conditions imposed by the property owner(s). As applicable, we may make no representation as to the condition of the property in question.



For More Information Contact:

Christine Tirone
Christine@cwcrew.net

Vince Campana
Vince@cwcrew.net

Ron A Campana, Jr
Ron@cwcrew.net

757.209.2990