



FOR LEASE

5,000 SF AVAILABLE

202 Bourne Blvd – Unit 160

Key Features

- 5,000 sf available in multi-tenant rear load warehouse
- **Conditioned warehouse** with recently installed HVAC
- 22' ceiling height
- ±1,000 office
- Shared auto parking
- **Turnkey, ready for immediate occupancy**

Location Highlights

- ±9 miles to Port of Savannah
- Excellent access to Interstates 16 and 95
- Multiple direct access routes to the Georgia Ports Authority
- Located in SPA Industrial Park currently home to Kaman Industrial Technologies, FedEx, Gulfstream, and Pulte Homes, among others

Stephen Ezelle, SIOR
Partner

+1 912 441 3083
sezelle@gilbertezelle.com

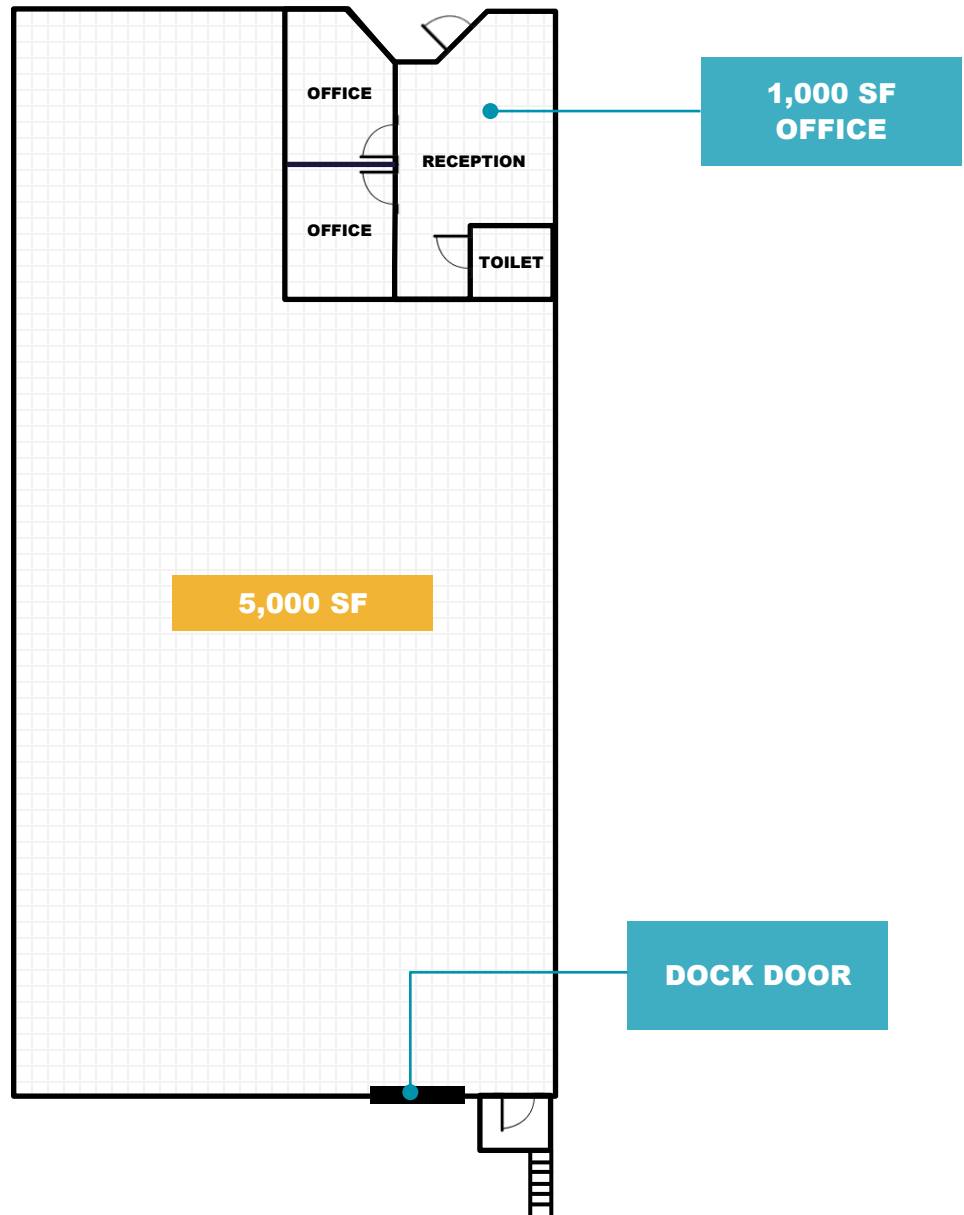
820 Abercorn Street
Savannah, GA 31401

+1 912 236 8992
gilbertezelle.com

cushmanwakefield.com

FLOORPLAN

Unit 160



FOR MORE INFORMATION

Stephen Ezelle, SIOR
Partner
+1 912 441 3083
sezelle@gilbertezelle.com

820 Abercorn Street
Savannah, GA 31401
+1 912 236 8992
gilbertezelle.com

gilbertezelle.com

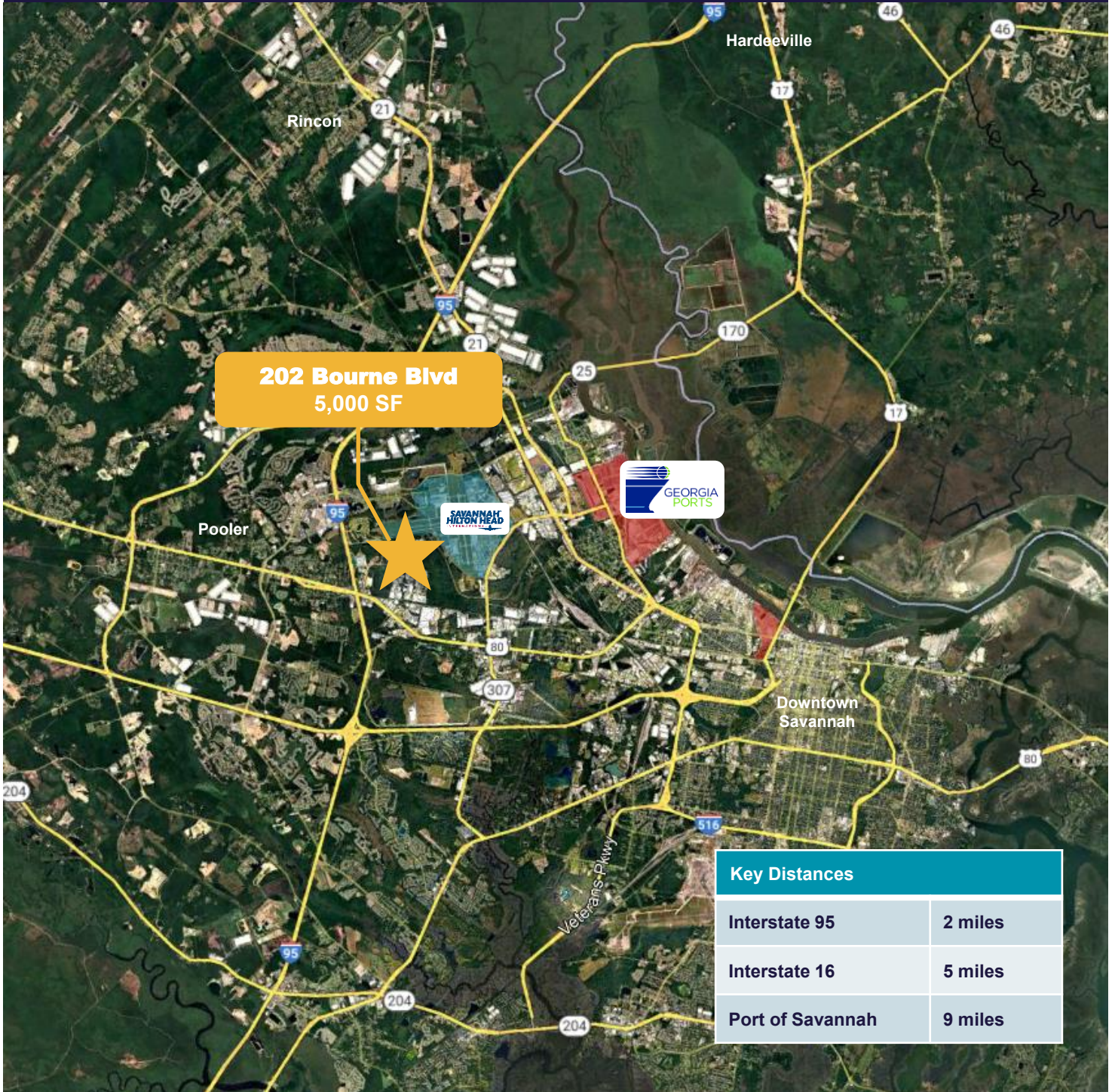


FOR MORE INFORMATION

Stephen Ezelle, SIOR
Partner
+1 912 441 3083
sezelle@gilbertezelle.com

820 Abercorn Street
Savannah, GA 31401
+1 912 236 8992
gilbertezelle.com

gilbertezelle.com



Key Distances	
Interstate 95	2 miles
Interstate 16	5 miles
Port of Savannah	9 miles

FOR MORE INFORMATION

Stephen Ezelle, SIOR
Partner
+1 912 441 3083
sezelle@gilbertezelle.com

820 Abercorn Street
Savannah, GA 31401
+1 912 236 8992
gilbertezelle.com

gilbertezelle.com