

SUBLEASE  
AVAILABLE

# 100 GARDEN CITY PLAZA, GARDEN CITY

Entire 3<sup>rd</sup> floor:  
30,827 RSF

Sublease to  
January 31, 2028

Longer Term  
Available

Upgraded  
Throughout

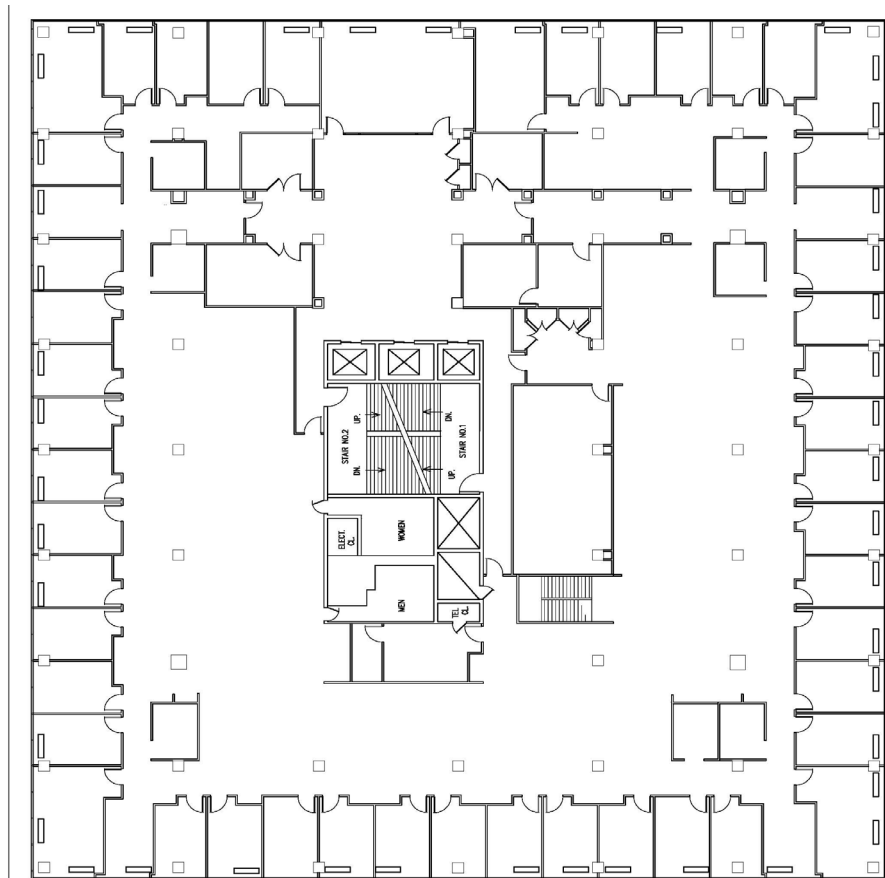
Fully Furnished  
Plug and Play Space







## EXISTING CONDITIONS FLOOR PLAN



# TREELINE

For Leasing Information Contact:  
Kraig Silver, Executive Vice President

**Phone:** 516-837-8070 **Email:**  
[kraig.silver@treelinecompanies.com](mailto:kraig.silver@treelinecompanies.com)

Brokers Protected. All information contained herein regardless of source is deemed reliable, but no warranty or representation is made to the accuracy thereof and should be verified by personal inspection by and/or with the appropriate professional(s). All information contained herein is subject to correction of errors, omissions or withdrawal from market without notice.

---

## ADDITIONAL PICTURES

- Located directly across from Roosevelt Field Mall at Garden City Plaza (a four building multi-tenanted office complex)
- Located in close proximity to the Meadowbrook State Parkway, the Northern State Parkway, and the Long Island Expressway
- Minutes from the Mineola Train Station

