

1340 - 1360 Yorkshire Drive, Streamwood IL

Available: 1.88 Acre Lot



NEW CONSTRUCTION QUALIFIES FOR 6B TAX ABATEMENT

FOR SALE: 1.88 Acre Lot Zoned M-1 for New Building with Outdoor Storage

BUILDING SIZE: +/- 5,000 SF CBA

LAND SIZE: 81,893 SF

ZONING: M-1

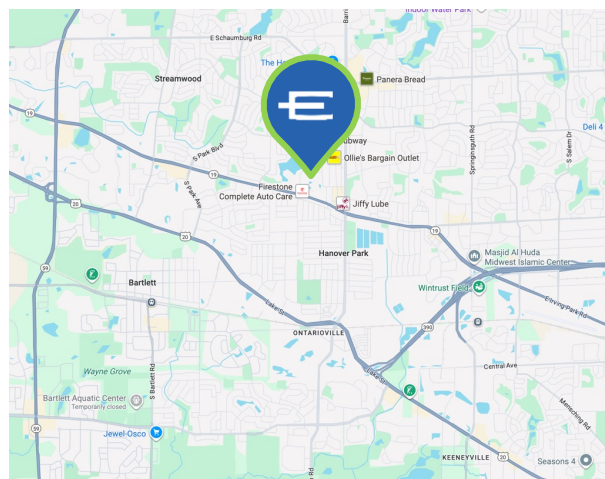
COUNTY: Cook – 6B Eligible

TOWNSHIP: Hanover

TAXES: \$14,956

PINS: 06-25-203-001-0000 & 06-25-203-002-0000

SALE PRICE: \$395,000



SCAN FOR LISTING



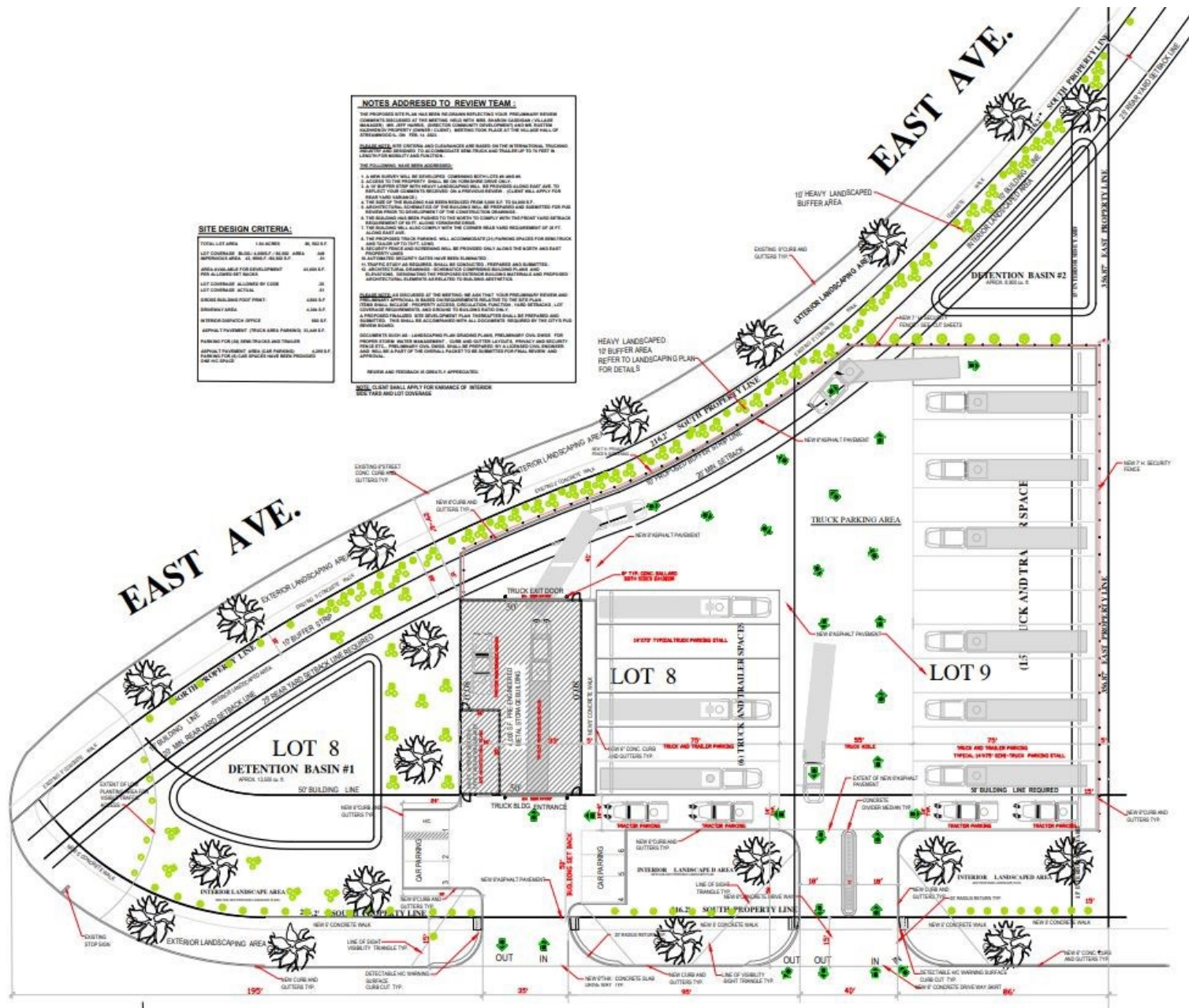
ENTRE
Commercial Realty LLC

Brad Bullington
630-674-6989
bbullington@entreccommercial.com

Ian Pattison
847-650-3124
ipattison@entreccommercial.com

The information contained herein is from sources deemed reliable but is submitted subject to errors, omissions and to change of price or terms without notice.

SITE PLAN

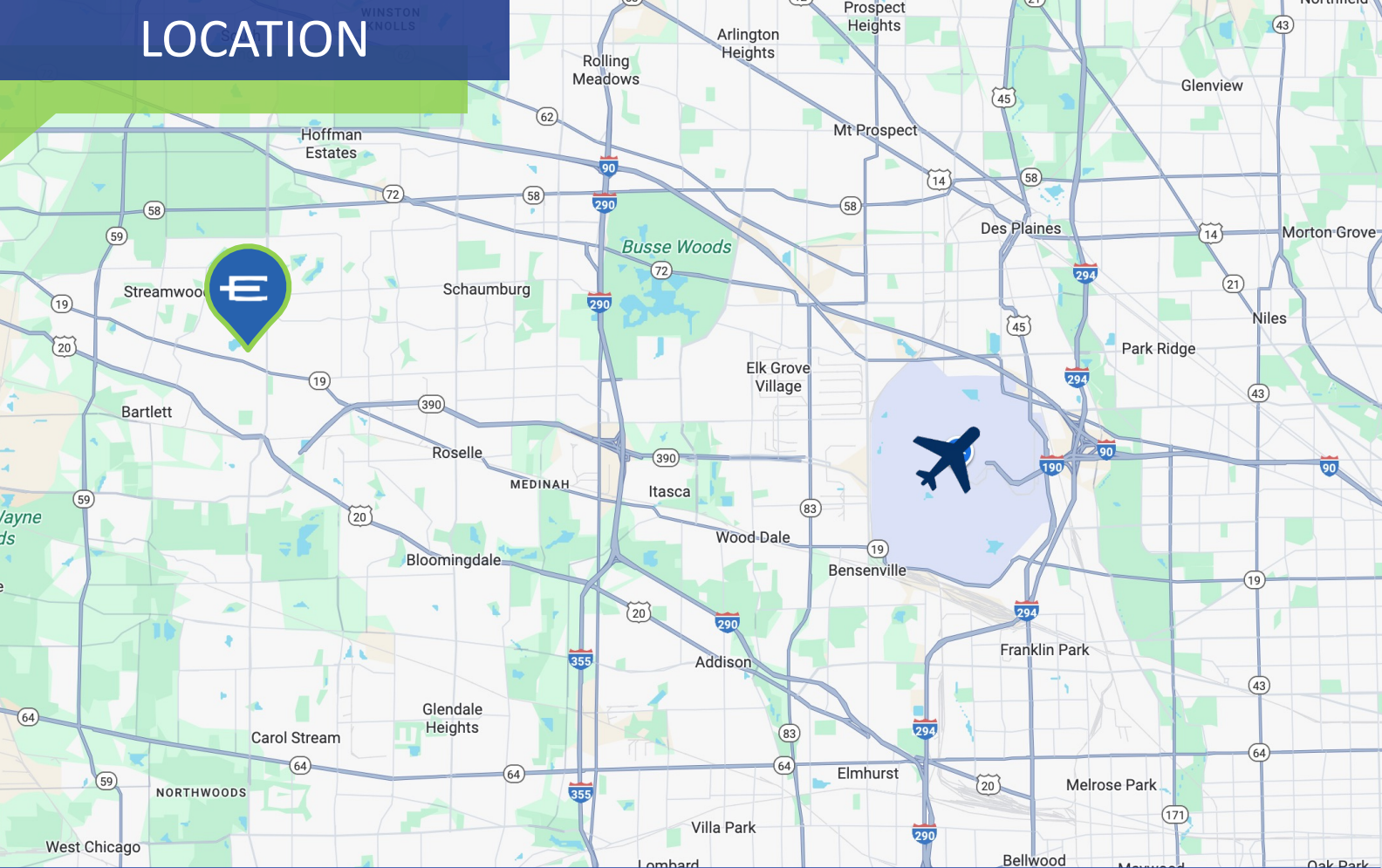




PROPERTY SUMMARY

1.88 Acre corner lot for sale in the Streamwood industrial park. Excellent opportunity to build a small warehouse with outdoor storage for vehicles, trucks, or materials. Two parcels are combined to make up the 1.88 acres. The land is priced well below market, under \$5.00 PFS.

LOCATION



1340 - 1360 Yorkshire Drive, Streamwood IL

LOCATION

1340 – 1360 Yorkshire Drive in Streamwood, IL presents a prime development opportunity on a 1.88-acre lot zoned M-1. This site is ideally suited for a small warehouse project with the added benefit of outdoor storage, making it highly attractive for a wide range of industrial users. The property offers convenient access to major highways, providing efficient connectivity throughout the Chicago metropolitan area and to O'Hare International Airport. In addition, it qualifies for the 6B tax abatement program, offering significant long-term savings for future ownership or development. With strong accessibility and flexible use potential, this property is an excellent choice for investors or businesses looking to establish a custom-built facility in Streamwood.