

FOR SALE

2133 SOUTH SHAVER PASADENA, TX 77502

± 15,400 SF INDUSTRIAL BUILDING

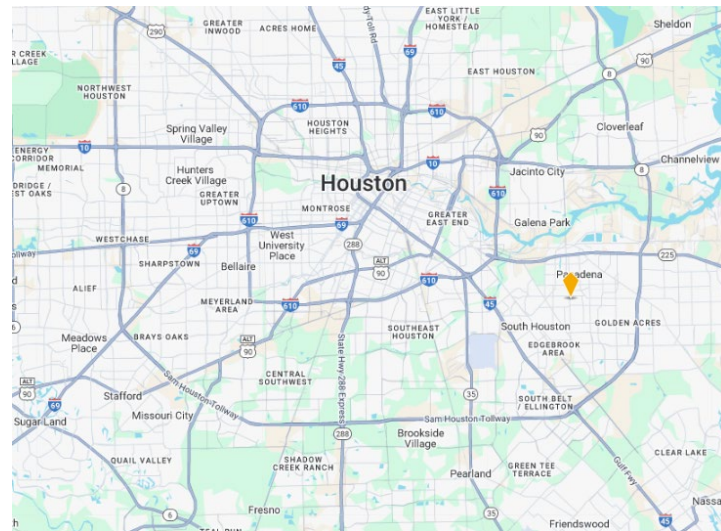
± 12.14 Acre Rectangular Tract

Strategic Location



PROPERTY DETAILS

- ± 15,440 SF Distribution Facility
 - ± 12.14 Acre Rectangular Tract/ Heavy Concrete
 - Dual Frontage: ± 480 FT on Shaver and
± 480 FT on Central Avenue
 - Diesel Powered Generator
 - Level Topography
 - Multiple Grade Level (Drive In) Doors
 - Hydraulic Lift
 - Multiple Storage Containers
 - Potential Uses: Industrial, Outdoor Storage Yard,
Towing Companies, Salvage, etc....
 - Utilities Available
-
- Sales Price: \$5,500,000.00



Located in Southeast Houston Industrial Corridor in close proximity to Hwy 225, Beltway 8 and Port of Houston. Also, position along S Shaver Street, a Major Commercial Corridor.

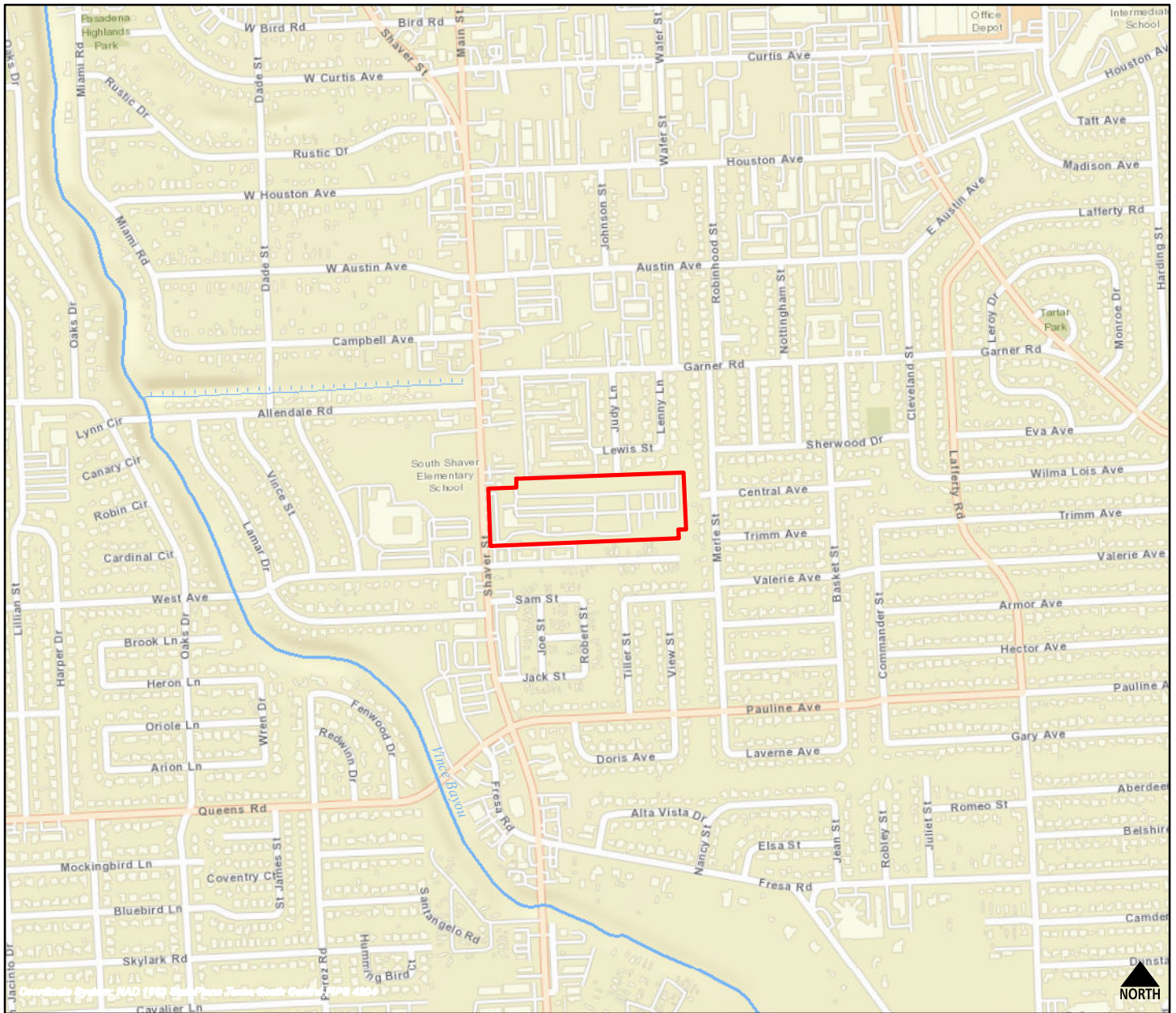
SMITH RAINES COMPANY

Carolyn Fincher, Broker

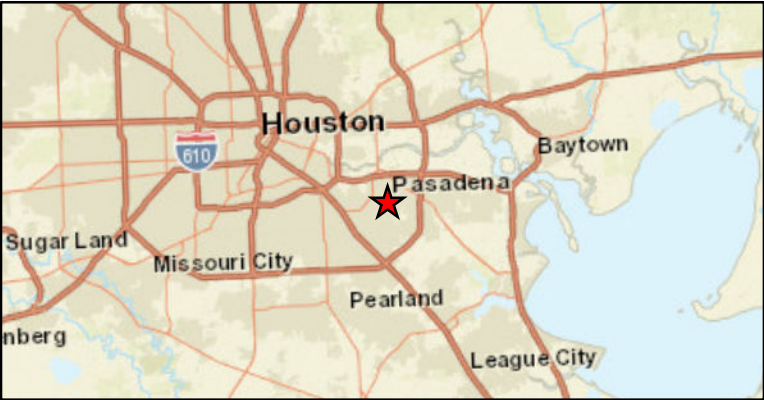
(o) 281.486.1400 (c) 713.299.3192

smithraines@yahoo.com

1307 Bluebonnet Drive, Taylor Lake Village, TX 77586

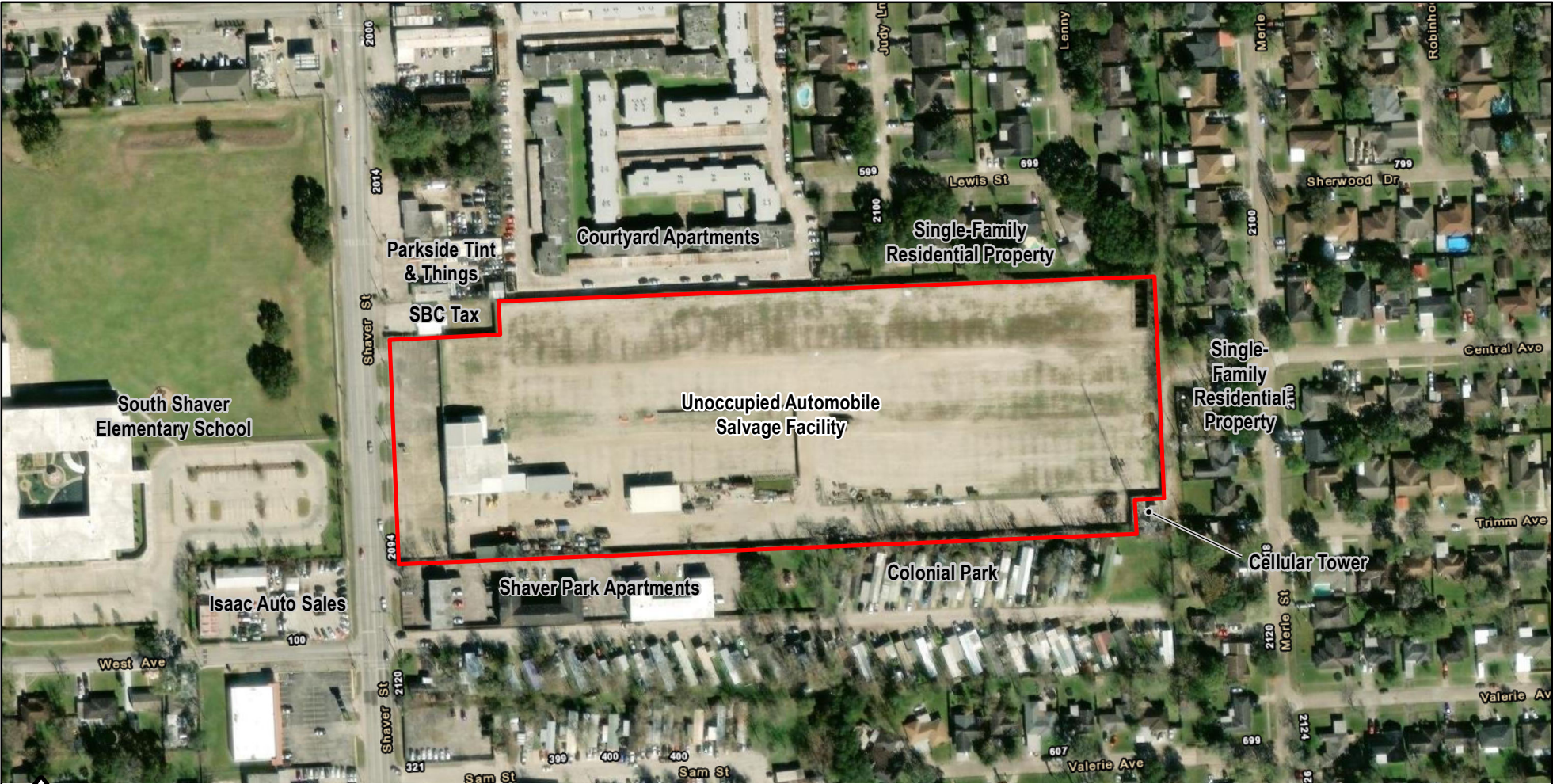


Location Map




Location: 2133 Shaver Street
Pasadena, Texas 77502
Harris County

Location: 2133 Shaver Street
Pasadena, Texas 77502
Harris County



SITE SKETCH - 2022 Aerial Imagery

 Subject Property



Storage Canopy at East exterior of onsite building.



Storage Canopy at Southwest corner of Subject.



Office Building



Storm water drain in parking lot at West portion of Subject.



South exterior of onsite Building.



Diesel powered Generator at West property boundary.



Generator along South exterior of onsite Building.



Interior of maintenance room in onsite Building.



Above Hydraulic Lift.

