



## DISCOVER UNMATCHED ELEGANCE AT THE GEORGETOWN BUILDING FOR SALE IN PROSPECTOR

PROSPECTOR 2041 SIDEWINDER DRIVE | PARK CITY, UTAH 84060

FOR SALE: \$3,350,000  
FOR LEASE: \$39/SF NNN

**KATIE WILKING** CCIM, MRED  
435 640-4964  
katie@wswcommercial.com

**JILL CAMPBELL**  
310-600-0338  
jill@jcparkcity.com

**BERKSHIRE  
HATHAWAY** | UTAH  
HOMESERVICES | PROPERTIES

COMMERCIAL DIVISION

© 2024 BHH Affiliates, LLC. An independently owned and operated franchisee of BHH Affiliates, LLC. Berkshire Hathaway HomeServices and the Berkshire Hathaway HomeServices symbol are registered service marks of Columbia Insurance Company, a Berkshire Hathaway affiliate. Equal Housing Opportunity. Information not verified or guaranteed. Berkshire Hathaway HomeServices and/or its representatives do not warrant or guarantee this information. Information herein was provided by Owner/Seller. Lessee/Purchaser is responsible to confirm any information considered a factor in a decision to lease or purchase.



# THE GEORGETOWN BUILDING

PROSPECTOR 2041 SIDEWINDER DRIVE | PARK CITY, UTAH 84060

Welcome to The Georgetown Building, where modern luxury meets versatile functionality. Recently remodeled, this building is unparalleled in Prospector Square. This exceptional property is designed to impress and inspire

- **Stunning Renovation:**
  - Experience a fresh, contemporary interior with high-end finishes and thoughtful design elements throughout.
- **Versatile Space:**
  - Perfectly suited for corporate meetings, workshops, or networking events, with flexible layouts to accommodate any occasion
  - Exceptional location for a corporate headquarters location
- **Prime Location:**
  - Nestled in the heart of Park City's vibrant Prospector Square business district, ensuring easy access for all your guests. Surrounded by restaurants, coffee shops, local businesses, daily wants are only steps away.
  - Walking distance to the bike and hike trails, Silver Mountain Sports Club, and the Rail-Trail (26 mile non-motorized byway)
- **Zoned for Success:**
  - Located in the city's General Commercial zone, offering endless possibilities for mixed use business ventures and creative functions.
  - General Commercial Zone: <https://shorturl.at/6wJ8K>
- **Ample Parking/Access:**
  - Enjoy the convenience of abundant parking in the common PSPOA parking lots, street parking, and on the Park City bus route
  - Easy access from both Hwy 224 and 248
- **Outdoor Spaces:**
  - Take advantage of stunning mountain views and fresh air on our spacious decks, ideal for receptions or breaks in your schedule.



# PROPERTY PHOTOS

PROSPECTOR 2041 SIDEWINDER DRIVE | PARK CITY, UTAH 84060





# PROPERTY PHOTOS

PROSPECTOR 2041 SIDEWINDER DRIVE | PARK CITY, UTAH 84060



# PROPERTY PHOTOS

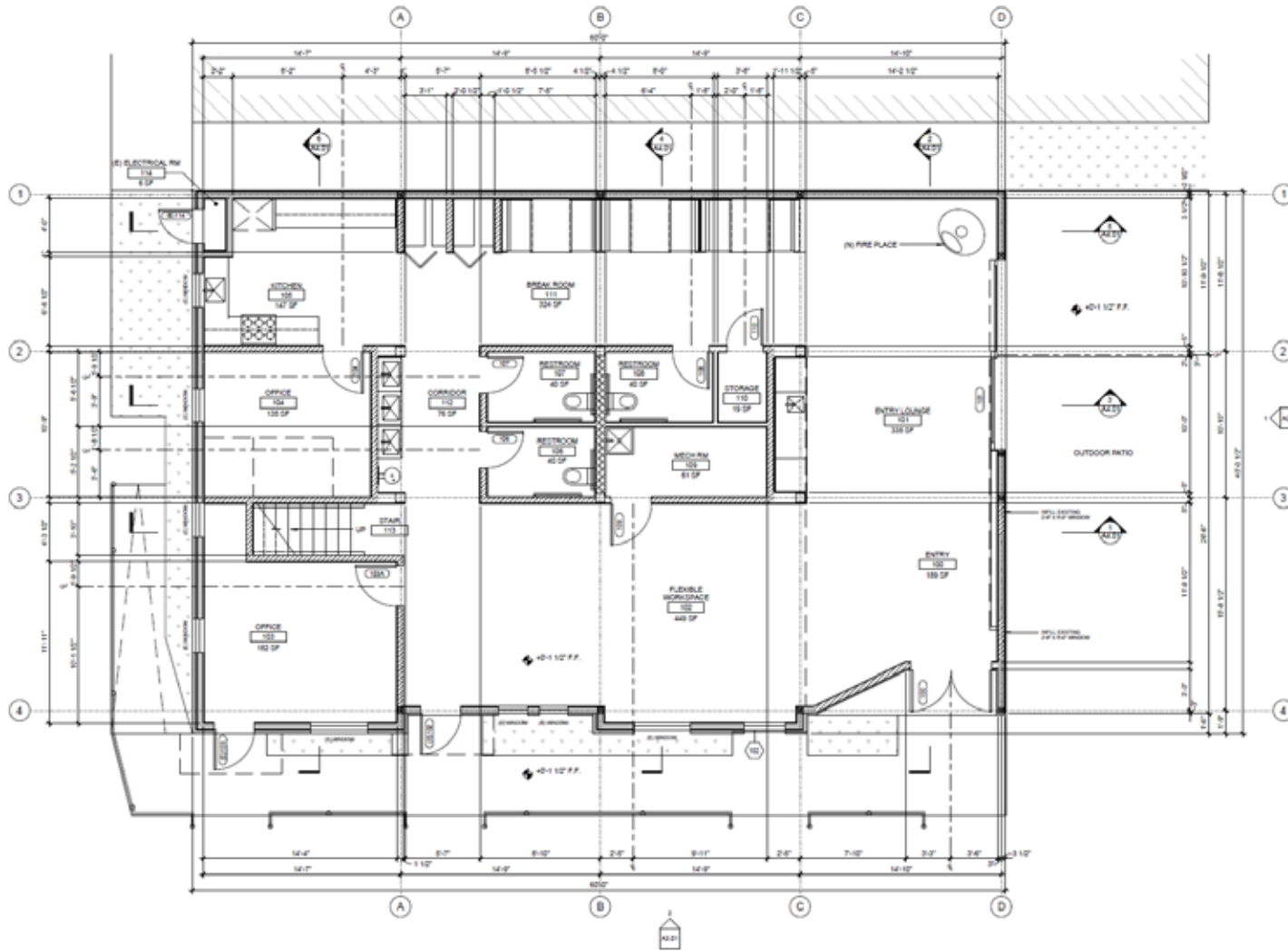
PROSPECTOR 2041 SIDEWINDER DRIVE | PARK CITY, UTAH 84060





# FLOOR PLAN

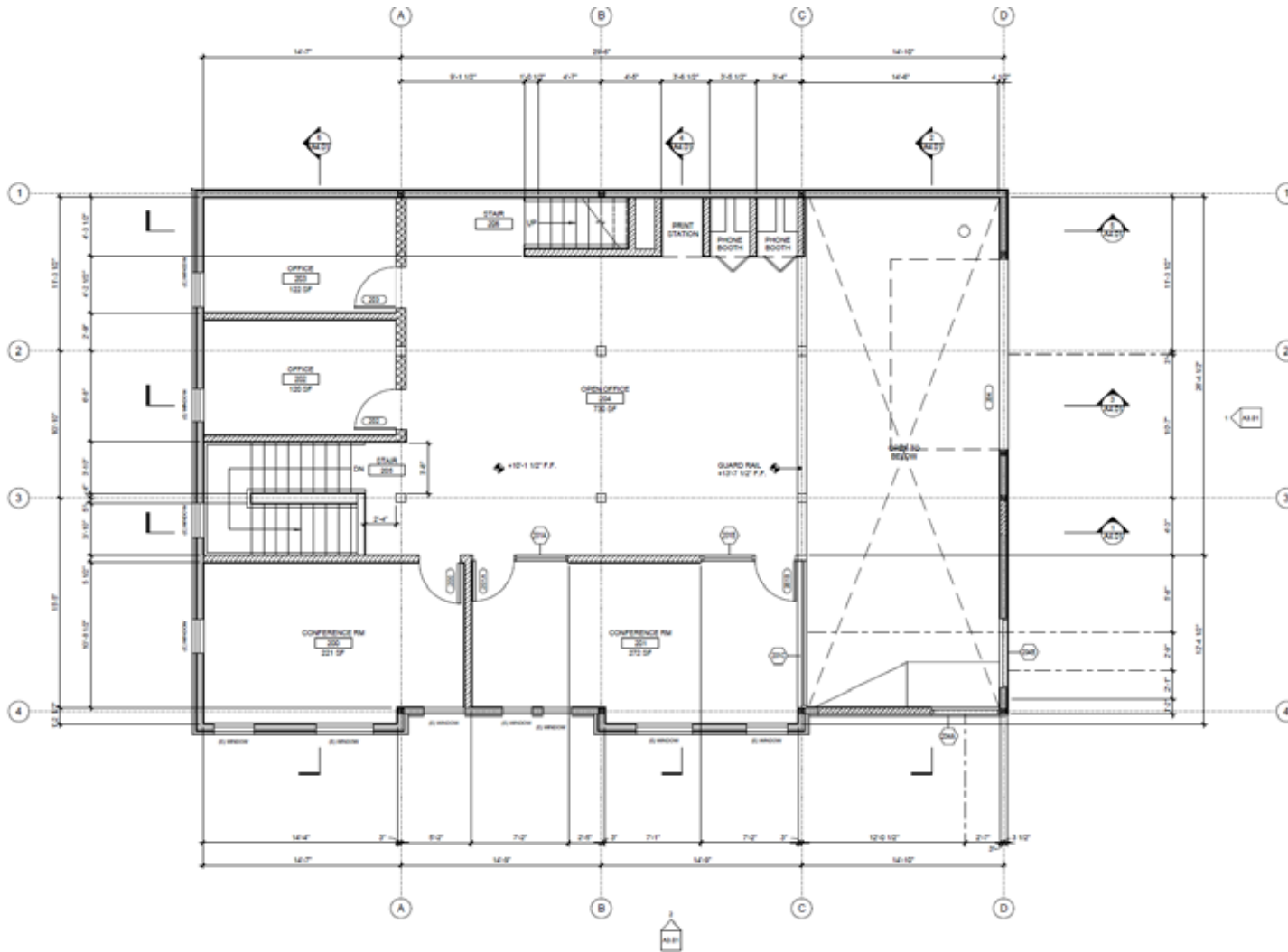
PROSPECTOR 2041 SIDEWINDER DRIVE | PARK CITY, UTAH 84060



FIRST LEVEL

# FLOOR PLAN

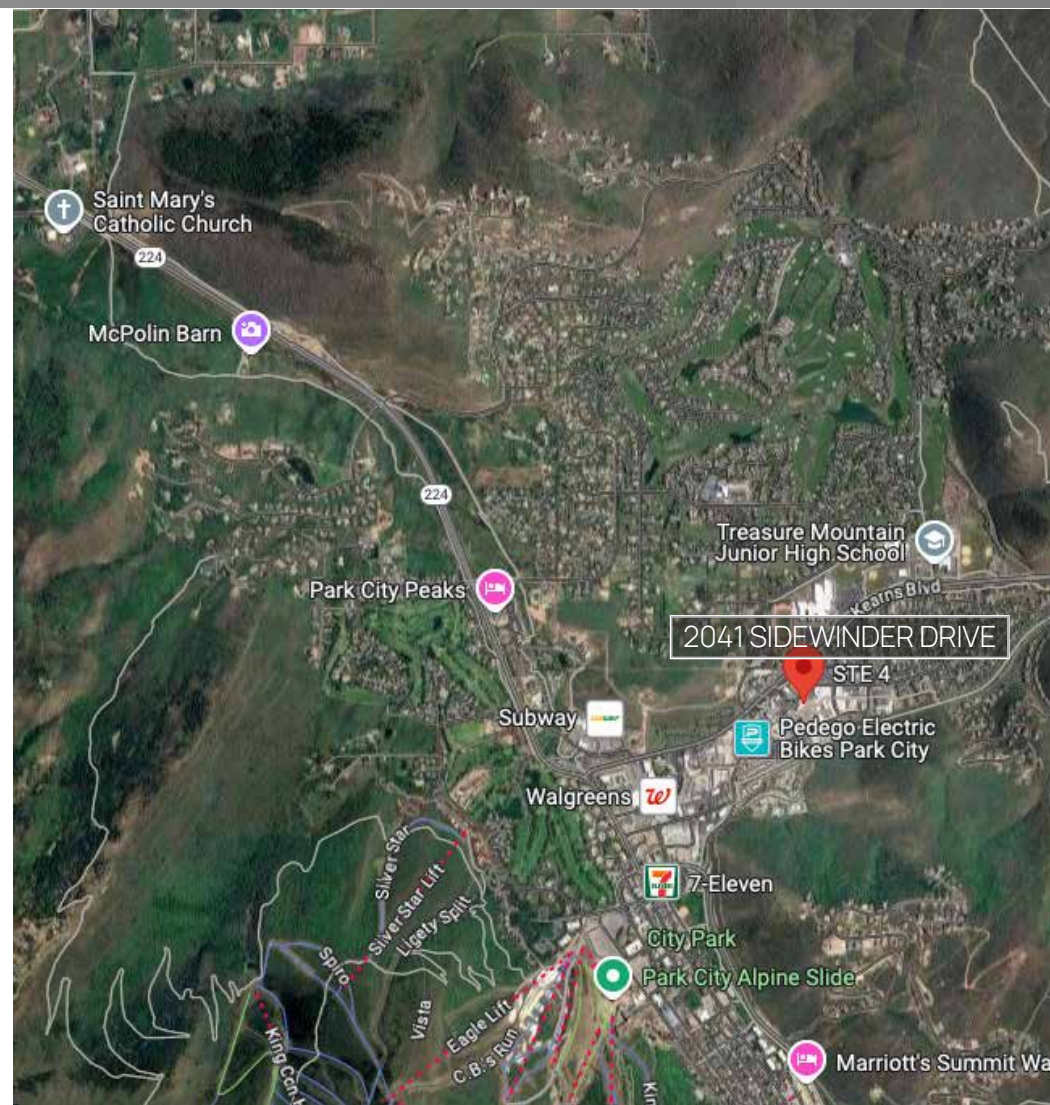
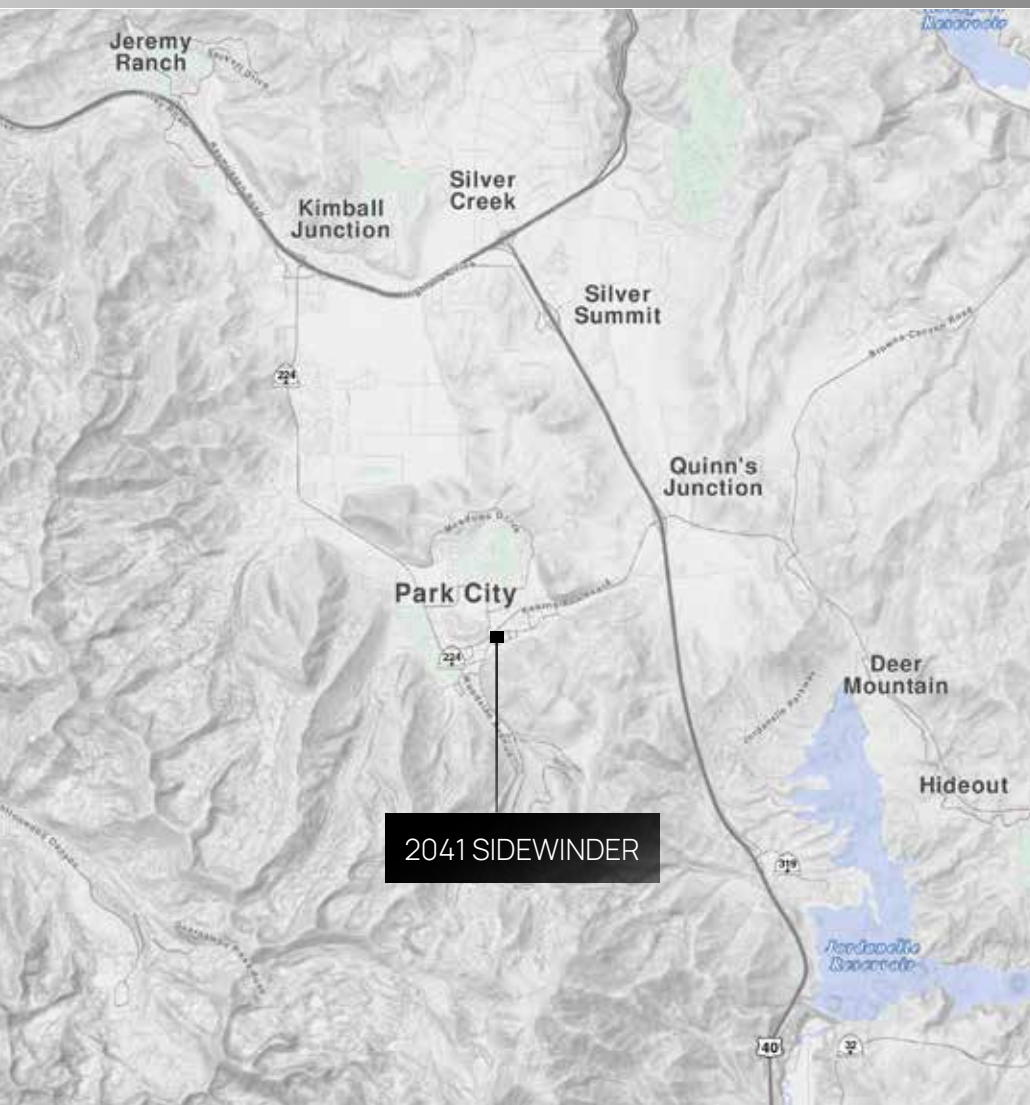
PROSPECTOR 2041 SIDEWINDER DRIVE | PARK CITY, UTAH 84060



SECOND LEVEL

# LOCATION

PROSPECTOR 2041 SIDEWINDER DRIVE | PARK CITY, UTAH 84060







CONTACT US FOR MORE INFORMATION OR TO ARRANGE A TOUR.

**KATIE WILKING** CCIM, MRED  
435 640-4964  
katie@swcommercial.com

**JILL CAMPBELL**  
310-600-0338  
jill@jcparkcity.com

**BERKSHIRE  
HATHAWAY** | UTAH  
HOMESERVICES | PROPERTIES

COMMERCIAL DIVISION

© 2024 BHH Affiliates, LLC. An independently owned and operated franchisee of BHH Affiliates, LLC. Berkshire Hathaway HomeServices and the Berkshire Hathaway HomeServices symbol are registered service marks of Columbia Insurance Company, a Berkshire Hathaway affiliate. Equal Housing Opportunity. Information not verified or guaranteed. Berkshire Hathaway HomeServices and/or its representatives do not warrant or guarantee this information. Information herein was provided by Owner/Seller. Lessee/Purchaser is responsible to confirm any information considered a factor in a decision to lease or purchase.