

## Contents

1322 Fremont St.  
Las Vegas, NV 89101

---

**01**  
Executive Summary

---

---

**05**  
Room Profiles

---

**08**  
Aerials & Plans

**14**  
Market Overview

## Investment Team

Point of contact



**Cathy Jones, CPA, SIOR, CCIM**  
Executive Vice President  
702.595.8765  
cjones@logicCRE.com  
BS.0056010

Point of contact



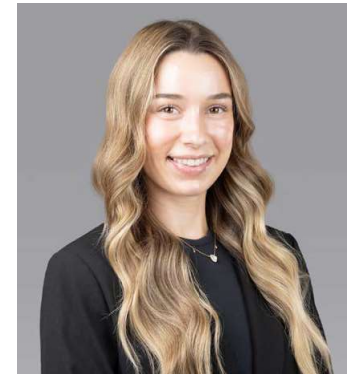
**Blaze Katz**  
Associate  
702.690.0407  
bkatz@logicCRE.com  
S.0195070



**Paul Miachika**  
Executive Vice President  
602.814.0661  
pmiachika@logicCRE.com  
S.0184612



**Karim Chatoor, CCIM**  
Senior Associate  
248.525.1423  
kchatoor@logicCRE.com  
BS.0146002



**Allyson Weber**  
Team Strategist  
702.278.8865  
aweber@logicCRE.com  
S.0199573

---

L O G I C

3900 S. Hualapai Way  
Suite 200  
Las Vegas, NV 89147

702.888.3500  
www.LogicCRE.com