

For
Lease

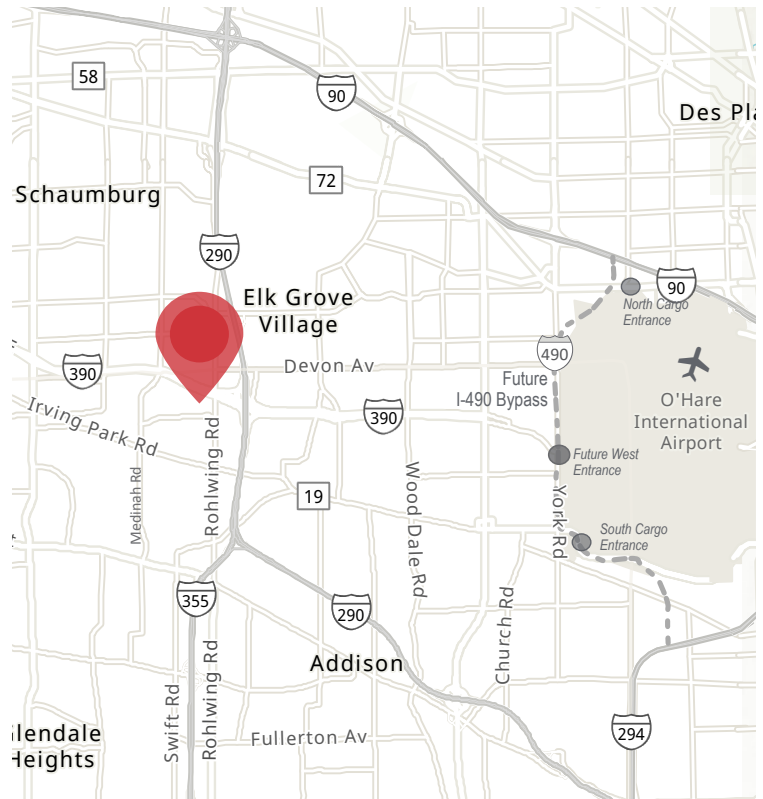
38,956 SF
Industrial Unit
Divisible to 19,478 SF

OWNED & MANAGED BY



1442-1456 Norwood Ave
ITASCA, ILLINOIS

AVAILABLE	38,956 SF
DIVISIBLE	19,478 SF
BUILDING SIZE	102,617 SF
CLEAR HEIGHT	16'
OFFICE AREA	4,692 SF
DOCKS	4 INTERIOR DOCKS
DRIVE-IN DOORS	3
TAX, CAM, INS	\$2.05 PSF
LEASE RATE	SUBJECT TO OFFER
COMMENTS	Located off full interchanges at I-290 and IL 390 (Elgin-O'Hare Expwy) Minutes from O'Hare Airport

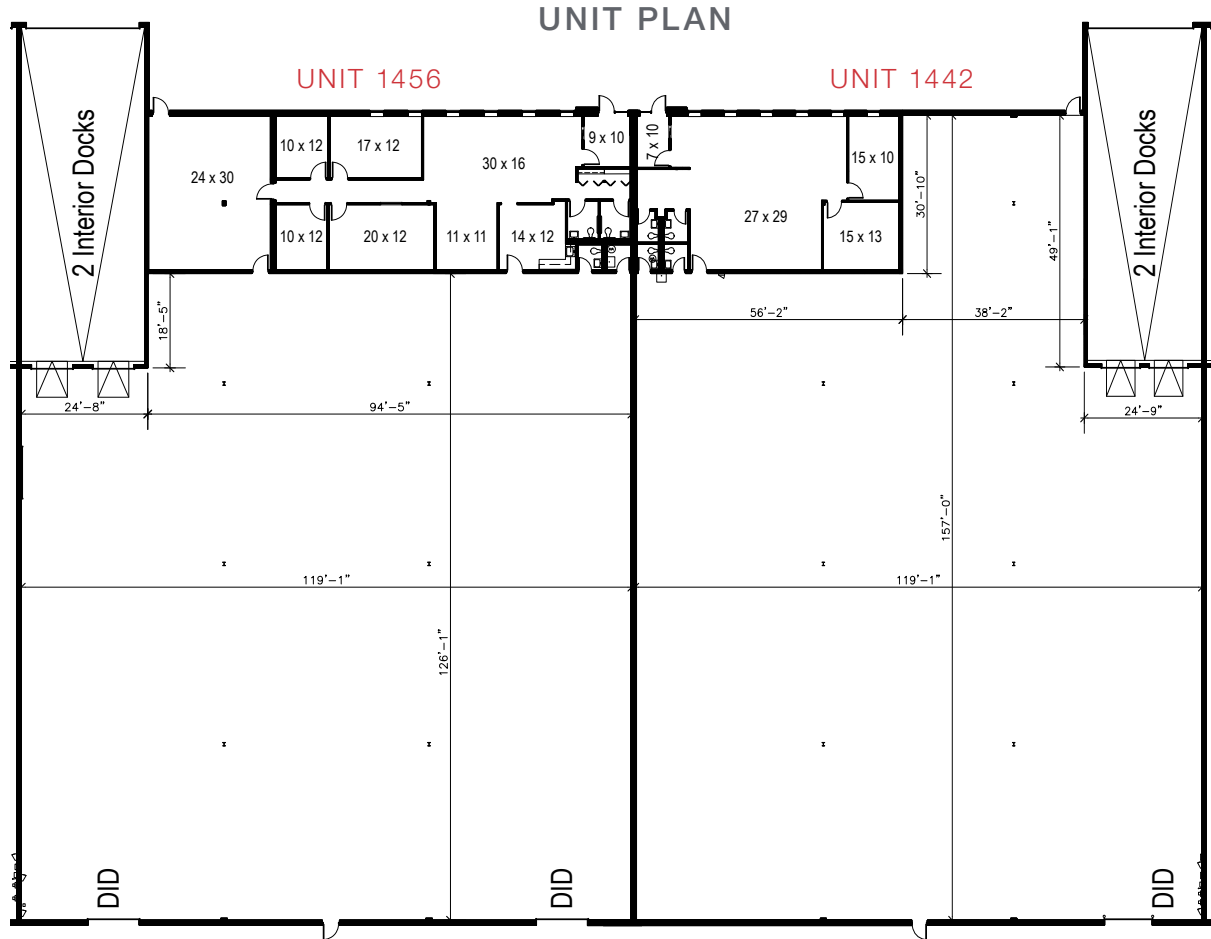


Contact

Terry Herlihy
+1 630 693 0664
therlihy@hiffman.com

Mark Baumhart, CCIM
+1 630 691 0550
mbaumhart@hiffman.com

One Oakbrook Terrace Suite 400
Oakbrook Terrace, Illinois 60181
+1 630 932 1234
hiffman.com

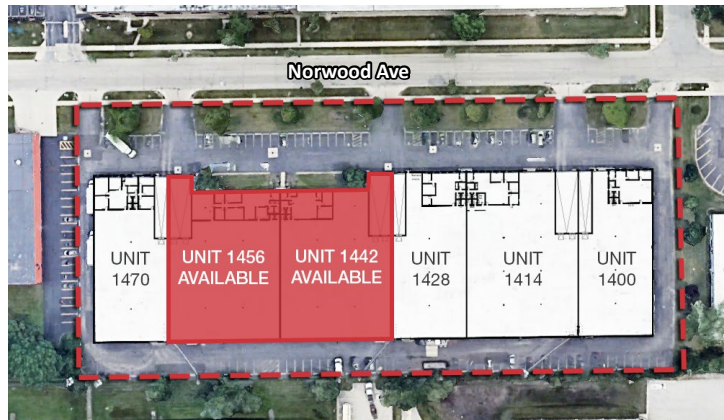


UNIT 1456

19,478 SF
 2,949 SF Office
 2 Interior Docks
 2 Drive-In Doors

Power

150A, 3-phase,
 4-wire, 120/240V
 200A, 3-phase,
 4-wire, 120/240V



UNIT 1442

19,478 SF
 1,743 SF Office
 2 Interior Docks
 1 Drive-In Door

Power

400A, 3-phase,
 4-wire, 120/240V,
 high leg B phase
 200A, 3-phase,
 4-wire, 120/240V
 150A, 3-phase,
 4-wire, 120/240V

OWNED & MANAGED BY



One Oakbrook Terrace
 Suite 400
 Oakbrook Terrace, Illinois 60181
 +1 630 932 1234

hiffman.com