

**5353 N. FEDERAL HIGHWAY  
FORT LAUDERDALE**

**Visibility . Access**



**LEASED BY:**  **BLANCA**  
Licensed Real Estate Broker

**CHRISTIE CHAMBERS** | [christie.chambers@blancacre.com](mailto:christie.chambers@blancacre.com) | 305.615.1866

**OWNED &  
MANAGED BY:**  **ShareMD**



## Medical and professional work environment.

**5353 N. Federal Highway, Fort Lauderdale** is a premier medical and professional office building strategically located in the heart of Fort Lauderdale's highly accessible commercial corridor. Owned and operated by SharedMD, this modern facility offers a superior setting for healthcare providers and business professionals alike.

This well-maintained, multi-tenant building features:

- Flexible medical and office suites
- Ample on-site parking for patients and staff
- On-grade accessible entrances
- Updated common areas and professional finishes
- Prominent visibility along North Federal Highway (U.S. 1)
- Close proximity to Holy Cross Health (4 minutes)
- Experience Medical Office ownership group
- Building signage opportunity

## Facts

Address:	5353 N. Federal Highway, Fort Lauderdale, FL 33308
Use:	Medical and Professional Spaces
RBA:	28,177 SF
Parking:	4.0 / 1,000
Area:	<ul style="list-style-type: none"><li>• Just minutes away Holy Cross and Imperial Point Hospitals</li><li>• 85 WalkScore - Very Walkable</li><li>• Close access to I-95</li><li>• Traffic count on NE 50th Street &amp; NE 22nd Avenue 39,973 Vehicles Per Hour</li></ul>

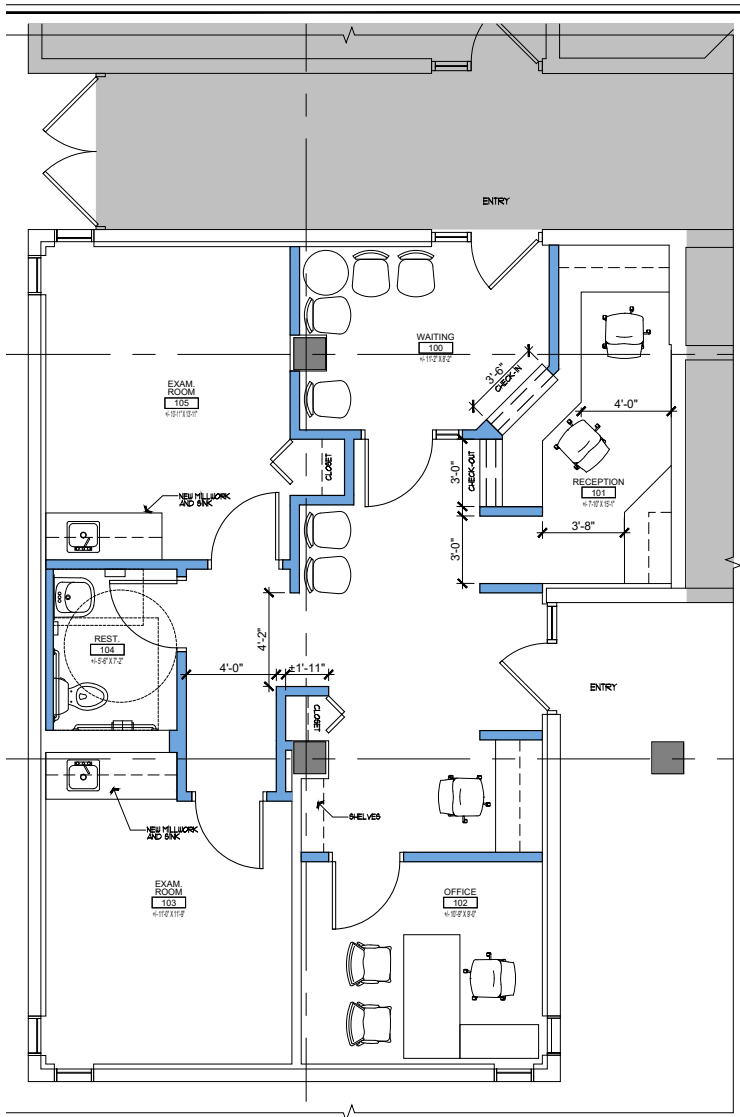
# Suite 100

1,125 RSF

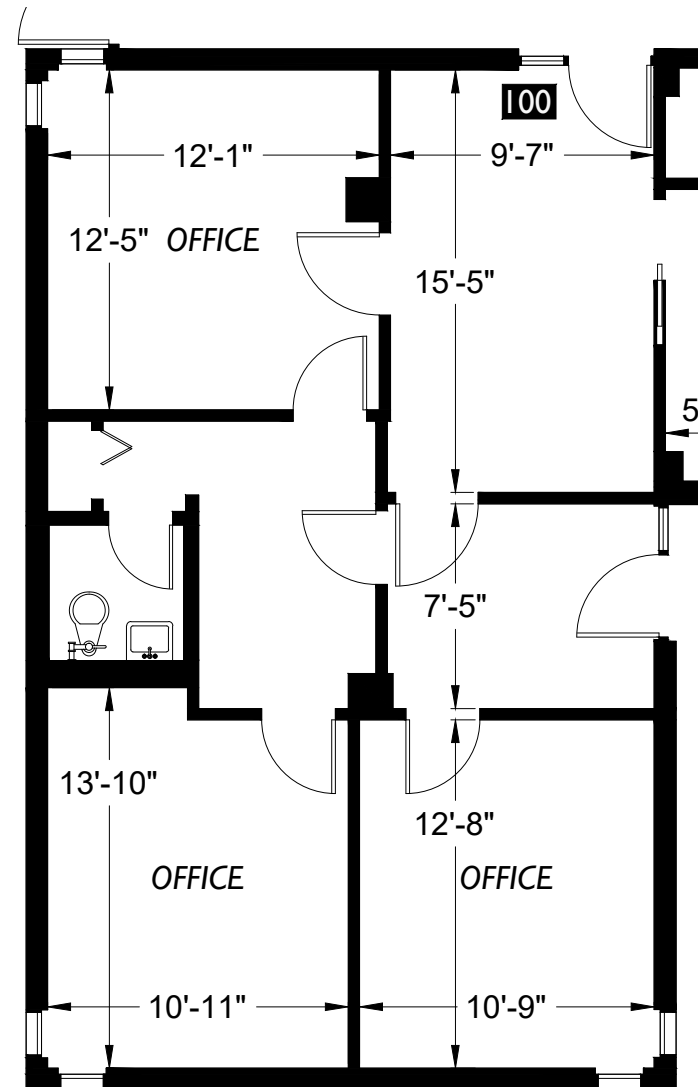


[Click Here For Virtual Tour](#)

## Medical Office Test Fit



## Current Floor Plan



# Suite 204

1,034 RSF

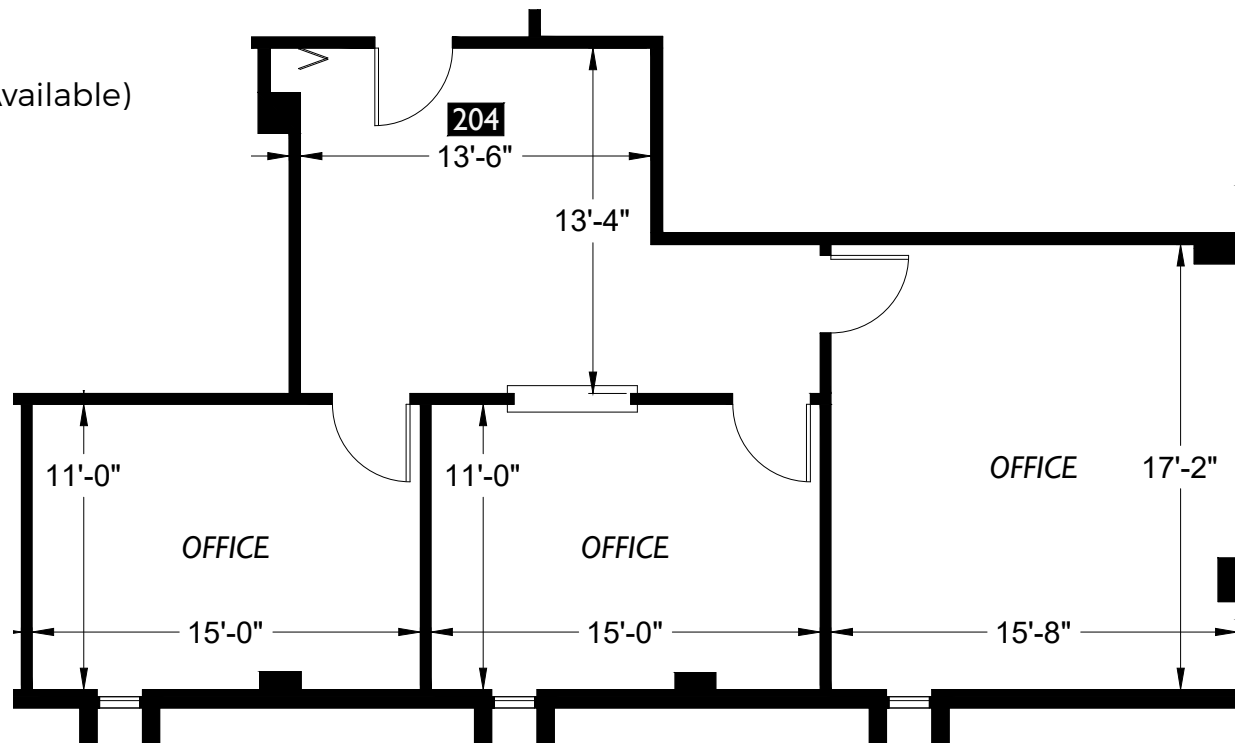


[Click Here For Virtual Tour](#)



## Current Floor Plan

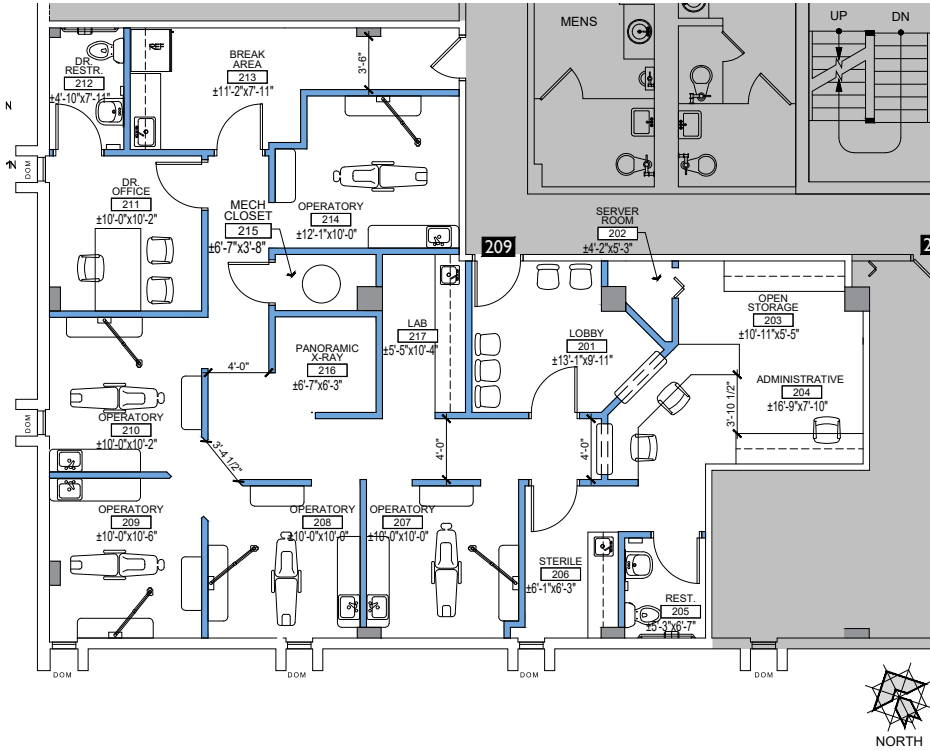
(Medical Office Test Fit Available)



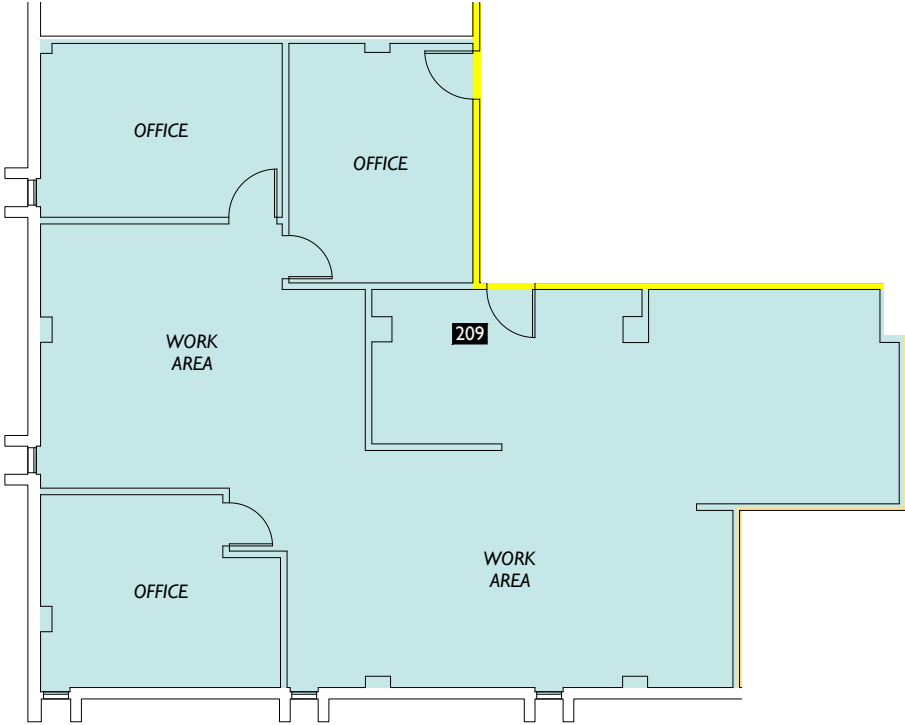
# Suite 209

1,959 RSF

Medical Office Test Fit



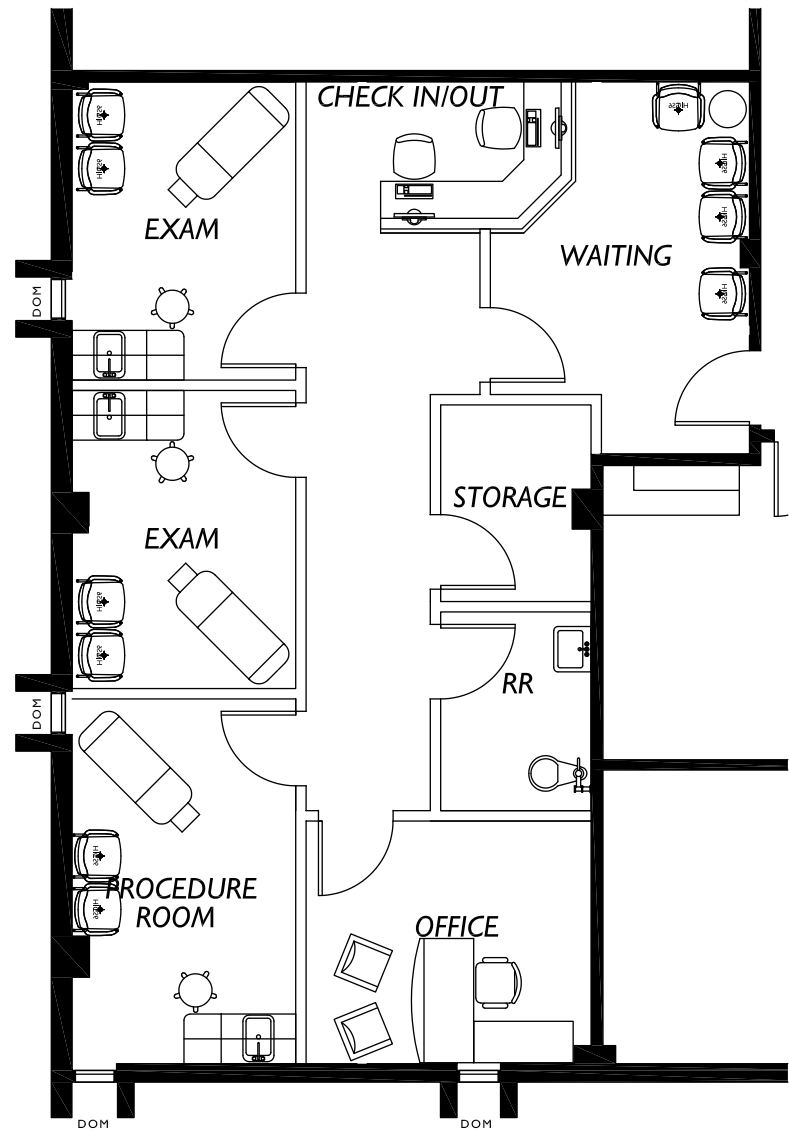
Current Floor Plan



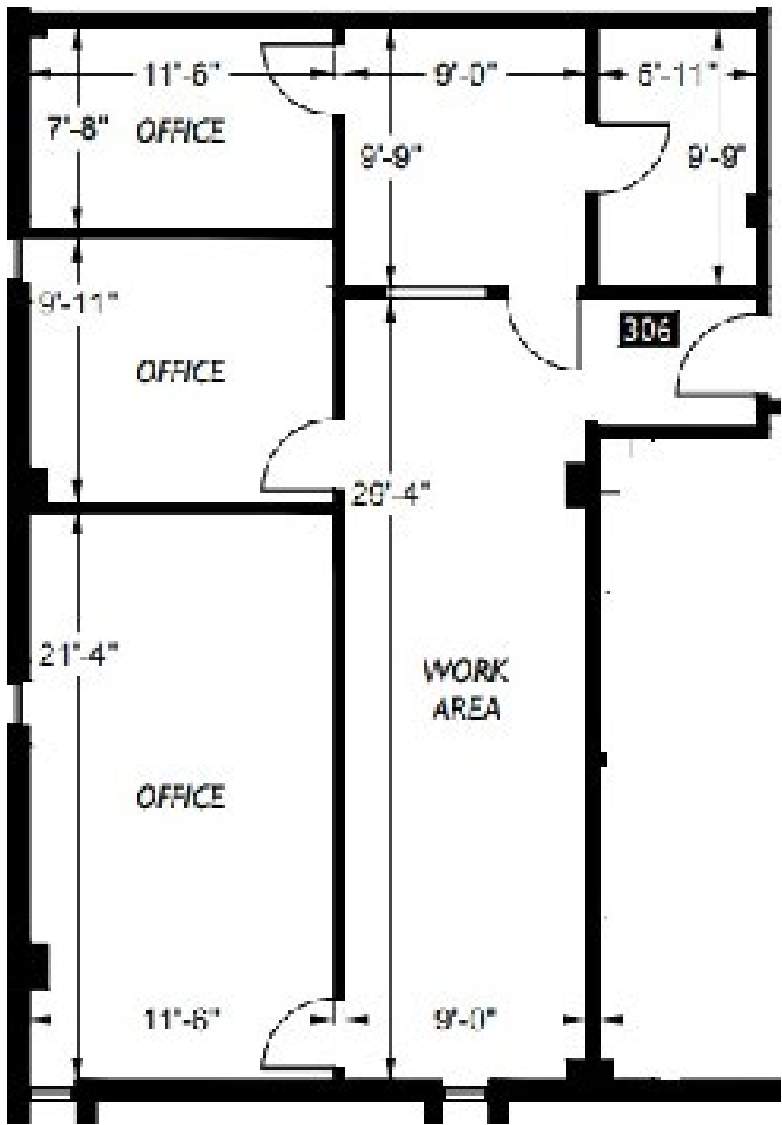
**Suite 306**  
900 RSF

 [Click Here For Virtual Tour](#)

**Medical Office Test Fit**



**Current Floor Plan**



# Suite 402

1,357 RSF



[Click Here For Virtual Tour](#)



**5353** N. FEDERAL HIGHWAY, FORT LAUDERDALE

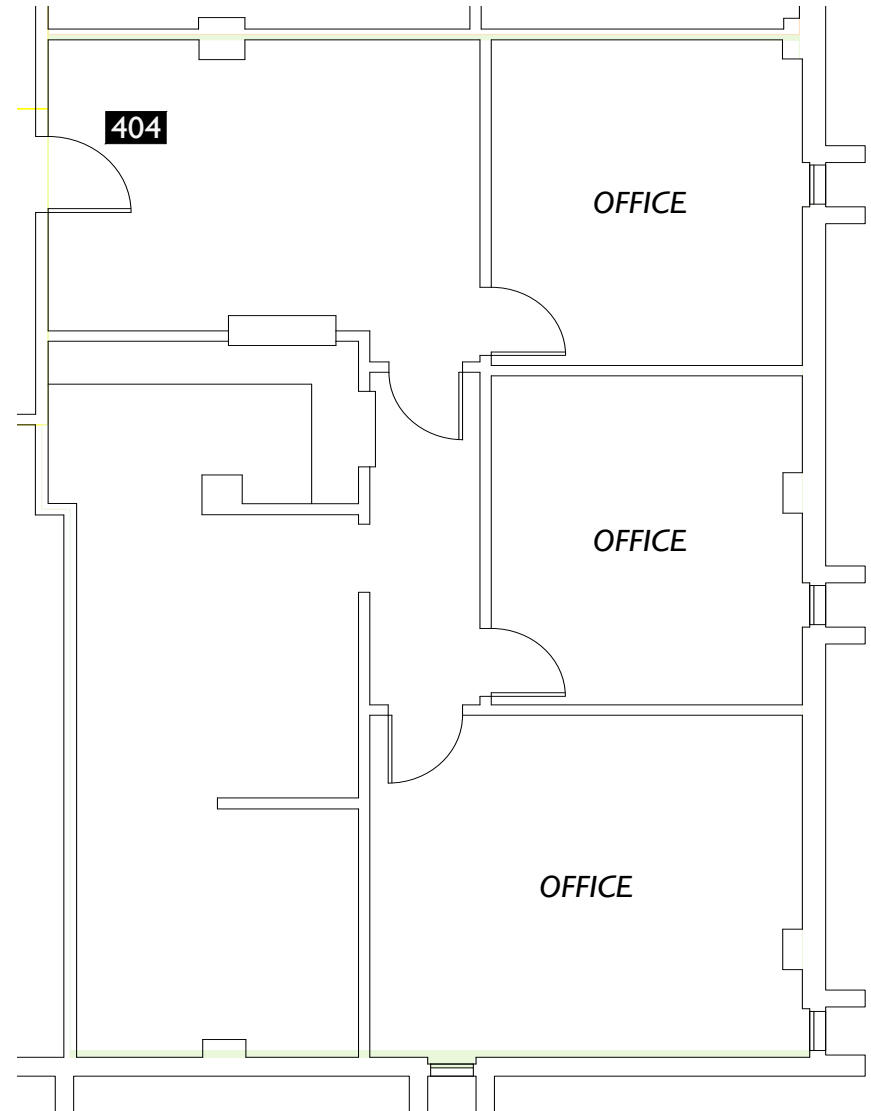
[blancacre.com](http://blancacre.com)

# Suite 404

1,315 RSF



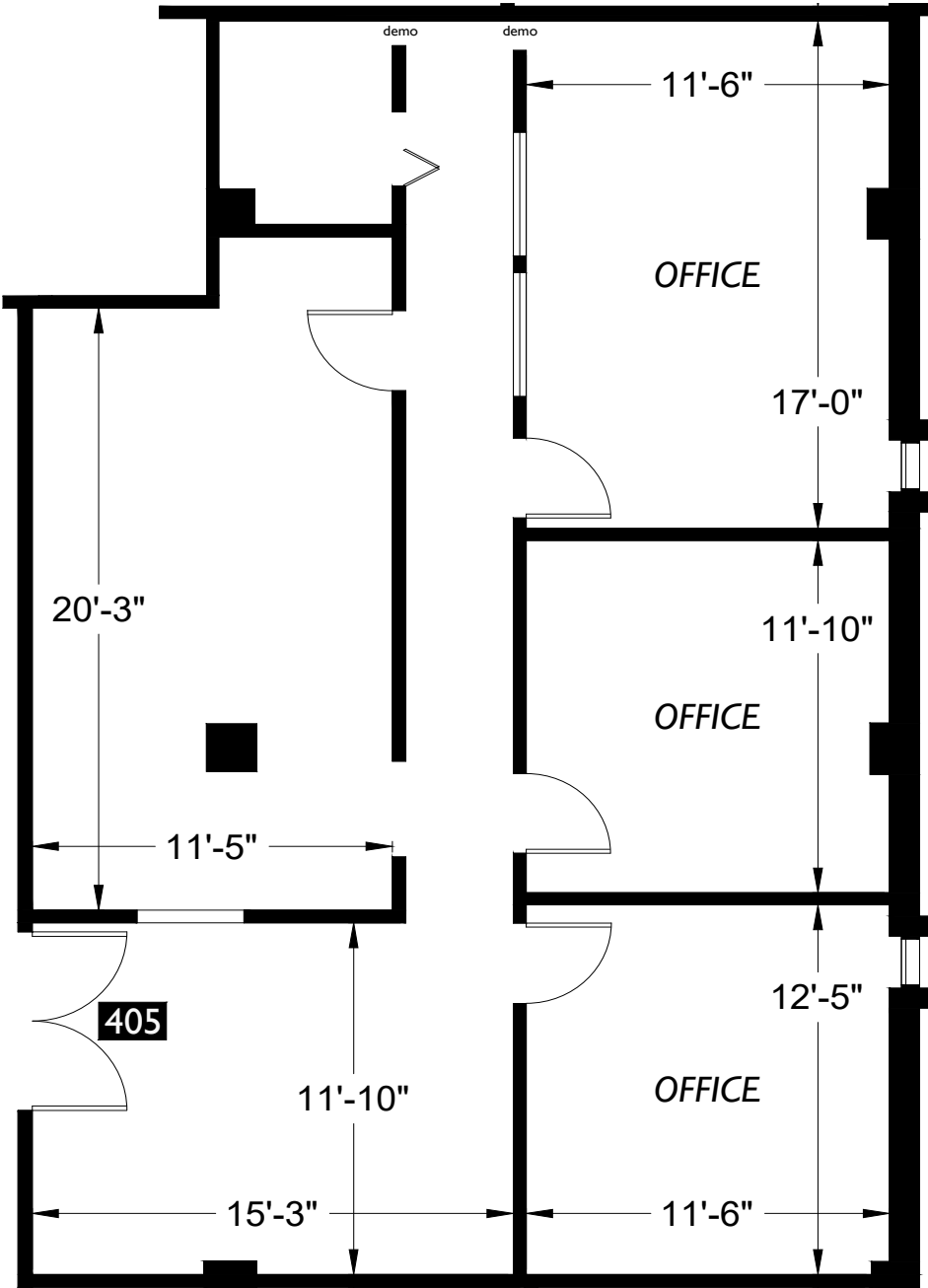
[Click Here For Virtual Tour](#)



**Suite 405**  
1,749RSF



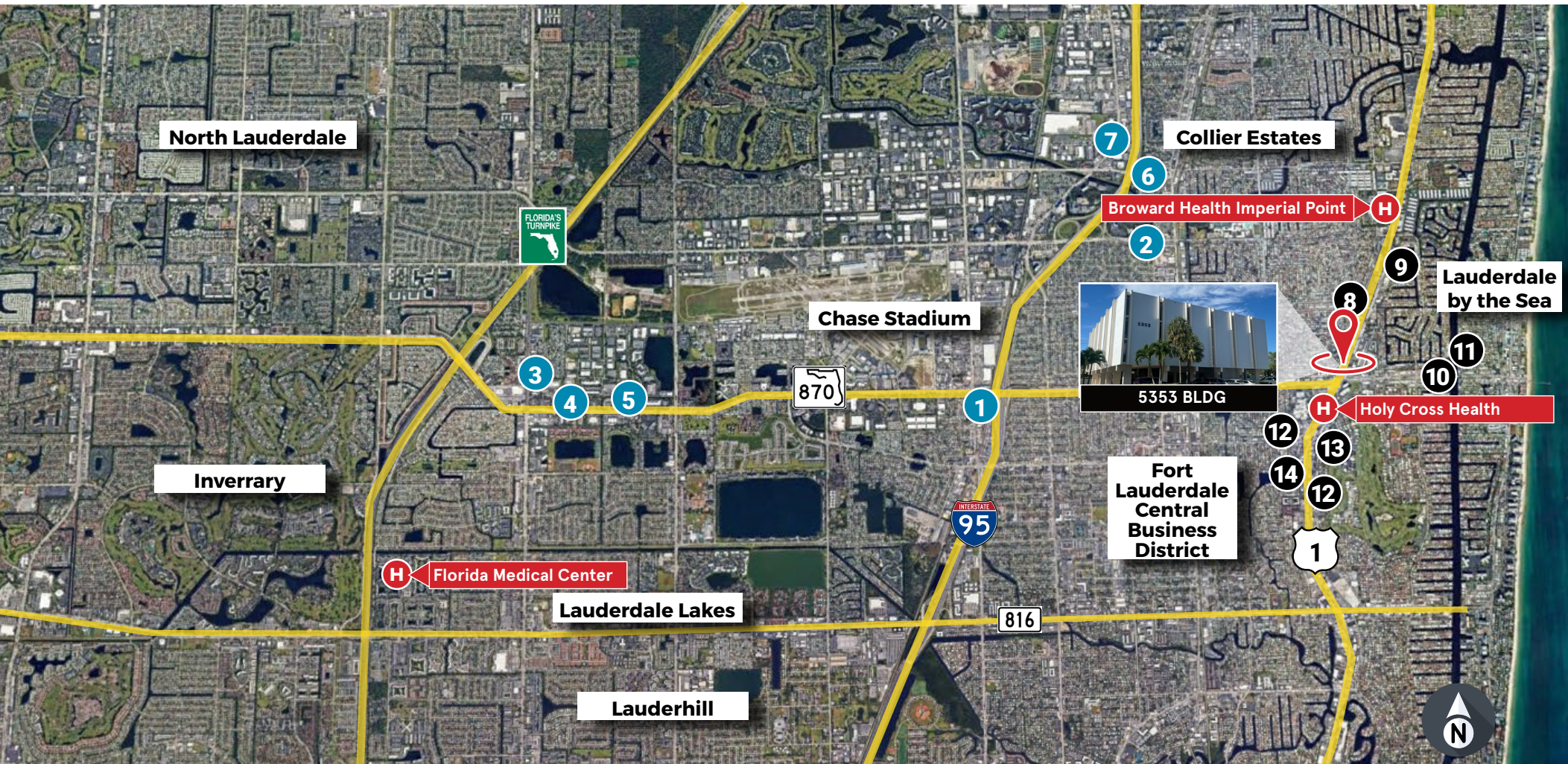
[Click Here For Virtual Tour](#)



# Strategic access and visibility.

5353 N. Federal Highway, Fort Lauderdale

Perfectly positioned between Holy Cross Hospital and Imperial Point Hospital just off Federal Highway, 5353 BLDG offers convenience and visibility.



## DRIVE TIMES TO CLOSET LOCATIONS

Airport: 20 Minutes  
Hospital: 3 Minutes  
Hotel: 10 Minutes  
Highway: 15 Minutes

## HOSPITALS

Holy Cross Health  
Broward Health Imperial Point  
Florida Medical Center

## HOTELS

1. Fort Lauderdale Grand Hotel
2. Hampton Inn Fort Lauderdale
3. Plaza Hotel Fort Lauderdale
4. Extended Stay America Fort Lauderdale
5. Fort Lauderdale Marriot North
6. Westin Hotel Fort Lauderdale
7. Fort Lauderdale Marriot North

## RESTAURANTS

8. Casa Frida Mexican Cuisine
9. Olive Garden
10. Klauz Restaurant
11. Blue Moon Fish Co
12. Mom's Kitchen
13. Ferdo's Grill Middle Eastern
14. La Bamba Mexican
15. Eatapas

**5353 N. FEDERAL HIGHWAY, FORT LAUDERDALE**

[blancacre.com](http://blancacre.com)

For Leasing Information

# CONTACT:

## CHRISTIE CHAMBERS

christie.chambers@blancacre.com  
305.615.1866



**blancacre.com**  
1450 Brickell, Suite 2400  
Miami, FL 33133

OWNED & MANAGED BY:



*Disclaimer: Blanca Commercial Real Estate is a Licensed Real Estate Broker. No warranty of representation, expressed or implied, is made as to the accuracy of the information contained herein, and same is submitted subject to errors, omissions, change of price rental or other conditions, withdrawal without notice, and to any special conditions imposed by our clients.*