

6 ACRE LAND SITE FOR SALE



PRICE: \$655,000.00

2211 S MIDKIFF RD

Midland, TX 79701

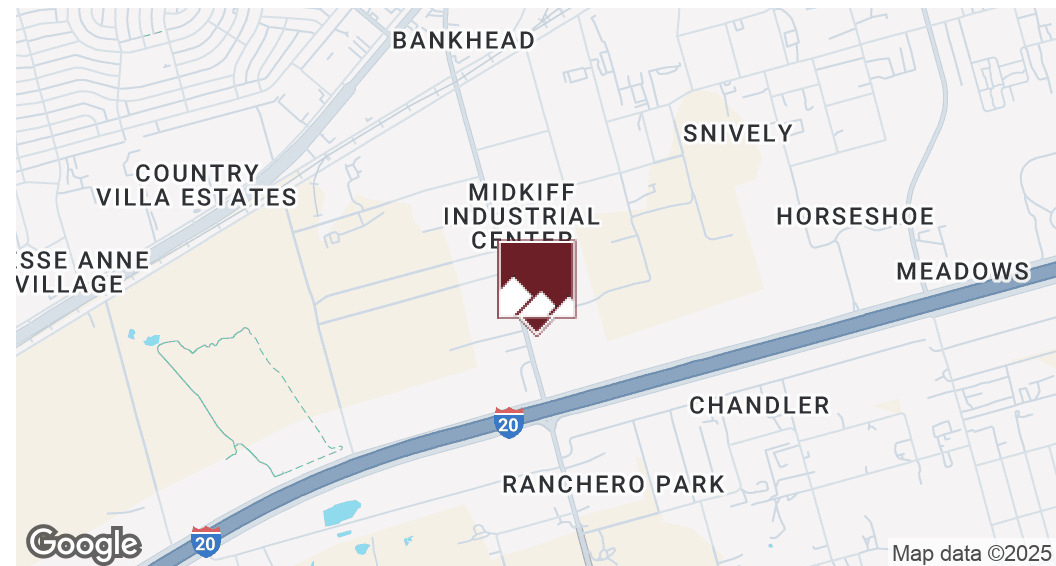
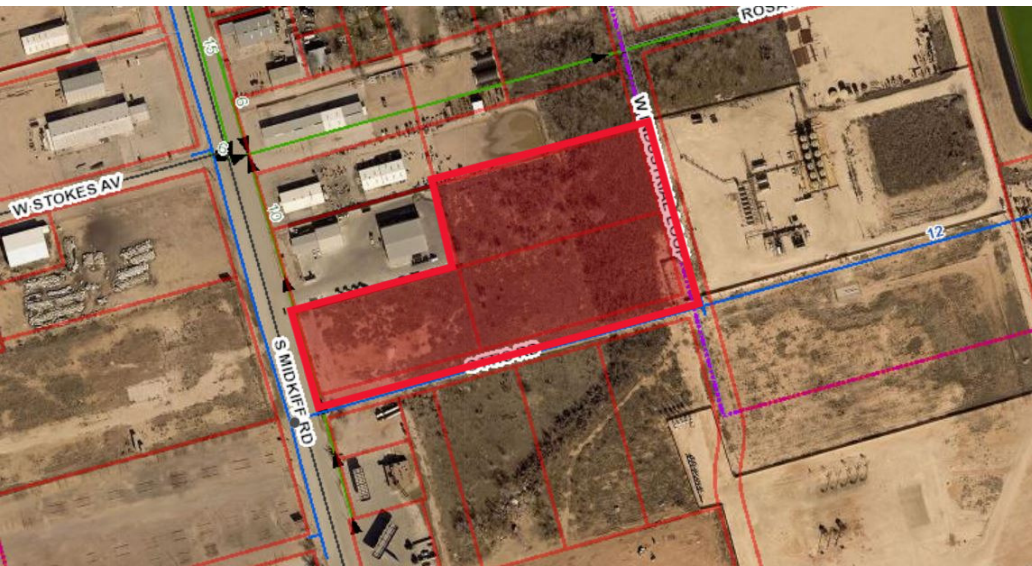
Wes Gotcher
Broker | President
432.682.2510
wes@moriahrealestate.com

Trey Dennis
Broker
432.236.7500
trey@moriahrealestate.com

PRICE: \$655,000.00

2211 S MIDKIFF RD

Midland, TX 79701



Property Summary

Situated in a growing commercial corridor, this prime site offers a compelling opportunity for land investors and commercial developers seeking a high-traffic location with strong infrastructure potential. The property provides excellent access and visibility, making it ideal for future development.

Offering Summary

Suggested List Price:	\$655,000
Lot Size:	6.942 Acres

Location Description

This 6-acre parcel of raw land, located at 2211 S Midkiff Rd in Midland, TX, sits within city limits and just minutes from Interstate 20. The property offers approximately 250 feet of frontage along Midkiff Road.

Property Highlights

- City Utilities: Water Near-by
- Zoning: C, Commercial
- Midkiff Road Frontage: 250'
- Floodway or Floodplain: No
- **Highest and Best Use:** Commercial Development

Wes Gotcher

Broker | President
432.682.2510
wes@moriahrealstate.com

Trey Dennis

Broker
432.236.7500
trey@moriahrealstate.com



PRICE: \$655,000.00

2211 S MIDKIFF RD

Midland, TX 79701



Wes Gotcher

Broker | President

432.682.2510

wes@moriahrealstate.com

Trey Dennis

Broker

432.236.7500

trey@moriahrealstate.com

MORIAH
BROKERAGE SERVICES, LLC

PRICE: \$1,019,870.3

2211 S MIDKIFF RD

Midland, TX 79701



Wes Gotcher

Broker | President
432.682.2510
wes@moriahrealestate.com

Trey Dennis

Broker
432.236.7500
trey@moriahrealestate.com

MORIAH
BROKERAGE SERVICES, LLC

2211 S MIDKIFF RD

Midland, TX 79701

Contact Brokers:

Wes Gotcher

Broker | President

432.682.2510

wes@moriahrealestate.com

Trey Dennis

Broker

432.236.7500

trey@moriahrealestate.com



15 Smith Road, Suite 6004, Midland, TX 79705

432.682.2510 | moriahbrokerageservices.com