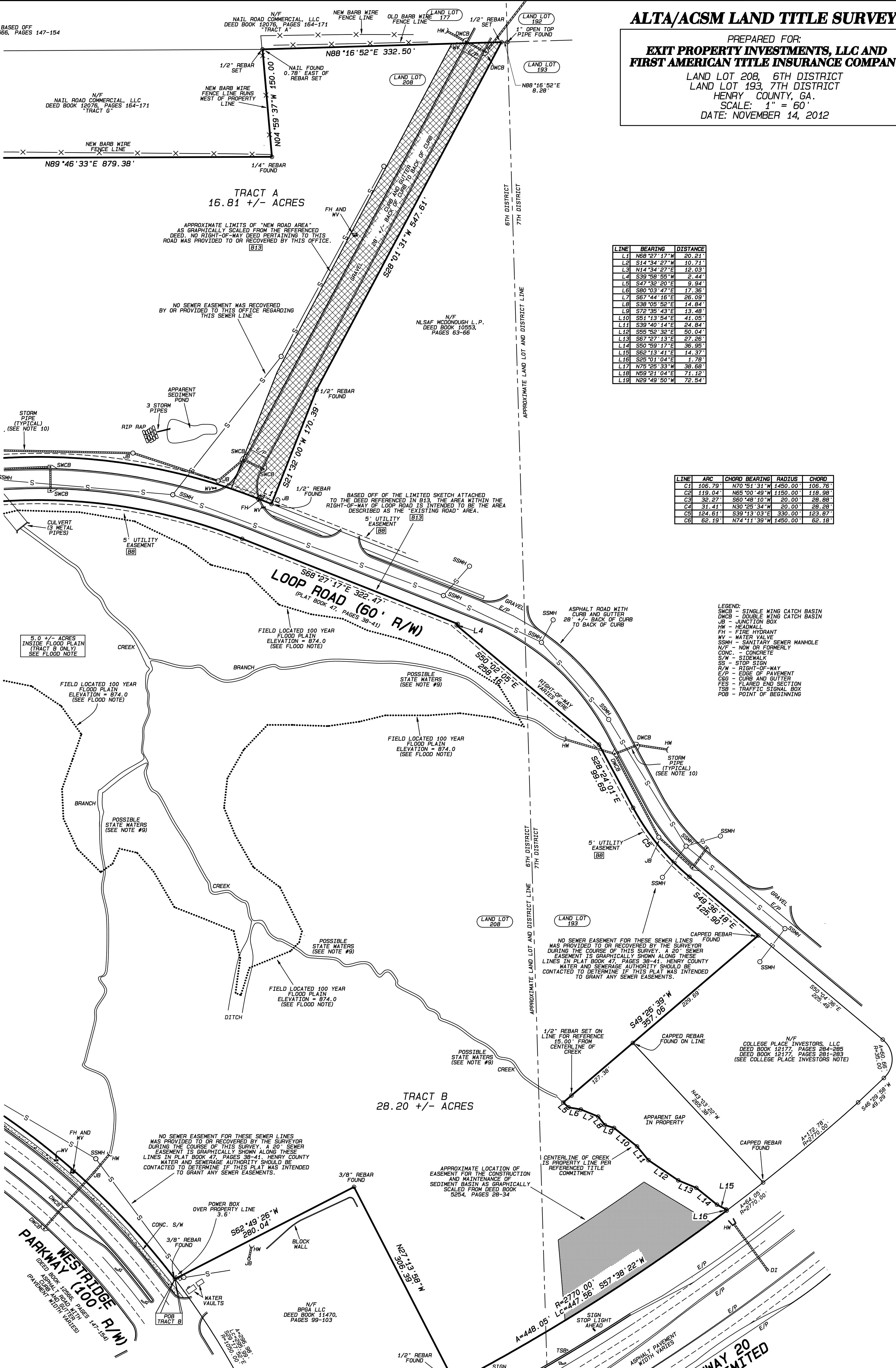


# ALTA/ACSM LAND TITLE SURVEY

PREPARED FOR:  
**EXIT PROPERTY INVESTMENTS, LLC AND  
 FIRST AMERICAN TITLE INSURANCE COMPANY**  
 LAND LOT 208, 6TH DISTRICT  
 LAND LOT 193, 7TH DISTRICT  
 HENRY COUNTY, GA.  
 SCALE: 1" = 60'  
 DATE: NOVEMBER 14, 2012

NORTH BASED OFF  
 DEED BOOK 12566, PAGES 147-154



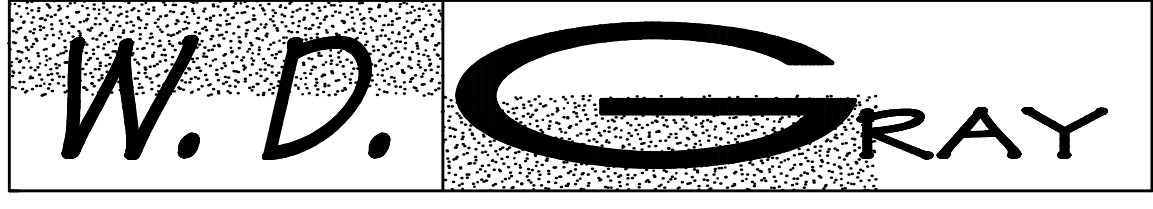
LINE	BEARING	DISTANCE
L1	N68°27'17"W	20.21'
L2	S14°34'27"W	10.71'
L3	N14°34'27"E	12.03'
L4	S39°58'55"W	2.44'
L5	S47°32'20"E	9.94'
L6	S80°10'47"E	17.36'
L7	S67°44'16"E	26.09'
L8	S38°05'52"E	14.84'
L9	S72°35'43"E	13.48'
L10	S51°13'54"E	41.05'
L11	S39°40'14"E	24.84'
L12	S35°52'32"E	50.04'
L13	S67°27'13"E	27.26'
L14	S50°59'17"E	36.95'
L15	S62°13'41"E	14.37'
L16	S25°01'04"E	1.78'
L17	N75°25'33"W	38.68'
L18	N59°21'04"E	71.12'
L19	N29°49'50"W	72.54'

LINE	ARC	CHORD	BEARING	RADIUS	CHORD
C1	106.79'	N70°51'31"W	1450.00'	106.76'	
C2	119.04'	N65°00'49"W	1150.00'	118.98'	
C3	32.27'	S60°48'10"W	20.00'	28.88'	
C4	31.41'	N30°25'34"W	20.00'	28.28'	
C5	124.61'	S39°13'03"E	330.00'	123.87'	
C6	62.19'	N74°11'39"W	1450.00'	62.18'	

LEGEND:  
 SWCB - SINGLE WING CATCH BASIN  
 DWCB - DOUBLE WING CATCH BASIN  
 JB - JUNCTION BOX  
 HW - HEADWALL  
 FH - FIRE HYDRANT  
 WV - WATER VALVE  
 SSMH - SANITARY SEWER MANHOLE  
 N/F - NOW OR FORMERLY  
 CONC. - CONCRETE  
 S/W - SIDEWALK  
 SS - STOP SIGN  
 R/W - RIGHT-OF-WAY  
 E/P - EDGE OF PAVEMENT  
 C&G - CURB AND GUTTER  
 FES - FLARED END SECTION  
 TSB - TRAFFIC SIGNAL BOX  
 POB - POINT OF BEGINNING

SEE SHEET 2

SEE SHEET 2



**W.D. GRAY AND ASSOCIATES, INC.**  
 Land Surveyors - Planners  
 150 Greencastle Road Suite B Tyrone, 30290  
 PH. 770-486-7552 Fax 770-486-0495

**GEORGIA HIGHWAY 20  
 (R/W VARIES - LIMITED  
 ACCESS HIGHWAY)**  
 (DEED BOOK 12566, PAGES 147-154)  
 (DEED BOOK 12564, PAGES 28-34)

