

31691 DEQUINDRE ROAD
MADISON HEIGHTS, MICHIGAN



**SIGNATURE
ASSOCIATES**
KNOW SIGNATURE | KNOW RESULTS

INDUSTRIAL FOR SALE
18,603 Square Feet Available



PROPERTY FEATURES

- 18,603 square feet available
- 16' clear height
- (3) 12x12 grade level doors, (1) truckwell
- Zoned Industrial
- Located on 2.24 acres with outside storage yard
- Heavy parking, and outside storage yard
- Main road building near I-75 and I-696
- 2-story offices which are connected to mezzanine
- New roof in 2018 with a 20-year warranty
- Perfect contractor yard
- Sale Price: \$2,050,000 (\$110.20/sq. ft.)



For more information, please contact:

PAUL HOGE
(248) 948 0103
paulhoge@signatureassociates.com

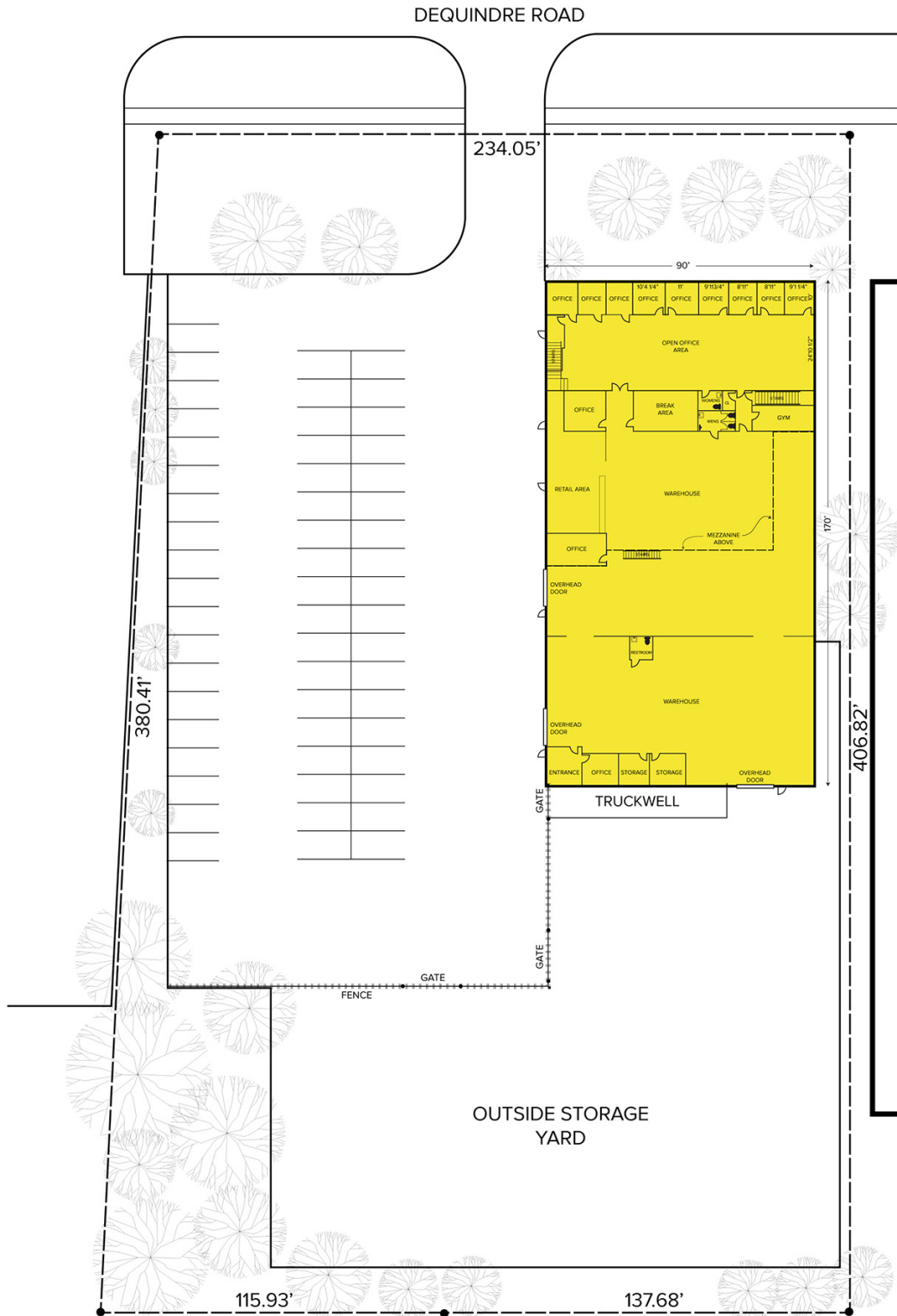
SIGNATURE ASSOCIATES
One Towne Square, Suite 1200
Southfield, MI 48076
www.signatureassociates.com

31691 Dequindre Road – Madison Heights, Michigan

Industrial For Sale

18,603
Square Feet
AVAILABLE

Site Plan



For more information, please contact:

PAUL HOGE
(248) 948 0103
paulhoge@signatureassociates.com

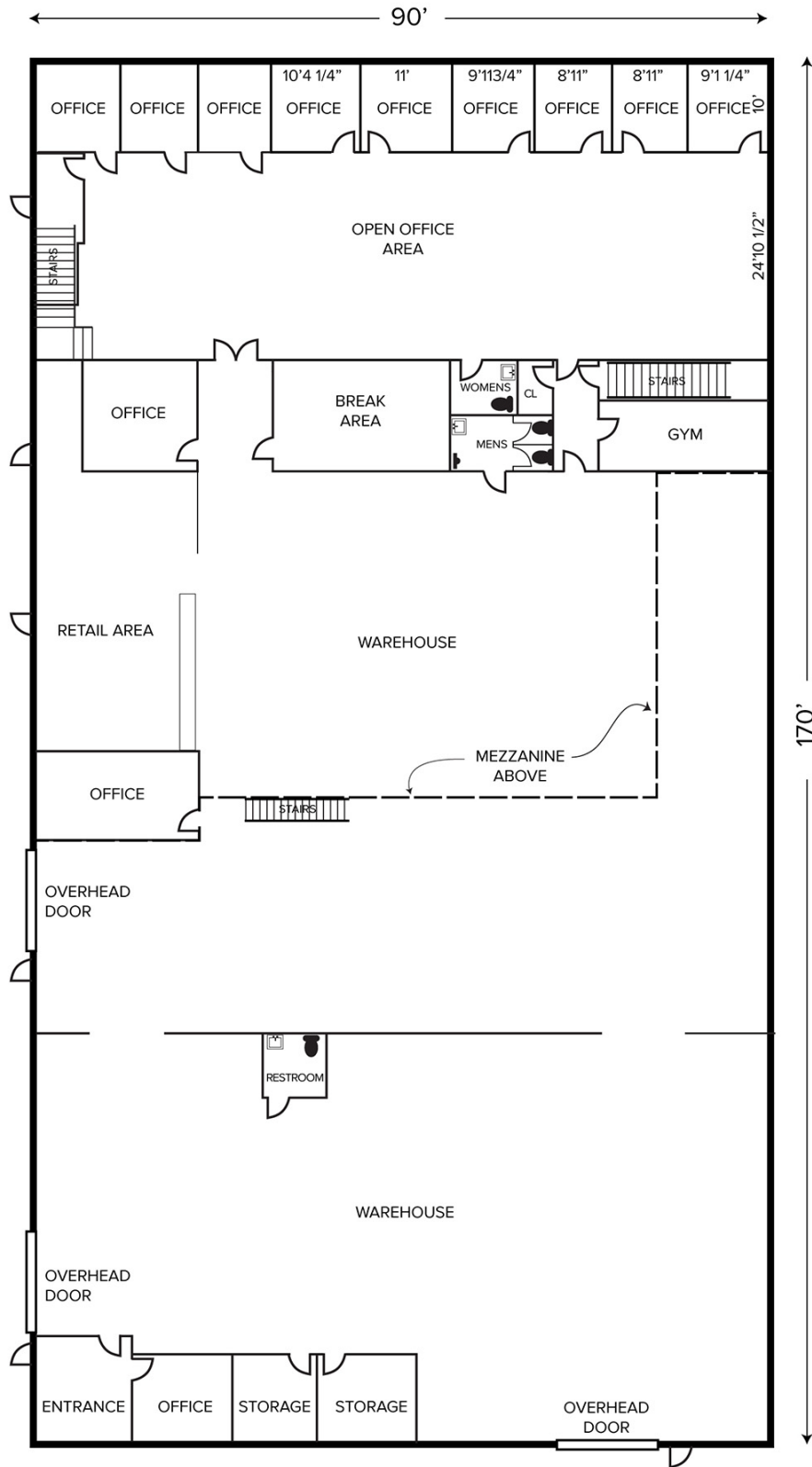
SIGNATURE ASSOCIATES
One Towne Square, Suite 1200
Southfield, MI 48076
www.signatureassociates.com

31691 Dequindre Road – Madison Heights, Michigan

Industrial For Sale

18,603
Square Feet
AVAILABLE

Floor Plan – 1st Floor



For more information, please contact:

PAUL HOGE
(248) 948 0103
paulhoge@signatureassociates.com

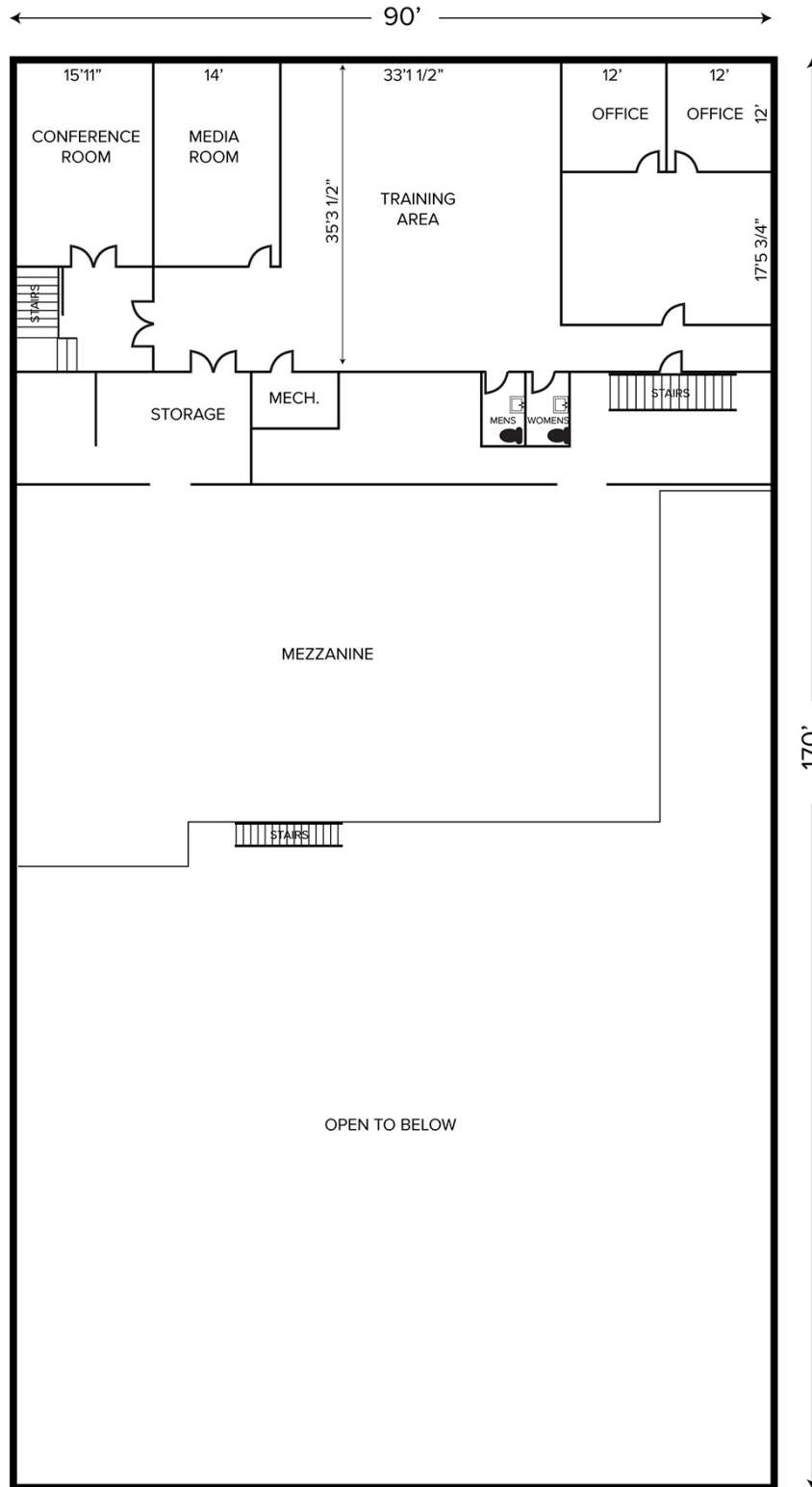
SIGNATURE ASSOCIATES
One Towne Square, Suite 1200
Southfield, MI 48076
www.signatureassociates.com

31691 Dequindre Road – Madison Heights, Michigan

Industrial For Sale

18,603
Square Feet
AVAILABLE

Floor Plan – 2nd Floor



For more information, please contact:

PAUL HOGE
(248) 948 0103
paulhoge@signatureassociates.com

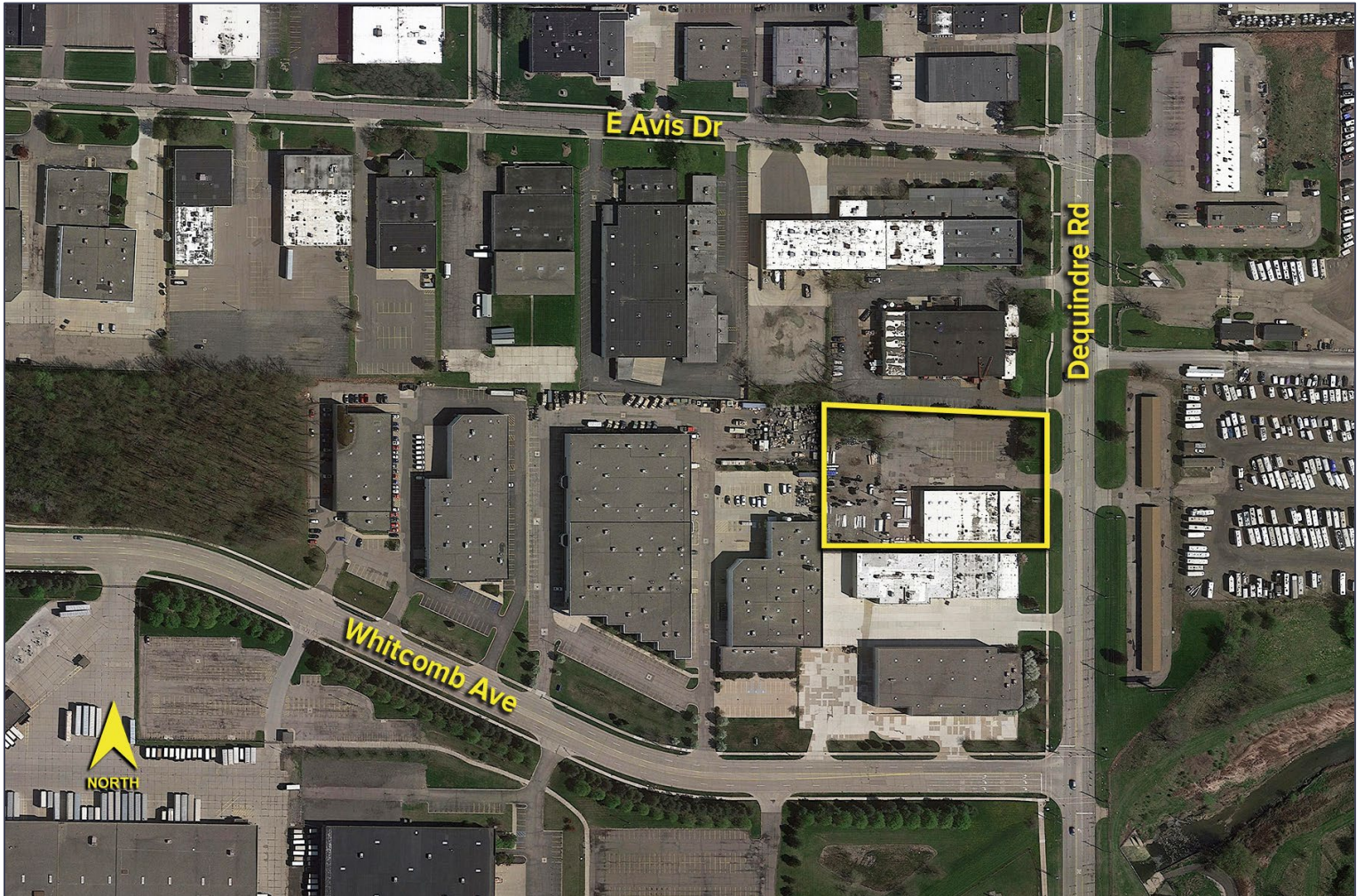
SIGNATURE ASSOCIATES
One Towne Square, Suite 1200
Southfield, MI 48076
www.signatureassociates.com

31691 Dequindre Road – Madison Heights, Michigan

Industrial For Sale

18,603
Square Feet
AVAILABLE

Aerial



For more information, please contact:

PAUL HOGE
(248) 948 0103
paulhoge@signatureassociates.com

SIGNATURE ASSOCIATES
One Towne Square, Suite 1200
Southfield, MI 48076
www.signatureassociates.com