

# Premier Beverly Hills Triangle Office For Sublease



## Nathan Pellow

Sr. Executive Vice President  
Lic. No. 01214721  
+1 213 532 3213  
nathan.pellow@colliers.com

## Michael Naumovitch

Associate Vice President  
Lic. No. 02018250  
+1 818 480 2006  
michael.naumovitch@colliers.com

## James Min

Vice Chairman  
Lic. No. 01426437  
+1 310 321 1837  
james.min@colliers.com

## Jennifer Min

Associate  
Lic. No. 02050523  
+1 310 279 5797  
jennifer.min@colliers.com

Colliers  
865 S. Figueroa St, Suite 3500  
Los Angeles, CA 90017  
P: +1 213 627 1214  
colliers.com

# 9350 Wilshire Blvd, Ste 400 Beverly Hills, CA 90212



Suite  
400



Asking Lease Rate  
\$6.50 /SF



Available SF  
5,301



Availability  
90 Days



Term Through  
May 2028



Furniture  
Negotiable

Copyright © 2025 Colliers International. Information herein has been obtained from sources deemed reliable, however its accuracy cannot be guaranteed. The user is required to conduct their own due diligence and verification.

# For Sublease

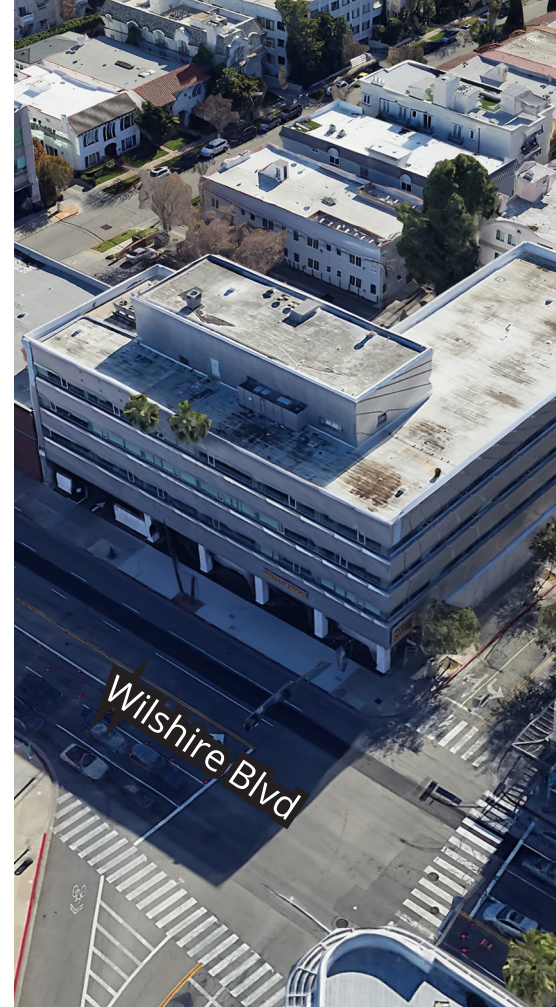
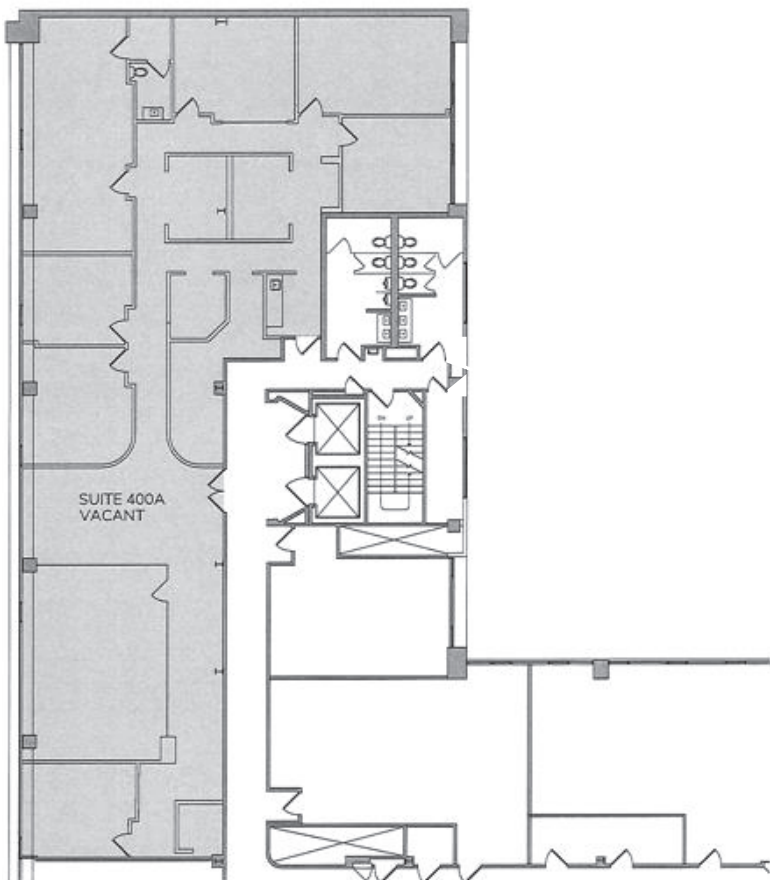
## Suite Highlights

- » Modern creative workspace with north facing views
- » Polished concrete floors and glass office fronts
- » Abundant natural light
- » Mixture of private offices and bullpen workspace
- » Double door elevator ID

## Building Highlights

- » Operable windows for fresh air
- » New lobby and common area renovations
- » Modernized restrooms
- » Onsite subterranean valet parking services
- » Exclusive car wash in parking garage
- » Building Signage Potential

## Floor Plan



### Contact us:

#### Nathan Pellow

Sr. Executive Vice President  
Lic. No. 01214721  
+1 213 532 3213  
nathan.pellow@colliers.com

#### Michael Naoumovitch

Associate Vice President  
Lic. No. 02018250  
+1 818 480 2006  
michael.naoumovitch@colliers.com

#### James Min

Vice Chairman  
Lic. No. 01426437  
+1 310 321 1837  
james.min@colliers.com

#### Jennifer Min

Associate  
Lic. No. 02050523  
+1 310 279 5797  
jennifer.min@colliers.com

---

Colliers  
865 S. Figueroa St, Suite 3500  
Los Angeles, CA 90017  
P: +1 213 627 1214  
colliers.com

# Interior Photos

Reception / Lounge



Kitchen / Break Room



Conference Room



Workstations



Entrance / Reception



Lounge Area



# Location



## RESTAURANTS

1. A.O.C.
2. Beverlitz Cafe
3. Blue Bottle Coffee
4. Cafe Angelino
5. California Pizza Kitchen
6. Chaumont Bakery & Café
7. Corks & Coffee
8. CUT
9. Fogo de Chão
10. Frida Mexican Cuisine
11. Funke
12. Gourmando
13. Il Cielo
14. Il Pastaio
15. Lawry's The Prime Rib
16. Lazy Daisy
17. Mastro's Steakhouse
18. Matsuhisa
19. Matu
20. Nate'n Al's Deli
21. Ocean Prime
22. Piccolo Paradiso
23. Sasabune
24. South Beverly Grill
25. Spago
26. Steak 48
27. Stella
28. SUGARFISH
29. The Grill on the Alley
30. The Ivy
31. Urth Caffé
32. Wally's

## SHOPPING

1. Beverly Center
2. Beverly Hills Farmers Market
3. Bristol Farms
4. Erewhon Beverly Hills
5. Melrose Avenue
6. Pavilions
7. Ralphs Fresh Fare
8. Robertson Boulevard
9. Rodeo Drive
10. The Grove
11. The Original Farmers Market
12. Trader Joe's
13. Two Rodeo
14. Westfield Century City
15. Whole Foods Market

## RECREATION

1. Beverly Hills Garden Park
2. Equinox Beverly Hills
3. Hillcrest Country Club
4. La Brea Tar Pits
5. La Cienega Park & Community Center
6. LA Fitness
7. LACMA
8. Los Angeles Country Club
9. Pacific Design Center
10. Rodeo Drive Walk of Style
11. Roxbury Park
12. Wallis Annenberg Center
13. West Hollywood Park

## HOTELS

1. Avalon Hotel
2. Beverly Hills Plaza Hotel & Spa
3. Beverly Wilshire
4. Four Seasons
5. SIXTY Beverly Hills
6. The Peninsula Beverly Hills
7. Waldorf Astoria Beverly Hills

## SCHOOLS

1. Beverly Hills High School
2. Beverly Vista Middle School
3. Canfield Avenue Elementary
4. Horace Mann School
5. UCLA

## MEDICAL

1. Cedars-Sinai Medical Center
2. Ronald Reagan UCLA Medical Center